

UNITED STATES
DEPARTMENT OF THE INTERIOR
GEOLOGICAL SURVEY

APPLICATION FOR PERMIT TO DRILL, DEEPEN, OR PLUG BACK

1a. TYPE OF WORK

DRILL ☒DEEPEN ☐PLUG BACK ☐

b. TYPE OF WELL

OIL
WELL ☒GAS
WELL ☐

OTHER

SINGLE
ZONE ☐MULTIPLE
ZONE ☐

2. NAME OF OPERATOR

Flag-Redfern Oil Company

3. ADDRESS OF OPERATOR

P. O. Box 23, Midland, Texas 79701

4. LOCATION OF WELL (Report location clearly and in accordance with any State requirements.*)

At surface 1980' FSL & 2180' FEL, Sec. 23, T-9-S, R-37-E

At proposed prod. zone Same

14. DISTANCE IN MILES AND DIRECTION FROM NEAREST TOWN OR POST OFFICE*

15 miles east of Crossroads, New Mexico

15. DISTANCE FROM PROPOSED*

LOCATION TO NEAREST
PROPERTY OR LEASE LINE, FT.
(Also to nearest drlg. unit line, if any)

460'

16. NO. OF ACRES IN LEASE

400

17. NO. OF ACRES ASSIGNED
TO THIS WELL

80

18. DISTANCE FROM PROPOSED LOCATION*
TO NEAREST WELL, DRILLING, COMPLETED,
OR APPLIED FOR, ON THIS LEASE, FT.

2299'

19. PROPOSED DEPTH

5100'

20. ROTARY OR CABLE TOOLS

Rotary

21. ELEVATIONS (Show whether DF, RT, GR, etc.)

3970' G.R.

22. APPROX. DATE WORK WILL START*

September 1, 1973

23.

PROPOSED CASING AND CEMENTING PROGRAM

SIZE OF HOLE	SIZE OF CASING	WEIGHT PER FOOT	SETTING DEPTH	QUANTITY OF CEMENT
12-1/4"	8-5/8"	24# J-55	400'	250 sx - Circulate
7-7/8"	4-1/2"	9.5# J-55	5100'	250 sx

Drill 12 1/4" hole from surface to approximately 400'. Run and set 8-5/8" casing, circulate cement to surface with 250 sx Class H, 2% CaCl₂. Drill 7-7/8" hole to approximately 5100'. Run open hole logs. Run 4 1/2", 9.5 lb/ft, J-55 production casing, cement with 250 sx Class C, 2% gel, 0.75% CFR-2, and 8 lbs salt/sack. Run correlation log, perforate San Andres. Treat with acid. Swab to test. Potential well.

Mud Program - 0-4800' native mud.

4800-TD salt base mud - Wt. 10.3#, Vis 38, WL 15 cc

Blowout Preventer - Shaffer 10" - Series 900 - Installed on surface casing.

IN ABOVE SPACE DESCRIBE PROPOSED PROGRAM: If proposal is to deepen or plug back, give data on present productive zone and proposed new productive zone. If proposal is to drill or deepen directionally, give pertinent data on subsurface locations and measured and true vertical depths. Give blowout preventer program, if any.

24.

SIGNED

Byron H. Drea

TITLE

Production Manager

DATE 8-3-73

(This space for Federal or State office use)

PERMIT NO.

APPROVAL DATE

APPROVED BY

TITLE

CONDITIONS OF APPROVAL, IF ANY:

APPROVED
AUG 15 1973
ARTHUR R. BROWN
DISTRICT MANAGER

*See Instructions On Reverse Side

WELL LOCATION AND ACREAGE DEDICATION PLAT

Supersedes C-123
Effective 1-1-55

All distances must be from the outer boundaries of the Section.

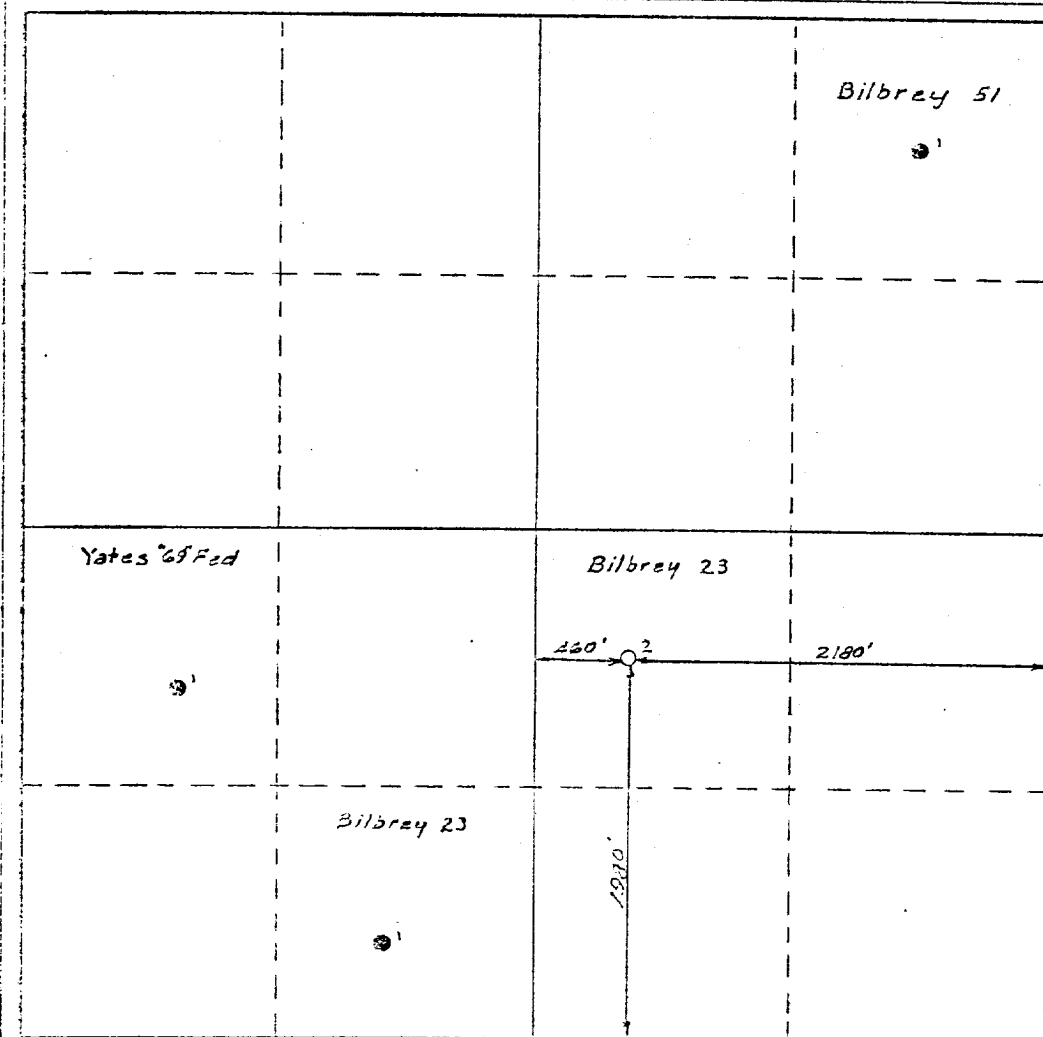
Operator Flag-Redfern Oil Company			Lease Bilbrey 23		Well No. 2
Unit Letter J	Section 23	Township 9-S	Range 37-E	County Lea	
Actual Footage Location of Well:					
1980 feet from the south line and		2180 feet from the east line			
Ground Level Elev. 3970	Producing Formation San Andres		Pool Sawyer (West)	Dedicated Acreage: 80 Acres	

1. Outline the acreage dedicated to the subject well by colored pencil or hatchure marks on the plat below.
2. If more than one lease is dedicated to the well, outline each and identify the ownership thereof (both as to working interest and royalty).
3. If more than one lease of different ownership is dedicated to the well, have the interests of all owners been consolidated by communitization, unitization, force-pooling, etc?

☐ Yes ☐ No If answer is "yes," type of consolidation _____

If answer is "no," list the owners and tract descriptions which have actually been consolidated. (Use reverse side of this form if necessary.) _____

No allowable will be assigned to the well until all interests have been consolidated (by communitization, unitization, forced-pooling, or otherwise) or until a non-standard unit, eliminating such interests, has been approved by the Commission.



CERTIFICATION

I hereby certify that the information contained herein is true and complete to the best of my knowledge and belief.

Name

Position

Production Manager

Company

Flag-Redfern Oil Company

Date

August 3, 1973

I hereby certify that the well location shown on this plat was plotted from field notes of actual surveys made by me or under my supervision, and that the same is true and correct to the best of my knowledge and belief.

Date Surveyed

7-28-73

Registered Professional Engineer
and/or Land Surveyor

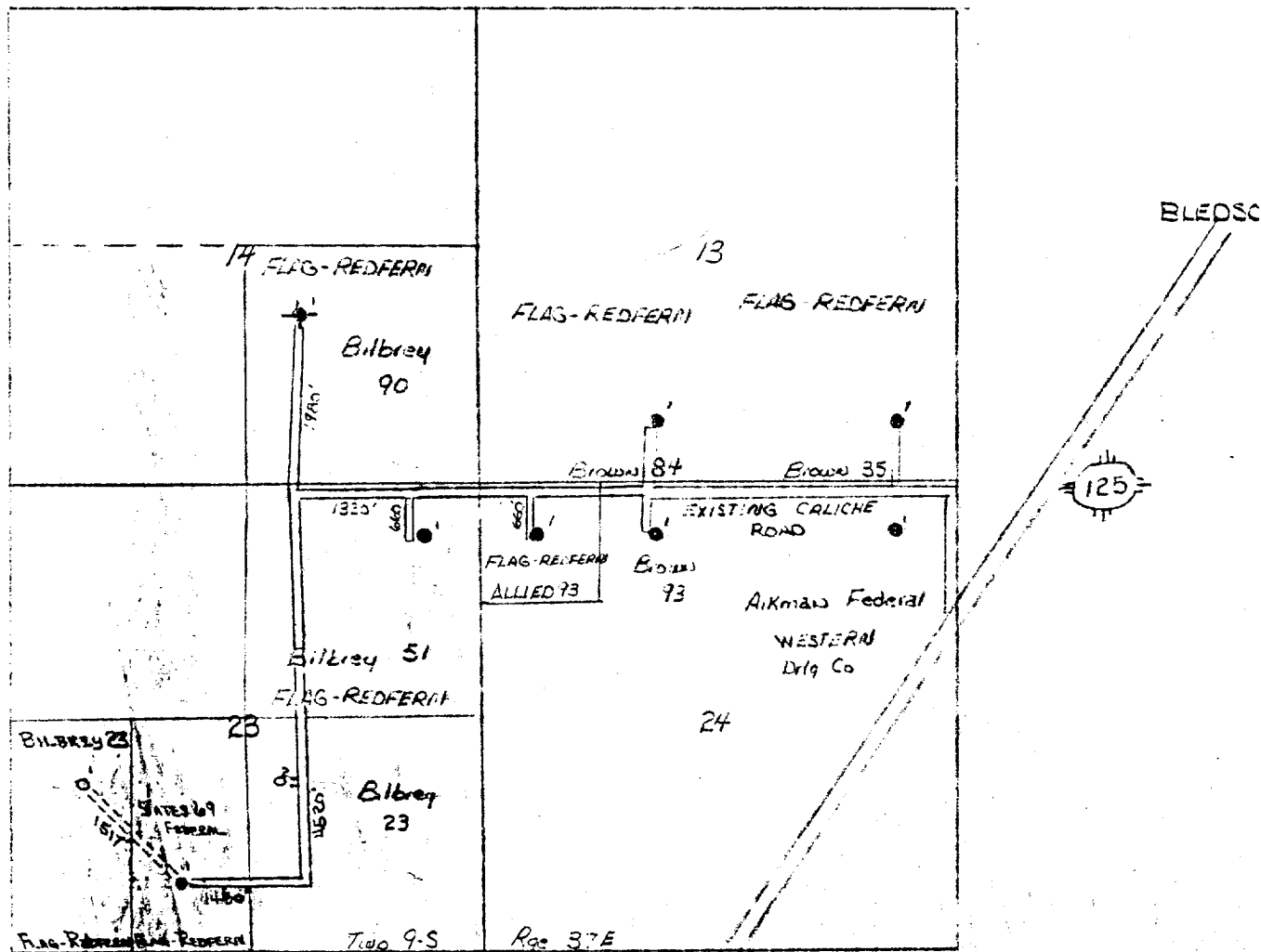
Certificate No.

754

DEVELOPMENT PLAN FOR

SURFACE USE

FLAG - REDFERN OIL COMPANY
SAUTER SAN ANDRES FIELD
LEA COUNTY, NEW MEXICO



PAD DETAIL

TATUM

