

NO. OF COPIES RECEIVED	
DISTRIBUTION	
SANTA FE	
FILE	
U.S.G.S.	
LAND OFFICE	
OPERATOR	

NEW MEXICO OIL CONSERVATION COMMISSION

Form C-101

Revised 1-1-65

3 125,300

5A. Indicate Type of Lease
STATE <input checked="" type="checkbox"/> FEE <input type="checkbox"/>
5. State Oil & Gas Lease No.
L-334 & LG-623

APPLICATION FOR PERMIT TO DRILL, DEEPEN, OR PLUG BACK

1a. Type of Work		7. Unit Agreement Name	
b. Type of Well		8. Farm or Lease Name	
DRILL <input checked="" type="checkbox"/> DEEPEN <input type="checkbox"/> PLUG BACK <input type="checkbox"/>		State-Gom. "32" <i>Cam</i>	
c. Name of Operator		9. Well No.	
Flag-Redfern Oil Company		1	
3. Address of Operator		10. Field and Pool, or Wildcat	
P. O. Box 23, Midland, Texas 79701		Sawyer <i>and 11/1/1</i>	
1. Location of Well		12. County	
UNIT LETTER <u>B</u> LOCATED <u>660</u> FEET FROM THE <u>North</u> LINE		Lea	
AND <u>1980</u> FEET FROM THE <u>East</u> LINE OF SEC. <u>32</u> TWP. <u>9-S</u> RGE. <u>38-E</u> NMPM			
19. Proposed Depth		19A. Formation	
5100'		San Andres	
20. Rotary or C.T.		Rotary	
21. Elevations (Show whether Dr, RT, etc.)		22. Approx. Date Work will start	
21A. Kind & Status Plug. Bond		November 16, 1973	
Blanket			
21B. Drilling Contractor			
Sitton & Norton			

PROPOSED CASING AND CEMENT PROGRAM

SIZE OF HOLE	SIZE OF CASING	WEIGHT PER FOOT	SETTING DEPTH	SACKS OF CEMENT	EST. TOP
12-1/4"	8-5/8"	24# J-55	375'	250 sx.	Circulate
7-7/8"	4-1/2"	9.5# J-55	5100'	250 sx.	3000'

Drill 12 1/4" hole from surface to approximately 375'. Run and set 8-5/8" casing, circulate cement to surface with 250 sx. Class "H", 2% CaCl. Drill 7-7/8" hole to approximately 5100'. Run open hole logs. Run 4 1/2", 9.5#/ft., J-55 casing. Cement with 250 sx Class "C", 2% gel, 0.75% CFR-2, 8 lbs salt per sack. Run correlation log, perforate San Andres. Treat with acid. Swab to test. Potential well.

Mud Program: 0- 400' Native mud
400-4900' Native mud & oil
4900- T.D. Starch, Oil Emulsion

APPROVAL VALID
FOR 90 DAYS UNLESS
DRILLING COMMENCED,

EXPIRES 2-18-74

Blowout Preventor: Shaffer 10" - Series 900 - Installed on surface pipe.

IN ABOVE SPACE DESCRIBE PROPOSED PROGRAM: IF PROPOSAL IS TO DEEPEN OR PLUG BACK, GIVE DATA ON PRESENT PRODUCTIVE ZONE AND PROPOSED NEW PRODUCTIVE ZONE. GIVE BLOWOUT PREVENTER PROGRAM, IF ANY.

I hereby certify that the information above is true and complete to the best of my knowledge and belief.

Signed John A. Wendig Title Petroleum Engineer Date November 16, 1973

(This space for State Use)

APPROVED BY Leslie A. Clement TITLE _____ DATE _____

CONDITIONS OF APPROVAL, IF ANY:

NEW MEXICO OIL CONSERVATION COMMISSION
WELL LOCATION AND ACREAGE DEDICATION PLAT

Form C-102
Supersedes C-128
Effective 1-1-65

All distances must be from the outer boundaries of the Section.

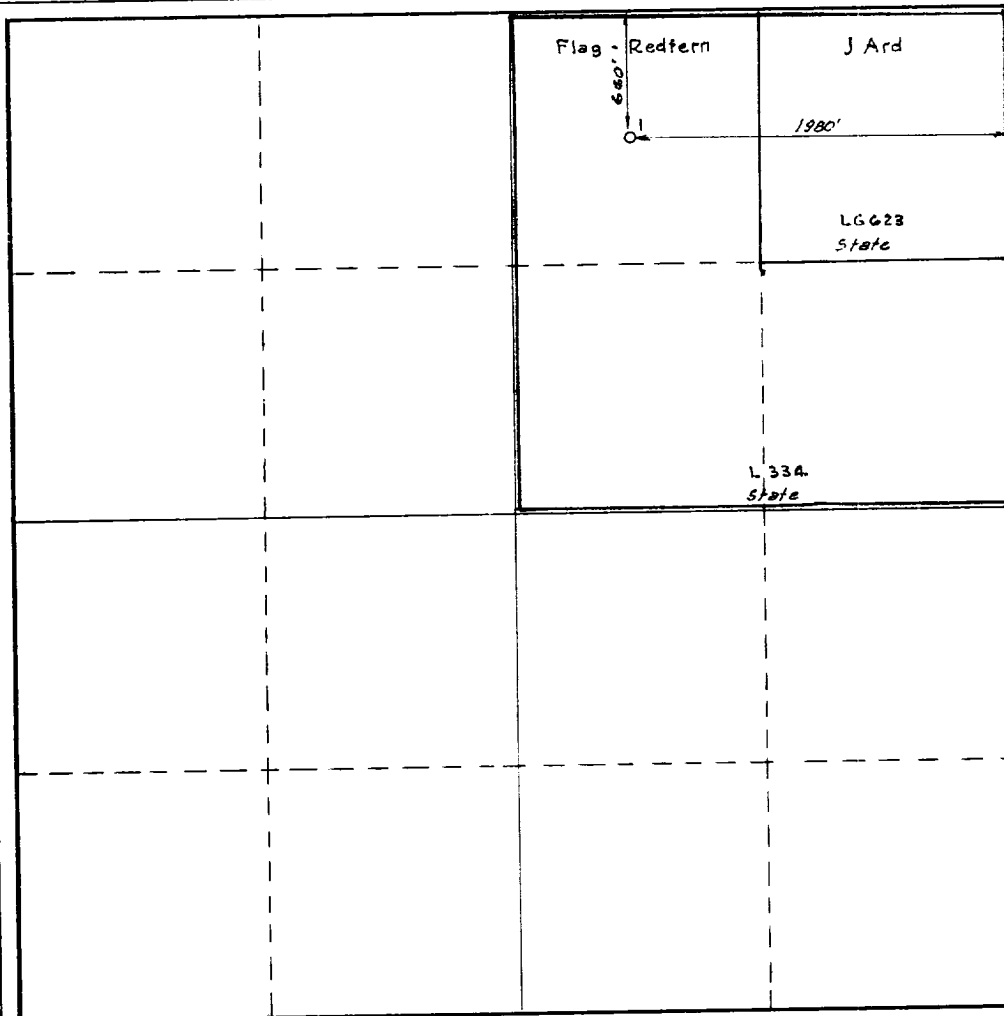
Operator Flag-Redfern Oil Company			Lease State-Gen. "32"		Well No. 1
Unit Letter B	Section 32	Township 9-S	Range 38-E	County Lea	
Actual Footage Location of Well: 660 feet from the North line and 1980 feet from the East line					
Ground Level Elev.	Producing Formation San Andres		Pool Sawyer	Dedicated Acreage: 160 Acres	

1. Outline the acreage dedicated to the subject well by colored pencil or hachure marks on the plat below.
2. If more than one lease is dedicated to the well, outline each and identify the ownership thereof (both as to working interest and royalty).
3. If more than one lease of different ownership is dedicated to the well, have the interests of all owners been consolidated by communitization, unitization, force-pooling, etc?

☒ Yes ☐ No If answer is "yes," type of consolidation Communitization

If answer is "no," list the owners and tract descriptions which have actually been consolidated. (Use reverse side of this form if necessary.)

No allowable will be assigned to the well until all interests have been consolidated (by communitization, unitization, forced-pooling, or otherwise) or until a non-standard unit, eliminating such interests, has been approved by the Commission.



CERTIFICATION

I hereby certify that the information contained herein is true and complete to the best of my knowledge and belief.

Name John H. Kennedy
Position Petroleum Engineer
Company Flag-Redfern Oil Company
Date November 16, 1973

I hereby certify that the well location shown on this plat was plotted from field notes of actual surveys made by me or under my supervision, and that the same is true and correct to the best of my knowledge and belief.

Date Surveyed
November 14, 1973

Registered Professional Engineer and/or Land Surveyor

Certificate No.

754

0 330 660 990 1320 1650 1980 2310 2640 2970 3300 3630 3960 4290 4620 4950 5280 5610 5940 6270 6600