

UNITED STATES
DEPARTMENT OF THE INTERIOR
GEOLOGICAL SURVEY

APPLICATION FOR PERMIT TO DRILL, DEEPEN, OR PLUG BACK

1a. TYPE OF WORK

DRILL ☒DEEPEN ☐PLUG BACK ☐

b. TYPE OF WELL

OIL
WELL ☒GAS
WELL ☐

OTHER

SINGLE
ZONE ☒MULTIPLE
ZONE ☐

2. NAME OF OPERATOR

John L. Cox

3. ADDRESS OF OPERATOR

408 West Wall, Midland, Texas 79701

4. LOCATION OF WELL (Report location clearly and in accordance with any State requirements.)*

At surface

519' FNL, 801' FEL

At proposed prod. zone

14. DISTANCE IN MILES AND DIRECTION FROM NEAREST TOWN OR POST OFFICE*

9 Miles East, Crossroads, New Mexico

15. DISTANCE FROM PROPOSED*

LOCATION TO NEAREST

PROPERTY OR LEASE LINE, FT.

(Also to nearest drlg. unit line, if any)

519'

16. NO. OF ACRES IN LEASE

160

17. NO. OF ACRES ASSIGNED
TO THIS WELL

80

18. DISTANCE FROM PROPOSED LOCATION*

TO NEAREST WELL, DRILLING, COMPLETED,
OR APPLIED FOR, ON THIS LEASE, FT.

1179'

19. PROPOSED DEPTH

5100'

20. ROTARY OR CABLE TOOLS

Rotary

21. ELEVATIONS (Show whether DF, RT, GR, etc.)

3963.4 GR

22. APPROX. DATE WORK WILL START*

1-1-74

23.

PROPOSED CASING AND CEMENTING PROGRAM

SIZE OF HOLE	SIZE OF CASING	WEIGHT PER FOOT	SETTING DEPTH	QUANTITY OF CEMENT
12 1/4"	8 5/8"	20#	400'	375 sx. Circulated
7 7/8"	4 1/2"	9.5#	5100'	350 sx.

8 5/8" casing to be cemented with 375 sx. Class H cement with 2% Calcium Chloride. This is ample cement to circulate to surface.

4 1/2" casing to be cemented with 350 sx. of Class C cement, 50-50 pozmix with 2% gel, 8# salt/sack and 0.75% CFR2 preceded by 500 gallon mud flush.

Mud Program: Water, Gel, and Lime 0-400'
Native Redbed mud 400-4700'
Low-solids salt gel-starch mud 4700'-TD

This is second well on acreage dedicated to well #2

IN ABOVE SPACE DESCRIBE PROPOSED PROGRAM: If proposal is to deepen or plug back, give data on present productive zone and proposed new productive zone. If proposal is to drill or deepen directionally, give pertinent data on subsurface locations and measured and true vertical depths. Give blowout preventer program, if any.

24.

SIGNED

Martha Wittenbach

TITLE

Production Clerk

DATE

12-3-73

(This space for Federal or State office use)

PERMIT NO.

APPROVAL DATE

APPROVED BY

TITLE

DATE

CONDITIONS OF APPROVAL, IF ANY:

*See Instructions On Reverse Side

APPROVED
DEC 12 1973
ARTHUR R. BROWN
DISTRICT ENGINEER

NEW MEXICO OIL CONSERVATION COMMISSION
WELL LOCATION AND ACREAGE DEDICATION PLAT

Form C-102
Supersedes C-128
Effective 1-1-65

All distances must be from the outer boundaries of the Section.

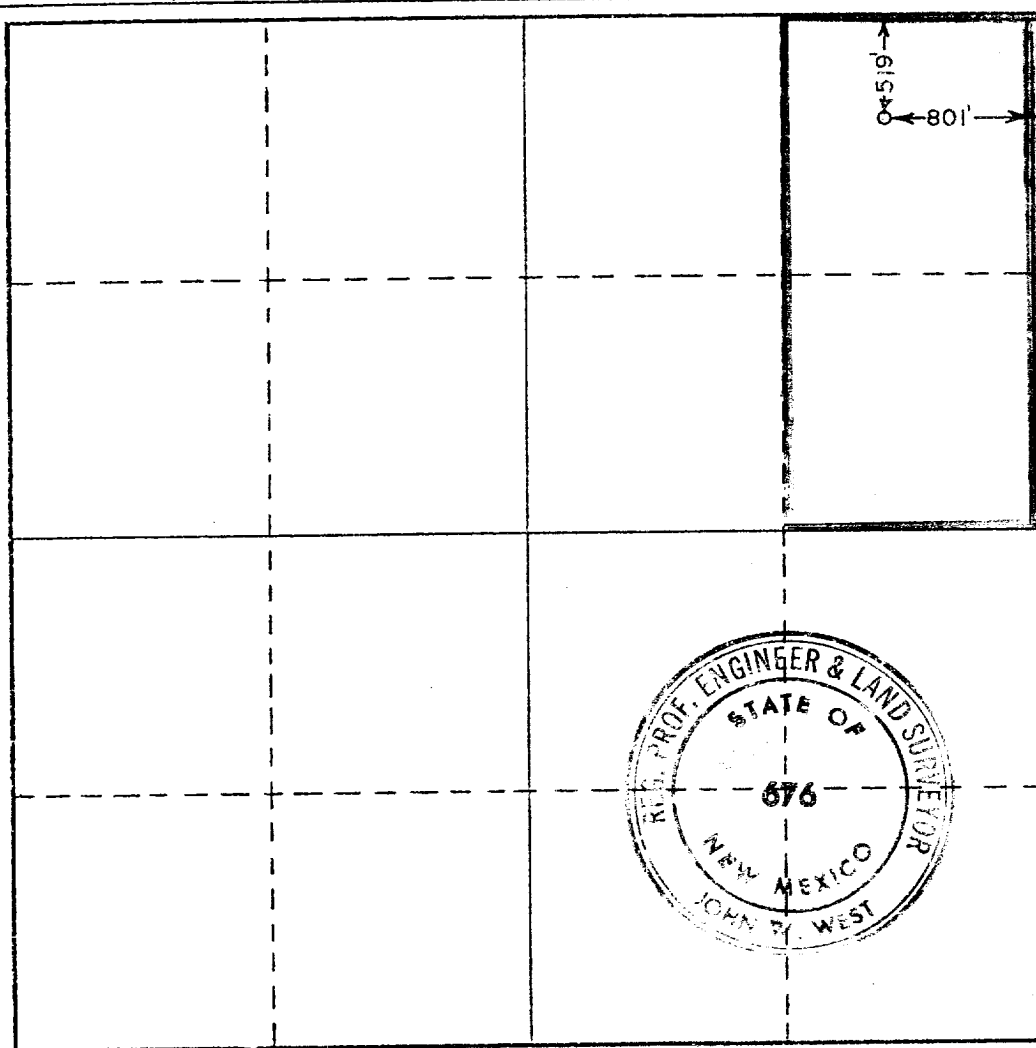
Operator JOHN L. COX		Lease U.S.M.		Well No. 3
Unit Letter A	Section 27	Township 9 SOUTH	Range 37 EAST	County LEA
Actual Footage Location of Well: 519 feet from the NORTH line and 801 feet from the EAST line				
Ground Level Elev. 3963.4	Producing Formation San Andres	Pool West Lawyer, San Andres	Dedicated Acreage: 80 Acres	

1. Outline the acreage dedicated to the subject well by colored pencil or hatchure marks on the plat below.
2. If more than one lease is dedicated to the well, outline each and identify the ownership thereof (both as to working interest and royalty).
3. If more than one lease of different ownership is dedicated to the well, have the interests of all owners been consolidated by communitization, unitization, force-pooling, etc?

☐ Yes ☐ No If answer is "yes," type of consolidation _____

If answer is "no," list the owners and tract descriptions which have actually been consolidated. (Use reverse side of this form if necessary.) _____

No allowable will be assigned to the well until all interests have been consolidated (by communitization, unitization, forced-pooling, or otherwise) or until a non-standard unit, eliminating such interests, has been approved by the Commission.



CERTIFICATION

I hereby certify that the information contained herein is true and complete to the best of my knowledge and belief.

Martha Wittenbach
Name

MARTHA WITTENBACH

Position
PRODUCTION CLERK

Company
JOHN L. COX

Date
DECEMBER 3, 1973

I hereby certify that the well location shown on this plat was plotted from field notes of actual surveys made by me or under my supervision, and that the same is true and correct to the best of my knowledge and belief.

Date Surveyed
OCTOBER 20, 1973

Registered Professional Engineer and/or Land Surveyor

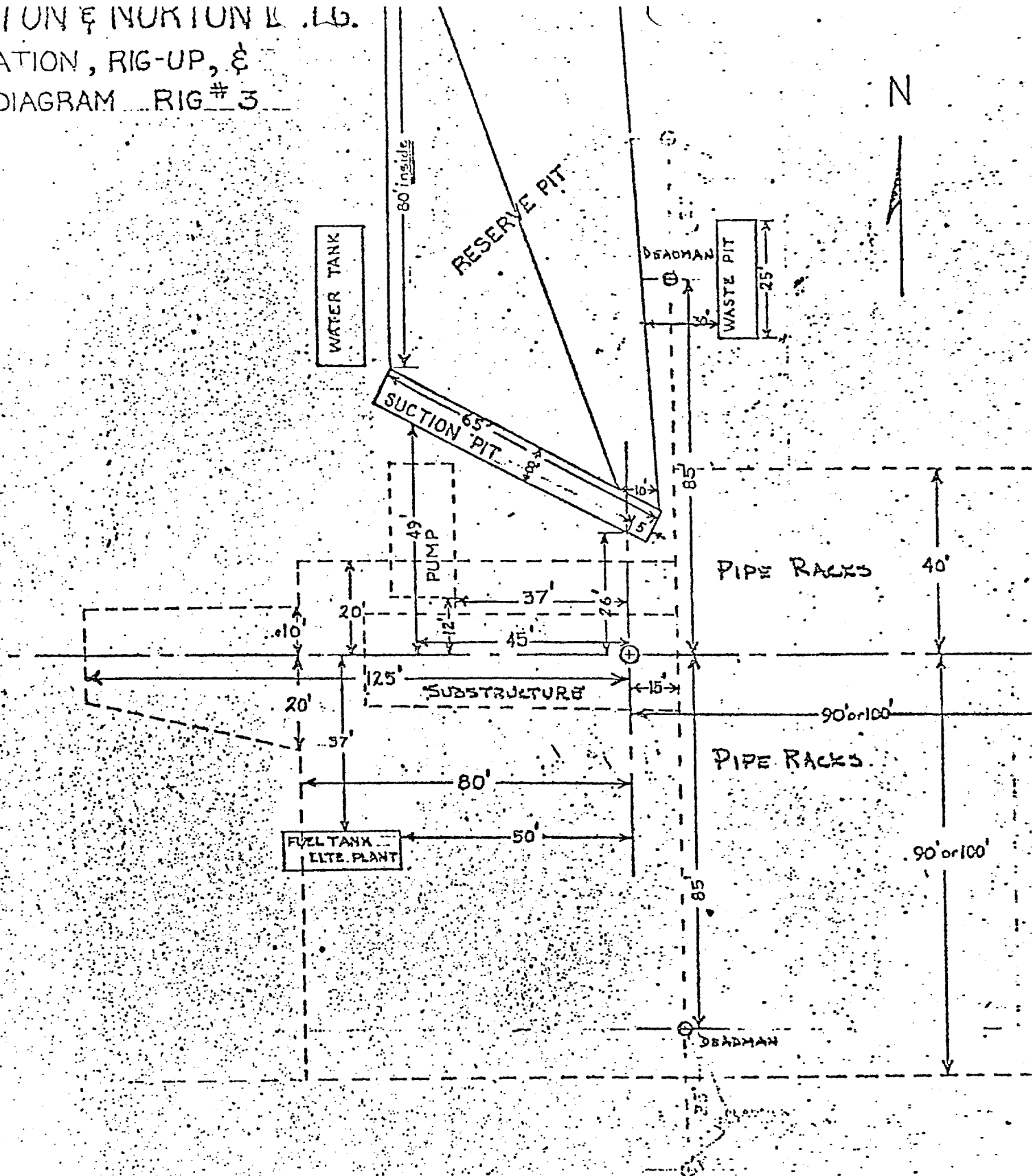
John P. West
Certificate No.

676

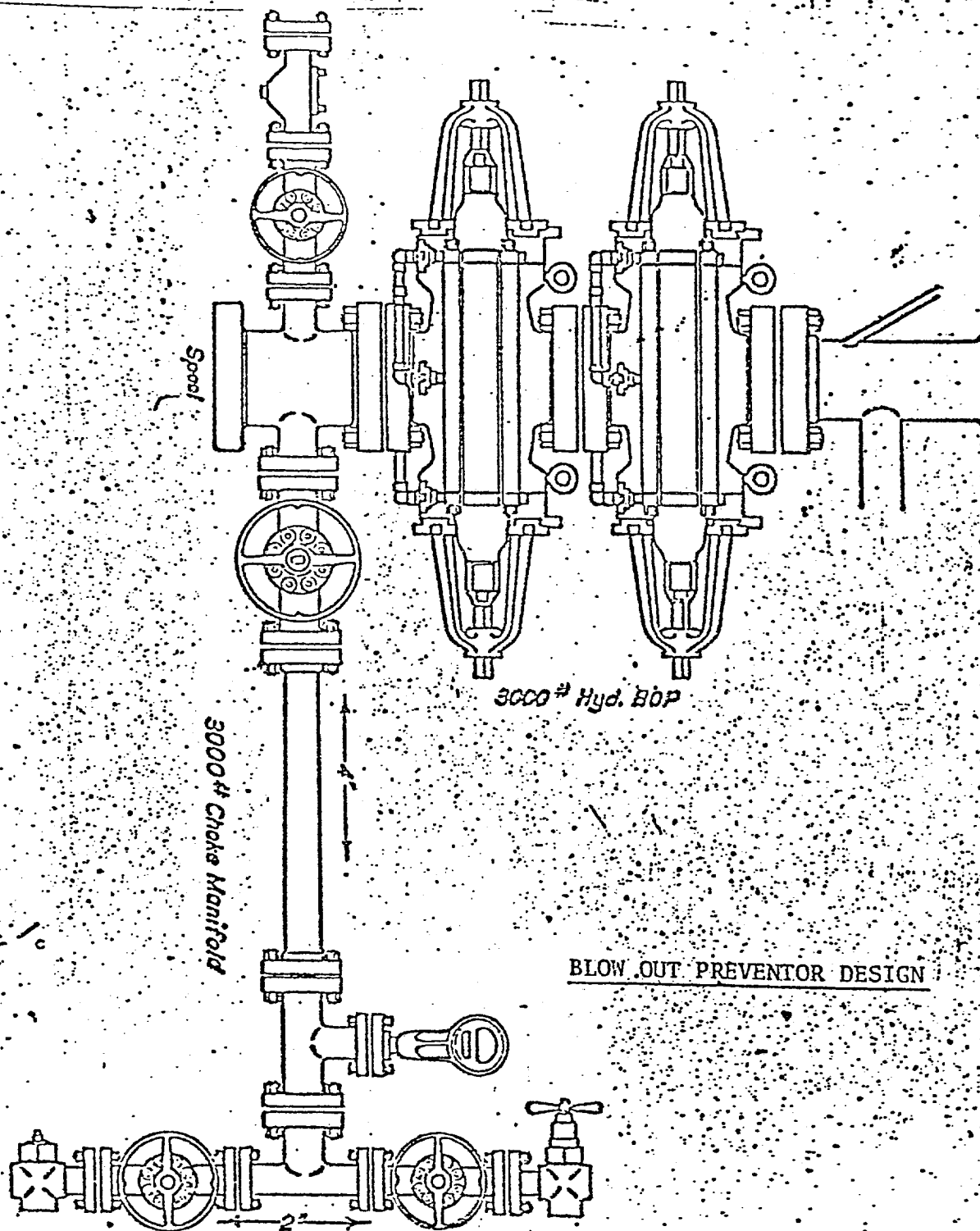
SITUATION & LOCATION L.L.G.

LOCATION, RIG-UP, &

PIT DIAGRAM RIG #3



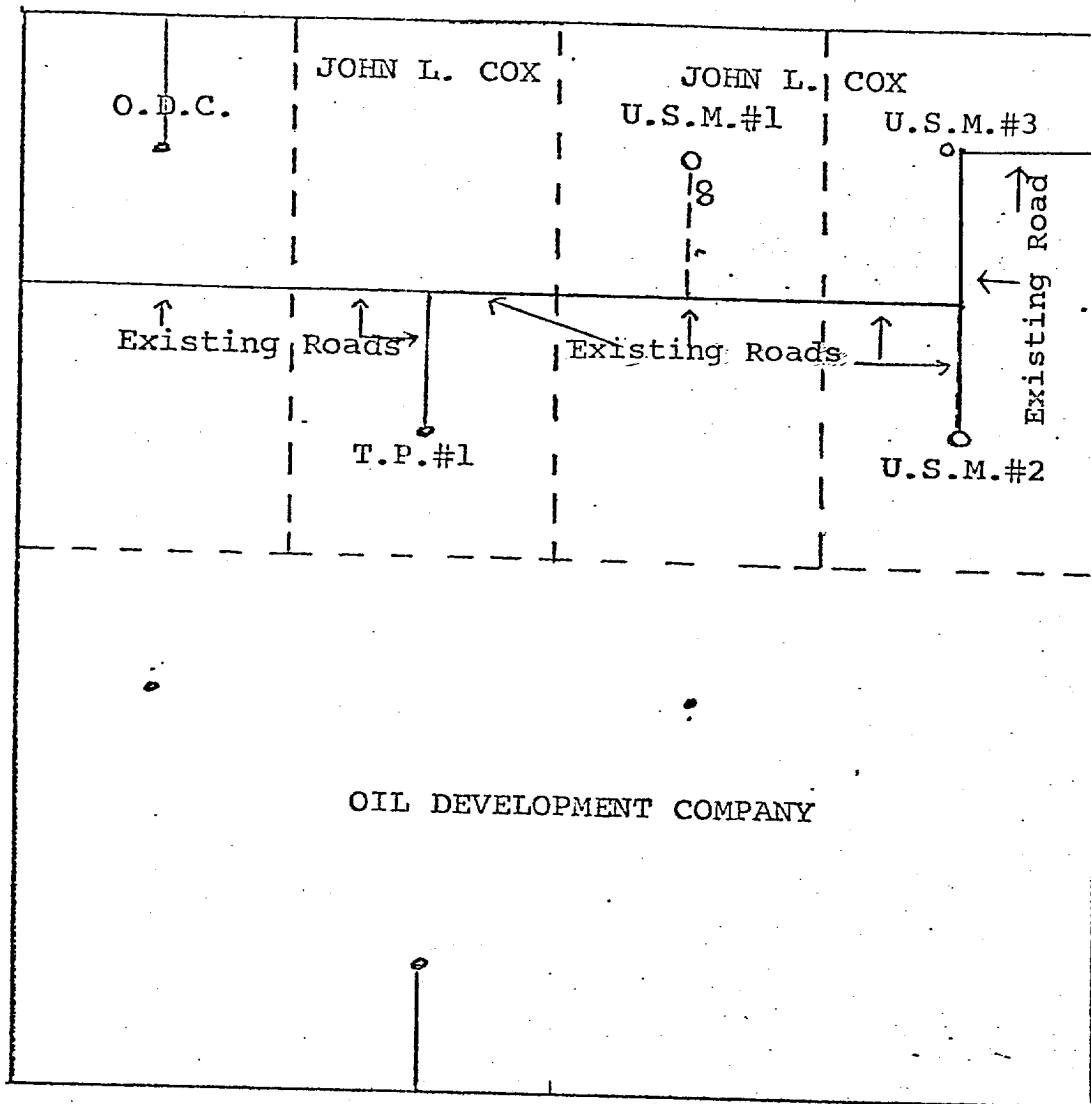
JOHN L. COX - U. S. M. #3
Section 27, T-9-S, R-37-E
Lea County, New Mexico



BLOW OUT PREVENTOR DESIGN

JOHN L. COX - U. S. M. #3
 Section 27, T-9-S, R-37-E
 Lea County, New Mexico

JOHN L. COX
 PLAN FOR SURFACE DEVELOPMENT FOR LEASES
 SECTION 27, T-9-S, R-37-E, LEA COUNTY, NEW MEXICO



OO Proposed tank battery
 Flow lines to be laid along
 roads.
 All roads to be 12' wide.

John L. Cox - U. S. M. #3
 Section 27, T-9-S, R-37E
 Lea County, New Mexico