

PETROLEUM INFORMATION

© Copyrighted Reproduction Prohibited

| | | | | | |
|--------|------------------------------|-------|-----------------|-----------|--------------|
| COUNTY | LEA | FIELD | Elving M | STATE | NM |
| OPR | COASTAL STATES GAS PROD. CO. | | | API | 30-025-24694 |
| NO | 3 | LEASE | McCuffin | SERIAL | |
| | Sec 29, T-9-S. R-33-E | | | MAP | |
| | 660' FNL, 1980' FWL of Sec | | | CO-ORD | |
| SPD | 5-15-74 | CMP | 5-27-74 | CLASS | DO |
| CSG | | | FORMATION | DATUM | ELEV |
| | | | FORMATION | DATUM | L & S |
| | 8 5/8" at 377' w/300 sx | | | | |
| | 4 1/2" at 4449' w/250 sx | | | | |
| | | | | | |
| | | | | | |
| | | | | | |
| | | | TD 4449' (SADR) | PBD 4445' | |

IP (San Andres) Perfs 4354-4422' Ppd 226 BOPD + 58 BW.
Pot based on 24 hr test. GOR (NR); Grav 19.8

| | | | | | | | |
|-------|--------|-----------|----------|----|-------|------|----|
| CONTR | Cactus | OPRS ELEV | 4355' GL | PD | 4600' | TYPE | RT |
|-------|--------|-----------|----------|----|-------|------|----|

F.R. 3-11-74
(San Andres)
5-15-74 ID 377'; Drig out omt
5-22-74 ID 4397'; Prep Drill
Cored 4337-96', rec 60', No descr
5-29-74 ID 4449'; PBD 4445'; Ystg
Cored 4397-4445', rec 45', No descr
Perf 4354-4422' w/61 shots (overall)
Swbd 15-16 BF per/hr (75% oil) (4354-4422')
6-5-74 ID 4449'; PBD 4445'; WO Pot
Ppd 149 BO + 50 BW in 24 hrs (4354-4422')
6-12-74 ID 4449'; PBD 4445'; WO Pot
6-17-74 ID 4449'; PBD 4445'; COMPLETE
LOG TOPS: Yates 2400', San Andres 3619',
Slaughter 4352'
6-22-74 COMPLETION REPORTED

**NEW MEXICO OIL CONSERVATION COMMISSION
WELL LOCATION AND ACREAGE DEDICATION PLAT**

Form C-102
Supersedes C-128
Effective 1-1-65

All distances must be from the outer boundaries of the Section.

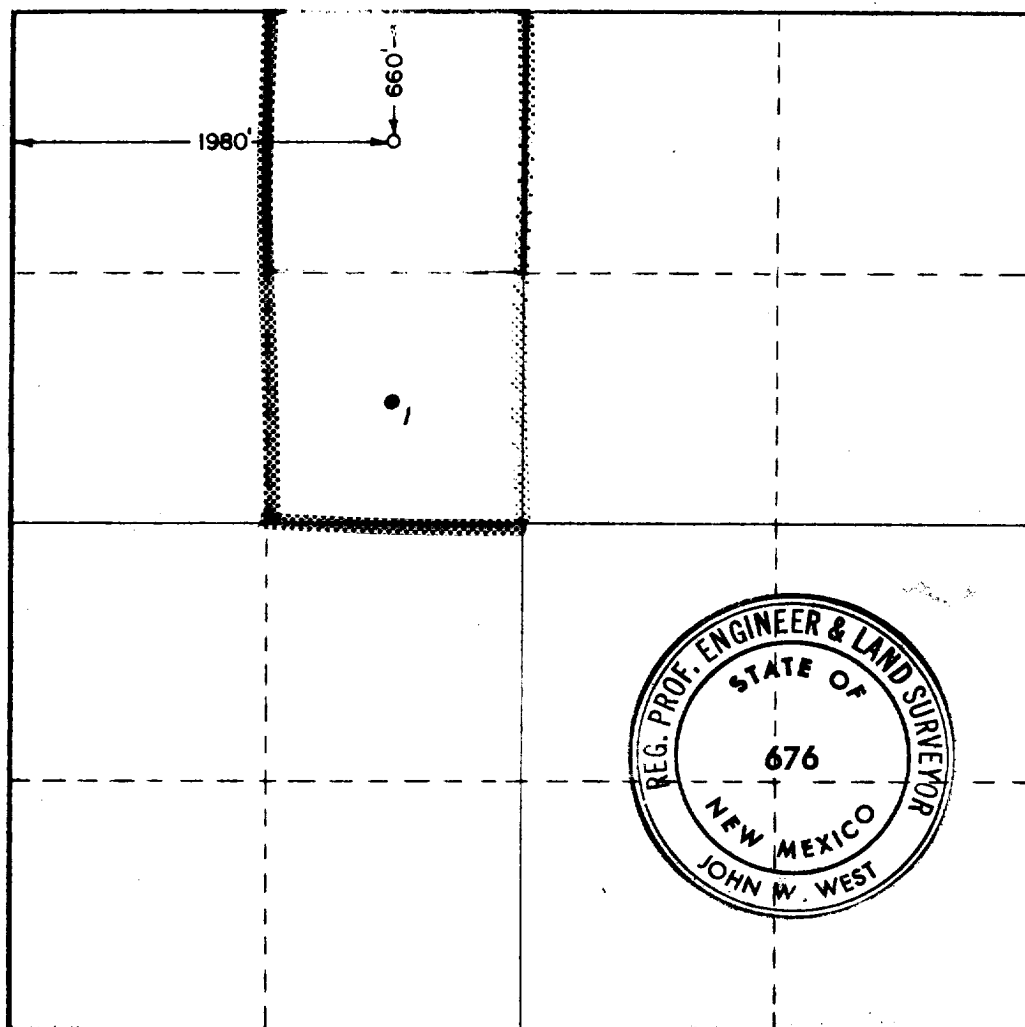
| | | | | | |
|---|--|----------------------------|--------------------------------------|----------------------|---------------------------------------|
| Operator COASTAL STATES GAS PRODUCING CO. | | | Lease McGUFFIN | | Well No. 3 |
| Unit Letter C | Section 29 | Township 9 SOUTH | Range 33 EAST | County LEA | |
| Actual Footage Location of Well: 1980 feet from the WEST line and 660 feet from the NORTH line | | | | | |
| Ground Level Elev. 4355.6 | Producing Formation SAN ANDRES | | Pool FLYING "M" SAN ANDRES | | Dedicated Acreage: 80 Acres |

1. Outline the acreage dedicated to the subject well by colored pencil or hatchure marks on the plat below.
2. If more than one lease is dedicated to the well, outline each and identify the ownership thereof (both as to working interest and royalty).
3. If more than one lease of different ownership is dedicated to the well, have the interests of all owners been consolidated by communitization, unitization, force-pooling, etc?

☐ Yes ☐ No If answer is "yes," type of consolidation _____

If answer is "no," list the owners and tract descriptions which have actually been consolidated. (Use reverse side of this form if necessary.) _____

No allowable will be assigned to the well until all interests have been consolidated (by communitization, unitization, forced-pooling, or otherwise) or until a non-standard unit, eliminating such interests, has been approved by the Commission.



CERTIFICATION

I hereby certify that the information contained herein is true and complete to the best of my knowledge and belief.

James B. Shepherd, Jr.

Name
James B. Shepherd, Jr.

Position
District Production Manager

Company
Coastal States Gas Prod. Co.

Date
March 6, 1974

I hereby certify that the well location shown on this plat was plotted from field notes of actual surveys made by me or under my supervision, and that the same is true and correct to the best of my knowledge and belief.

Date Surveyed
FEBRUARY 27-28, 1974

Registered Professional Engineer and/or Land Surveyor

John W. West

Certificate No. **676**



NEW MEXICO OIL CONSERVATION COMMISSION
WELL LOCATION AND ACREAGE DEDICATION PLAT

Form C-102
Supersedes C-128
Effective 1-1-65

All distances must be from the outer boundaries of the Section.

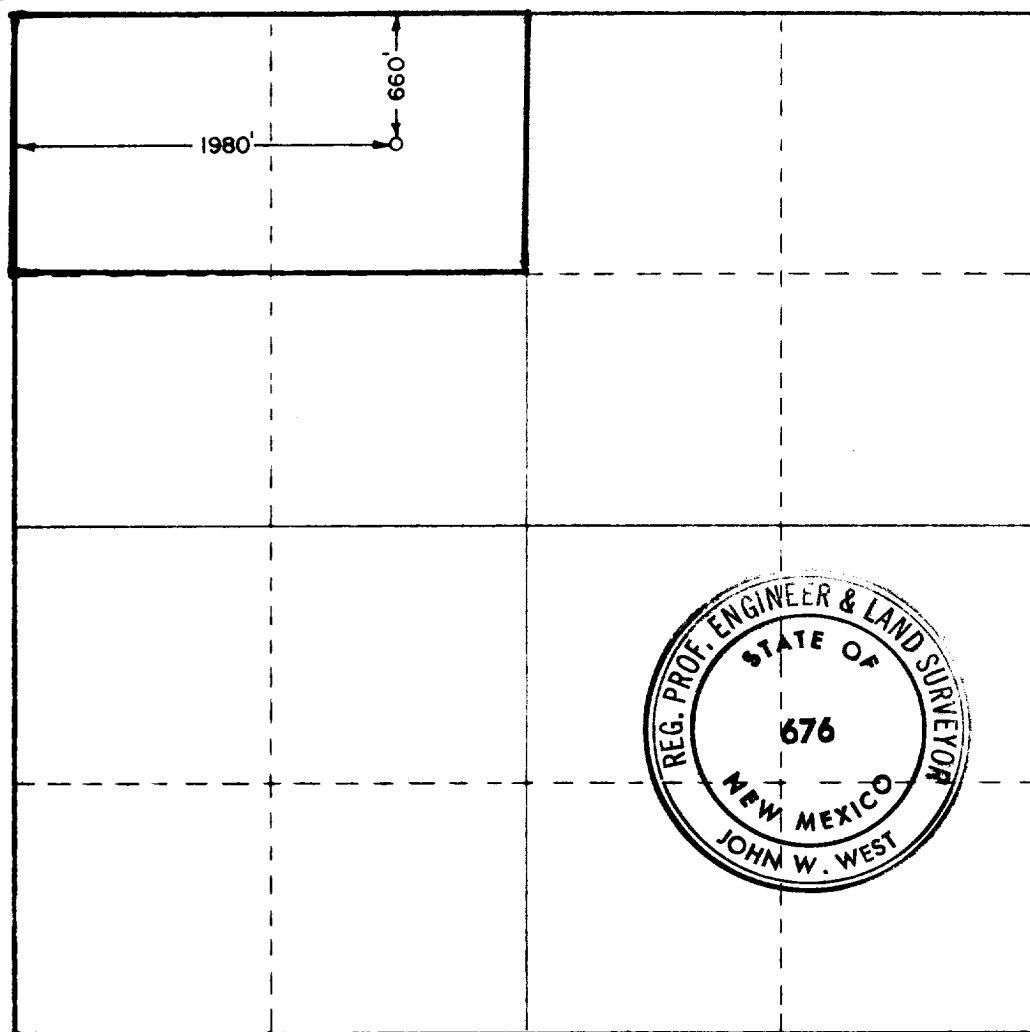
| | | | | | |
|---|--|----------------------------|--------------------------------------|----------------------|---------------------------------------|
| Operator COASTAL STATES GAS PRODUCING CO. | | | Lease McGUFFIN | | Well No. 3 |
| Unit Letter C | Section 29 | Township 9 SOUTH | Range 33 EAST | County LEA | |
| Actual Footage Location of Well: 1980 feet from the WEST line and 660 feet from the NORTH line | | | | | |
| Ground Level Elev. 4355.6 | Producing Formation SAN ANDRES | | Pool FLYING "M" SAN ANDRES | | Dedicated Acreage: 80 Acres |

1. Outline the acreage dedicated to the subject well by colored pencil or hatchure marks on the plat below.
2. If more than one lease is dedicated to the well, outline each and identify the ownership thereof (both as to working interest and royalty).
3. If more than one lease of different ownership is dedicated to the well, have the interests of all owners been consolidated by communitization, unitization, force-pooling, etc?

☒ Yes ☐ No If answer is "yes," type of consolidation unitization

If answer is "no," list the owners and tract descriptions which have actually been consolidated. (Use reverse side of this form if necessary.)

No allowable will be assigned to the well until all interests have been consolidated (by communitization, unitization, forced-pooling, or otherwise) or until a non-standard unit, eliminating such interests, has been approved by the Commission.



CERTIFICATION

I hereby certify that the information contained herein is true and complete to the best of my knowledge and belief.

James B. Shepherd
Name

James B. Shepherd

Position

District Production Manager

Company

Coastal States Gas Prod. Co.

Date

May 30, 1974

I hereby certify that the well location shown on this plat was plotted from field notes of actual surveys made by me or under my supervision, and that the same is true and correct to the best of my knowledge and belief.

Date Surveyed

FEBRUARY 27-28, 1974

Registered Professional Engineer and/or Land Surveyor

John W. West
Signature

Certificate No.

676

320 660 190 1320 1660 1980 2310 2640 2000 1600 1000 600