

UNITED STATES  
DEPARTMENT OF THE INTERIOR  
GEOLOGICAL SURVEY

## APPLICATION FOR PERMIT TO DRILL, DEEPEN, OR PLUG BACK

## 1a. TYPE OF WORK

DRILL ☒DEEPEN ☐PLUG BACK ☐

## b. TYPE OF WELL

OIL  
WELL ☒GAS  
WELL ☐

OTHER

SINGLE  
ZONE ☒MULTIPLE  
ZONE ☐

## 2. NAME OF OPERATOR

Coastal States Gas Producing Company

## 3. ADDRESS OF OPERATOR

P. O. Box 235, Midland, Texas 79701

## 4. LOCATION OF WELL (Report location clearly and in accordance with any State requirements.\*)

At surface

1980' FSL &amp; 660' FEL

At proposed prod. zone

## 14. DISTANCE IN MILES AND DIRECTION FROM NEAREST TOWN OR POST OFFICE\*

14 miles west of Crossroads

## 10. DISTANCE FROM PROPOSED\*

LOCATION TO NEAREST

PROPERTY OR LEASE LINE, FT.

(Also to nearest drlg. unit line, if any)

4620'

## 16. NO. OF ACRES IN LEASE

4960

17. NO. OF ACRES ASSIGNED  
TO THIS WELL

40

## 18. DISTANCE FROM PROPOSED LOCATION\*

TO NEAREST WELL, DRILLING, COMPLETED,  
OR APPLIED FOR, ON THIS LEASE, FT.

1323'

## 19. PROPOSED DEPTH

4600'

## 20. ROTARY OR CABLE TOOLS

Rotary

## 21. ELEVATIONS (Show whether DF, RT, GR, etc.)

4307.9 GR

## 22. APPROX. DATE WORK WILL START\*

Upon Approval

## 23.

## PROPOSED CASING AND CEMENTING PROGRAM

SIZE OF HOLE	SIZE OF CASING	WEIGHT PER FOOT	SETTING DEPTH	QUANTITY OF CEMENT
11"	8-5/8"	24#	330'	235 ex. Class H 2% CaCl
7-7/8"	5-1/2"	15.5#	4600'	175 ex. 30-30 Class C Pozmix A 8# salt, 0.75% CFR-2 Approx. top of cement @ 3600'

IN ABOVE SPACE DESCRIBE PROPOSED PROGRAM: If proposal is to deepen or plug back, give data on present productive zone and proposed new productive zone. If proposal is to drill or deepen directionally, give pertinent data on subsurface locations and measured and true vertical depths. Give blowout preventer program, if any.

24.

SIGNED

TITLE

Dist. Prod. Manager

DATE

3-6-74

(This space for Federal or State office use)

PERMIT NO.

APPROVED BY

TITLE

CONDITIONS OF APPROVAL, IF ANY:

APPROVED  
MAR 13 1974  
ARTHUR R. BROWN  
DISTRICT ENGINEER

\*See Instructions On Reverse Side

## Instructions

**General:** This form is designed for submitting proposals to perform certain well operations, as indicated, on all types of lands and leases for appropriate action by either a Federal or a State agency, or both, pursuant to applicable Federal and/or State laws and regulations. Any necessary special instructions concerning the use of this form and the number of copies to be submitted, particularly with regard to local, area, or regional procedures and practices, either are shown below or will be issued by, or may be obtained from, the local Federal and/or State office.

**Item 1:** If the proposal is to redrill to the same reservoir at a different subsurface location or to a new reservoir, use this form with appropriate notations. Consult applicable State or Federal regulations concerning subsequent work proposals or reports on the well.

**Item 4:** If there are no applicable State requirements, locations on Federal or Indian land should be described in accordance with Federal requirements. Consult local State or Federal office for specific instructions.

**Item 14:** Needed only when location of well cannot readily be found by road from the land or lease description. A plat, or plats, separate or on this reverse side, showing the roads to, and the surveyed location of, the well, and any other required information, should be furnished when required by Federal or State agency offices.

**Items 15 and 18:** If well is to be, or has been directionally drilled, give distances for subsurface location of hole in any present or objective production zone.

**Item 22:** Consult applicable Federal or State regulations, or appropriate officials, concerning approval of the proposal before operations are started.

NEW MEXICO OIL CONSERVATION COMMISSION  
WELL LOCATION AND ACREAGE DEDICATION PLAT

Form C-102  
Supersedes C-128  
Effective 1-1-65

All distances must be from the outer boundaries of the Section.

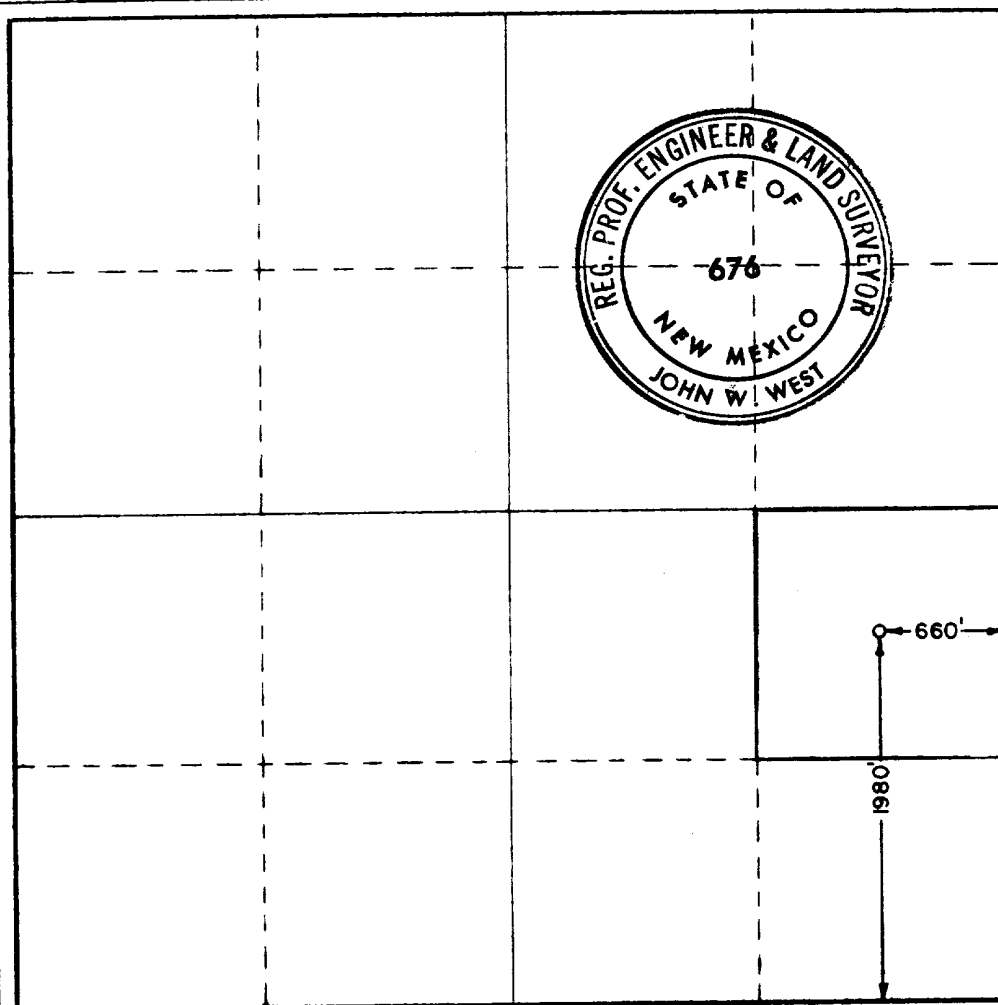
Operator <b>COASTAL STATES GAS PRODUCING CO.</b>			Lease <b>TRACT 1-A</b>		Well No. <b>8</b>
Unit Letter <b>1</b>	Section <b>29</b>	Township <b>9 SOUTH</b>	Range <b>33 EAST</b>	County <b>LEA</b>	
Actual Footage Location of Well: <b>1980</b> feet from the <b>SOUTH</b> line and <b>660</b> feet from the <b>EAST</b> line					
Ground Level Elev. <b>4307.9</b>	Producing Formation <b>San Andres</b>		Pool <b>Flying "M" San Andres</b>		Dedicated Acreage: <b>40</b> Acres

- Outline the acreage dedicated to the subject well by colored pencil or hatchure marks on the plat below.
- If more than one lease is dedicated to the well, outline each and identify the ownership thereof (both as to working interest and royalty).
- If more than one lease of different ownership is dedicated to the well, have the interests of all owners been consolidated by communitization, unitization, force-pooling, etc?

☒ Yes ☐ No If answer is "yes," type of consolidation unitization

If answer is "no," list the owners and tract descriptions which have actually been consolidated. (Use reverse side of this form if necessary.)

No allowable will be assigned to the well until all interests have been consolidated (by communitization, unitization, forced-pooling, or otherwise) or until a non-standard unit, eliminating such interests, has been approved by the Commission.



CERTIFICATION

I hereby certify that the information contained herein is true and complete to the best of my knowledge and belief.

*John W. West*  
Name

Position  
**District Production Manager**

Company  
**Coastal States Gas Prod. Co.**

Date  
**3-5-74**

I hereby certify that the well location shown on this plat was plotted from field notes of actual surveys made by me or under my supervision, and that the same is true and correct to the best of my knowledge and belief.

Date Surveyed  
**FEBRUARY 27-28, 1974**

Registered Professional Engineer and/or Land Surveyor

*John W. West*  
Certificate No.

**676**

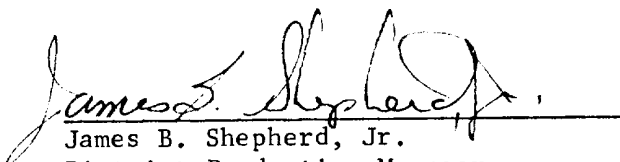
DEVELOPMENT PLAN FOR SURFACE USE

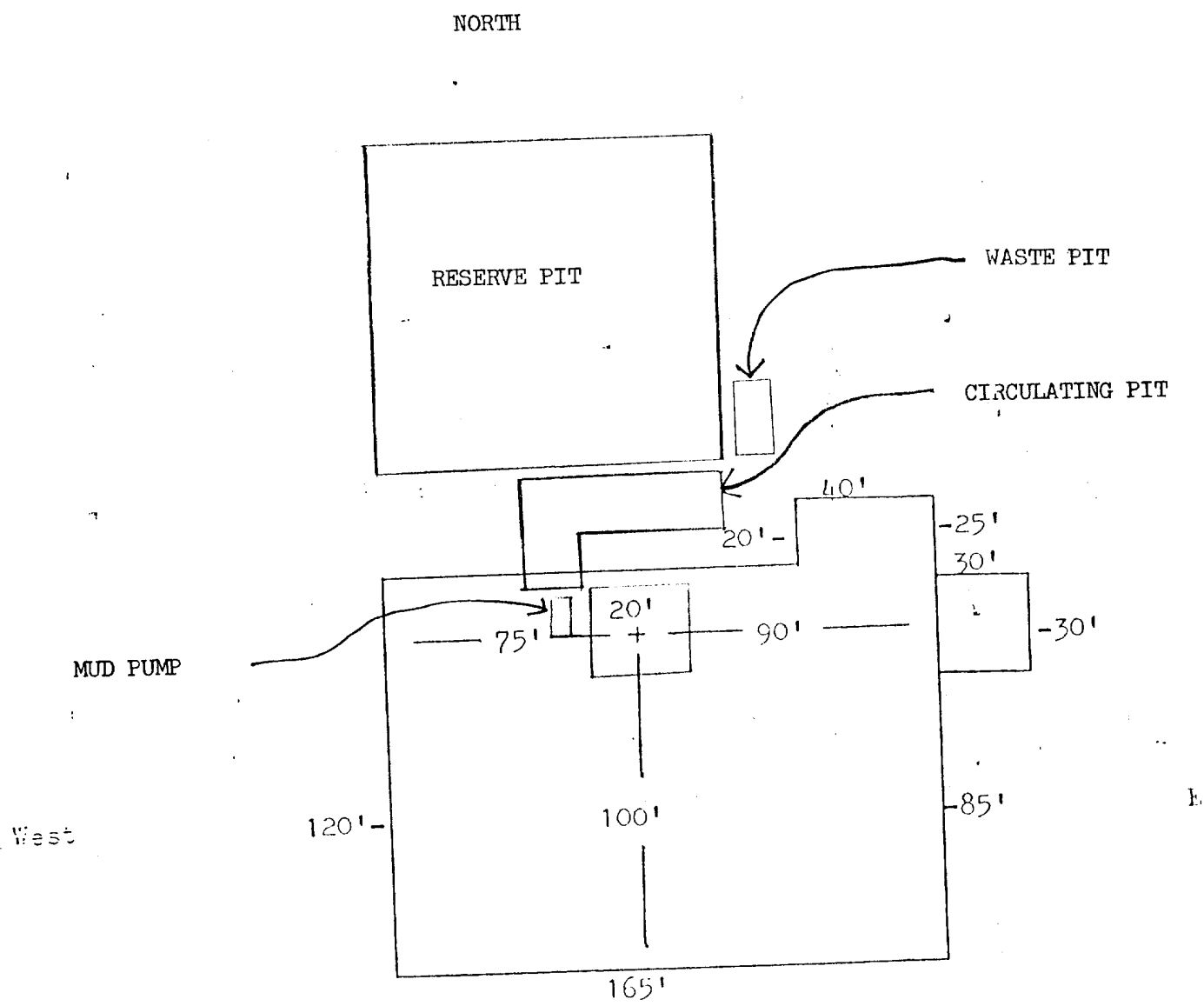
1. See Exhibit No. 1.
2. See Exhibit No. 1.
3. See Exhibit No. 1.
4. See Exhibit No. 1.
5. See Exhibit No. 2.
6. Water for drilling operations will be hauled by truck from Crossroads, New Mexico.
7. Hard waste material, such as, pipe, lumber, bits, etc. will be removed from location upon completion of drilling operations. Soft waste material, such as cuttings, paper boxes, etc. will be placed in a waste pit below ground level and covered with a minimum of 24" of top soil.
8. Not applicable.
9. Not applicable.
10. See Exhibit No. 3. The location will be 6" compact caliche.
11. Upon completion of drilling operations, pits will be broken out and leveled. Location will be cleaned with pad, roads, turn-arounds, etc. necessary for production operations left remaining.
12. The immediate area around this location is ranch land. The land is flat, low, schinery type bush vegetation. We feel that no extensive or permanent damage will be done to the environment as a result of drilling operations.

Company Representative responsible for compliance with this plan:

Johnnie Arther  
HOME: 505/392-8263  
MOBILE: 505/397-3291, Unit #200

COASTAL STATES GAS PRODUCING COMPANY

  
James B. Shepherd, Jr.  
District Production Manager  
March 6, 1974



# EXHIBIT 3

LOCATION WILL BE 6" COMPACT CALICHE

SCALE : 1" = 48'

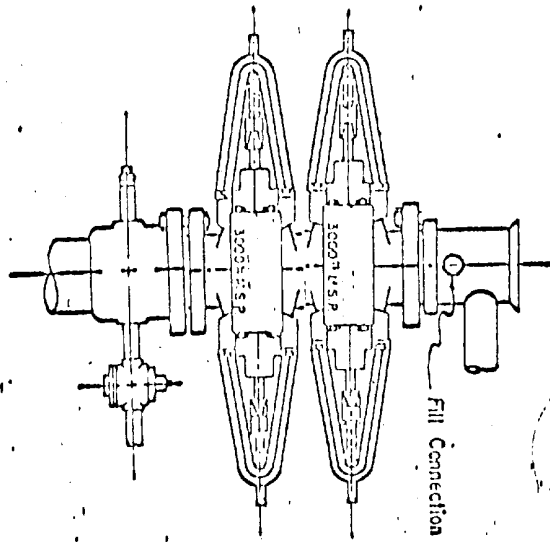


EXHIBIT 4



February 27, 1974

Coastal States Gas Producing Company  
P.O. Box 235  
Midland, Texas

ATTENTION: Mr. Jim Shepherd

Dear Mr. Shepherd,

Thank you for the opportunity to submit our proposed mud program for your "San Andres Unit Track I-A", Flying M Field, Lea County, New Mexico.

If we can be of further service, please do not hesitate to call.

Yours truly,

IMCO SERVICES

Bob Ray,  
Area Technical Advisor,  
Midland, Texas.

BR/gk

**EXHIBIT 5**

**IMCO SERVICES**

A Division of HALLIBURTON Company • 2400 West Loop South • P. O. Box 22605 • Houston, Texas 77027 • 713/622-5555 • Telex: 76-2433 • Cable: IMCOSERV

PROPOSED MUD PROGRAM

COASTAL STATES GAS PRODUCING COMPANY  
SAN ANDRES UNIT TRACK I-A  
FLYING M FIELD  
LEA COUNTY, NEW MEXICO

PROPOSED DEPTH: 4,500'

SUGGESTED CASING:

8-5/8" Surface at 350'

PROPOSED MUD PROGRAM BY CASING INTERVAL

<u>DEPTH (FEET)</u>	<u>MUD WEIGHT (PPG)</u>	<u>VISCOSITY (SEC)</u>	<u>FLUID LOSS (ML)</u>	<u>MUD TYPE</u>
0- 350'	8.4 - 8.6	32 - 34	No Control	Native Mud
<p>Drill the surface interval using native mud. Use IMCO-Gel if increases in viscosity are necessary.</p> <p>Set 8-5/8" at 350'.</p>				
350- 4,200'	10.0 - 10.4	32 - 34	No Control	Native Mud
<p>Drill out from under surface with native mud. Red Beds can be troublesome out from surface. It is important to maintain a constant viscosity to minimize problems from the Red Beds. At approximately 1,800', add oil. Use paper to minimize filter cake build up.</p>				
4,200- 4,500'	10.0 - 10.4	33 - 35	10	Native Mud/Star

Use IMCO-Loid to reduce the fluid loss to 10 cc's at 4,200'.

ESTIMATED MUD COST:

\$1,800.00.