

UNITED STATES
DEPARTMENT OF THE INTERIOR
GEOLOGICAL SURVEY

APPLICATION FOR PERMIT TO DRILL, DEEPEN, OR PLUG BACK

1a. TYPE OF WORK

DRILL ☒DEEPEN ☐PLUG BACK ☐

b. TYPE OF WELL

OIL
WELL ☒GAS
WELL ☐OTHER ☐SINGLE
ZONE ☒MULTIPLE
ZONE ☐

2. NAME OF OPERATOR

Coastal States Gas Producing Company

3. ADDRESS OF OPERATOR

P. O. Box 235, Midland, Texas 79701

4. LOCATION OF WELL (Report location clearly and in accordance with any State requirements.)*

At surface

660' FNL & 660' FNL

At proposed prod. zone

14. DISTANCE IN MILES AND DIRECTION FROM NEAREST TOWN OR POST OFFICE*

14 miles west Crossroads

10. DISTANCE FROM PROPOSED*

LOCATION TO NEAREST
PROPERTY OR LEASE LINE, FT.
(Also to nearest drlg. unit line, if any)

2087'

16. NO. OF ACRES IN LEASE

4960

17. NO. OF ACRES ASSIGNED
TO THIS WELL

40

18. DISTANCE FROM PROPOSED LOCATION*
TO NEAREST WELL, DRILLING, COMPLETED,
OR APPLIED FOR, ON THIS LEASE, FT.

1333'

19. PROPOSED DEPTH

4600'

20. ROTARY OR CABLE TOOLS

Rotary

21. ELEVATIONS (Show whether DF, RT, GR, etc.)

4351.4 GR

22. APPROX. DATE WORK WILL START*

Upon Approval

23.

PROPOSED CASING AND CEMENTING PROGRAM

SIZE OF HOLE	SIZE OF CASING	WEIGHT PER FOOT	SETTING DEPTH	QUANTITY OF CEMENT
11"	8-5/8"	24#	350'	235 ex. Class B 2% CaCl
7-7/8"	5-1/2"	15.5#	4600'	175 ex. 50-50 Class C Pozmix A
				8# salt, 0.75% CFR-2
				Approx. top of cement @ 3600'

IN ABOVE SPACE DESCRIBE PROPOSED PROGRAM: If proposal is to deepen or plug back, give data on present productive zone and proposed new productive zone. If proposal is to drill or deepen directionally, give pertinent data on subsurface locations and measured and true vertical depths. Give blowout preventer program, if any.

24.

SIGNED

TITLE Dist. Prod. ManagerDATE 3-6-74

(This space for Federal or State office use)

PERMIT NO. _____

APPROVAL BY

APPROVED
MAR 13 1974

APPROVED BY _____

TITLE _____

ARTHUR R. BROWN
DISTRICT ENGINEER

CONDITIONS OF APPROVAL, IF ANY:

*See Instructions On Reverse Side

Instructions

General: This form is designed for submitting proposals to perform certain well operations, as indicated, on all types of lands and leases for appropriate action by either a Federal or a State agency, or both, pursuant to applicable Federal and/or State laws and regulations. Any necessary special instructions concerning the use of this form and the number of copies to be submitted, particularly with regard to local, area, or regional procedures and practices, either are shown below or will be issued by, or may be obtained from, the local Federal and/or State office.

Item 1: If the proposal is to redrill to the same reservoir at a different subsurface location or to a new reservoir, use this form with appropriate notations. Consult applicable State or Federal regulations concerning subsequent work proposals or reports on the well.

Item 4: If there are no applicable State requirements, locations on Federal or Indian land should be described in accordance with Federal requirements. Consult local State or Federal office for specific instructions.

Item 14: Needed only when location of well cannot readily be found by road from the land or lease description. A plat, or plats, separate or on this reverse side, showing the roads to, and the surveyed location of, the well, and any other required information, should be furnished when required by Federal or State agency offices.

Items 15 and 18: If well is to be, or has been directionally drilled, give distances for subsurface location of hole in any present or objective production zone.

Item 22: Consult applicable Federal or State regulations, or appropriate officials, concerning approval of the proposal before operations are started.

NEW MEXICO OIL CONSERVATION COMMISSION
WELL LOCATION AND ACREAGE DEDICATION PLAT

Form C-102
Supersedes C-128
Effective 1-1-65

All distances must be from the outer boundaries of the Section.

Operator COASTAL STATES GAS PRODUCING CO.		Lease TRACT 1-A		Well No. 9
Unit Letter A	Section 29	Township 9 SOUTH	Range 33 EAST	County LEA

Actual Footage Location of Well:

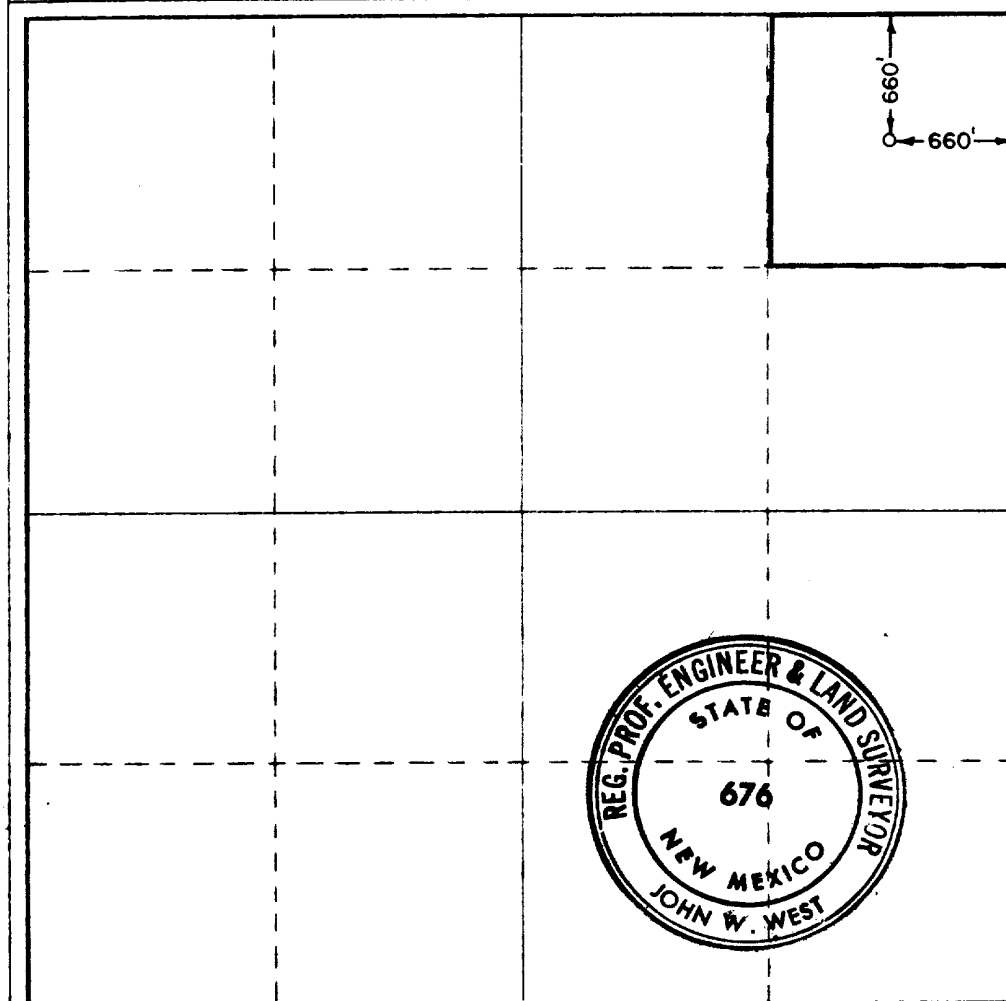
660	feet from the NORTH	line and	660	feet from the EAST	line
Ground Level Elev. 4351.4	Producing Formation San Andres		Pool Flying "M" San Andres		Dedicated Acreage: 40 Acres

1. Outline the acreage dedicated to the subject well by colored pencil or hachure marks on the plat below.
2. If more than one lease is dedicated to the well, outline each and identify the ownership thereof (both as to working interest and royalty).
3. If more than one lease of different ownership is dedicated to the well, have the interests of all owners been consolidated by communitization, unitization, force-pooling, etc?

☒ Yes ☐ No If answer is "yes," type of consolidation Unitization

If answer is "no," list the owners and tract descriptions which have actually been consolidated. (Use reverse side of this form if necessary.) _____

No allowable will be assigned to the well until all interests have been consolidated (by communitization, unitization, forced-pooling, or otherwise) or until a non-standard unit, eliminating such interests, has been approved by the Commission.



CERTIFICATION

I hereby certify that the information contained herein is true and complete to the best of my knowledge and belief.

B. Shepherd
Name

Position

District Production Manager

Company

Coastal States Gas Prod. Co.

Date

3-5-74

I hereby certify that the well location shown on this plat was plotted from field notes of actual surveys made by me or under my supervision, and that the same is true and correct to the best of my knowledge and belief.

Date Surveyed

FEBRUARY 27-28, 1974

Registered Professional Engineer and/or Land Surveyor

John W. West

Certificate No.

676

0 330 660 990 1320 1650 1980 2310 2640 2970 3300 3630 3960 4290 4620 4950 5280 5610 5940 6270 6600

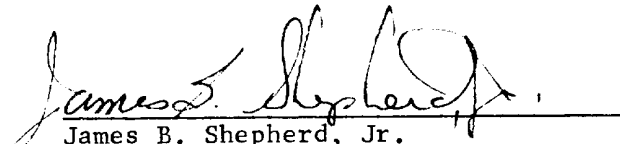
DEVELOPMENT PLAN FOR SURFACE USE

1. See Exhibit No. 1.
2. See Exhibit No. 1.
3. See Exhibit No. 1.
4. See Exhibit No. 1.
5. See Exhibit No. 2.
6. Water for drilling operations will be hauled by truck from Crossroads, New Mexico.
7. Hard waste material, such as, pipe, lumber, bits, etc. will be removed from location upon completion of drilling operations. Soft waste material, such as cuttings, paper boxes, etc. will be placed in a waste pit below ground level and covered with a minimum of 24" of top soil.
8. Not applicable.
9. Not applicable.
10. See Exhibit No. 3. The location will be 6" compact caliche.
11. Upon completion of drilling operations, pits will be broken out and leveled. Location will be cleaned with pad, roads, turn-arounds, etc. necessary for production operations left remaining.
12. The immediate area around this location is ranch land. The land is flat, low, schinery type bush vegetation. We feel that no extensive or permanent damage will be done to the environment as a result of drilling operations.

Company Representative responsible for compliance with this plan:

Johnnie Arther
HOME: 505/392-8263
MOBILE: 505/397-3291, Unit #200

COASTAL STATES GAS PRODUCING COMPANY


James B. Shepherd, Jr.
District Production Manager
March 6. 1974

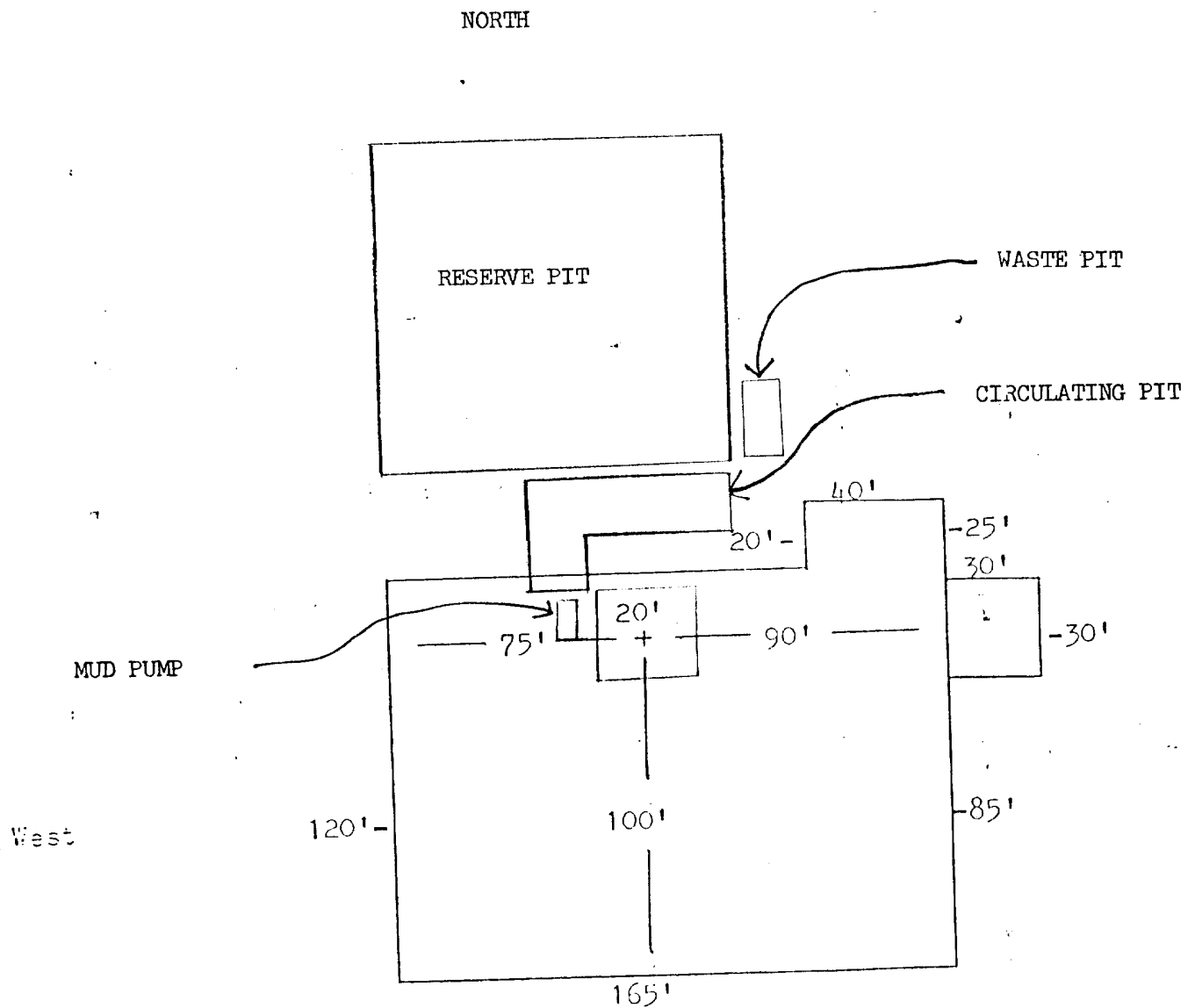
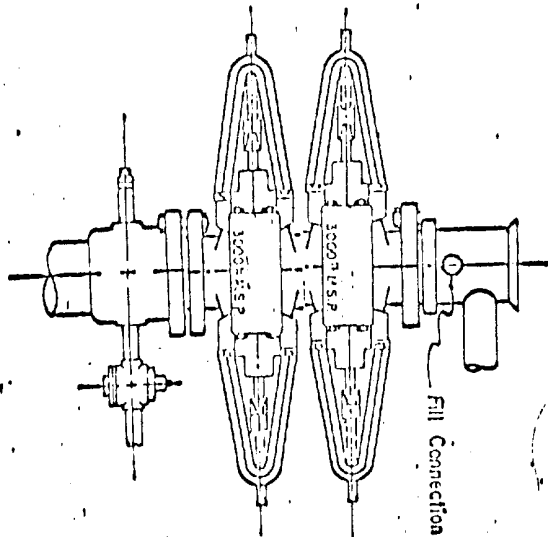


EXHIBIT 3

LOCATION WILL BE 6" COMPACT CALICHE

SCALE : 1" = 48'



3,000 PSI WORKING PRESSURE
BLOWOUT PREVENTER HOOK-UP

Series 900 Flanges, or Better

EXHIBIT 4



February 27, 1974

Coastal States Gas Producing Company
P.O. Box 235
Midland, Texas

ATTENTION: Mr. Jim Shepherd

Dear Mr. Shepherd,

Thank you for the opportunity to submit our proposed mud program for your "San Andres Unit Track I-A", Flying M Field, Lea County, New Mexico.

If we can be of further service, please do not hesitate to call.

Yours truly,

IMCO SERVICES

Bob Ray,
Area Technical Advisor,
Midland, Texas.

BR/gk

EXHIBIT 5

IMCO SERVICES

AIR MAIL - MAILING INSTRUCTIONS: 3400 West Loop South • P. O. Box 22606 • Houston, Texas 77027 • 713/622-5555 • Telex: 76-2433 • Cable: IMCOSERV

PROPOSED MUD PROGRAM

COASTAL STATES GAS PRODUCING COMPANY
SAN ANDRES UNIT TRACK I-A
FLYING M FIELD
LEA COUNTY, NEW MEXICO

PROPOSED DEPTH: 4,500'

SUGGESTED CASING:

8-5/8" Surface at 350'

PROPOSED MUD PROGRAM BY CASING INTERVAL

<u>DEPTH (FEET)</u>	<u>MUD WEIGHT (PPG)</u>	<u>VISCOSITY (SEC)</u>	<u>FLUID LOSS (ML)</u>	<u>MUD TYPE</u>
0- 350'	8.4 - 8.6	32 - 34	No Control	Native Mud
Drill the surface interval using native mud. Use IMCO-Gel if increases in viscosity are necessary.				
Set 8-5/8" at 350'.				
350- 4,200'	10.0 - 10.4	32 - 34	No Control	Native Mud
Drill out from under surface with native mud. Red Beds can be troublesome out from surface. It is important to maintain a constant viscosity to minimize problems from the Red Beds. At approximately 1,800', add oil. Use paper to minimize filter cake build up.				
4,200- 4,500'	10.0 - 10.4	33 - 35	10	Native Mud/Star

Use IMCO-Loid to reduce the fluid loss to 10 cc's at 4,200'.

ESTIMATED MUD COST:

\$1,800.00.