

NO. OF COPIES RECEIVED	
DISTRIBUTION	
DATE	
FILE	
U.S.G.S.	
LAND OFFICE	
OPERATOR	

NEW MEXICO OIL CONSERVATION COMMISSION

Form C-101
Revised 1-1-65

5A. Indicate Type of Lease	
STATE <input checked="" type="checkbox"/>	FEE <input type="checkbox"/>
5. State Oil & Gas Lease No.	
L-494	
7. Unit Agreement Name	
8. Farm or Lease Name	
Midwest-State	
9. Well No.	
2	
10. Field and Pool or Warrant	
Vada (Penn.)	
12. County	
Lea	
19. Proposed Depth	19A. Formation
9620'	Bough "C"
20. Rotary or C.T.	
Rotary	
21. Elevations (Show whether DF, RT, etc.)	21A. Kind & Status Plug. Bond
4341' GL	Statewide
21B. Drilling Contractor	22. Approx. Date Work will start
M-G-F Drilling Co.	5-7-74

APPLICATION FOR PERMIT TO DRILL, DEEPEN, OR PLUG BACK

1a. Type of Work	
b. Type of Well	
DRILL <input checked="" type="checkbox"/>	DEEPEN <input type="checkbox"/>
OIL WELL <input checked="" type="checkbox"/>	GAS WELL <input type="checkbox"/>
2. Name of Operator	
Stallworth Oil & Gas	
3. Address of Operator	
407 West Missouri Avenue, Midland, Texas 79701	
4. Location of Well	
UNIT LETTER F	LOCATED 1980
FEET FROM THE West LINE	
AND 1980	FEET FROM THE North LINE OF SEC. 2
TWP. 9-S RGE. 33-E NMPM	
19. Proposed Depth	
9620'	
19A. Formation	
Bough "C"	
20. Rotary or C.T.	
Rotary	
21. Elevations (Show whether DF, RT, etc.)	21A. Kind & Status Plug. Bond
4341' GL	Statewide
21B. Drilling Contractor	22. Approx. Date Work will start
M-G-F Drilling Co.	5-7-74

23.

PROPOSED CASING AND CEMENT PROGRAM

SIZE OF HOLE	SIZE OF CASING	WEIGHT PER FOOT	SETTING DEPTH	SACKS OF CEMENT	EST. TOP
17-1/2"	12-3/4"	34.5#	400'	400	Surface
12"	8-5/8"	24 & 32#	3900'	400	2700'
7-7/8"	5-1/2"	15.5 & 17#	9620'	500	7000'

This well will be drilled with rotary tools using water to 7000' and mud to total depth.

A blowout preventer stack will be installed on the 8-5/8" intermediate casing prior to drilling out with 7-7/8" bit at 3900'. The surface and intermediate casing strings will be pressure tested prior to drilling out.

Anticipated depth of the Bough "C" Formation is 9520'. The 5-1/2" casing will be perforated and stimulated with acid as conditions warrant.

Surface Formation is Quaternary Age sandstone.

No coring is anticipated. One drill stem test is planned.

Logs will be open hole Gamma/Acoustic, Laterolog and Microlaterolog.

APPROVAL VALID

FOR 90 DAYS UNLESS
DRILLING COMMENCED,

EXPIRES

July 27, 1974

IN ABOVE SPACE DESCRIBE PROPOSED PROGRAM: IF PROPOSAL IS TO DEEPEN OR PLUG BACK, GIVE DATA ON PRESENT PRODUCTIVE ZONE AND PROPOSED NEW PRODUCTIVE ZONE. GIVE BLOWOUT PREVENTER PROGRAM, IF ANY.

I hereby certify that the information above is true and complete to the best of my knowledge and belief.

Signed Murray E. Helmers Title Production Manager Date April 26, 1974

(This space for State Use)

APPROVED BY John W. Runyan TITLE Geologist DATE APR 28 1974

CONDITIONS OF APPROVAL, IF ANY:

**NEW MEXICO OIL CONSERVATION COMMISSION
WELL LOCATION AND ACREAGE DEDICATION PLAT**

Form C-102
Supersedes C-100
Effective 1-1-65

All distances must be from the corner boundaries of the Section

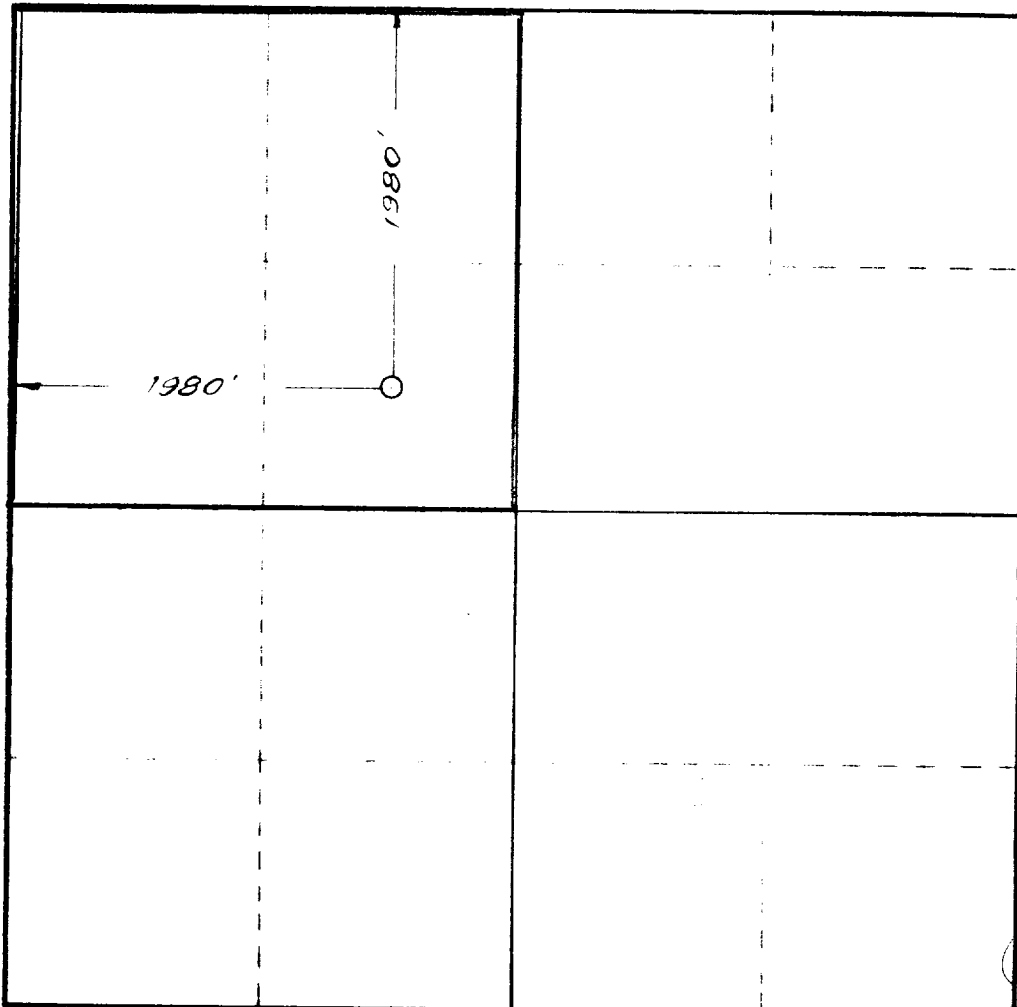
STALLWORTH OIL & GAS			Lease MIDWEST - STATE			Well No. 2
F	2	Township 9 South	33 East	Range		County Lea
Section 2, 1980 feet from the North line and 1980 feet from the West line						
Producing Formation Bough "C"			Pool Vada (Penn.)		Dedicated Acreage: 160 Acres	
Section 2, 1980 feet from the North line and 1980 feet from the West line						

1. Outline the acreage dedicated to the subject well by colored pencil or hatchure marks on the plat below.
2. If more than one lease is dedicated to the well, outline each and identify the ownership thereof (both as to working interest and royalty).
3. If more than one lease of different ownership is dedicated to the well, have the interests of all owners been consolidated by communitization, unitization, force-pooling, etc?

☒ Yes ☐ No If answer is "yes," type of consolidation **NW/4 of Section 2 is a common lease, no communitization required.**

If answer is "no," list the owners and tract descriptions which have actually been consolidated. (Use reverse side of this form if necessary.) _____

No allowable will be assigned to the well until all interests have been consolidated (by communitization, unitization, forced-pooling, or otherwise) or until a non-standard unit, eliminating such interests, has been approved by the Commission.



CERTIFICATION

I hereby certify that the information contained herein is true and complete to the best of my knowledge and belief.

Name *Murray E. Helmers*
Position **Production Manager**

Company **Stallworth Oil & Gas**

Date **April 25, 1974**

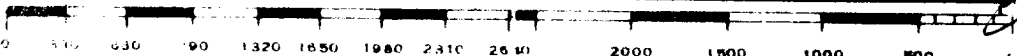
I hereby certify that the well location shown on this plat was plotted from field notes of actual surveys made by me or under my supervision, and that the same is true and correct to the best of my knowledge and belief.

Date Surveyed **April 23, 1974**

Registered Professional Engineer and/or Land Surveyor

John W. Shearn

Certificate No. **1559**



173

RECEIVED
OIL CONSERVATION COMM.
HOUSTON, TEX.