



**N. MEXICO OIL CONSERVATION COMMISSION**  
**WELL LOCATION AND ACREAGE DEDICATION PLAT**

Form C-102  
 Supersedes C-128  
 Effective 1-1-65

All distances must be from the outer boundaries of the Section.

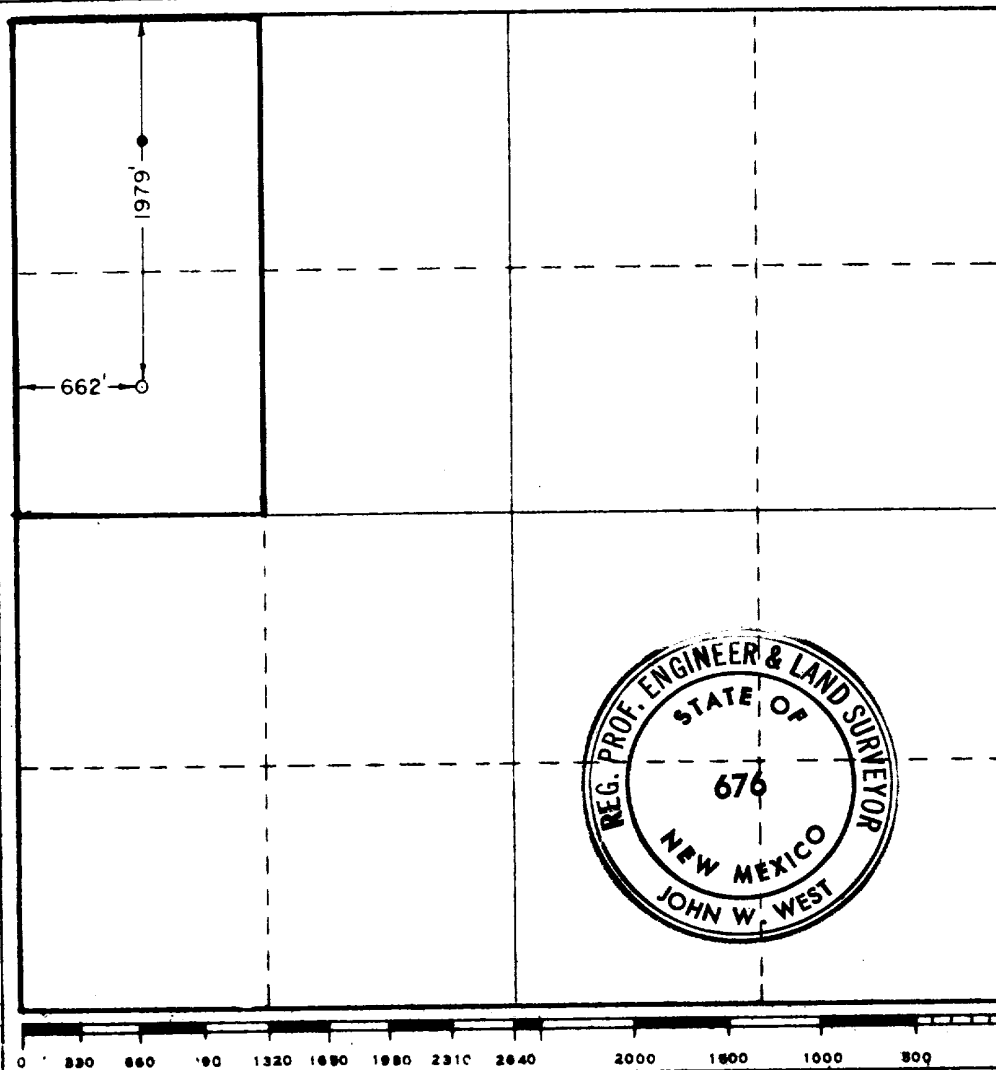
Operator <b>COASTAL STATES GAS PRODUCING COMPANY</b>			Lease <b>FLYING "M" SAN ANDRES UNIT TRACT 25</b>		Well No. <b>5</b>
Unit Letter <b>E</b>	Section <b>28</b>	Township <b>9 SOUTH</b>	Range <b>33 EAST</b>	County <b>LEA</b>	
Actual Footage Location of Well: <b>1979</b> feet from the <b>NORTH</b> line and <b>662</b> feet from the <b>WEST</b> line					
Ground Level Elev. <b>4342.2</b>	Producing Formation <b>SAN ANDRES</b>		Pool <b>FLYING "M" SAN ANDRES</b>		Dedicated Acreage: <b>80</b> Acres

1. Outline the acreage dedicated to the subject well by colored pencil or hatchure marks on the plat below.
2. If more than one lease is dedicated to the well, outline each and identify the ownership thereof (both as to working interest and royalty).
3. If more than one lease of different ownership is dedicated to the well, have the interests of all owners been consolidated by communitization, unitization, force-pooling, etc?

☒ Yes    ☐ No    If answer is "yes," type of consolidation unitization

If answer is "no," list the owners and tract descriptions which have actually been consolidated. (Use reverse side of this form if necessary.) \_\_\_\_\_

No allowable will be assigned to the well until all interests have been consolidated (by communitization, unitization, forced-pooling, or otherwise) or until a non-standard unit, eliminating such interests, has been approved by the Commission.



**CERTIFICATION**

I hereby certify that the information contained herein is true and complete to the best of my knowledge and belief.

*James B. Shepherd, Jr.*  
 Name

James B. Shepherd, Jr.

Position  
 District Production Manager

Company  
 Coastal States Gas Prod. Co.

Date  
 May 23, 1974

I hereby certify that the well location shown on this plat was plotted from field notes of actual surveys made by me or under my supervision, and that the same is true and correct to the best of my knowledge and belief.

Date Surveyed  
 MAY 20, 1974

Registered Professional Engineer and/or Land Surveyor

*John W. West*  
 Certificate No. 676