

NEW MEXICO OIL CONSERVATION COMMISSION
WELL LOCATION AND ACREAGE DEDICATION PLAT

Form C-102
Supersedes C-128
Effective 1-1-65

All distances must be from the outer boundaries of the Section

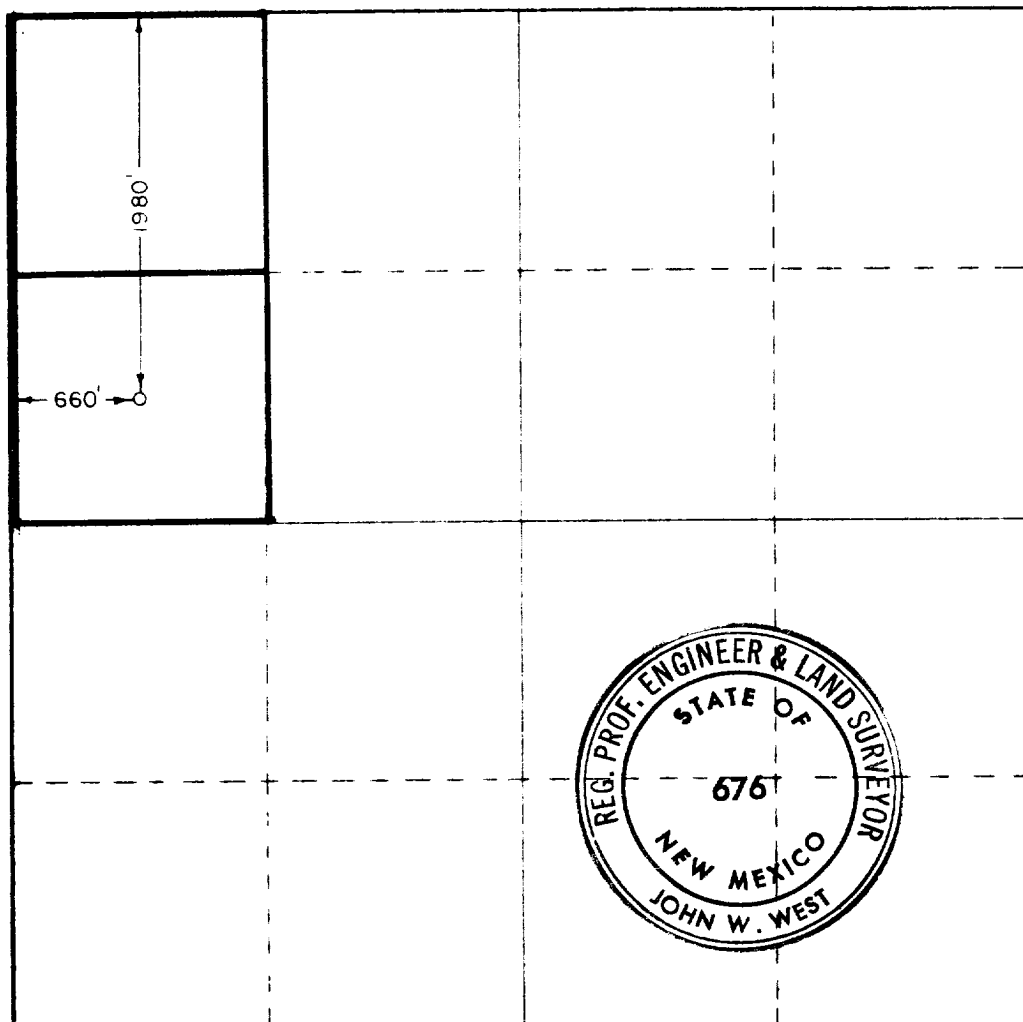
Operator TEXAS OIL & GAS CORPORATION			Lease STATE OF NEW MEXICO "A" State		Well No. 1
Tract Letter E	Section 11	Township 10 SOUTH	Range 32 EAST	County LEA	
Actual Footage Location of Well:					
1980		feet from the NORTH	line and 660	feet from the WEST	line
Ground Level Elev. 4286.8	Producing Formation Cisco		Pool Mescalero, N.	Dedicated Acreage: 80 40	

1. Outline the acreage dedicated to the subject well by colored pencil or hachure marks on the plat below.
2. If more than one lease is dedicated to the well, outline each and identify the ownership thereof (both as to working interest and royalty).
3. If more than one lease of different ownership is dedicated to the well, have the interests of all owners been consolidated by communitization, unitization, force-pooling, etc?

☐ Yes ☐ No If answer is "yes," type of consolidation _____

If answer is "no," list the owners and tract descriptions which have actually been consolidated. (Use reverse side of this form if necessary.) _____

No allowable will be assigned to the well until all interests have been consolidated (by communitization, unitization, forced-pooling, or otherwise) or until a non-standard unit, eliminating such interests, has been approved by the Commission.



CERTIFICATION

I hereby certify that the information contained herein is true and complete to the best of my knowledge and belief.

Name
J. R. Colter

Position
Staff Engineer

Company
Texas Oil & Gas Corp.

Date
May 29, 1974

I hereby certify that the well location shown on this plat was plotted from field notes of actual surveys made by me or under my supervision, and that the same is true and correct to the best of my knowledge and belief.

Date Surveyed
MAY 25, 1974

Registered Professional Engineer and/or Land Surveyor

Certificate No. **676**

