

NEW MEXICO OIL CONSERVATION COMMISSION
WELL LOCATION AND ACREAGE DEDICATION PLAT

Form C-102
 Supersedes C-128
 Effective 1-1-65

All distances must be from the outer boundaries of the Section

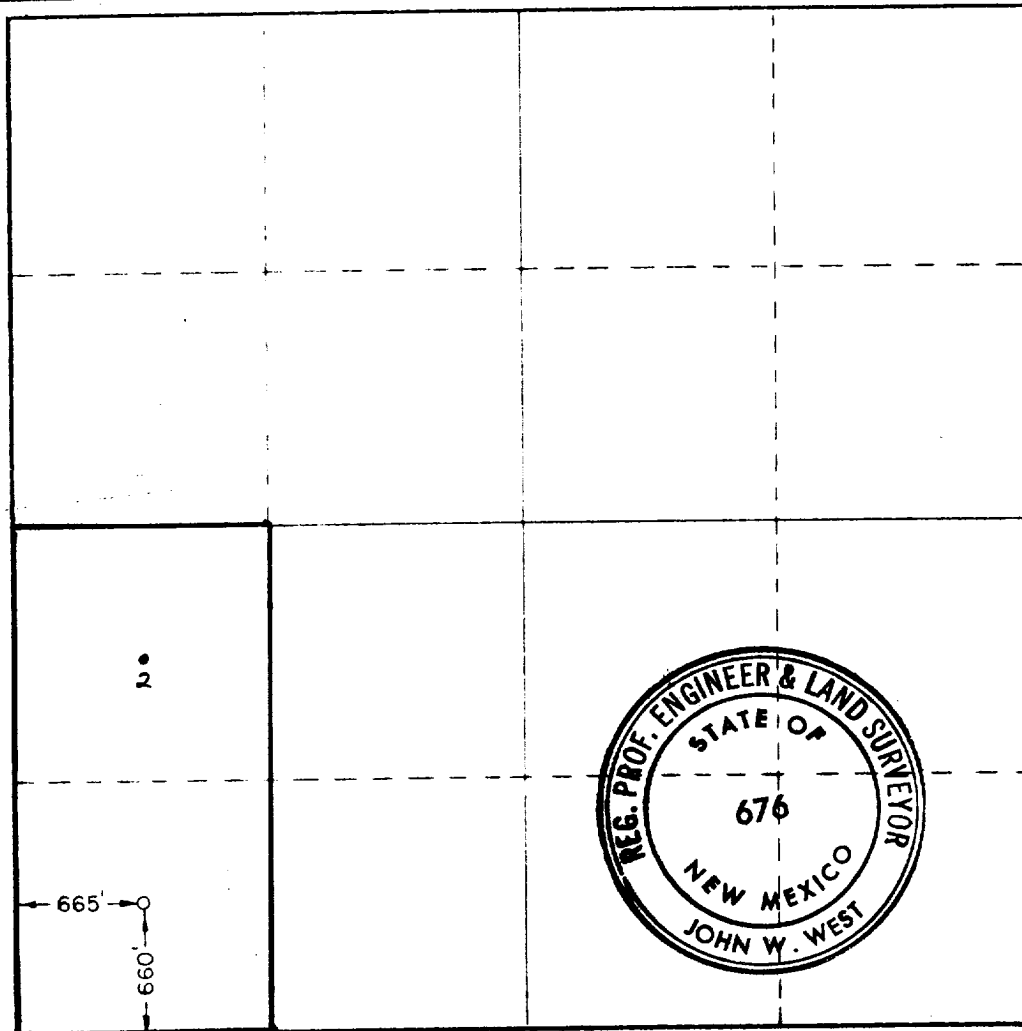
Operator COASTAL STATES GAS PRODUCING CO.			Lease FLYING M SAN ANDRES UNIT TRACT 17		Well No. 4
Unit Letter M	Section 21	Township 9 SOUTH	Range 33 EAST	County LEA	
Actual Footage Location of Well.					
660 feet from the SOUTH line and		665 feet from the WEST line			
Ground Level Elev. 4365.4	Producing Formation SAN ANDRES	Pool FLYING "M" SAN ANDRES		Dedicated Acreage: 80 Acres	

1. Outline the acreage dedicated to the subject well by colored pencil or hachure marks on the plat below.
2. If more than one lease is dedicated to the well, outline each and identify the ownership thereof (both as to working interest and royalty).
3. If more than one lease of different ownership is dedicated to the well, have the interests of all owners been consolidated by communitization, unitization, force-pooling, etc?

☒ Yes ☐ No If answer is "yes," type of consolidation unitization

If answer is "no," list the owners and tract descriptions which have actually been consolidated. (Use reverse side of this form if necessary.) _____

No allowable will be assigned to the well until all interests have been consolidated (by communitization, unitization, forced-pooling, or otherwise) or until a non-standard unit, eliminating such interests, has been approved by the Commission.



CERTIFICATION

I hereby certify that the information contained herein is true and complete to the best of my knowledge and belief.

Dick Morton
 Name

Dick Morton

Position
 District Engineer

Company
 Coastal States Gas Prod. Co.

Date
 June 7, 1974

I hereby certify that the well location shown on this plat was plotted from field notes of actual surveys made by me or under my supervision, and that the same is true and correct to the best of my knowledge and belief.

Date Surveyed
 JUNE 4, 1974

Registered Professional Engineer and/or Land Surveyor

John W. West
 Certificate No.

676

0 330 660 990 1320 1650 1980 2310 2640 2000 1600 1200 800