

UNITED STATES  
DEPARTMENT OF THE INTERIOR  
GEOLOGICAL SURVEY

## APPLICATION FOR PERMIT TO DRILL, DEEPEN, OR PLUG BACK

## 1a. TYPE OF WORK

DRILL ☒DEEPEN ☐PLUG BACK ☐

## b. TYPE OF WELL

OIL  
WELL ☒GAS  
WELL ☐

OTHER

SINGLE  
ZONE ☒MULTIPLE  
ZONE ☐

## 2. NAME OF OPERATOR

John L. Cox

## 3. ADDRESS OF OPERATOR

Box 2217, Midland, Texas 79701

## 4. LOCATION OF WELL (Report location clearly and in accordance with any State requirements.)\*

At surface

860' FNL &amp; 1980' FWL

At proposed prod. zone

## 14. DISTANCE IN MILES AND DIRECTION FROM NEAREST TOWN OR POST OFFICE\*

7 miles East, Crossroads, New Mexico

## 15. DISTANCE FROM PROPOSED\*

LOCATION TO NEAREST  
PROPERTY OR LEASE LINE, FT.  
(Also to nearest drlg. unit line, if any)

860'

## 16. NO. OF ACRES IN LEASE

80

17. NO. OF ACRES ASSIGNED  
TO THIS WELL

40

18. DISTANCE FROM PROPOSED LOCATION\*  
TO NEAREST WELL, DRILLING, COMPLETED,  
OR APPLIED FOR, ON THIS LEASE, FT.

1120'

## 19. PROPOSED DEPTH

5100'

## 20. ROTARY OR CABLE TOOLS

Rotary

## 21. ELEVATIONS (Show whether DF, RT, GR, etc.)

3967.8 Gr.

## 22. APPROX. DATE WORK WILL START\*

Upon approval

## 23.

## PROPOSED CASING AND CEMENTING PROGRAM

SIZE OF HOLE	SIZE OF CASING	WEIGHT PER FOOT	SETTING DEPTH	QUANTITY OF CEMENT
12 1/4"	8 5/8"	20#	400	375 sx. Circulated
7 7/8"	4 1/2"	9.5#	5100	350 sx.

8 5/8" casing to be cemented with 375 sx. Class H cement with 2% Calcium Chloride. This is ample cement to circulate to surface.

4 1/2" casing to be cemented with 350 sx. Class C cement, 50-50 pozmix with 2% gel, 8# salt/sack and 0.75% CFR2 preceded by 500 gallon mud flush.

Mud Program: Water, gel, lime 0 - 400'  
Native Redbed mud 400' - 4700'  
Low solids salt gel-starch mud 4700' - TD

IN ABOVE SPACE DESCRIBE PROPOSED PROGRAM: If proposal is to deepen or plug back, give data on present productive zone and proposed new productive zone. If proposal is to drill or deepen directionally, give pertinent data on subsurface locations and measured and true vertical depths. Give blowout preventer program, if any.

## 24.

SIGNED

TITLE

Production Clerk

DATE

8-8-74

(This space for Federal or State office use)

PERMIT NO.

APPROVED BY

TITLE

CONDITIONS OF APPROVAL, IF ANY:

APPROVED  
AUG 15 1974  
ARTHUR R. BROWN  
DISTRICT ENGINEER

\*See Instructions On Reverse Side

NEW MEXICO OIL CONSERVATION COMMISSION  
WELL LOCATION AND ACREAGE DEDICATION PLAT

Form C-102  
Supersedes C-128  
Effective 1-1-65

All distances must be from the outer boundaries of the Section

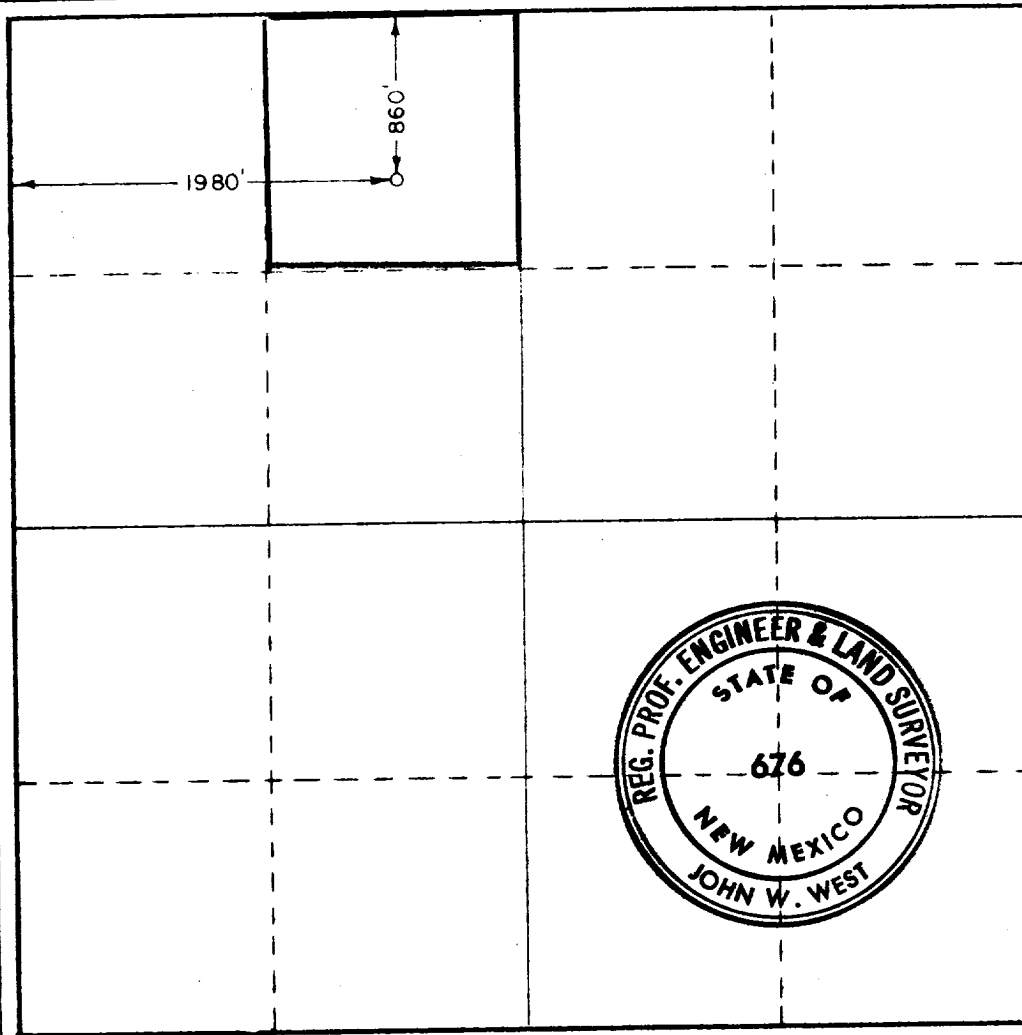
Operator <b>John L. Cox</b>		Lease <b>T P Federal</b>		Well No. <b>2</b>
Unit Letter <b>C</b>	Section <b>27</b>	Township <b>9 South</b>	Range <b>37 East</b>	County <b>Lea</b>
Actual Footage Location of Well: <b>860</b> feet from the <b>North</b> line and <b>1980</b> feet from the <b>West</b> line				
Ground Level Elev. <b>3967.8</b>	Producing Formation <b>San Andres</b>	Pool <b>West Sawyer (San Andres)</b>	Dedicated Acreage: <b>40</b> Acres	

1. Outline the acreage dedicated to the subject well by colored pencil or hachure marks on the plat below.
2. If more than one lease is dedicated to the well, outline each and identify the ownership thereof (both as to working interest and royalty).
3. If more than one lease of different ownership is dedicated to the well, have the interests of all owners been consolidated by communitization, unitization, force-pooling, etc?

☐ Yes ☐ No If answer is "yes," type of consolidation \_\_\_\_\_

If answer is "no," list the owners and tract descriptions which have actually been consolidated. (Use reverse side of this form if necessary.) \_\_\_\_\_

No allowable will be assigned to the well until all interests have been consolidated (by communitization, unitization, forced-pooling, or otherwise) or until a non-standard unit, eliminating such interests, has been approved by the Commission.



CERTIFICATION

I hereby certify that the information contained herein is true and complete to the best of my knowledge and belief.

*Martha Wittenbach*  
Name **Martha Wittenbach**

**Production Clerk**

Position

**John L. Cox**

Company

**August 12, 1974**

Date

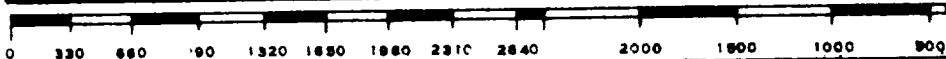
I hereby certify that the well location shown on this plat was plotted from field notes of actual surveys made by me or under my supervision, and that the same is true and correct to the best of my knowledge and belief

Date Surveyed

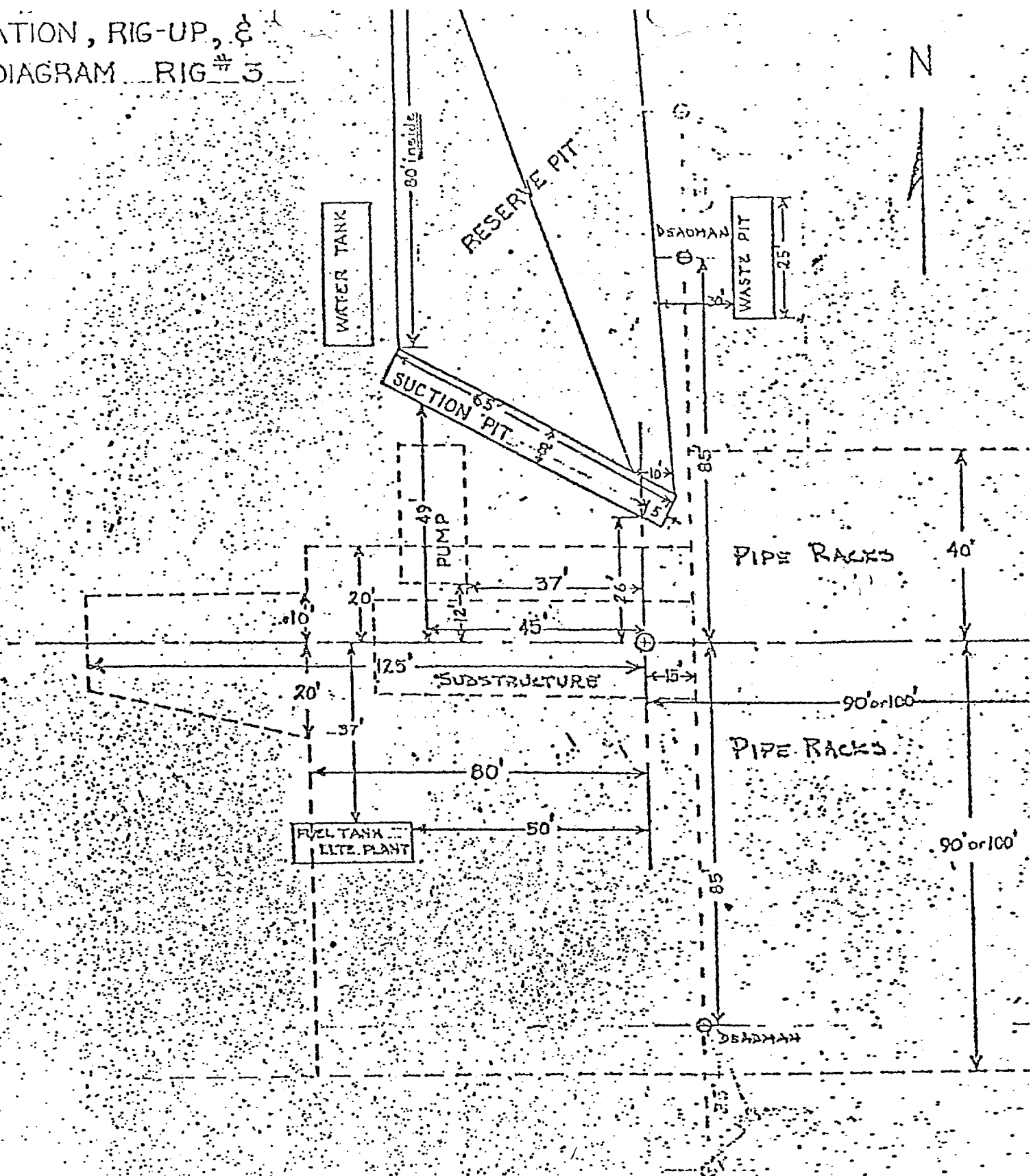
**August 9, 1974**

Registered Professional Engineer and/or Land Surveyor

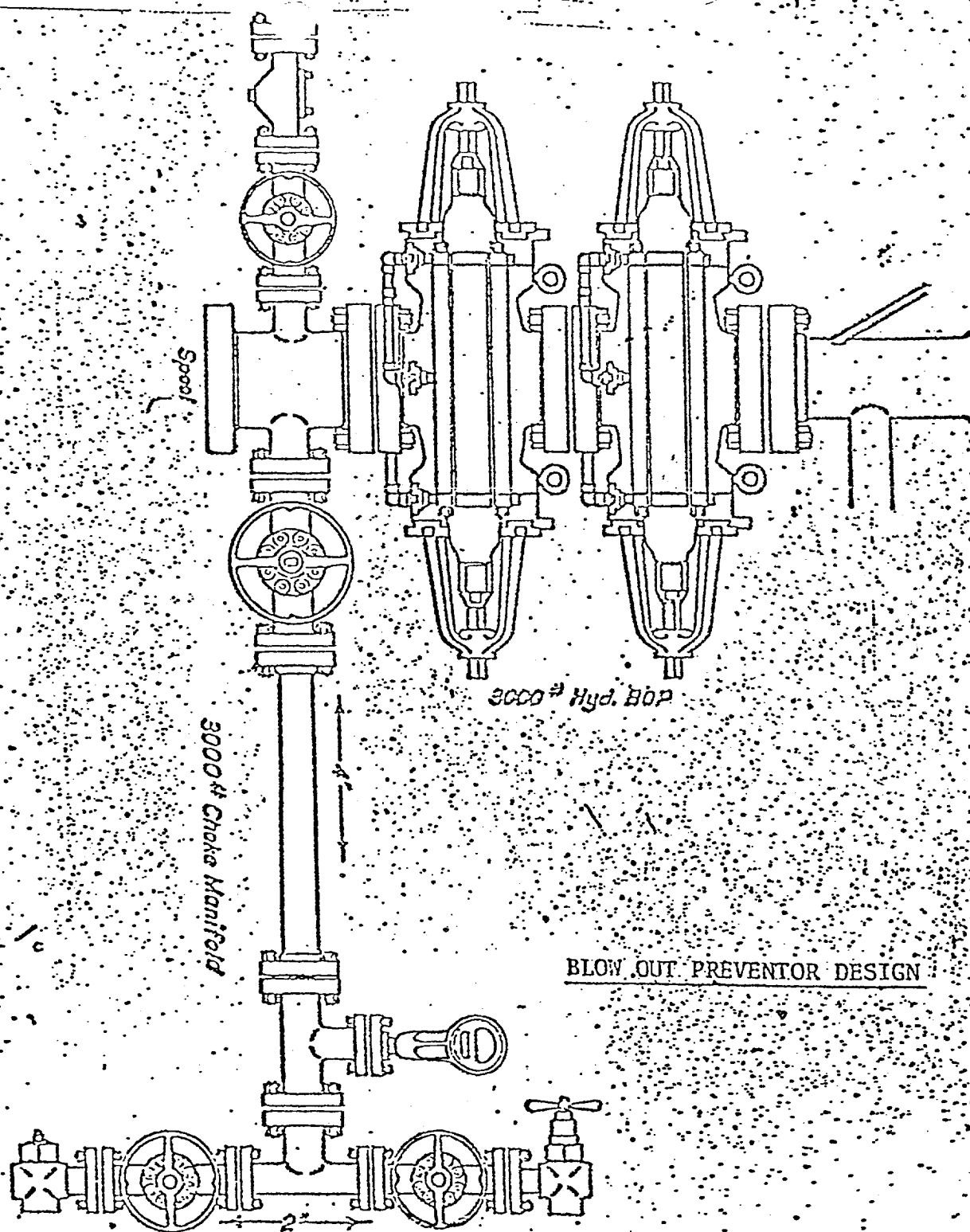
*John W. West*  
Certificate No. **676**



LOCATION, RIG-UP, &  
PIT DIAGRAM RIG #3

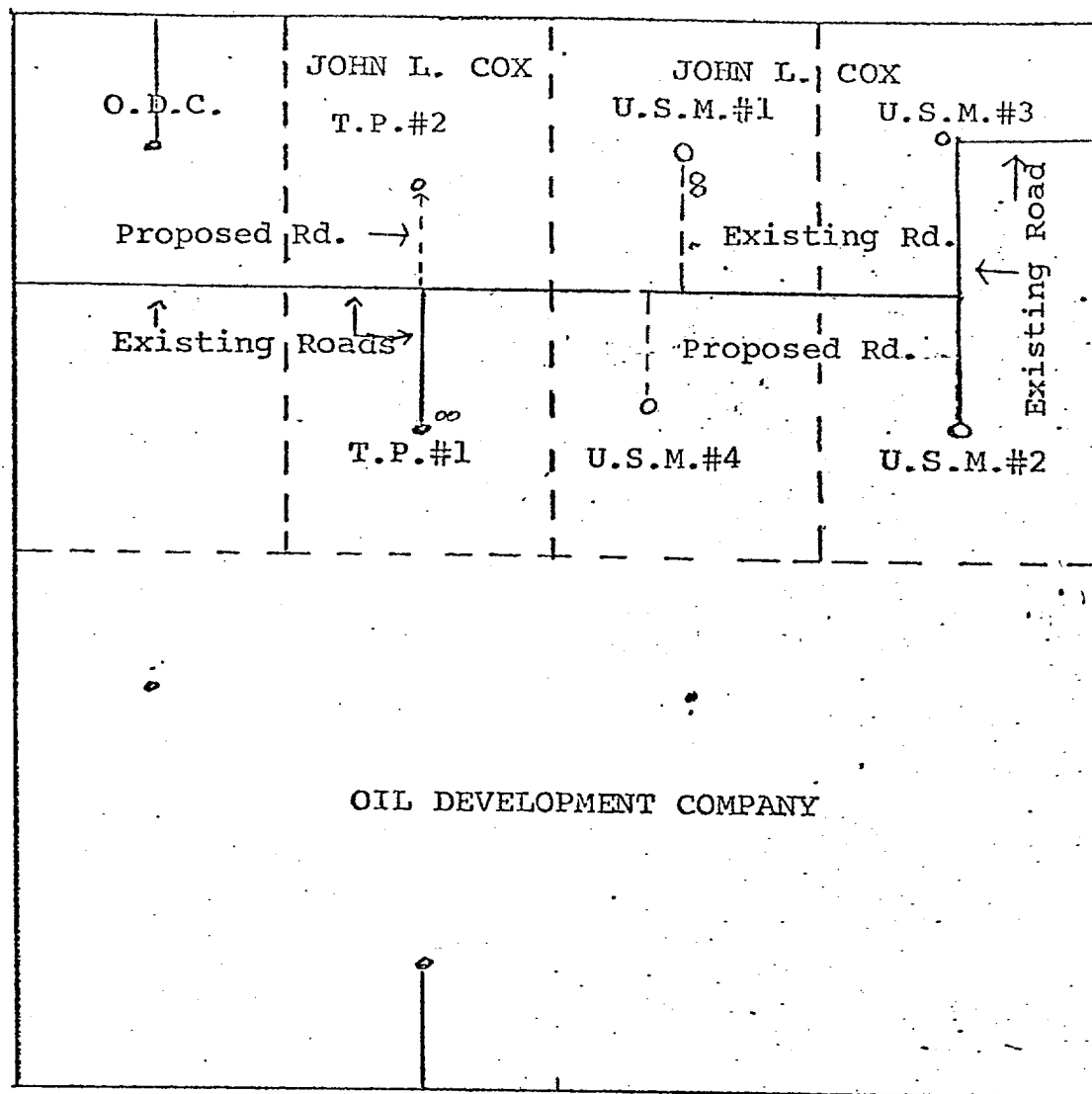


JOHN L. COX - T. P. #2  
Section 27, T-9-S, R-37-E  
Lea County, New Mexico



JOHN L. COX - T. P. #2  
 Section 27, T-9-S, R-37-E  
 Lea County, New Mexico

JOHN L. COX  
 PLAN FOR SURFACE DEVELOPMENT FOR MINERAL USES  
 SECTION 27, T-9-S, R-37-E, LEA COUNTY, NEW MEXICO



00 Proposed tank battery  
 Flow lines to be laid along  
 roads.

All roads to be 12' wide.

John L. Cox - T. P. #2  
 Section 27, T-9-S, R-37E  
 Lea County, New Mexico