

NO. OF COPIES RECEIVED	
DISTRIBUTION	
SANTA FE	
FILE	
U.S.G.S.	
LAND OFFICE	
OPERATOR	

NEW MEXICO OIL CONSERVATION COMMISSION

Form O-101

Revised 1-1-65

5A. Indicate Type of Lease

STATE ☐

FEE ☒

5. State Oil & Gas Lease No.

APPLICATION FOR PERMIT TO DRILL, DEEPEN, OR PLUG BACK

1a. Type of Work		7. Unit Agreement Name	
b. Type of Well DRILL <input checked="" type="checkbox"/> DEEPEN <input type="checkbox"/> PLUG BACK <input type="checkbox"/> OIL WELL <input checked="" type="checkbox"/> GAS WELL <input type="checkbox"/> OTHER <input type="checkbox"/> SINGLE ZONE <input checked="" type="checkbox"/> MULTIPLE ZONE <input type="checkbox"/>		8. Farm or Lease Name Santa Fe	
2. Name of Operator Dalton H. Cobb		9. Well No. 1	
3. Address of Operator 1300 Gihls Tower West Midland, Texas 79701		10. Field and Pool, or Wildcat Wildcat	
4. Location of Well UNIT LETTER P LOCATED 990 FEET FROM THE South LINE AND 990 FEET FROM THE East LINE OF SEC. 20 TWP. 9-S RGE. 36-E NMPM		12. County Lea	
19. Proposed Depth ±12,200'		19A. Formation Devonian	
20. Rotary or C.T. Rotary		21. Elevations (Show whether DF, RT, etc.) N.A.	
21A. Kind & Status Plug. Bond Blanket		21B. Drilling Contractor	
22. Approx. Date Work will start 2-1-75			

23.

PROPOSED CASING AND CEMENT PROGRAM

SIZE OF HOLE	SIZE OF CASING	WEIGHT PER FOOT	SETTING DEPTH	SACKS OF CEMENT	EST. TOP
17 1/2"	13 3/8"	48#	± 400'	400	Circulated
11"	8 5/8"	24-32#	± 4,500'	300	± 3500'
7 7/8"	4 1/2"	11.6#	± 12,200'	300	± 10,000'

Propose to drill a Devonian Wildcat Test using rotary tools to ± 12,200'. Cement will be circulated on the surface casing. Plan to test all significant shows and open hole logs as required to evaluate potential pay zones. Completion or abandonment will be performed in accordance with prudent practices and regulatory body requirements. Will use double ram 900 series BOP from surface casing to total depth.

This application filed to change location.

APPROVAL VALID
FOR 90 DAYS UNLESS
DRILLING COMMENCED,

EXPIRES **5-21-75**

IN ABOVE SPACE DESCRIBE PROPOSED PROGRAM; IF PROPOSAL IS TO DEEPEN OR PLUG BACK, GIVE DATA ON PRESENT PRODUCTIVE ZONE AND PROPOSED NEW PRODUCTIVE ZONE. GIVE BLOWOUT PREVENTER PROGRAM, IF ANY.

I hereby certify that the information above is true and complete to the best of my knowledge and belief.

Signed *K. Blackman* Title Agent Date 2/18/75

(This space for State Use)

APPROVED BY *[Signature]* TITLE SUPERVISOR DATE

CONDITIONS OF APPROVAL, IF ANY

RECEIVED

FEB 21 1975

OIL CONSERVATION COMM.
HOES, N. M.

NEW MEXICO OIL CONSERVATION COMMISSION
WELL LOCATION AND ACREAGE DEDICATION PLAN

Form O-1
Supersedes O-128
1-1-1968

All dedications must be from the pure boundaries of the Section

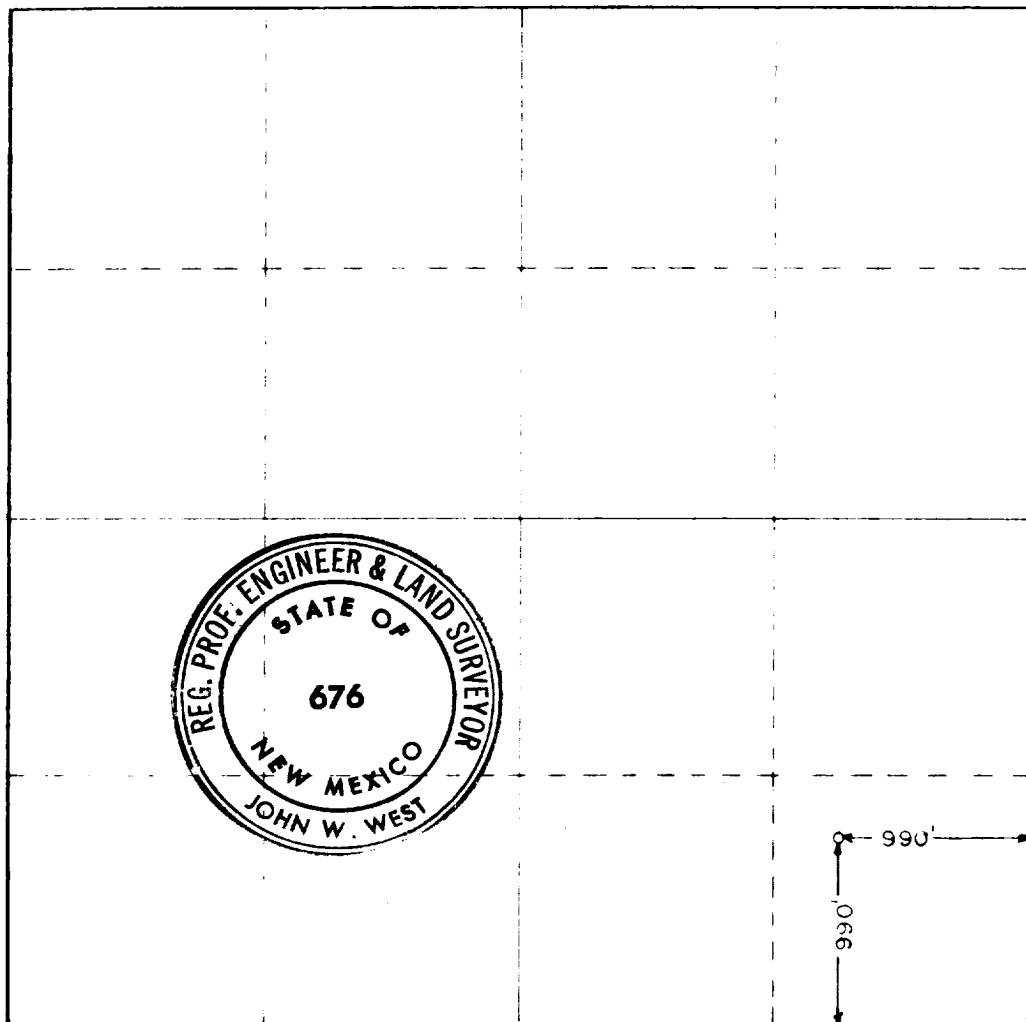
Dalton H. Cobb		Santa Fe No. 1		1
P	20	9 South	36 East	Lea
990	South	990	East	
4057	Devonian	Wildcat	NE 1/4	40

- Outline the acreage dedicated to the subject well by colored pencil or hatchure marks on the plat below.
- If more than one lease is dedicated to the well, outline each and identify the ownership thereof (both as to working interest and royalty).
- If more than one lease of different ownership is dedicated to the well, have the interests of all owners been consolidated by communitization, unitization, force-pooling, etc?

Yes ☐ No ☐ If answer is "yes," type of consolidation _____

If answer is "no," list the owners and tract descriptions which have actually been consolidated (Use reverse side of this form if necessary.) _____

No allowable will be assigned to the well until all interests have been consolidated (by communitization, unitization, forced-pooling, or otherwise) or until a non-standard unit, eliminating such interests, has been approved by the Commission.



CERTIFICATION

I hereby certify that the information contained herein is true and complete to the best of my knowledge and belief.

R. Blackman

Agent

Dalton H. Cobb

February 18, 1975

I hereby certify that the well location shown on this plat was plotted from field notes of actual surveys made by me or under my supervision and that the same is true and correct to the best of my knowledge and belief.

February 15, 1975

Date Surveyed

Registered Professional Engineer and Land Surveyor

John W. West

Certificate No.

676

330 660 990 1320 1650 1980 2310 2640 2970 3300 3630 3960 4290 4620 4950 5280 5610 5940 6270 6600 6930 7260 7590 7920 8250 8580 8910 9240 9570 9900

RECEIVED 17

FEB 2 1975

OIL CONSERVATION COM.
 WOLFE, R. M.