

NEW MEXICO OIL CONSERVATION COMMISSION
WELL LOCATION AND ACREAGE DEDICATION P

Form C-102
Supersedes C-128
Effective 1-1-65

All distances must be from the outer boundaries of the Section

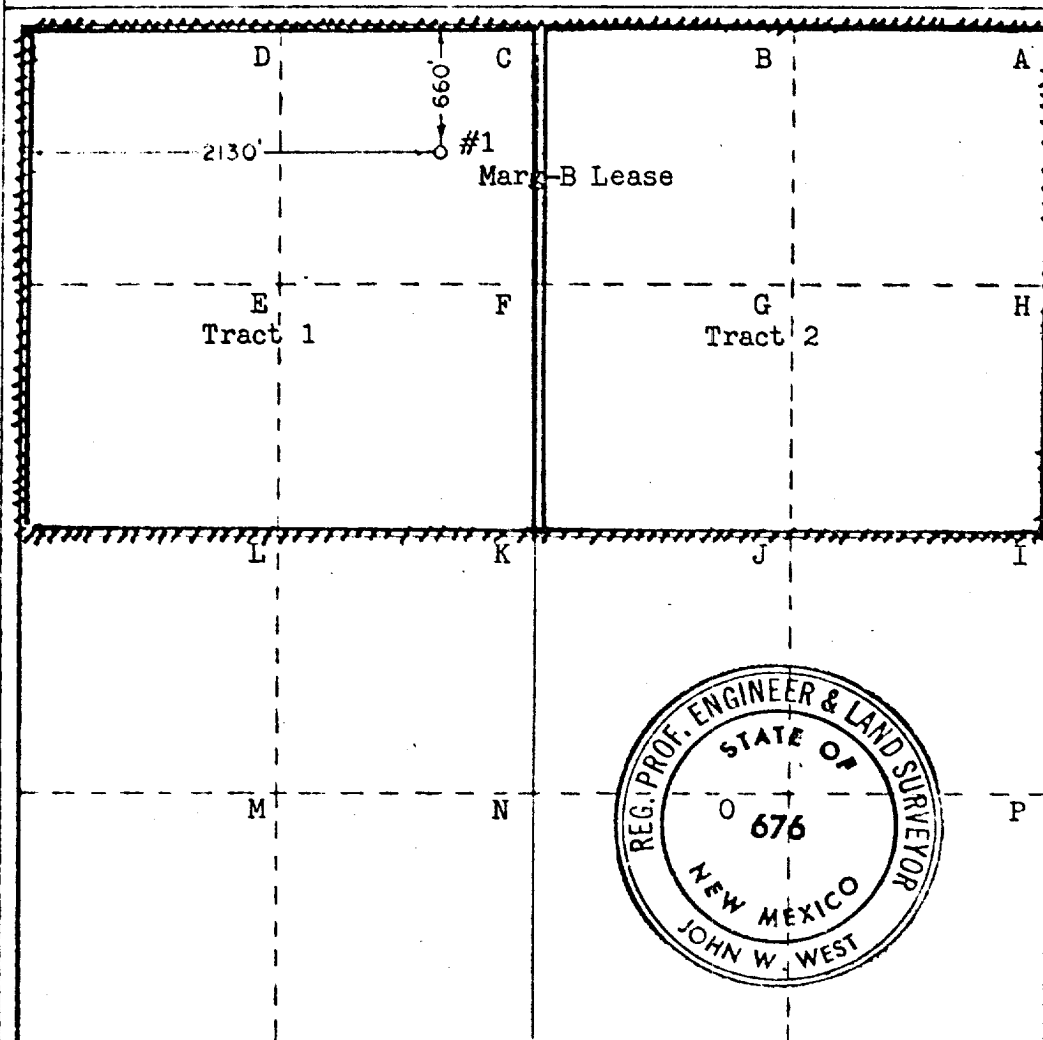
Operator Phillips Petroleum Corporation			Lease Marg "B" "COM"		Well No. 1
Section C	Section 36	Range 9 South	Range 32 East	County Lea	
Actual well location of well:					
660		feet from the North	line and	2130	feet from the West
Ground surface elev. 4267.6	Producing formation Atoka - Gas		Feet Undesignated Atoka Gas	Dedicated Acreage 320	

- Outline the acreage dedicated to the subject well by colored pencil or hatchure marks on the plat below.
- If more than one lease is dedicated to the well, outline each and identify the ownership thereof (both as to working interest and royalty). See reverse side.
- If more than one lease of different ownership is dedicated to the well, have the interests of all owners been consolidated by communitization, unitization, force-pooling, etc?

☒ Yes ☐ No If answer is "yes," type of consolidation Communitization upon

If answer is "no," list the owners and tract descriptions which have actually been consolidated. (Use reverse side of this form if necessary.)

No allowable will be assigned to the well until all interests have been consolidated (by communitization, unitization, forced-pooling, or otherwise) or until a non-standard unit, eliminating such interests, has been approved by the Commission.



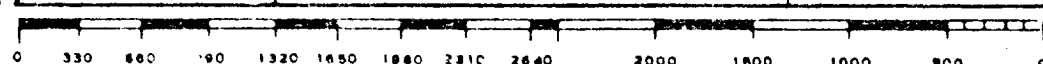
CERTIFICATION

I hereby certify that the information contained herein is true and complete to the best of my knowledge and belief.

Name
W. J. Mueller
Position
Senior Reservoir Engineer
Company
Phillips Petroleum Company
Date
2-11-75

I hereby certify that the well location shown on this plat was plotted from field notes of actual surveys made by me or under my supervision, and that the same is true and correct to the best of my knowledge and belief.

Date Surveyed
February 6, 1975
Registered Professional Engineer and/or Land Surveyor
John W. West
Certificate No.
676



Tract 1 = NW/4 Section 31, T-9-S, R-32-E, Lea County
(State Lease No. L101)

Working Interest = Phillips Petroleum Company, Operator = 93.75%
= 6.25% Texas Crude Oil, Inc.

Royalty Interest = State of New Mexico
or Royalty Interest = Maralo, Inc.

Tract 2 = NE/4 Section 36, T-9-S, R-32-E, Lea County
(State Lease No. L-58)

Working Interest = Southland Royalty Company = 100%

Royalty Interest = State of New Mexico

179