

NEW MEXICO OIL CONSERVATION COMMISSION
WELL LOCATION AND ACREAGE DEDICATION PLAT

Form C-102
 Supersedes C-128
 Effective 1-1-55

All distances must be from the outer boundaries of the Section

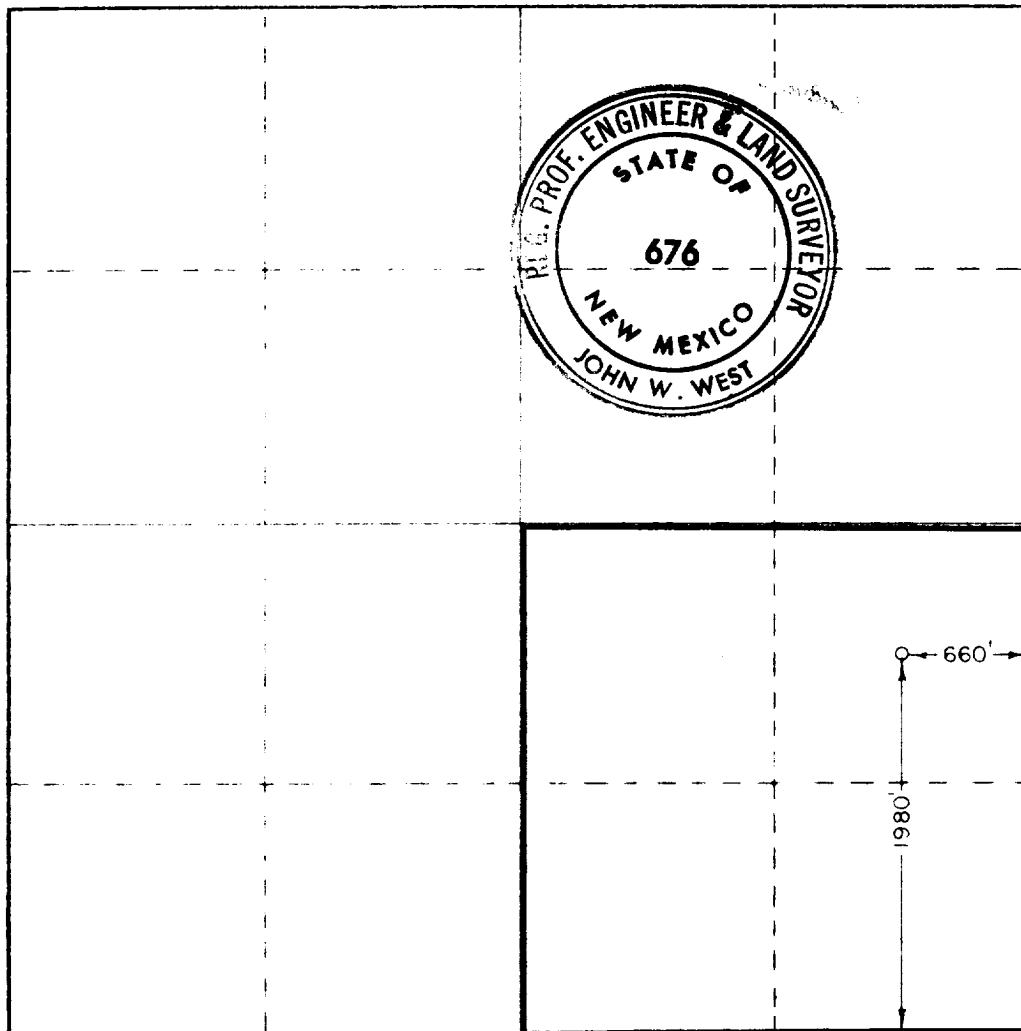
Lessor Hanson Oil Company			Lease Amoco State		Well No. 3
Section 1	Section 10	Township 9 South	Range 33 East	County Lea	
A. True Location of Well: 660 feet from the East line and 1980 feet from the South line					
Ground Level Elev. 4364.4	Producing Formation Bough "C"		Pool Vada Penn		Dedicated Acreage: 160 Acres

1. Outline the acreage dedicated to the subject well by colored pencil or hatchure marks on the plat below.
2. If more than one lease is dedicated to the well, outline each and identify the ownership thereof (both as to working interest and royalty).
3. If more than one lease of different ownership is dedicated to the well, have the interests of all owners been consolidated by communitization, unitization, force-pooling, etc?

☐ Yes ☐ No If answer is "yes," type of consolidation _____

If answer is "no," list the owners and tract descriptions which have actually been consolidated. (Use reverse side of this form if necessary) _____

No allowable will be assigned to the well until all interests have been consolidated (by communitization, unitization, forced-pooling, or otherwise) or until a non-standard unit, eliminating such interests, has been approved by the Commission.



CERTIFICATION

I hereby certify that the information contained herein is true and complete to the best of my knowledge and belief.

Name *Ray Willis*
 Position Vice President/Production
 Company Hanson Oil Corporation
 Date April 25, 1975

I hereby certify that the well location shown on this plat was plotted from field notes of actual surveys made by me or under my supervision, and that the same is true and correct to the best of my knowledge and belief.

Date Surveyed April 21, 1975
 Registered Professional Engineer and/or Land Surveyor

John W. West
 Certificate No. **676**