

**NEW MEXICO OIL CONSERVATION COMMISSION
WELL LOCATION AND ACREAGE DEDICATION**

Form C-102
Supersedes C-128
Effective 1-1-65

All distances must be from the outer boundaries of the Section

Operator PHILLIPS PETROLEUM COMPANY			Lease Marg "C" "COM"		Well No. 1
Unit Letter N	Section 24	Township 9 South	Range 32 East	County Lea	
Actual Footage Location of Well: 660 feet from the South line and 1980 feet from the West line					
Ground Level Elev. Later	Producing Formation Atoka	Pool Undesignated -Atoka- Gas			Dedicated Acreage: 320 Acres

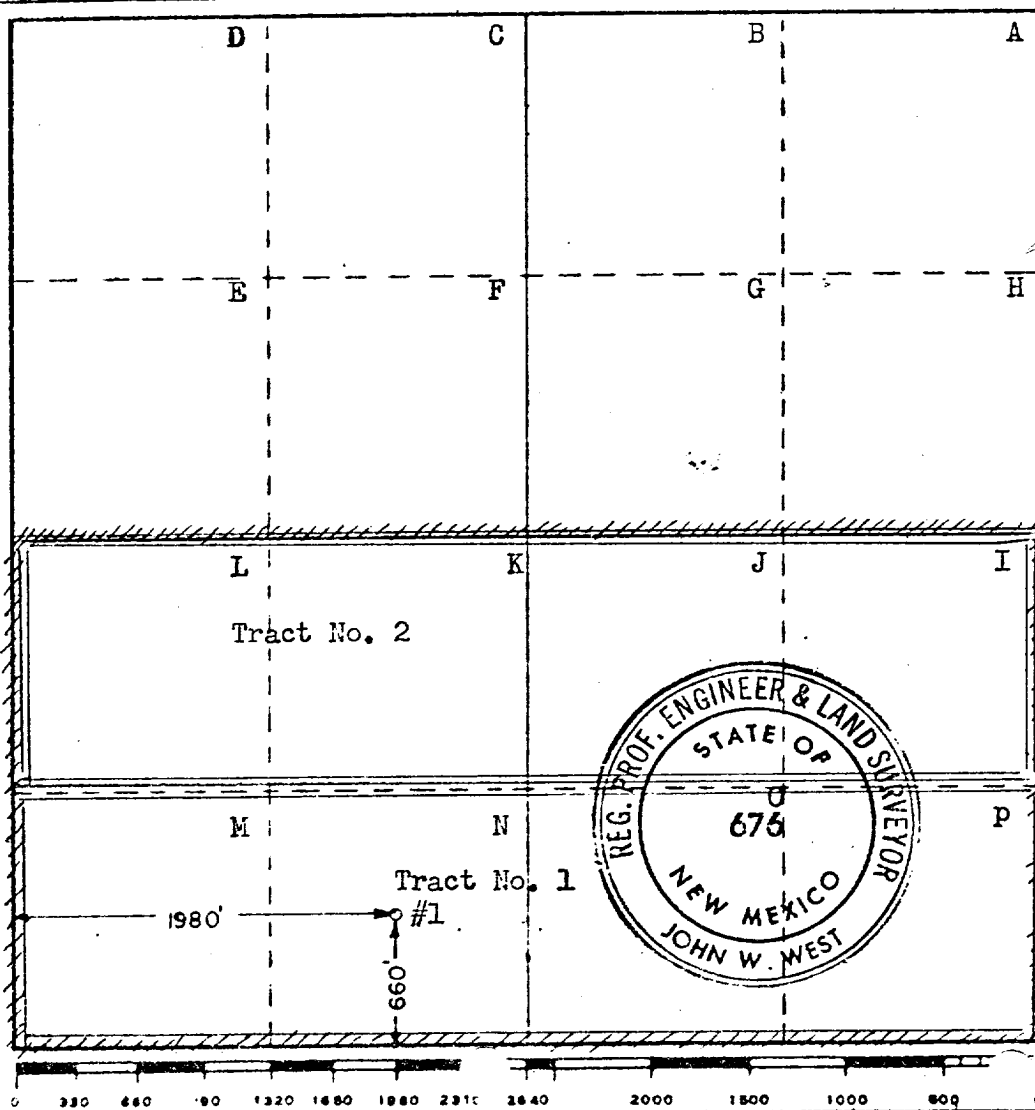
1. Outline the acreage dedicated to the subject well by colored pencil or hatchure marks on the plat below.
2. If more than one lease is dedicated to the well, outline each and identify the ownership thereof (both as to working interest and royalty).

See attached detail
3. If more than one lease of different ownership is dedicated to the well, have the interests of all owners been consolidated by communitization, unitization, force-pooling, etc?

* ☒ Yes ☐ No If answer is "yes," type of consolidation *Communitization upon successful well completion.

If answer is "no," list the owners and tract descriptions which have actually been consolidated. (Use reverse side of this form if necessary.)

No allowable will be assigned to the well until all interests have been consolidated (by communitization, unitization, forced-pooling, or otherwise) or until a non-standard unit, eliminating such interests, has been approved by the Commission.



CERTIFICATION

I hereby certify that the information contained herein is true and complete to the best of my knowledge and belief.

Name
W. J. Mueller
Position
Senior Reservoir Engineer
Company
Phillips Petroleum Company
Date
May 6, 1975

I hereby certify that the well location shown on this plat was plotted from field notes of actual surveys made by me or under my supervision, and that the same is true and correct to the best of my knowledge and belief.

Date Surveyed
May 3, 1975
Registered Professional Engineer and/or Land Surveyor

John W. West
Certificate No. **676**