

UNITED STATES
DEPARTMENT OF THE INTERIOR
GEOLOGICAL SURVEY

APPLICATION FOR PERMIT TO DRILL, DEEPEN, OR PLUG BACK

1a. TYPE OF WORK

DRILL ☒DEEPEN ☐PLUG BACK ☐

b. TYPE OF WELL

OIL
WELL ☒GAS
WELL ☐

OTHER

SINGLE
ZONE ☐MULTIPLE
ZONE ☐

2. NAME OF OPERATOR

Flag-Redfern Oil Company

3. ADDRESS OF OPERATOR

P. O. Box 23, Midland, Texas 79701

4. LOCATION OF WELL (Report location clearly and in accordance with any State requirements.)*

At surface

1980' FWL & 1980' FSL

At proposed prod. zone

Same

14. DISTANCE IN MILES AND DIRECTION FROM NEAREST TOWN OR POST OFFICE*

15 miles east of Crossroads, New Mexico

10. DISTANCE FROM PROPOSED*

LOCATION TO NEAREST
PROPERTY OR LEASE LINE, FT.
(Also to nearest drlg. unit line, if any)

660'

16. NO. OF ACRES IN LEASE

80

17. NO. OF ACRES ASSIGNED
TO THIS WELL

40

18. DISTANCE FROM PROPOSED LOCATION*

TO NEAREST WELL, DRILLING, COMPLETED,
OR APPLIED FOR, ON THIS LEASE, FT.

1214'

19. PROPOSED DEPTH

5100'

20. ROTARY OR CABLE TOOLS

Rotary

21. ELEVATIONS (Show whether DF, RT, GR, etc.)

3975' G.L.

22. APPROX. DATE WORK WILL START*

August 10, 1975

23.

PROPOSED CASING AND CEMENTING PROGRAM

SIZE OF HOLE	SIZE OF CASING	WEIGHT PER FOOT	SETTING DEPTH	QUANTITY OF CEMENT
12-1/4"	8-5/8"	28# J-55	350'	250 sx
7-7/8"	4-1/2"	9.5# K-55	5100'	250 sx

Drill 12-1/4" hole from surface to approximately 350'. Run and set 8-5/8" casing and cement to surface with 250 sacks Class "C" with 2% CaCl. Drill 7-7/8" hole to approximately 5100'. Run open hole logs. Run and set 4-1/2" casing and cement with 250 sacks Class "H" Poz with 2% gel, 0.75% CFR-2, 8 lbs salt per sack. Run correlation logs and perforate San Andres formation. Treat with acid. Swab to test. Potential well.

Mud Program: 0- 375' Native Mud
375-4850' Native Mud and Oil
4850-T.D. Starch, Oil Emulsion

Blowout Preventers: Shaffer 10" - Series 900 - Installed on surface pipe.

IN ABOVE SPACE DESCRIBE PROPOSED PROGRAM: If proposal is to deepen or plug back, give data on present productive zone and proposed new productive zone. If proposal is to drill or deepen directionally, give pertinent data on subsurface locations and measured and true vertical depths. Give blowout preventer program, if any.

24. SIGNED [Signature] TITLE Production Manager DATE July 3, 1975

(This space for Federal or State office use)

PERMIT NO. _____ APPROVAL DATE _____

APPROVED BY _____ TITLE _____ DATE _____

CONDITIONS OF APPROVAL, IF ANY:

NEW CO OIL CONSERVATION COMMISSION
WELL LOCATION AND ACREAGE DEDICATION PLAT

Form C-102
Supersedes C-128
Effective 1-1-65

All distances must be from the outer boundaries of the Section.

Operator Flag-Redfern Oil Company			Lease Yates Federal "69"			Well No. 2
Unit Letter K	Section 23	Township 9S	Range 37E	County Lea		
Actual Footage Location of Well: 1980 feet from the South line and 1980 feet from the West line						
Ground Level Elev. 3975'	Producing Formation San Andres		Pool Sawyer		Dedicated Acreage: 40 Acres	

1. Outline the acreage dedicated to the subject well by colored pencil or hachure marks on the plat below.
2. If more than one lease is dedicated to the well, outline each and identify the ownership thereof (both as to working interest and royalty).
3. If more than one lease of different ownership is dedicated to the well, have the interests of all owners been consolidated by communitization, unitization, force-pooling, etc?

☐ Yes ☐ No If answer is "yes," type of consolidation _____

If answer is "no," list the owners and tract descriptions which have actually been consolidated. (Use reverse side of this form if necessary.) _____

No allowable will be assigned to the well until all interests have been consolidated (by communitization, unitization, forced-pooling, or otherwise) or until a non-standard unit, eliminating such interests, has been approved by the Commission.

				<p align="center">CERTIFICATION</p> <p>I hereby certify that the information contained herein is true and complete to the best of my knowledge and belief.</p>	
				Name <i>[Signature]</i>	
				Position Production Manager	
				Company Flag-Redfern Oil Company	
				Date July 3, 1975	
				<p>I hereby certify that the well location shown on this plat was plotted from field notes of actual surveys made by me or under my supervision, and that the same is true and correct to the best of my knowledge and belief.</p>	
				Date Surveyed July 1, 1975	
				Registered Professional Engineer and/or Land Surveyor <i>[Signature]</i>	
				Certificate No. 754	



Flag-Redfern Oil Company

P. O. BOX 23•MIDLAND, TEXAS 79701•410 WALL TOWERS WEST•PHONE (915) 683-5184

July 3, 1975

FILE:

U. S. Department of Interior
Geological Survey
P. O. Box 1157
Hobbs, New Mexico 88240

Attention: Mr. Arthur Brown

Re: Flag-Redfern Oil Company
Yates Federal "69" No. 2
Section 23, T-9-S, R-37-E
Lea County, New Mexico

Gentlemen:

The following is a Development Plan for Surface Use as required to accompany application to drill the captioned well:

1. State Highway 125 from Tatum, New Mexico to Bledsoe, Texas crosses Section 24 one mile east of the captioned location. Existing caliche lease roads provide access to the center of Section 24.
2. Access road to captioned well will be an extension of the existing lease road, 1200' north to the location.
3. Additional lateral roads in Section 23 will be required if development proceeds in this section.
4. The planned access road will be the only road into this lease.
5. It is anticipated that production from this well will be pumped to the existing tank battery, located west of the No. 1 well.
6. There is no known supply of drilling water in the immediate area, and we consequently plan to haul drilling water into this location.
7. All solid waste from the drilling operation will be either buried or hauled away. Trash and junk will be buried in a separate pit.
8. Produced brine will be stored in tanks and be trucked by permit into an approved subsurface disposal zone.

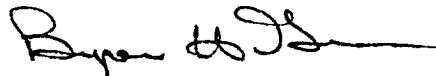
U. S. Department of Interior
July 3, 1975
Page Two

9. Casinghead gas will be contracted to either Warren Petroleum Company or Cities Service Gas Company. Contracts will be requested of these companies immediately upon completion.
10. Location layout and rig plan are detailed on the attached development plat.
11. Should this be a dry hole, the pits will be filled and the surface restored as near as possible to the original contours. Should this well produce, pits will be filled and leveled and the pad maintained during the life of production.

An agreement has been reached with the surface owner for use of the surface in connection with the drilling of this well. No special restoration provisions were included in the agreement.

Please advise if we can furnish any additional information that you might desire.

Yours very truly,

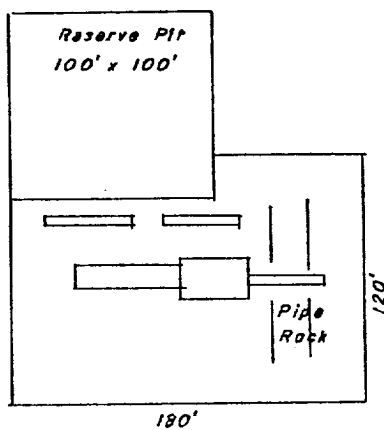
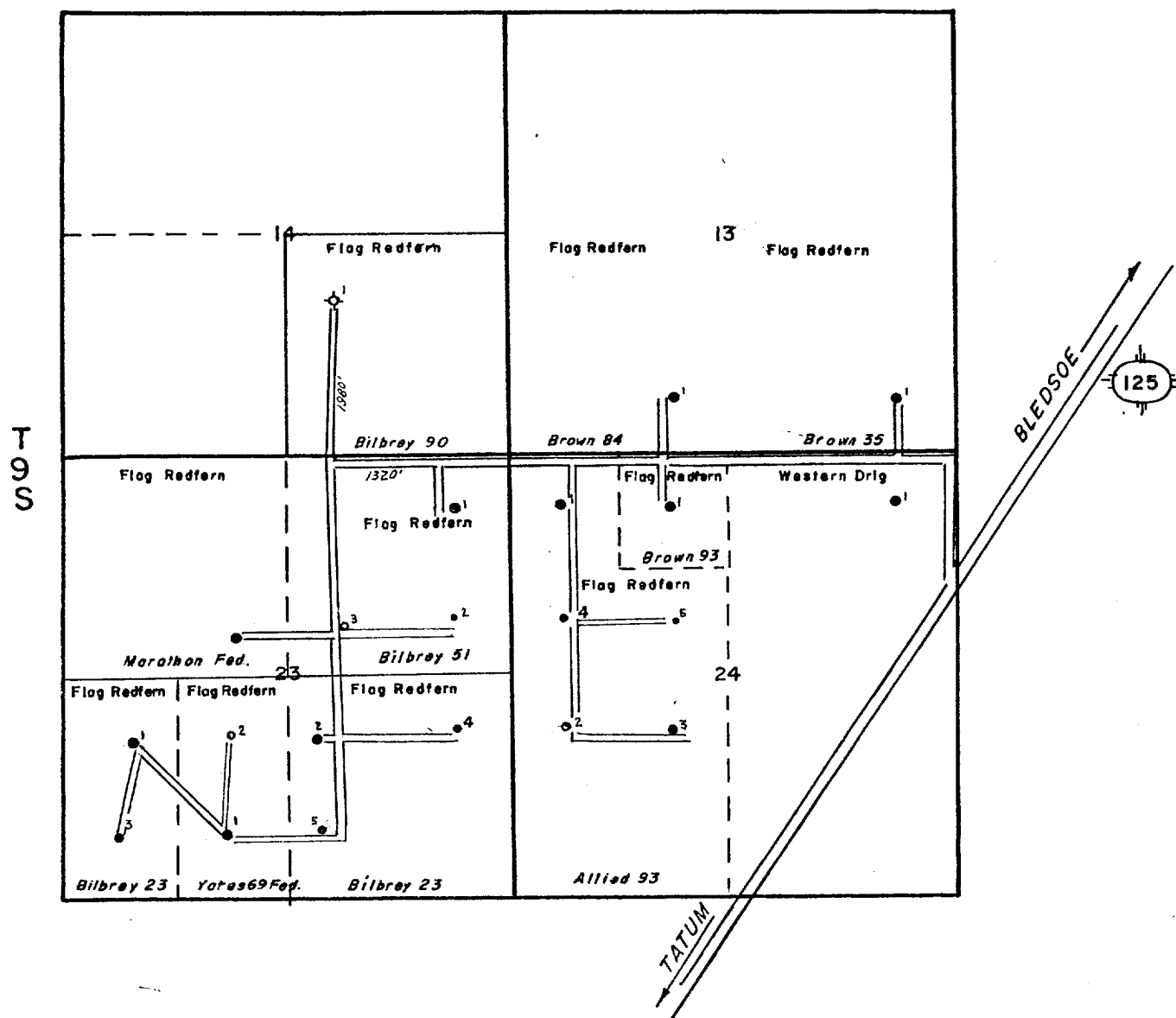


Byron H. Greaves
Production Manager

BHG:ss

Attachments

R-37-E



PAD DETAIL