

NO. OF COPIES RECEIVED	
DISTRIBUTION	
SANTA FE	
FILE	
U.S.G.S.	
LAND OFFICE	
OPERATOR	

# NEW MEXICO OIL CONSERVATION COMMISSION

Form C-101  
Revised 1-1-65

5A. Indicate Type of Lease STATE <input checked="" type="checkbox"/> FEE <input type="checkbox"/>
5. State Oil & Gas Lease No.
7. Unit Agreement Name
8. Farm or Lease Name Hugh 689-C
9. Well No. 5
10. Field and Pool, or Wildcat N. Bagley (Penn)
12. County Lea
19. Proposed Depth 10000'
19A. Formation Pennsylvanian
20. Rotary or C.T. Rotary
21. Elevations (Show whether DT, RT, etc.) 4292' GL
21A. Kind & Status Plug. Bond Blanket on File
21B. Drilling Contractor Hondo Drilling Co.
22. Approx. Date Work will start Upon Approval

## APPLICATION FOR PERMIT TO DRILL, DEEPEN, OR PLUG BACK

1a. Type of Work	DRILL <input checked="" type="checkbox"/>	DEEPEN <input type="checkbox"/>	PLUG BACK <input type="checkbox"/>
b. Type of Well	OIL WELL <input checked="" type="checkbox"/>	GAS WELL <input type="checkbox"/>	OTHER <input type="checkbox"/>
2. Name of Operator	BTA OIL PRODUCERS		
3. Address of Operator	104 South Pecos Midland, Texas 79701		
4. Location of Well	UNIT LETTER "L" LOCATED 510 FEET FROM THE West LINE		
AND 1980 FEET FROM THE South LINE OF SEC. 6 TWP. 12-S RGE. 33-E NMPM			
12. County	Lea		
19. Proposed Depth	10000'		
19A. Formation	Pennsylvanian		
20. Rotary or C.T.	Rotary		
21. Elevations (Show whether DT, RT, etc.)	4292' GL		
21A. Kind & Status Plug. Bond	Blanket on File		
21B. Drilling Contractor	Hondo Drilling Co.		
22. Approx. Date Work will start	Upon Approval		

23.

## PROPOSED CASING AND CEMENT PROGRAM

SIZE OF HOLE	SIZE OF CASING	WEIGHT PER FOOT	SETTING DEPTH	SACKS OF CEMENT	EST. TOP
17 1/2"	12 3/4"	33 & 38#	375'	375	Circ.
12 1/4"	8 5/8"	24 & 32#	4100'	400	
7 7/8"	5 1/2"	23#	10000'	300	

Proposed Blowout Prevention Program: Brand & Type

Double Gate 900 Series 10" Model -B- Shaffer

\*\*\*Cement on the intermediate casing must be brought from the top of the salt or anhydrite to the surface casing. You can do this by either circulating the intermediate casing with cement, or a DV tool at the top of the salt.

APPROVAL VALID  
FOR 90 DAYS UNLESS  
DRILLING COMMENCED,

EXPIRES 3-6-77

IN ABOVE SPACE DESCRIBE PROPOSED PROGRAM: IF PROPOSAL IS TO DEEPEN OR PLUG BACK, GIVE DATA ON PRESENT PRODUCTIVE ZONE AND PROPOSED NEW PRODUCTIVE ZONE. GIVE BLOWOUT PREVENTER PROGRAM, IF ANY.

I hereby certify that the information above is true and complete to the best of my knowledge and belief.

Signed Bob Newland Bob Newland Title Regulatory Supervisor Date 12/3/76

(This space for State Use)

APPROVED BY Jerry Dept TITLE SEE ABOVE DATE DEC 6 1976

CONDITIONS OF APPROVAL, IF ANY:

RECEIVED

DEC 8 1976

OIL POLLUTION COM. A. C. 101  
HOBBS, N. M.

NEW MEXICO OIL CONSERVATION COMMISSION  
WELL LOCATION AND ACREAGE DEDICATION PLAT

Form C-102  
Supersedes C-128  
Effective 1-1-65

All distances must be from the outer boundaries of the Section.

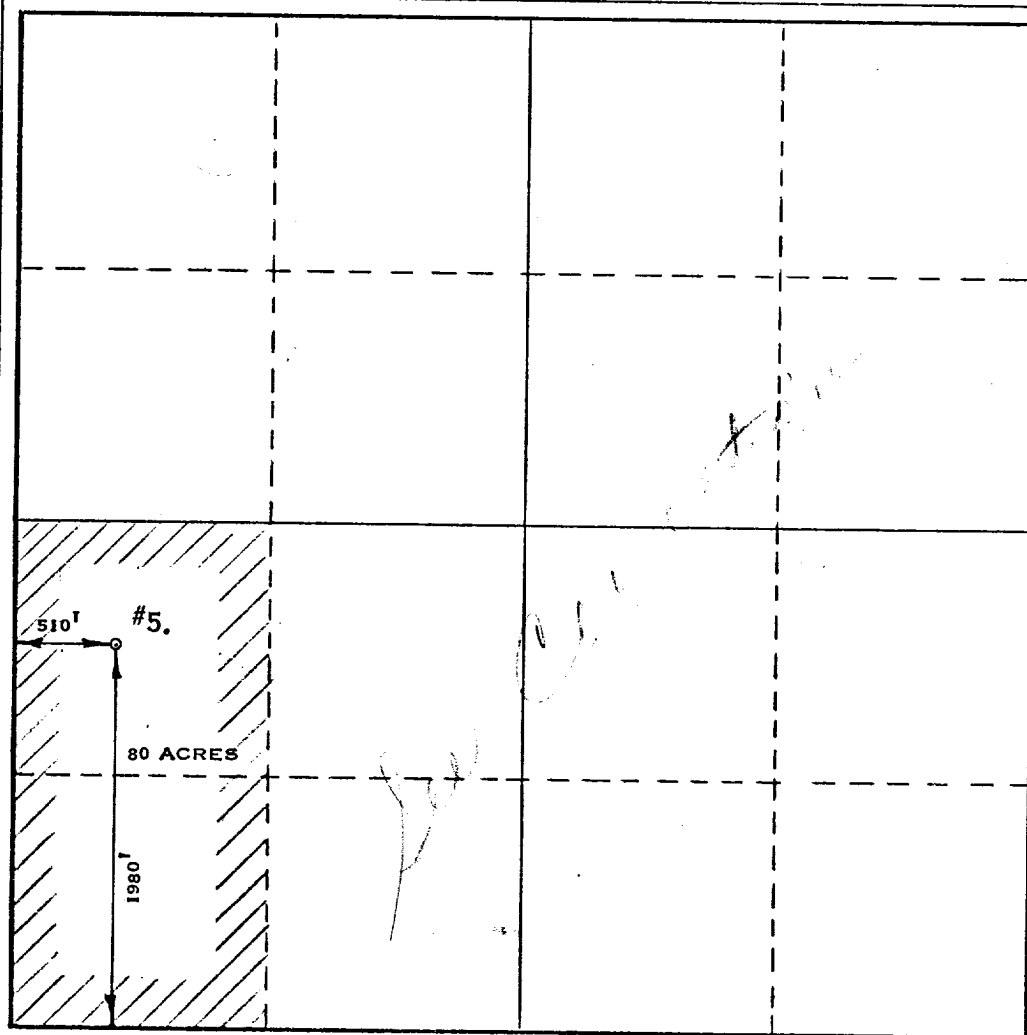
Operator <b>BTA OIL PRODUCERS</b>			Lease <i>241</i> <b>689 - C LTD HUGH</b>		Well No. <b>5</b>
Unit Letter <b>"L"</b>	Section <b>6</b>	Township <b>12 - S</b>	Range <b>33 - E</b>	County <b>LEA</b>	
Actual Footage Location of Well: <b>510</b> feet from the <b>WEST</b> line and <b>1980</b> feet from the <b>SOUTH</b> line					
Ground Level Elev. <b>4291'</b>	Producing Formation <b>PENNSYLVANIAN</b>		Pool <b>BAGLEY, NORTH (PENN)</b>		Dedicated Acreage: <b>80.20</b> Acres

1. Outline the acreage dedicated to the subject well by colored pencil or hachure marks on the plat below.
2. If more than one lease is dedicated to the well, outline each and identify the ownership thereof (both as to working interest and royalty).
3. If more than one lease of different ownership is dedicated to the well, have the interests of all owners been consolidated by communitization, unitization, force-pooling, etc?

☐ Yes ☐ No If answer is "yes," type of consolidation \_\_\_\_\_

If answer is "no," list the owners and tract descriptions which have actually been consolidated. (Use reverse side of this form if necessary.) \_\_\_\_\_

No allowable will be assigned to the well until all interests have been consolidated (by communitization, unitization, forced-pooling, or otherwise) or until a non-standard unit, eliminating such interests, has been approved by the Commission.



CERTIFICATION

I hereby certify that the information contained herein is true and complete to the best of my knowledge and belief.

*Bob Newland*  
Name

**BOB NEWLAND**

Position

**REGULATORY SUPERVISOR**

Company

**BTA OIL PRODUCERS**

Date

**12 / 3 / 76**

I hereby certify that the well location shown on this plat was plotted from field notes of actual surveys made by me or under my supervision, and that the same is true and correct to the best of my knowledge and belief.

Date Surveyed

Registered Professional Engineer  
and ☒ Land Surveyor

*Max A. Schumann, Jr.*  
**MAX A. SCHUMANN, JR.**

Certificate No.

**1510**

RECEIVED

DEC 9 1976

OIL CONSERVATION COMM.  
WASHINGTON, D. C.

173