

NEW MEXICO OIL CONSERVATION COMMISSION
WELL LOCATION AND ACREAGE DEDICATION PLAT

Form C-192
Supersedes C-128
Effective 1-1-65

All distances must be from the outer boundaries of the Section

Operator Charles F. Harding		Lease Phillips State		Well No. 1
Grid Letter J	Section 3	Township 9 South	Range 32 East	County Lea

Actual Well Location of Well:

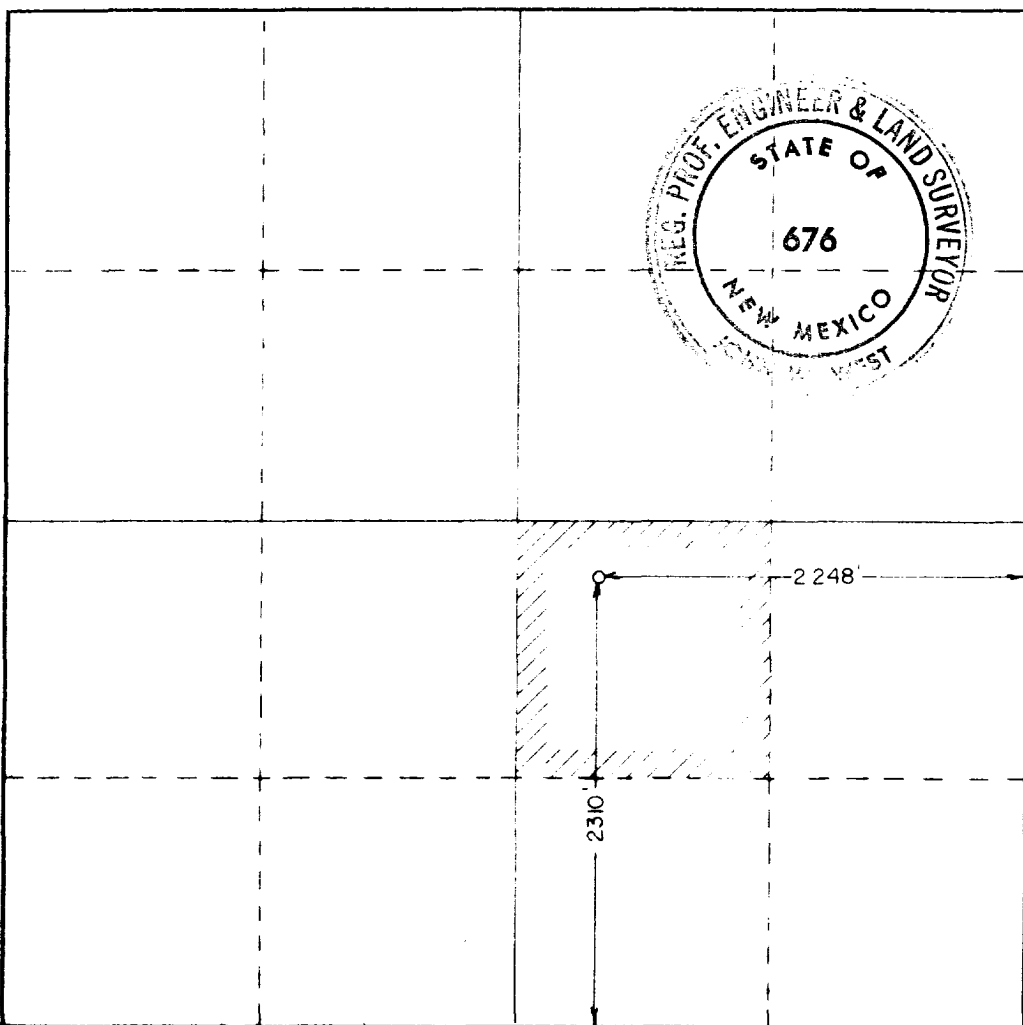
2310	feet from the	South	line and	2248	feet from the	East	line
Ground Level Elev. 4416.1	Producing Formation Devonian		Pool Wildcat		Section Acreage 40		Acreage

1. Outline the acreage dedicated to the subject well by colored pencil or hachure marks on the plat below.
2. If more than one lease is dedicated to the well, outline each and identify the ownership thereof (both as to working interest and royalty).
3. If more than one lease of different ownership is dedicated to the well, have the interests of all owners been consolidated by communitization, unitization, force-pooling, etc?

☒ Yes ☐ No If answer is "yes," type of consolidation _____

If answer is "no," list the owners and tract descriptions which have actually been consolidated. (Use reverse side of this form if necessary.) _____

No allowable will be assigned to the well until all interests have been consolidated (by communitization, unitization, forced-pooling, or otherwise) or until a non-standard unit, eliminating such interests, has been approved by the Commission.



CERTIFICATION

I hereby certify that the information contained herein is true and complete to the best of my knowledge and belief.

John W. West
Agent

Charles F. Harding

Feb. 28, 1978

I hereby certify that the well location shown on this plat was plotted from field notes of actual surveys made by me or under my supervision and that the same is true and correct to the best of my knowledge and belief.

Date Surveyed:

Feb. 23, 1978

Registered Professional Engineer and or Land Surveyor

John W. West
Certificate No. **John W. West 676**
Ronald J. Eidson 3239

RECEIVED

MAR 1 1978

OIL CONSERVATION COMM.
HOBBS, N. M.

173