

NO. OF COPIES RECEIVED	
DISTRIBUTION	
SANTA FE	
FILE	
U.S.G.S.	
LAND OFFICE	
OPERATOR	

NEW MEXICO OIL CONSERVATION COMMISSION

Form C-101
Revised 1-1-65

5A. Indicate Type of Lease STATE <input checked="" type="checkbox"/> FEE <input type="checkbox"/>
5. State Oil & Gas Lease No. LG5343

APPLICATION FOR PERMIT TO DRILL, DEEPEN, OR PLUG BACK

1a. Type of Work DRILL <input checked="" type="checkbox"/> DEEPEN <input type="checkbox"/> PLUG BACK <input type="checkbox"/>		7. Unit Agreement Name
b. Type of Well OIL WELL <input checked="" type="checkbox"/> GAS WELL <input type="checkbox"/> OTHER <input type="checkbox"/> SINGLE ZONE <input checked="" type="checkbox"/> MULTIPLE ZONE <input type="checkbox"/>		8. Farm or Lease Name Mescalero "LB" State
2. Name of Operator Yates Petroleum Corporation		9. Well No. 1
3. Address of Operator 207 S. 4th St. Artesia, NM 88210		10. Field and Pool or Wildcat Unders.
4. Location of Well UNIT LETTER <u>2</u> LOCATED 1980 FEET FROM THE South LINE AND 1980 FEET FROM THE East LINE OF SEC. 30 TWP. 10S RGE. 33E NMPM		12. County Lea
19. Proposed Depth 10400'		19A. Formation Strawn
20. Rotary or C.T. Rotary		
21. Elevations (Show whether DF, RT, etc.) 4220'	21A. Kind & Status Plug. Bond Blanket	21B. Drilling Contractor Forester Drilling Co.
22. Approx. Date Work will start ASAP		

PROPOSED CASING AND CEMENT PROGRAM

SIZE OF HOLE	SIZE OF CASING	WEIGHT PER FOOT	SETTING DEPTH	SACKS OF CEMENT	EST. TOP
17-1/2"	13-3/8"	48# J-55	Approx. 350'	300 sacks	Circulate
12 3/4 or 11"	8-5/8"	24# J-55	Approx. 3750'	1400 sacks	Circulate
7-7/8"	5 1/2"	15.5-17#	Approx. 10400'	250 sacks	

We propose to drill and test the Strawn formation and intermediate zones. Approximately 350' of surface coring will be set, cement will be circulated to shut off gravel and cavings. Intermediate casing will be set approximately 50' into the San Andres and cement circulated. If productive, we will run 5 1/2" casing and cement cover.

Mud Program: FW Gel to 400', Native mud to 3750', water & paper to 8000', starch-driskpak-KCL to 10000', Flosal-driskpak-KCL to TD.

BOP Program: BOP's to be installed on intermediate casing and tested, pipe rams daily.

IN ABOVE SPACE DESCRIBE PROPOSED PROGRAM: IF PROPOSAL IS TO DEEPEN OR PLUG BACK, GIVE DATA ON PRESENT PRODUCTIVE ZONE AND PROPOSED NEW PRODUCTIVE ZONE. GIVE BLOWOUT PREVENTER PROGRAM, IF ANY.

I hereby certify that the information above is true and complete to the best of my knowledge and belief.

Signed Edna L. Hays Title Engineer Date 4-16-78

(This space for State Use)

APPROVED BY [Signature] TITLE SUPERVISOR DISTRICT I DATE APR 23 1979

CONDITIONS OF APPROVAL, IF ANY:

RECEIVED

APR 23 1979

**OIL CONSERVATION COMM.
MOBILE, AL.**

NEW MEXICO OIL CONSERVATION COMMISSION
WELL LOCATION AND ACREAGE DEDICATION PLAT

Form C-102
Supersedes C-128
Effective 1-1-65

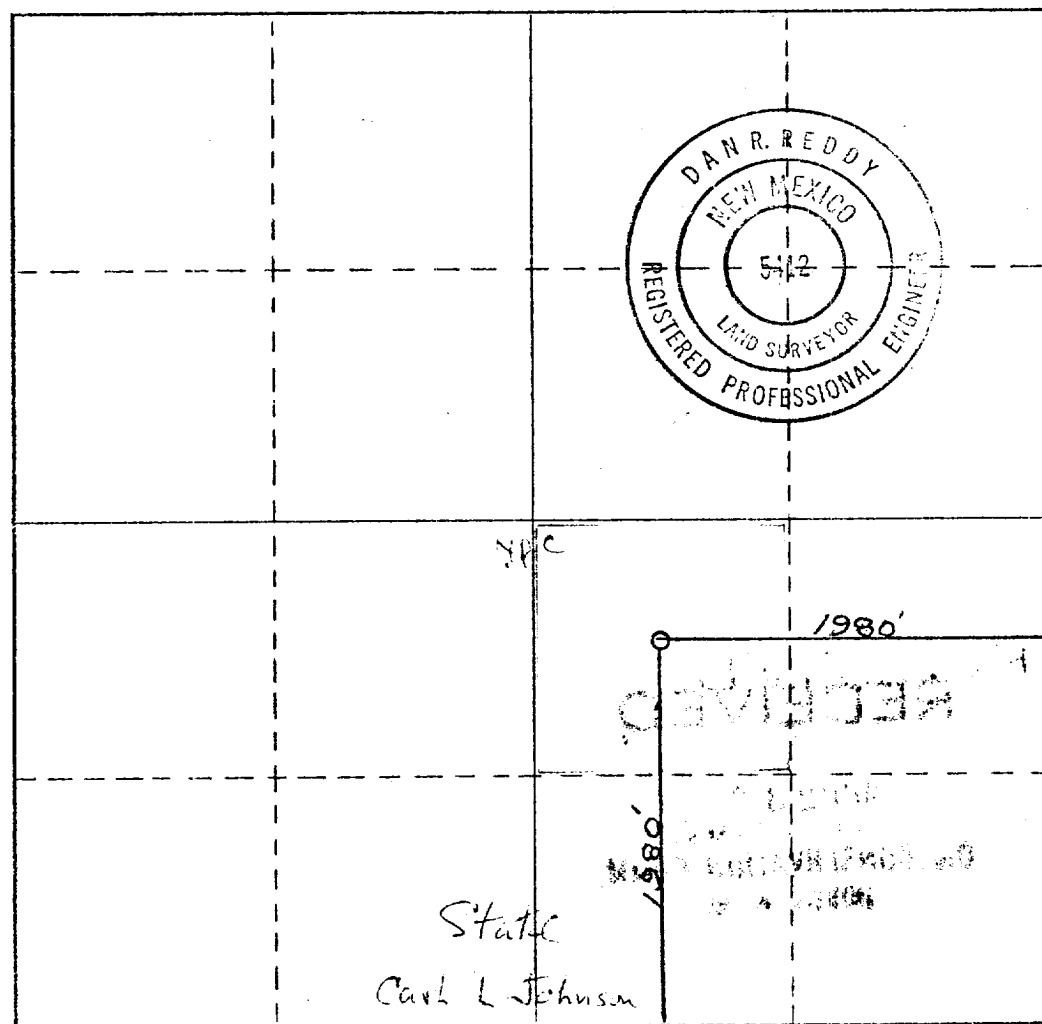
All distances must be from the outer boundaries of the Section.

Operator YATES PETROLEUM CORPORATION		Lease Mescalero LB State		Well No. 1
Unit Letter J	Section 30	Township 10 South	Range 33 East	County Lea
Actual Footage Location of Well:				
1980 feet from the East line and		1980 feet from the South line		
Ground Level Elev. 4220.	Producing Formation STRAW	Pool WILDCAT	Dedicated Acreage: 40 Acres	

1. Outline the acreage dedicated to the subject well by colored pencil or hatchure marks on the plat below.
 2. If more than one lease is dedicated to the well, outline each and identify the ownership thereof (both as to working interest and royalty).
 3. If more than one lease of different ownership is dedicated to the well, have the interests of all owners been consolidated by communitization, unitization, force-pooling, etc?
- ☐ Yes ☐ No If answer is "yes," type of consolidation _____

If answer is "no," list the owners and tract descriptions which have actually been consolidated. (Use reverse side of this form if necessary.) _____

No allowable will be assigned to the well until all interests have been consolidated (by communitization, unitization, forced-pooling, or otherwise) or until a non-standard unit, eliminating such interests, has been approved by the Commission.



CERTIFICATION

I hereby certify that the information contained herein is true and complete to the best of my knowledge and belief.

Eddie M. Mahfood
Name

EDDIE M. MAHFOOD
Position

ENGINEER
Company

YATES PETROLEUM CORP.
Date

4-20-79

I hereby certify that the well location shown on this plat was plotted from field notes of actual surveys made by me or under my supervision, and that the same is true and correct to the best of my knowledge and belief.

Date Surveyed

April 18, 1979

Registered Professional Engineer
and/or Land Surveyor

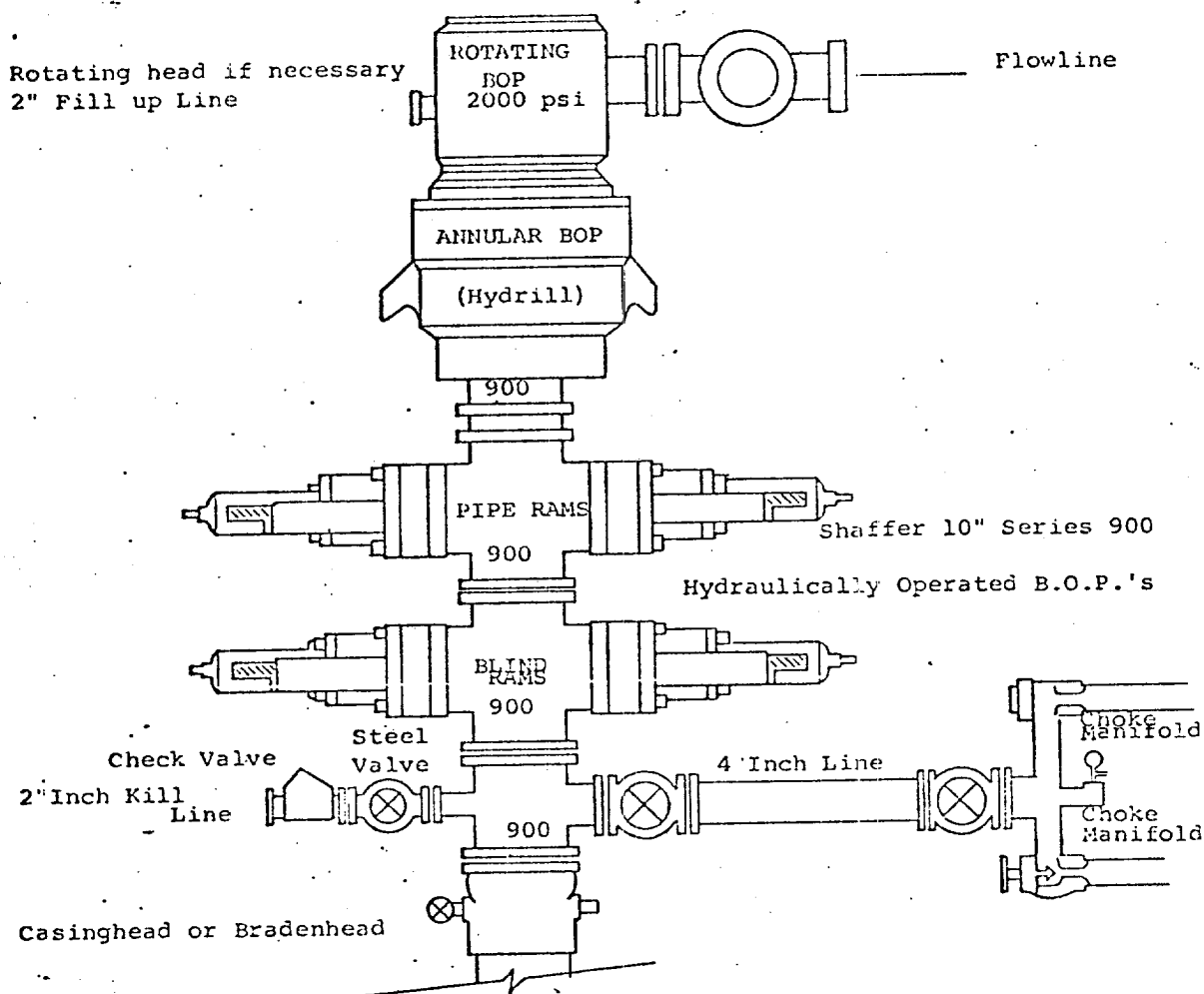
Dan R. Reddy
Signature

NM PE&LS #5412

RECEIVED

APR 23 1979

**OIL CONSERVATION COMM.
MOBILE, AL. 36688**



THE FOLLOWING CONSTITUTE MINIMUM BLOWOUT PREVENTER REQUIREMENTS

1. All preventers to be hydraulically operated with secondary manual controls installed prior to drilling out from under casing.
2. Choke outlet to be a minimum of 4" diameter.
3. Kill line to be of all steel construction of 2" minimum diameter.
4. All connections from operating manifolds to preventers to be all steel. hole or tube a minimum of one inch in diameter.
5. The available closing pressure shall be at least 15% in excess of that required with sufficient volume to operate the B.O.P.'s.
6. All connections to and from preventer to have a pressure rating equivalent to that of the B.O.P.'s.
7. Inside blowout preventer to be available on rig floor.
8. Operating controls located a safe distance from the rig floor.
9. Hole must be kept filled on trips below intermediate casing. Operator not responsible for blowouts resulting from not keeping hole full.
10. D. P. float must be installed and used below zone of first gas intrusion.

RECEIVED

APR 23 1979

**OIL CONSERVATION COMM.
HOBBS, N. M.**

173