

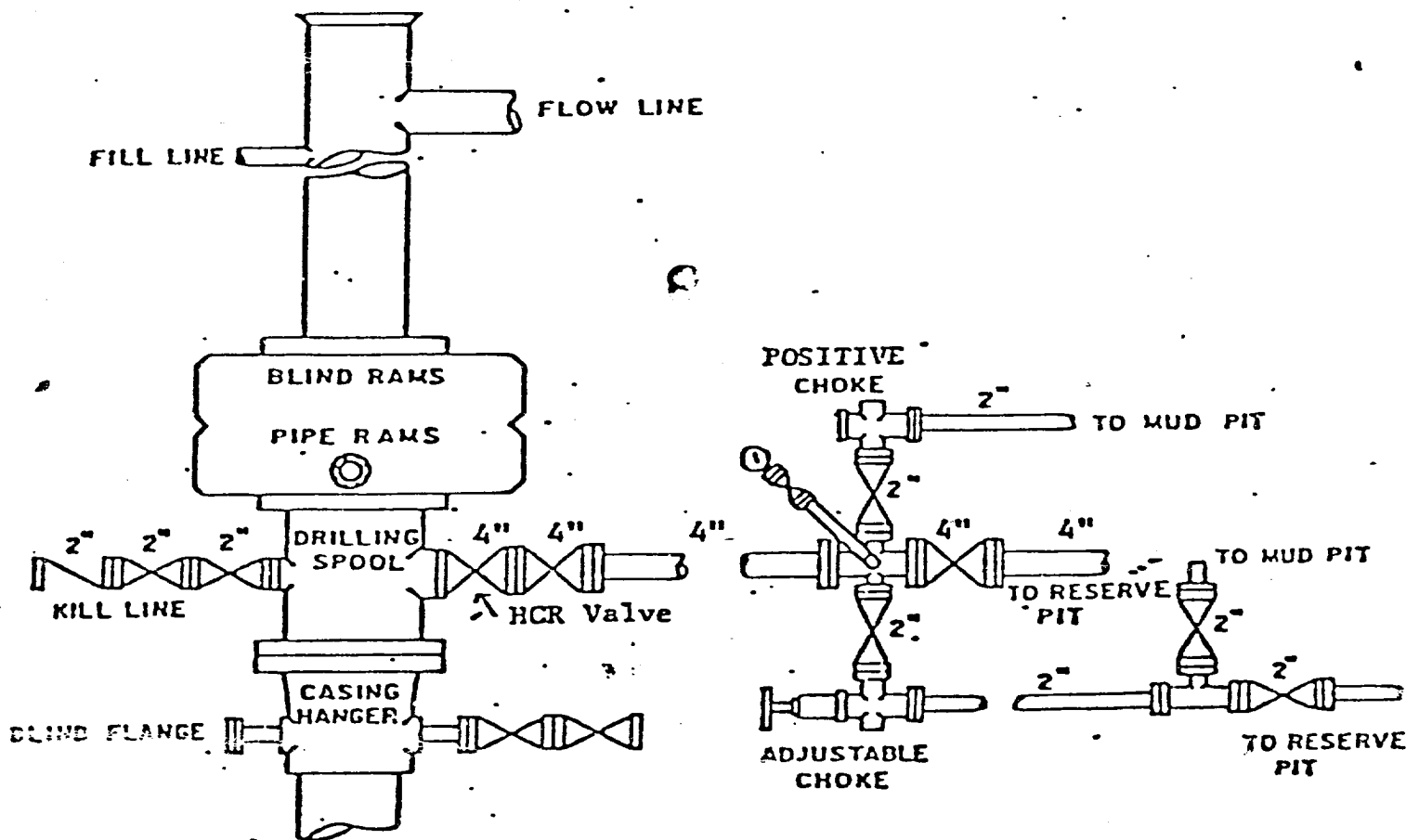
APPROVED BY

1 - 7 station Koomey Accumulator

1 - Koomey Remote Stand

5000 WP Manifold

1 - 10<sup>0</sup> Shaeffer Double BOP 900 Series, 3000 WP



BOP Sketch  
Southern Union Exploration Co.  
Susco State #6  
2120' FNL & 800' FEL  
Sec 19, 9S, 33E  
Lea County, New Mexico