

UNITED STATES
DEPARTMENT OF THE INTERIOR
GEOLOGICAL SURVEY

LC 063623-A

5. LEASE DESIGNATION AND SERIAL NO.

S NM 792

6. IF INDIAN, ALLOTTEE OR TRIBE NAME

7. UNIT AGREEMENT NAME

8. FARM OR LEASE NAME

Dome-Wickson, et al Federal

9. WELL NO.

1

10. FIELD AND POOL, OR WILDCAT

Wildcat

11. SEC., T., R., M., OR BLK.
AND SURVEY OR AREA

Sec. 5, T-10-S, R-38-E

12. COUNTY OR PARISH

Lea

13. STATE
New Mexico

1a. TYPE OF WORK

DRILL ☒DEEPEN ☐PLUG BACK ☐

b. TYPE OF WELL

OIL
WELL ☒GAS
WELL ☐

OTHER

SINGLE
ZONE ☒MULTIPLE
ZONE ☐

2. NAME OF OPERATOR

Dome Petroleum Corporation

Oils, Inc.

3. ADDRESS OF OPERATOR

One Marienfeld Place, Suite 290, Midland, Texas 79701

4. LOCATION OF WELL (Report location clearly and in accordance with any State requirements.)*

At surface

Unit "O", 660' FSL, 1980' FEL

At proposed prod. zone

Unit "O", 660' FSL, 1980' FEL

14. DISTANCE IN MILES AND DIRECTION FROM NEAREST TOWN OR POST OFFICE*

15 miles East & then 15 miles North from Tatum, New Mexico

15. DISTANCE FROM PROPOSED*

LOCATION TO NEAREST
PROPERTY OR LEASE LINE, FT.
(Also to nearest drlg. unit line, if any)

660'

16. NO. OF ACRES IN LEASE

1142.41

17. NO. OF ACRES ASSIGNED
TO THIS WELL

40

18. DISTANCE FROM PROPOSED LOCATION*
TO NEAREST WELL, DRILLING, COMPLETED,
OR APPLIED FOR, ON THIS LEASE, FT.

None

19. PROPOSED DEPTH

5,300'

20. ROTARY OR CABLE TOOLS

Rotary

21. ELEVATIONS (Show whether DF, RT, GR, etc.)

3920.3' GR

22. APPROX. DATE WORK WILL START*

August 1, 1980

23. PROPOSED CASING AND CEMENTING PROGRAM

SIZE OF HOLE	SIZE OF CASING	WEIGHT PER FOOT	SETTING DEPTH	QUANTITY OF CEMENT
11"	8 5/8"	24#	400'	200 sks.
7 7/8"	4 1/2"	10.5#	5300'	300 sks.

Propose to drill San Andres well using Rotary Tools to a depth of 5300'. Cement will be circulated to surface on 8 5/8" casing string. Plan to test significant shows and evaluate with adequate logging program. Completion or abandonment will be performed in accordance with prudent practices and regulatory body requirements. A double ram Series 900 BOP and choke manifold will be used from 8 5/8" casing to total depth.

See attached BOP sketch.

RECEIVED

JUN 12 1980

U. S. GEOLOGICAL SURVEY
HOBBS, NEW MEXICO

IN ABOVE SPACE DESCRIBE PROPOSED PROGRAM: If proposal is to deepen or plug back, give data on present productive zone and proposed new productive zone. If proposal is to drill or deepen directionally, give pertinent data on subsurface locations and measured and true vertical depths. Give blowout preventer program, if any.

24.

SIGNED

TITLE

Agent

DATE

6-4-80

(This space for Federal or State office use)

PERMIT NO.

APPROVAL DATE

APPROVED BY

APPROVED

TITLE

DATE

CONDITIONS OF APPROVAL, IF ANY:

JUN 27 1980

for DISTRICT SUPERVISOR

*See Instructions On Reverse Side

N. MEXICO OIL CONSERVATION COMMISS
WELL LOCATION AND ACREAGE DEDICATION PLAT

Form C-132
 Supersedes C-128
 Effective 1-1-65

All distances must be from the outer boundaries of the Section.

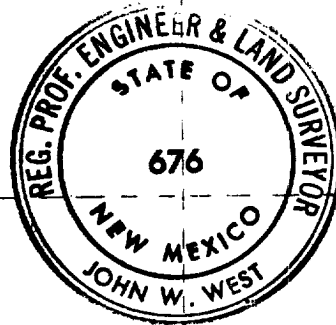
Operator Dome Petroleum Corp.			Lease Dome-Wickson, etal Federal 8		Well No. 1
Tract Number 0	Section 5	Township 10 South	Range 38 East	County Lea	
Actual Surface Location of Well: 660 feet from the South line and 1980 feet from the East line					
Ground Level Elev. 3920.3	Producing Formation San Andres		Pool Wildcat		Dedicated Acreage 40 Acres

1. Outline the acreage dedicated to the subject well by colored pencil or hachure marks on the plat below.
2. If more than one lease is dedicated to the well, outline each and identify the ownership thereof (both as to working interest and royalty).
3. If more than one lease of different ownership is dedicated to the well, have the interests of all owners been consolidated by communitization, unitization, force-pooling, etc?

☐ Yes ☐ No If answer is "yes," type of consolidation _____

If answer is "no," list the owners and tract descriptions which have actually been consolidated. (Use reverse side of this form if necessary.) _____

No allowable will be assigned to the well until all interests have been consolidated (by communitization, unitization, forced-pooling, or otherwise) or until a non-standard unit, eliminating such interests, has been approved by the Commission.



CERTIFICATION

I hereby certify that the information contained herein is true and complete to the best of my knowledge and belief.

O. H. Routh

Name
O. H. Routh

Position
Agent

Company
Dome Petroleum Corp.

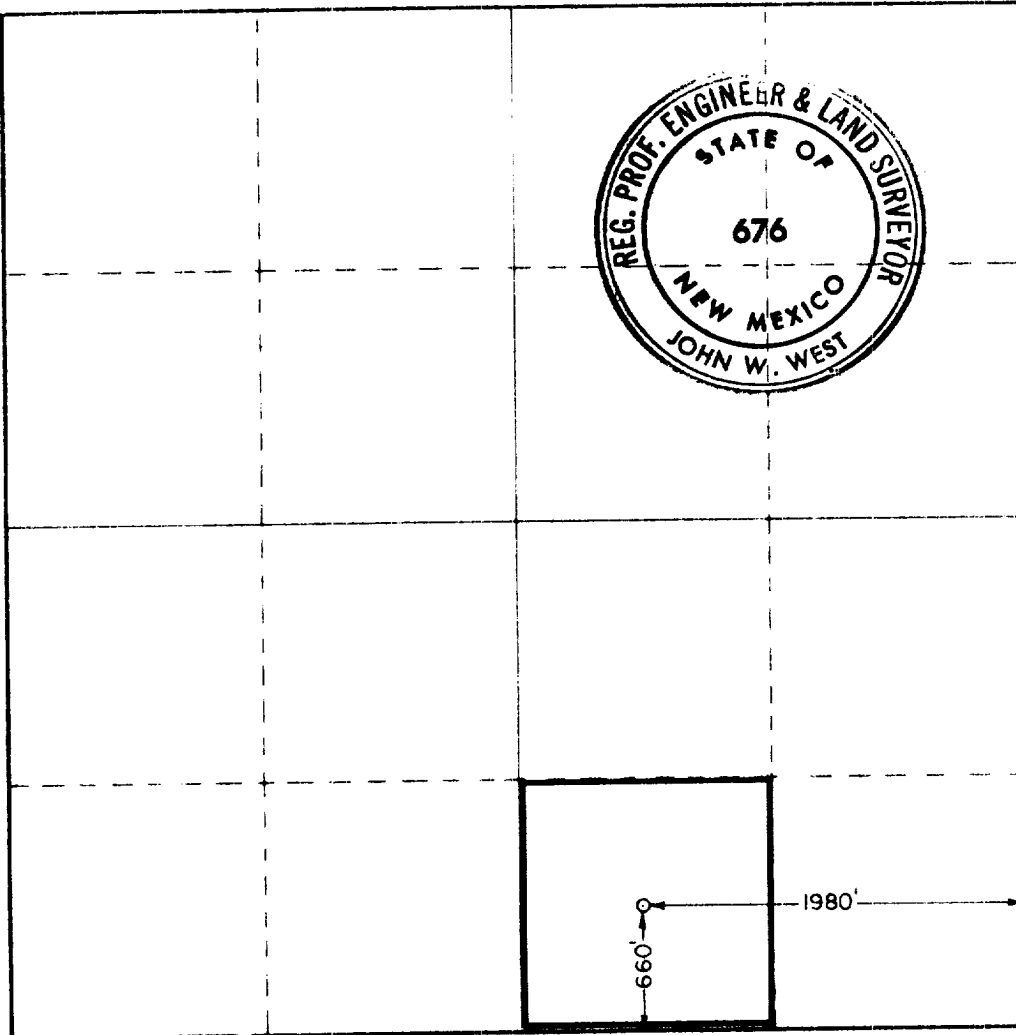
Date
6-4-80

I hereby certify that the well location shown on this plat was plotted from field notes of actual surveys made by me or under my supervision, and that the same is true and correct to the best of my knowledge and belief.

Date Surveyed
April 30, 1980

Registered Professional Engineer and/or Land Surveyor

John W. West
 Certificate No. **JOHN W. WEST 676**
PATRICK A. ROMERO 6688
Ronald J. Eidson 3239



1 - 7 station Koomey Accumulator

1 - Koomey Remote Stand

5000 WP Manifold

1 - 10° Shaeffer Double BOP 900 Series, 3000 WP

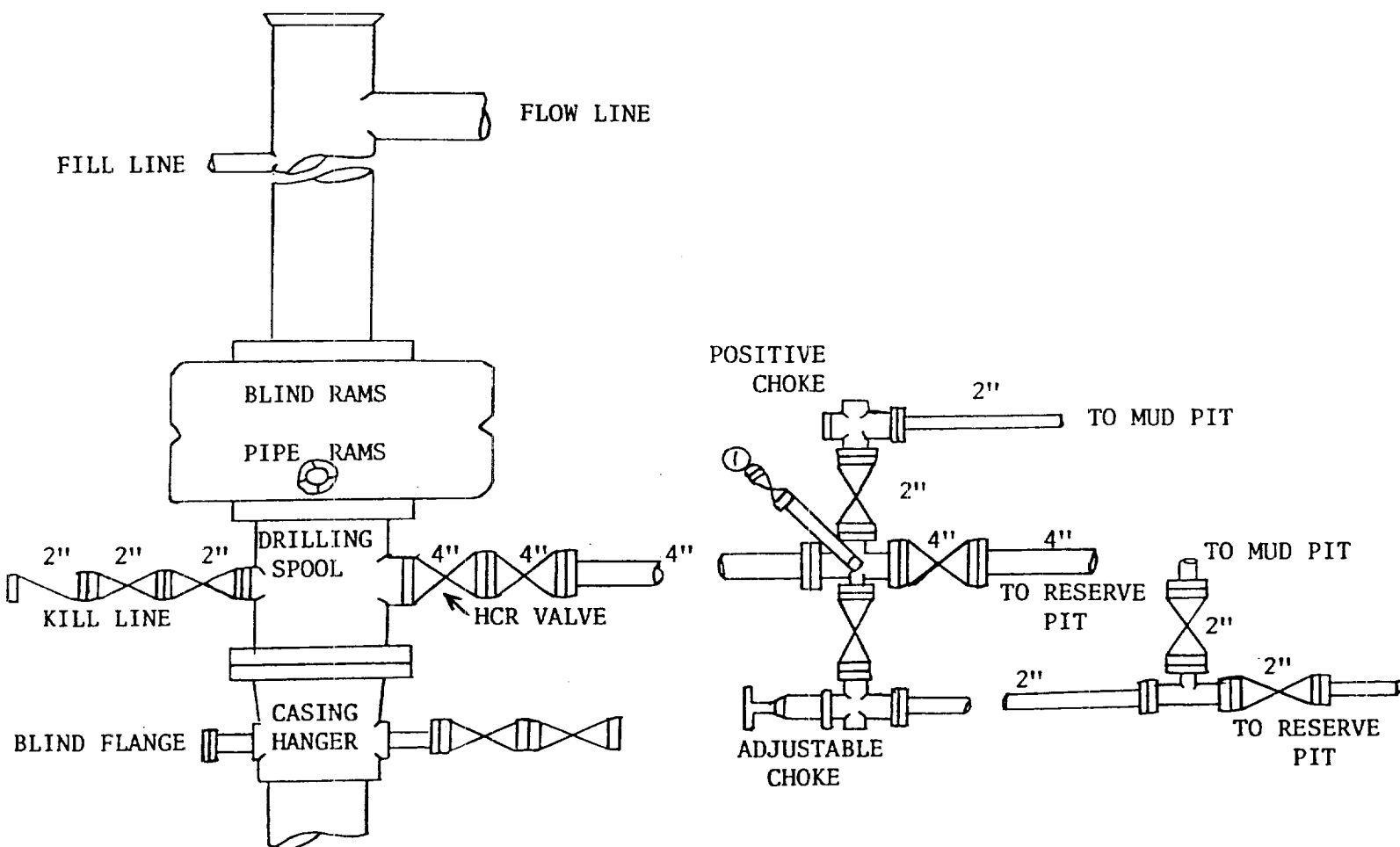


EXHIBIT "D"

BOP SKETCH

DOME PETROLEUM CORPORATION
DOME-WICKSON et al, FEDERAL 5
WELL NO. 1
LEA COUNTY, NEW MEXICO

6-4-80

OHR

RECEIVED

JUL 1 1980

OIL CONSERVATION DIV.

Received
by [signature]