

# DEPARTMENT OF THE INTERIOR

GEOLOGICAL SURVEY

COPY TO C. C. C.

## APPLICATION FOR PERMIT TO DRILL, DEEPEN, OR PLUG BACK

1a. TYPE OF WORK

DRILL ☒

DEEPEN ☐

PLUG BACK ☐

b. TYPE OF WELL

OIL WELL ☒

GAS WELL ☐

OTHER ☐

SINGLE ZONE ☐

MULTIPLE ZONE ☐

2. NAME OF OPERATOR

Coastal Oil and Gas Corporation

3. ADDRESS OF OPERATOR

P. O. Box 235 Midland, Texas 79702

4. LOCATION OF WELL (Report location clearly and in accordance with any State requirements.)\*

At surface

1980' FNL & 1980' FEL, Sec. 31, T-9-S, R-33E

At proposed prod. zone

14. DISTANCE IN MILES AND DIRECTION FROM NEAREST TOWN OR POST OFFICE\*

15 miles West of crossroads

10. DISTANCE FROM PROPOSED\*

LOCATION TO NEAREST PROPERTY OR LEASE LINE, FT. (Also to nearest drlg. unit line, if any)

1980'

18. DISTANCE FROM PROPOSED LOCATION\*

TO NEAREST WELL, DRILLING, COMPLETED, OR APPLIED FOR, ON THIS LEASE, FT.

1120'

16. NO. OF ACRES IN LEASE

320

19. PROPOSED DEPTH

4600

17. NO. OF ACRES ASSIGNED TO THIS WELL

80

20. ROTARY OR CABLE TOOLS

Rotary

21. ELEVATIONS (Show whether DF, RT, GR, etc.)

4257.6 GR

22. APPROX. DATE WORK WILL START\*

23.

### PROPOSED CASING AND CEMENTING PROGRAM

SIZE OF HOLE	SIZE OF CASING	WEIGHT PER FOOT	SETTING DEPTH	QUANTITY OF CEMENT
12 1/4	8 5/8	24	1700	873 sxs - to circulate *
7 7/8	5 1/2	15.5	4600	532 sxs **

\* 673 sxs Cl "C", 4% Gel, 2% CaCl<sub>2</sub> (100% excess) tail-in 200 sxs Cl "C", 2% CaCl<sub>2</sub> (100% excess).

\*\* 50/50 Poz (Cl "C") 2% gel, 2% CaCl<sub>2</sub>, 1/4#/sx Flocele. Tie-in with shoe of 8 5/8" casing.

### Circulating Medium (Drilling Fluid)

0' to 1700' - Fresh water with Gel and lime for hole control.

1700' - 4600' - Salt base, starch mud - 9.8 - 10.2 #/gal.

IN ABOVE SPACE DESCRIBE PROPOSED PROGRAM: If proposal is to deepen or plug back, give data on present productive zone and proposed new productive zone. If proposal is to drill or deepen directionally, give pertinent data on subsurface locations and measured and true vertical depths. Give blowout preventer program, if any.

24.

SIGNED

*See W. Dwyer*

TITLE Sr. Drilling Engineer

DATE

6-25-80

(This space for Federal or State office use)

PERMIT NO.

APPROVAL DATE

APPROVED BY

TITLE

DATE

CONDITIONS OF APPROVAL, IF ANY:

APPROVED

JUL 11 1980

DISTRICT SUPERVISOR

\*See Instructions On Reverse Side

RECEIVED  
JUN 26 1980  
U. S. GEOLOGICAL SURVEY  
HOBBS, NEW MEXICO

NEW MEXICO OIL CONSERVATION COMMISSION  
WELL LOCATION AND ACREAGE DEDICATION - LAT

Form C-102  
Supersedes C-128  
Effective 1-1-65

All distances must be from the outer boundaries of the Section

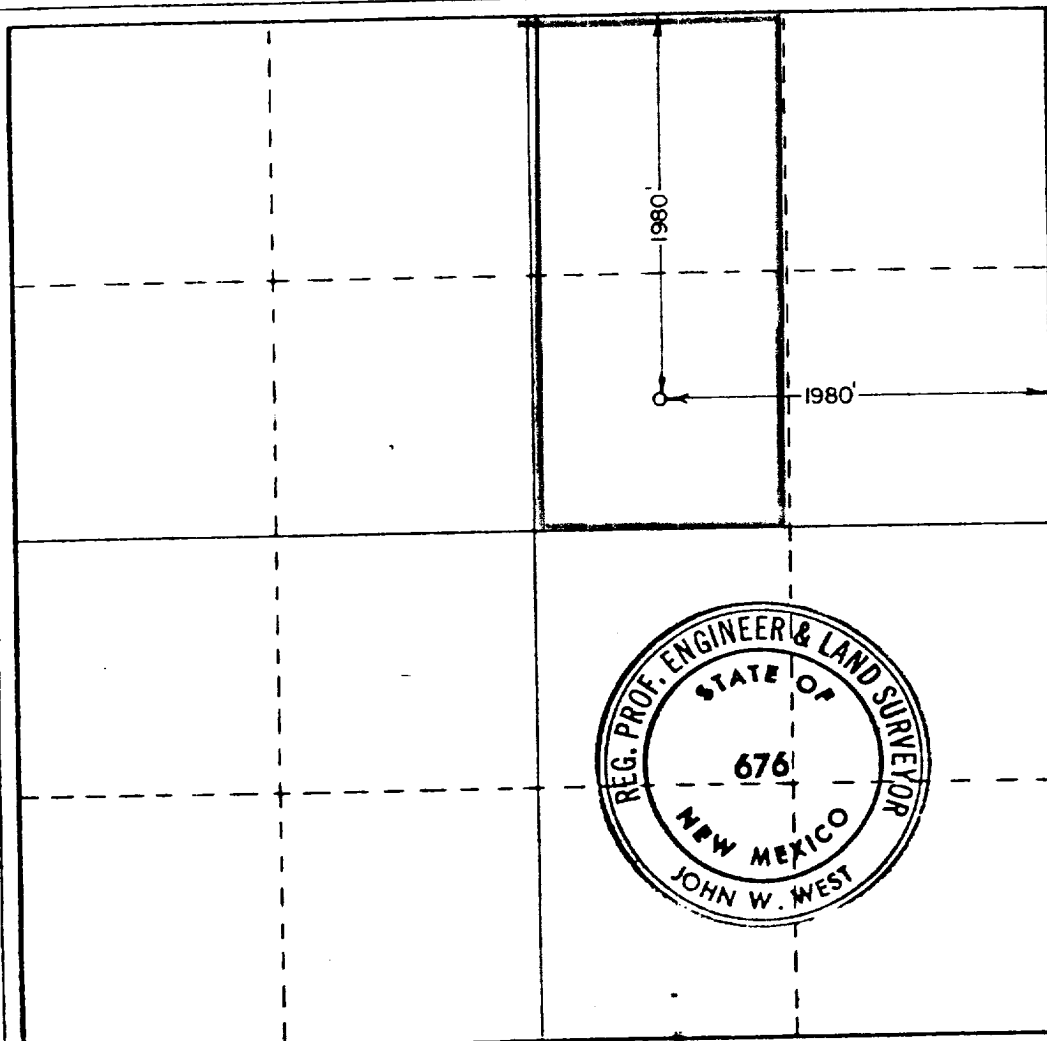
Operator <b>Coastal Oil &amp; Gas Corp.</b>		Lease <b>Gongales Federal 31 <i>Federal</i></b>		Well No. <b>7</b>
Grid Letter <b>G</b>	Section <b>31</b>	Township <b>9 South</b>	Range <b>33 East</b>	County <b>Lea</b>
Actual Footage Location of Well:				
<b>1980</b>	feet from the <b>North</b>	line and	<b>1980</b>	feet from the <b>East</b> line
Ground Level Elev. <b>4257.6</b>	Producing Formation <b>San Andres</b>	Pool <b>Flying "M" (SA)</b>		Dedicated Acreage: <b>80</b> Acres

1. Outline the acreage dedicated to the subject well by colored pencil or hatchure marks on the plat below.
2. If more than one lease is dedicated to the well, outline each and identify the ownership thereof (both as to working interest and royalty).
3. If more than one lease of different ownership is dedicated to the well, have the interests of all owners been consolidated by communitization, unitization, force-pooling, etc?

☐ Yes ☐ No If answer is "yes," type of consolidation \_\_\_\_\_

If answer is "no," list the owners and tract descriptions which have actually been consolidated. (Use reverse side of this form if necessary.) \_\_\_\_\_

No allowable will be assigned to the well until all interests have been consolidated (by communitization, unitization, forced-pooling, or otherwise) or until a non-standard unit, eliminating such interests, has been approved by the Commission.



CERTIFICATION

I hereby certify that the information contained herein is true and complete to the best of my knowledge and belief

*Lee W. Thying*

Name

Lee W. Thying

Position

Sr. Drilling Engineer

Company

Coastal Oil & Gas Corp.

Date

June 25, 1980

I hereby certify that the well location shown on this plat was plotted from field notes of actual surveys made by me or under my supervision, and that the same is true and correct to the best of my knowledge and belief.

Date Surveyed

June 10, 1980

Registered Professional Engineer and/or Land Surveyor

*John W. West*

Certificate No. **JOHN W. WEST 676**  
**PATRICK A. ROMERO 8863**  
**Ronald J. Eidson 3239**

0 320 640 960 1280 1600 1920 2240 2560 2880 3200 3520 3840 4160 4480 4800 5120 5440 5760 6080 6400

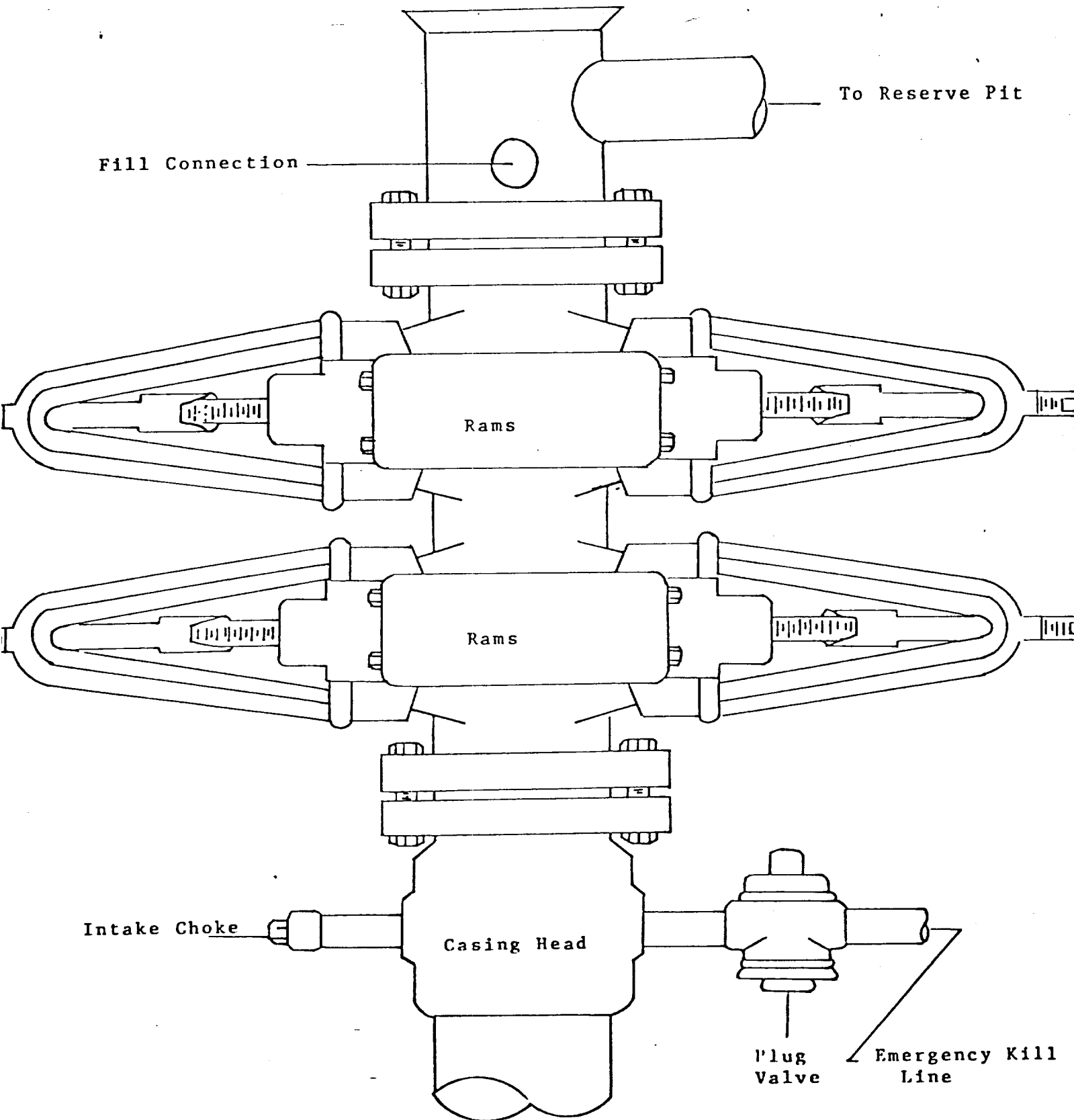


EXHIBIT "D"  
3000 PSI Working Pressure  
Blowout Preventer Stack

RECEIVED  
JUL 15 1980  
OIL CONSERVATION DIV

113