

NEW MEXICO OIL CONSERVATION COMMISSION
WELL LOCATION AND ACREAGE DEDICATION PLAT

Form C-102
Supersedes C-128
Effective 1-1-65

All distances must be from the outer boundaries of the Section

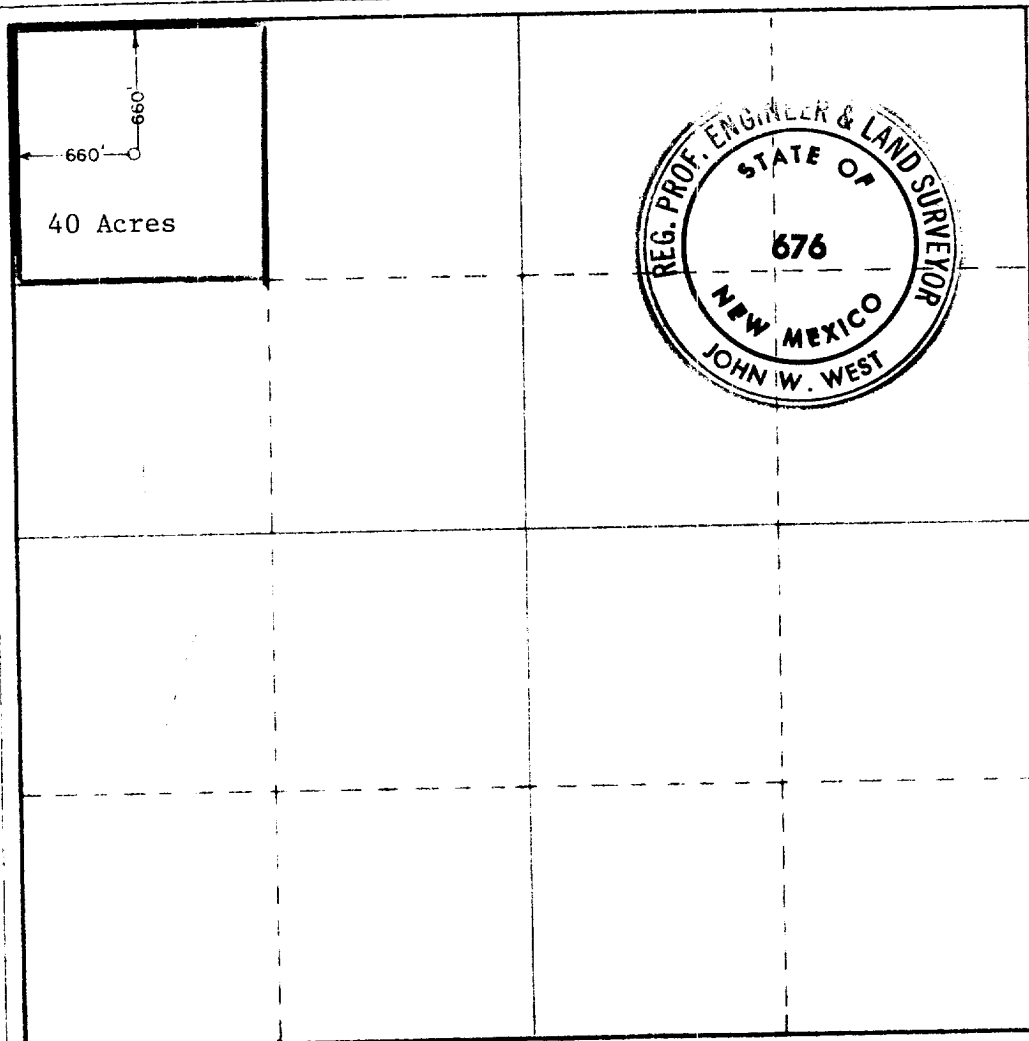
Lessor JOHN L. COX			Lessee PROCTER		Well No. 1
Tract Letter D	Section 7	Township 11 SOUTH	Range 32 EAST	County LEA	
Actual Footage Location of Well: 660 feet from the NORTH line and 660 feet from the WEST line					
Ground Level Elev. 4472.6	Producing Formation DEVONIAN	Pool WILDCAT		Dedicated Acreage 40	

- Outline the acreage dedicated to the subject well by colored pencil or hachure marks on the plat below.
- If more than one lease is dedicated to the well, outline each and identify the ownership thereof (both as to working interest and royalty).
- If more than one lease of different ownership is dedicated to the well, have the interests of all owners been consolidated by communitization, unitization, force-pooling, etc?

☐ Yes ☐ No If answer is "yes," type of consolidation _____

If answer is "no," list the owners and tract descriptions which have actually been consolidated. (Use reverse side of this form if necessary.) _____

No allowable will be assigned to the well until all interests have been consolidated (by communitization, unitization, forced-pooling, or otherwise) or until a non-standard unit, eliminating such interests, has been approved by the Commission.



CERTIFICATION

I hereby certify that the information contained herein is true and complete to the best of my knowledge and belief.

Martha Wittenbach

Name
MARTHA WITTENBACH

Position
PRODUCTION MANAGER

Company
JOHN L. COX

Date
AUGUST 27, 1980

I hereby certify that the well location shown on this plat was plotted from field notes of actual surveys made by me or under my supervision, and that the same is true and correct to the best of my knowledge and belief.

Date Surveyed
AUGUST 25, 1980

Registered Professional Engineer and Land Surveyor

John W. West
Certificate No. **JOHN W. WEST 676**
PATRICK A. ROMERO 6868
Ronald J. Eldson 3239

0 320 660 90 1320 1660 1980 2320 2640 2000 1800 1000 800 0

RECEIVED

AUG 28 1986

U.S. DEPT. OF JUSTICE

11