

30-025-27144

Form C-101

Revised 1-1-65

NO. OF COPIES RECEIVED	
DISTRIBUTION	
SANTA FE	
FILE	
U.S.G.S.	
LAND OFFICE	
OPERATOR	

NEW MEXICO OIL CONSERVATION COMMISSION

5A. Indicate Type of Lease

STATE ☐FEE ☒

5. State Oil & Gas Lease No.

APPLICATION FOR PERMIT TO DRILL, DEEPEN, OR PLUG BACK

a. Type of Work

DRILL ☒DEEPEN ☐PLUG BACK ☐

b. Type of Well

OIL WELL ☐GAS WELL ☐

OTHER

SINGLE ZONE ☐MULTIPLE ZONE ☐

c. Name of Operator

Adams Exploration Company

d. Address of Operator

P. O. Box 10585, Midland, Texas 79702

e. Location of Well

UNIT LETTER H

LOCATED 1980

FEET FROM THE North

LINE

ND 660

FEET FROM THE East

LINE OF SEC. 12

TWP. 9-S

RGE. 34-E

NMPM

7. Unit Agreement Name

8. Farm or Lease Name

Bowman et al

9. Well No.

1

10. Field and Pool, or Wildcat
Vada (Penn)

12. County

Lea

19. Proposed Depth

9900'

19A. Formation

Bough "C"

20. Rotary or C.T.

Rotary

f. Elevations (Show whether DF, RT, etc.)

4210.3 GR

21A. Kind & Status Plug. Bond

Blanket

21B. Drilling Contractor

Warton Drilg Company

22. Approx. Date Work will start

11-3-80

PROPOSED CASING AND CEMENT PROGRAM

SIZE OF HOLE	SIZE OF CASING	WEIGHT PER FOOT	SETTING DEPTH	SACKS OF CEMENT	EST. TOP
17½"	13 3/8" or 12 3/4"	48# - 38#	± 400	± 400 SX	Surface
12½" or 11"	8 5/8"	24# - 32#	± 4000	900 SX	± 2500'
7 7/8"	4½" or 5½"	10.5# - 15.5#	TD	350 SX	7500'

Drill 17½" hole using native fresh wtr mud to approx. 400'. Run & cmt 12 3/4" or 13 3/8" surface csg @ TD & circ cmt to surface. Drill out w/12½" or 11" bit using brine wtr to approx. TD of 4000'. Run 8 5/8" inter. csg to TD & cmt w/sufficient cmt to bring top to 2500' from surface. Drill out w/7 7/8" bit thru Bough "C" section, using fresh wtr gel mud. Run DST & logs as determined by sample evaluation. If well deemed productive 4½" or 5½" oil string will be run.

APPROVAL VALID
FOR 90 DAYS UNLESS
DRILLING COMMENCED,

EXPIRES 2/14/81

ABOVE SPACE DESCRIBE PROPOSED PROGRAM: IF PROPOSAL IS TO DEEPEN OR PLUG BACK, GIVE DATA ON PRESENT PRODUCTIVE ZONE AND PROPOSED NEW PRODUCTION ZONE. GIVE BLOWOUT PREVENTER PROGRAM, IF ANY.

I hereby certify that the information above is true and complete to the best of my knowledge and belief.

ed D.C. Helm Title Operations Manager Date 10-29-80

(This space for State Use)

APPROVED BY Leslie A. Clement TITLE

DATE

NOV 17 1980

CONDITIONS OF APPROVAL, IF ANY: Cement on the intermediate casing must be brought from the top of the salt or Anhydrite to the surface casing. You can do this by circulating the intermediate casing with cement or a DV tool at the top of the salt.

NEW MEXICO OIL CONSERVATION COMMISSION
WELL LOCATION AND ACREAGE DEDICATION PLAT

Form C-102
Supersedes C-128
Effective 1-1-63

All distances must be from the outer boundaries of the Section

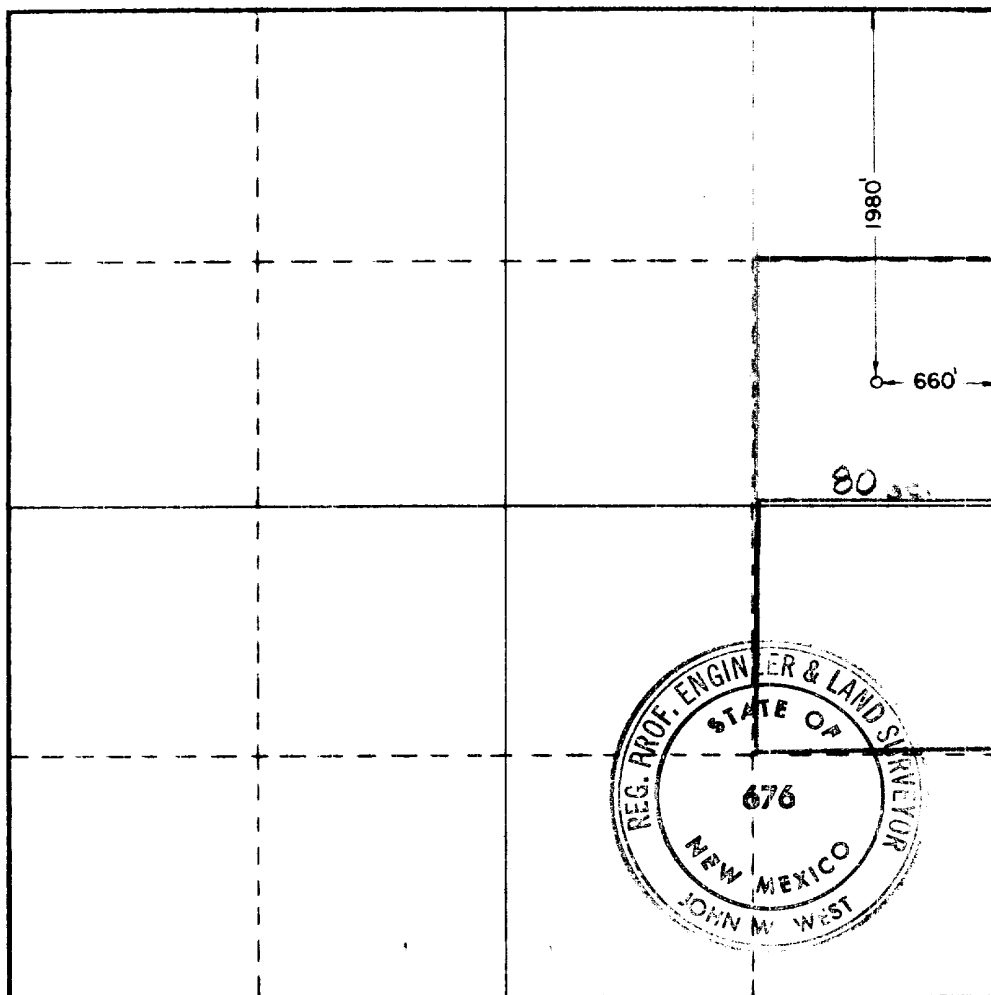
Operator Adams Exploration Co.			Lease Bowman et al		Well No. 1
Unit Letter H	Section 12	Township 9 South	Range 34 East	County Lea	
Actual Footage Location of Well: 1980 feet from the north line and 660 feet from the east line					
Ground Level Elev. 4210.3'	Producing Formation Bough "C"		Pool Vada (Penn)		Dedicated Acreage: 80 Acres

1. Outline the acreage dedicated to the subject well by colored pencil or hatchure marks on the plat below.
2. If more than one lease is dedicated to the well, outline each and identify the ownership thereof (both as to working interest and royalty).
3. If more than one lease of different ownership is dedicated to the well, have the interests of all owners been consolidated by communitization, unitization, force-pooling, etc?

☐ Yes ☐ No If answer is "yes," type of consolidation _____

If answer is "no," list the owners and tract descriptions which have actually been consolidated. (Use reverse side of this form if necessary.) _____

No allowable will be assigned to the well until all interests have been consolidated (by communitization, unitization, forced-pooling, or otherwise) or until a non-standard unit, eliminating such interests, has been approved by the Commission.



CERTIFICATION

I hereby certify that the information contained herein is true and complete to the best of my knowledge and belief.

D.C. Helm D.C. Helm

Name

Operations Manager

Position

Adams Exploration Company

Company

October 29, 1980

Date

R.L. Romero

I hereby certify that the well location shown on this plat was plotted from field notes of actual surveys made by me or under my supervision, and that the same is true and correct to the best of my knowledge and belief.

Date Surveyed

Oct. 23, 1980

Registered Professional Engineer and/or Land Surveyor

John M. West

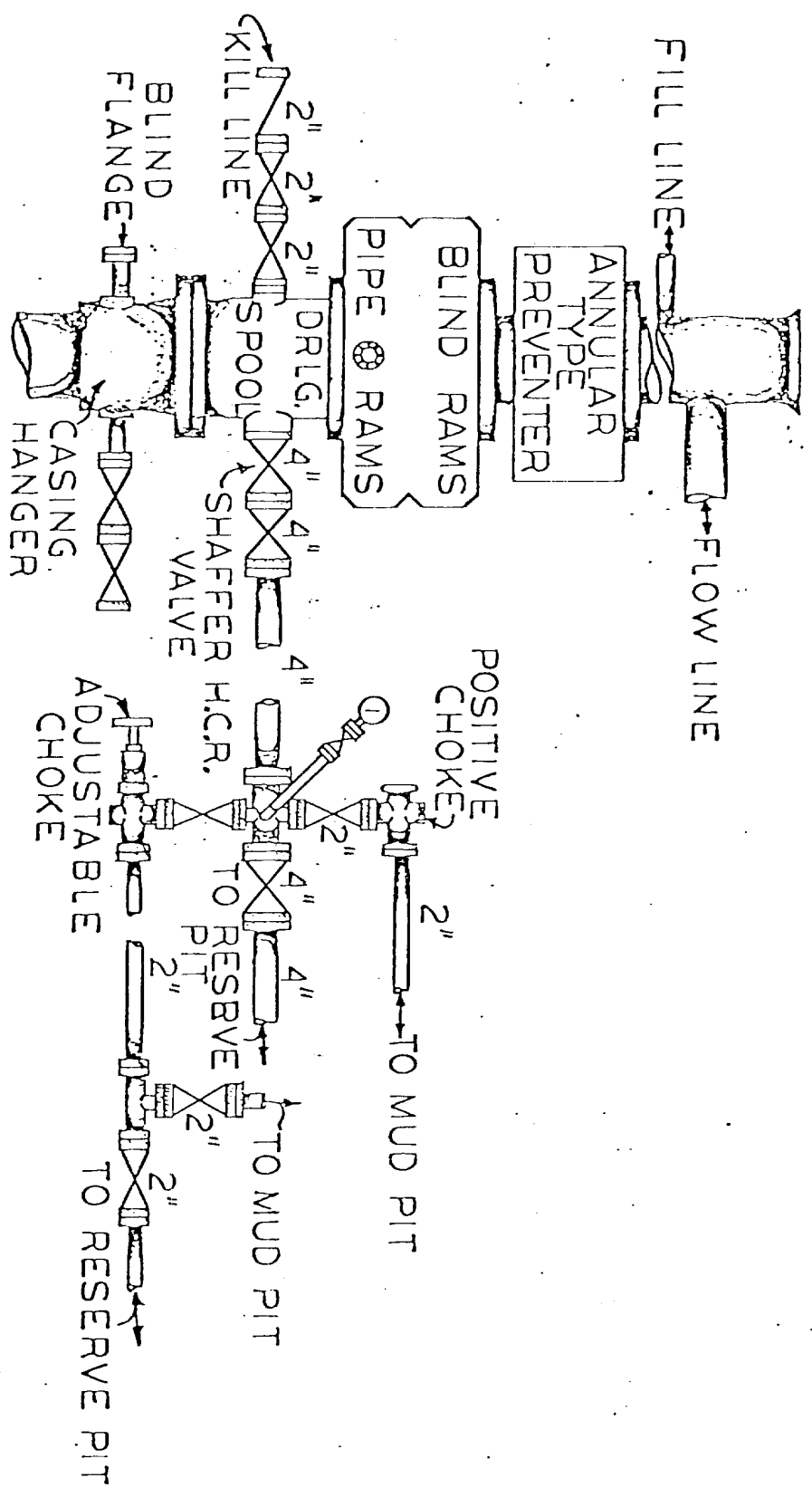
Certificate No. **JOHN M. WEST 676**
PATRICK A. ROMERO 6663
Ronald J. Eidsen 3239

0 330 660 990 1320 1650 1980 2310 2640 2970 3300 3630 3960 4290 4620 4950 5280 5610 5940 6270 6600

WARTON DRILLING CO.

B.O.P. ARRANGEMENT RIG NO. 5

3000 LB. W.P. B.O.P.
 12" SHAFFER TYPE "B" HYDRAULIC B.O.P. 3000 P.S.I.
 10" G.K. HYDRIL 13000 W.P.
 160 GALLON-6 STATION KOOMEY ACCUMULATOR
 5000 LB. W.P. CHOKE MANIFOLD



DATE 6 31 78

RE: Bowman ETAL #1
 Lea County, New Mexico