

All distances must be from the outer boundaries of the Section.

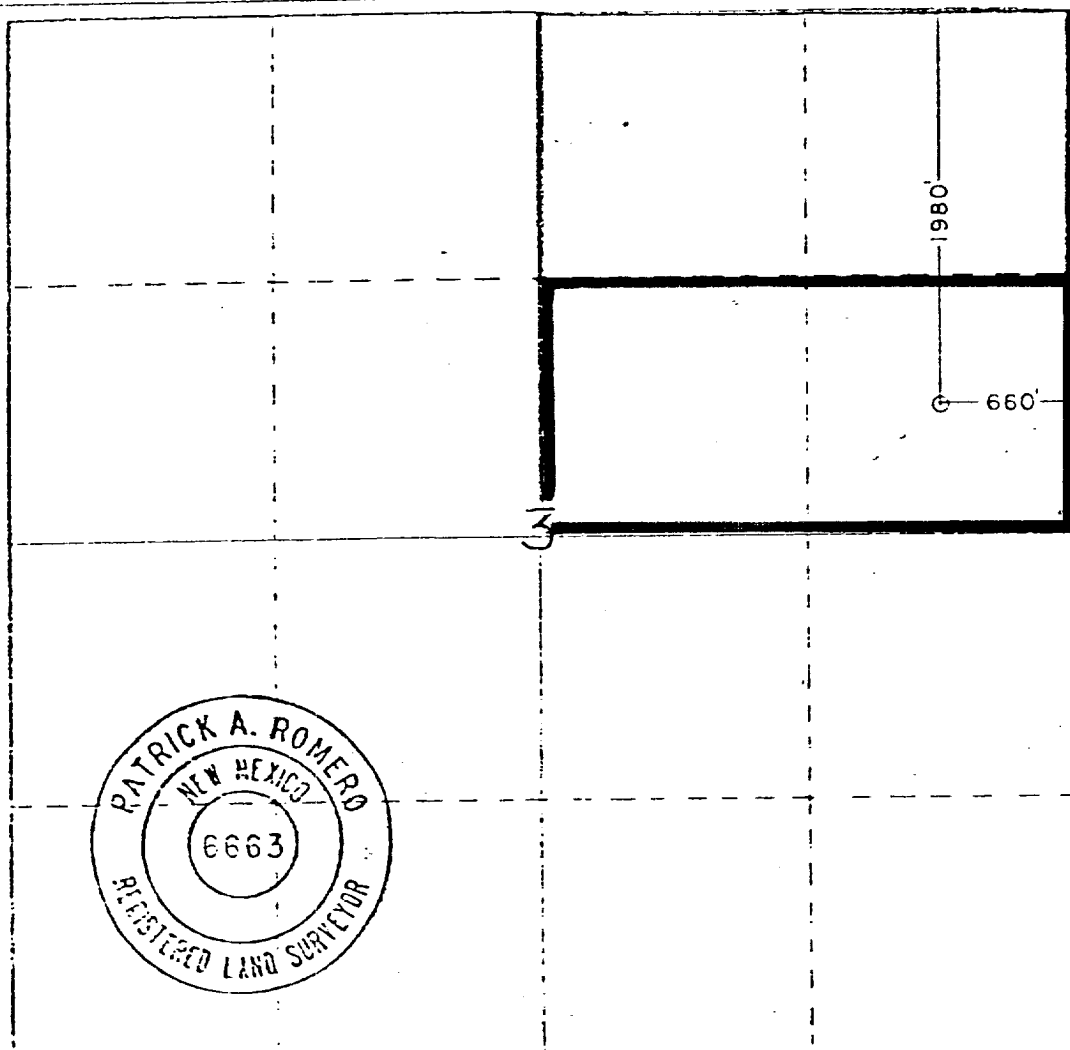
Operator Dorana Oil Corporation		Lease McMillan		Well No. 1
Unit Letter H	Section 3	Township 9 South	Range 34 East	County Lea
Actual Footage Location of Well: 1980 feet from the North line and 660 feet from the East line				
Ground Level Elev. 4251.1	Producing Formation Not producing	Pool Vada (Pena) Jenkins Wolfcamp	Dedicated Acreage: 40 Acres	

- Outline the acreage dedicated to the subject well by colored pencil or hatchure marks on the plat below.
- If more than one lease is dedicated to the well, outline each and identify the ownership thereof (both as to working interest and royalty).
- If more than one lease of different ownership is dedicated to the well, have the interests of all owners been consolidated by communitization, unitization, force-pooling, etc?

☐ Yes ☐ No If answer is "yes," type of consolidation (One lease)

If answer is "no," list the owners and tract descriptions which have actually been consolidated. (Use reverse side of this form if necessary.)

No allowable will be assigned to the well until all interests have been consolidated (by communitization, unitization, forced-pooling, or otherwise) or until a non-standard unit, eliminating such interests, has been approved by the Division.



CERTIFICATION

I hereby certify that the information contained herein is true and complete to the best of my knowledge and belief.

Name

Position

Company

Date

I hereby certify that the well location shown on this plat was plotted from field notes of actual surveys made by me or under my supervision, and that the same is true and correct to the best of my knowledge and belief.

Date Surveyed

Dec. 22, 1980

Registered Land Surveyor
and Oil and Gas Surveyor

Certificate No. **JOHN W. WEST 678**
PATRICK A. ROMERO 6663
Donna J. Friden 3239