

NO. OF COPIES RECEIVED	
DISTRIBUTION	
DATE	
FILE	
S.G.S.	
AND OFFICE	
PERATOR	

W MEXICO OIL CONSERVATION COMMISSION

30-025-27215

Form C-101

Revised 1-1-85

5A. Indicate Type of Lease

STATE ☐FEE ☒

5. State Oil & Gas Lease No.

7. Unit Agreement Name

8. Farm or Lease Name

McMillan

9. Well No.

1

10. Field and Pool, or Wildcat
Vada (Penn)12. County
Lea

19. Proposed Depth

9900'

19A. Formation

Bough C

20. Rotary or C.T.

Rotary

Elevations (Show whether DF, RT, etc.)

4251.1 GR

21A. Kind & Status Plug. Bond

Blanket

21B. Drilling Contractor

Wilbros Drlg. Co.

22. Approx. Date Work will start

1-11-81

PROPOSED CASING AND CEMENT PROGRAM

SIZE OF HOLE	SIZE OF CASING	WEIGHT PER FOOT	SETTING DEPTH	SACKS OF CEMENT	EST. TOP
17½"	13-3/8"	48#	± 400'	± 400 sx	surface
12½"	8-5/8"	24# - 32#	± 4000'	± 900 sx	± 400
7-7/8"	4½ or 5½"	10.5# - 15.5#	TD	350 sx	7500'

Drill 17½" hole using native fresh wtr mud to approx. 400'. Run & cmt 13-3/8" surface csg @ TD & circ. cmt. to surface. Drill out w/12½" bit using brine wtr to approx. TD of 4000'. Run 8-5/8" inter. csg. to TD & cmt. w/sufficient cmt. to bring top to 400' from surface. Drill out w/7-7/8" bit thru Bough C section, using fresh wtr gel mud. Run DST & logs as determined by sample evaluation. If well deemed productive 4½ or 5½" oil string will be run.

APPROVAL VALID
FOR 30 DAYS UNLESS
DRILLING COMMENCED,

EXPIRES

4/9/81

GIVE SPACE DESCRIBE PROPOSED PROGRAM: IF PROPOSAL IS TO DEEPEN OR PLUG BACK, GIVE DATA ON PRESENT PRODUCTIVE ZONE AND PROPOSED NEW PRODUCTION. GIVE BLOWOUT PREVENTER PROGRAM, IF ANY.

I certify that the information above is true and complete to the best of my knowledge and belief.

D.C. Helm Title Operations Manager

Date January 8, 1981

(This space for State Use)

APPROVED BY

SUPERVISOR DISTRICT

DATE

JAN 9 1981

**NEW MEXICO OIL CONSERVATION COMMISSION
WELL LOCATION AND ACREAGE DEDICATION PLAT**

Form O-13,
Supersedes O-128
Effective 10-65

All distances must be from the outer boundaries of the Section

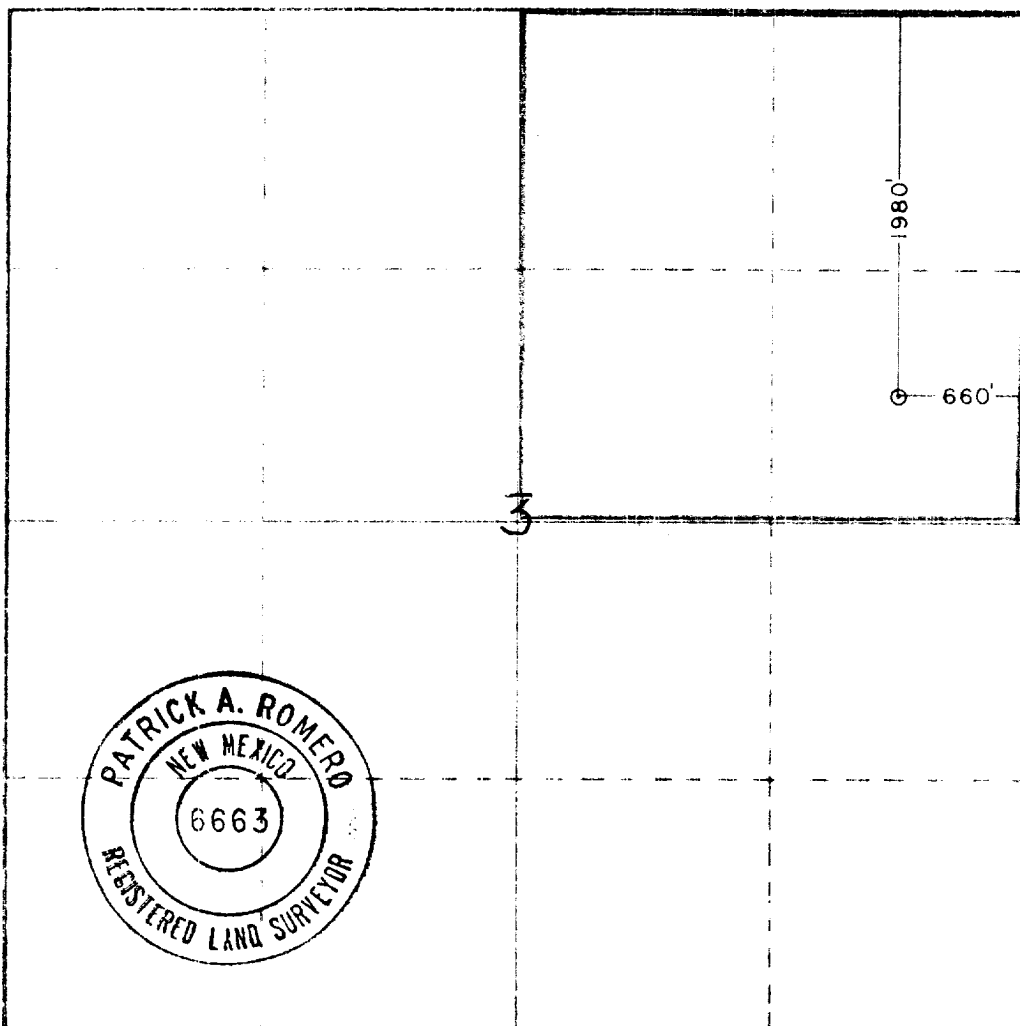
Adams Exploration Company			McMillan			Well No. 1		
H 3 9South			Range 34East			County Lea		
1980 feet from the North line and 660 feet from the East line								
4251.1 Bough C			Pool Vada (Penn)			Dedicated Acreage: 160 Acres		

1. Outline the acreage dedicated to the subject well by colored pencil or hatchure marks on the plat below.
2. If more than one lease is dedicated to the well, outline each and identify the ownership thereof (both as to working interest and royalty)
3. If more than one lease of different ownership is dedicated to the well, have the interests of all owners been consolidated by communitization, unitization, force-pooling, etc?

☐ Yes ☒ No If answer is "yes," type of consolidation _____

If answer is "no," list the owners and tract descriptions which have actually been consolidated. (Use reverse side of this form if necessary.) _____

No allowance will be assigned to the well until all interests have been consolidated (by communitization, unitization, forced-pooling, or otherwise) or until a non-standard unit, eliminating such interests, has been approved by the Commission.



CERTIFICATION

I hereby certify that the information contained herein is true and complete to the best of my knowledge and belief.

Signature: *D. C. Helm*
Name: D. C. Helm
Position: Operations Mgr.

Company: Adams Exploration Company

Date: January 8, 1981

By: _____

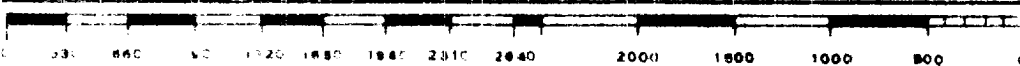
I hereby certify that the well location shown on this plat was plotted from field notes of actual surveys made by me or under my supervision, and that the same is true and correct to the best of my knowledge and belief.

Date Surveyed: Dec. 22, 1980

Registered Professional Engineer and/or Land Surveyor

Signature: *Patrick A. Romero*

Certificate No. JOHN W. WEST 676
PATRICK A. ROMERO 6663
RONALD J. EIDSON 3239



WRS COMPLETION REPORT

COMPLETIONS
PI# 30-T-0013 08/29/88 SEC 3 TWP 9S RGE 34E
30-025-27215-0001 PAGE 1

NMEX LEA * 1980FNL 660FEL SEC SE NE
STATE COUNTY FOOTAGE SPOT
CHALLENGER MINERALS OPERATOR D X
1 MCMILLAN WELL CLASS INIT: FIN
WELL NO. 4251GR LEASE NAME
OPER ELEV

JENKINS
FIELD POOL AREA
API 30-025-27215-0001
LEASE TYPE NO. PERMIT OR WELL ID. NO.
08/19/1988 WO-UNIT
SPUD DATE COMP. DATE TYPE TOOL AB-LOC
9650 WOLFCAMP
PROJ DEPTH PROJ FORM CONTRACTOR STATUS

DRILLERS T.D. LOG T.D. OTD 9650
PLUG BACK TD OLD T.D. FORM T.D.
LOCATION DESCRIPTION

19 MI NE CAPROCK, NM

WELL IDENTIFICATION/CHANGES

FLD CHGD FROM VADA
PROJ FM CHGD FROM PENNSYLVANIAN
OPR CHGD FROM DORANA OIL

DRILLING PROGRESS DETAILS

CHALLENGER MINERALS
12707 N FREEWAY STE 500
HOUSTON, TX 77001
713-873-7500
OWWO: OLD INFO: FORMERLY ADAMS EXPL, #1 MCMILLAN
ELEV 4251 GR. SPUD 1/11/81. 13 3/8 @ 390 W/525
SX, 8 5/8 @ 4004 W/1650 SX. OTD 9650. COMP
2/19/81. D&A.
02/25 LOC/1987/
08/25 ABND LOC

Copyrighted 1988
Petroleum
Information Corporation

IC# 300257005587
Petroleum Information

BB a company of
The Dun & Bradstreet Corporation

PI-WRS-GET
Form No 1B7