

NEW MEXICO OIL CONSERVATION COMMISSION
WELL LOCATION AND ACREAGE DEDICATION PLAT

Form C-102
Supersedes C-128
Effective 1-65

AMENDED

All distances must be from the outer boundaries of the Section

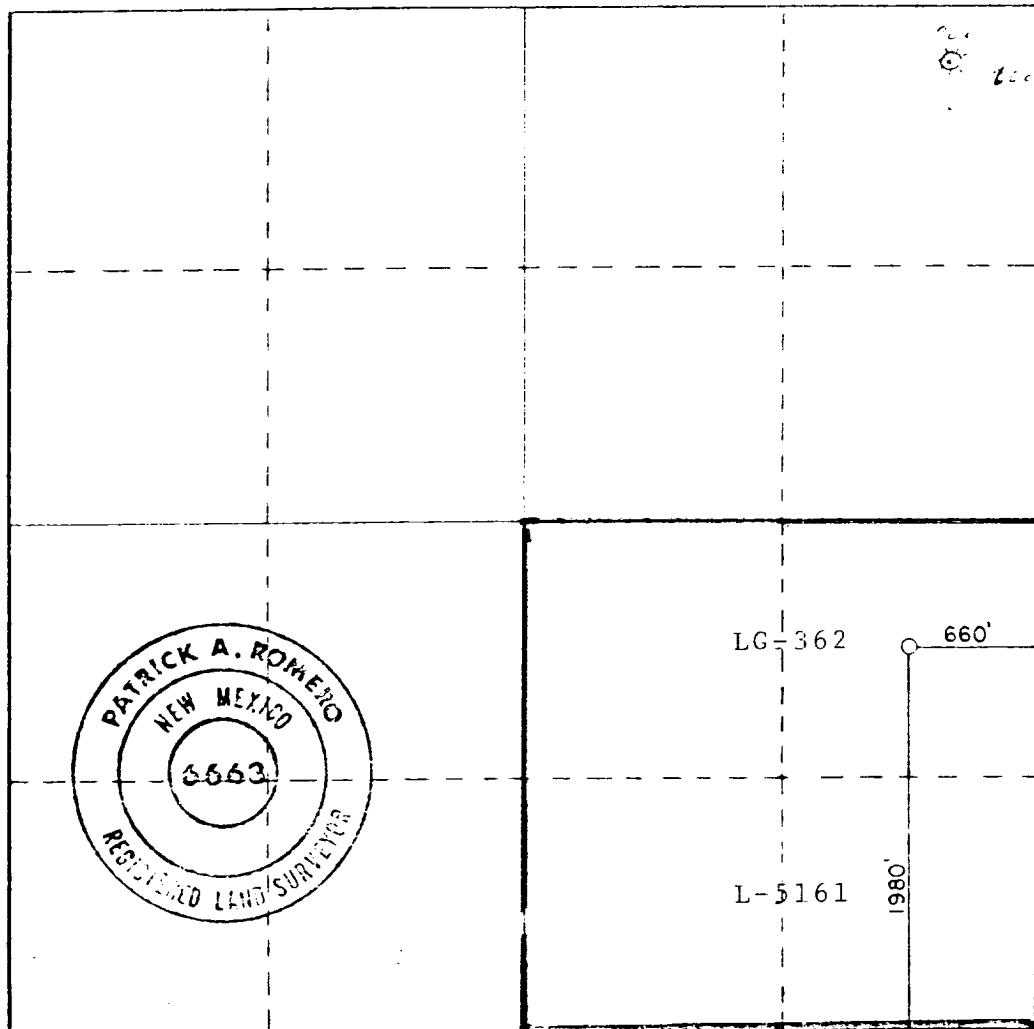
Operator Brazos Petroleum Co.			Lease Getty State Com.		Well No. 1
Section I	Section 36	Range 9 South	Range 37 East	County Lea County, New Mexico	
Actual Location of Well:					
1980	feet from the South	line and	660	feet from the East	line
Ground Level Elev. 3943.7	Producing Formation San Andres		Pool Sawyer San Andres		Dedicated Acreage: 1.40 Acres

1. Outline the acreage dedicated to the subject well by colored pencil or hatchure marks on the plat below.
2. If more than one lease is dedicated to the well, outline each and identify the ownership thereof (both as to working interest and royalty).
3. If more than one lease of different ownership is dedicated to the well, have the interests of all owners been consolidated by communitization, unitization, force-pooling, etc?

☒ Yes ☐ No If answer is "yes," type of consolidation Communitization

If answer is "no," list the owners and tract descriptions which have actually been consolidated. (Use reverse side of this form if necessary.) _____

No allowable will be assigned to the well until all interests have been consolidated (by communitization, unitization, forced-pooling, or otherwise) or until a non-standard unit, eliminating such interests, has been approved by the Commission.



CERTIFICATION

I hereby certify that the information contained herein is true and complete to the best of my knowledge and belief.

Date 1-12-81
Name Patrick Romero
Position Agent
Company Brazos Petroleum Co.
Date 1/12/81

I hereby certify that the well location shown on this plat was plotted from field notes of actual surveys made by me or under my supervision, and that the same is true and correct to the best of my knowledge and belief.

Date Surveyed 1-5-81
Registered Professional Engineer and/or Land Surveyor
Patrick Romero
Certificate No. JOHN A. WEST 6
PATRICK A. ROMERO 6
Ronald J. Eidson 37

