

NO. OF COPIES RECEIVED	
DISTRIBUTION	
SANTA FE	
FILE	
U.S.G.S.	
LAND OFFICE	
OPERATOR	

5A. Indicate Type of Lease

STATE ☐ REC ☒

5. State Oil &amp; Gas Lease No.

## APPLICATION FOR PERMIT TO DRILL, DEEPEN, OR PLUG BACK

Type of Work

Type of Well DRILL ☒ DEEPEN ☐ PLUG BACK ☐  
OIL WELL ☒ GAS WELL ☐ OTHER ☐ SINGLE ZONE ☐ MULTIPLE ZONE ☐

Name of Operator

Yates Petroleum Corporation

Address of Operator

207 S. 4th, Artesia, New Mexico 88210

Location of Well

UNIT LETTER G LOCATED 1650 FEET FROM THE North LINE2310 FEET FROM THE East LINE OF SEC. 8 TWP. 10S RGE. 37E NMPM

7. Unit Agreement Name

8. Farm or Lease Name

Santa Fe "VC"

9. Well No.

1

10. Field and Pool, or Wildcat

W. Sawyer-SA

UNDESIGNATED

12. County

Lea

19. Proposed Depth

5050'

19A. Formation

San Andres

20. Rotary or C.T.

Rotary

Elevations (Show whether DF, RT, etc.)

3975.6' GL

21A. Kind &amp; Status Plug. Bond

Blanket

21B. Drilling Contractor

not designated

22. Approx. Date Work will start

ASAP

## PROPOSED CASING AND CEMENT PROGRAM

SIZE OF HOLE	SIZE OF CASING	WEIGHT PER FOOT	SETTING DEPTH	SACKS OF CEMENT	EST. TOP
12 1/4"	8 5/8"	24#	400'	300 sx	circulated
6 1/4"	4 1/2"	9.5#	TD	TD	

We propose to drill and test the San Andres formation. Approximately 400' of surface casing will be set and cement circulated to shut off gravel and caving. If commercial, production casing will be run and cemented with adequate cover, perforated and stimulated as needed for production.

MUD PROGRAM: Salt water gel with starch & LCM from surface to TD.

BOP PROGRAM: BOP's will be installed at the offset and tested daily.

APPROVAL VALID FOR 180 DAYS  
PERMIT EXPIRES 3/1/83  
UNLESS DRILLING UNDERWAY

ABOVE SPACE DESCRIBE PROPOSED PROGRAM; IF PROPOSAL IS TO DEEPEN OR PLUG BACK, GIVE DATA ON PRESENT PRODUCTIVE ZONE AND PROPOSED NEW PRODUCTION ZONE. GIVE BLOWOUT PREVENTER PROGRAM, IF ANY.

I hereby certify that the information above is true and complete to the best of my knowledge and belief.

Signed John Beardsley Title Regulatory Coordinator Date 8/27/82

(This space for Signature)

JERRY GRAYSON

DISTRICT 1 SUPERVISOR

APPROVED BY \_\_\_\_\_ TITLE \_\_\_\_\_ DATE \_\_\_\_\_

CONDITIONS OF APPROVAL, IF ANY:

4 1/2" casing must be circulated with cement

AUG 30 1982

**N MEXICO OIL CONSERVATION COMMISS**  
**WELL LOCATION AND ACREAGE DEDICATION PLAT**

Fbrn C-102  
 Supersedes C-128  
 Effective 1-1-65

All distances must be from the outer boundaries of the Section.

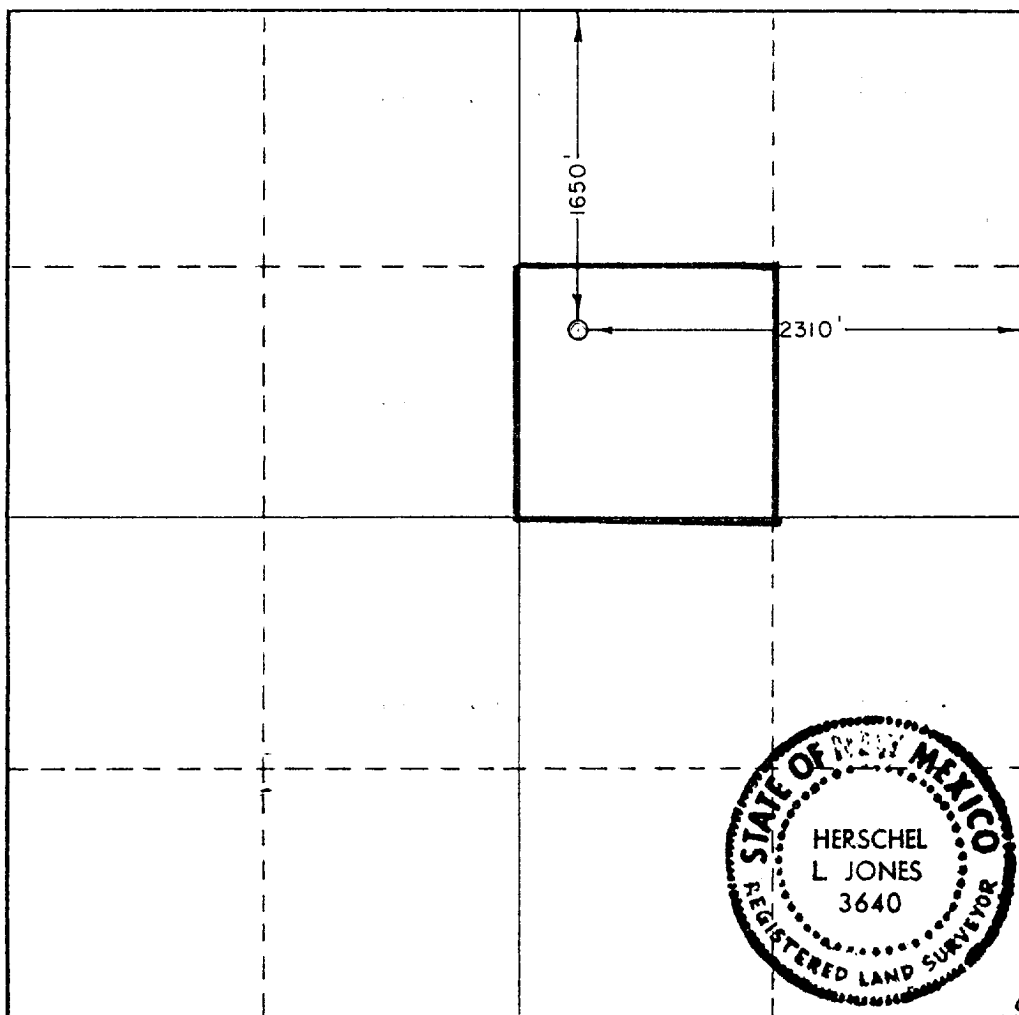
Operator <b>YATES PETROLEUM CORPORATION</b>			Lease <b>Santa Fe "VC"</b>		Well No. <b>1</b>
Unit Letter <b>G</b>	Section <b>8</b>	Township <b>10 South</b>	Range <b>37 East</b>	County <b>Lea</b>	
Actual Footage Location of Well:					
<b>1650</b> feet from the <b>North</b> line and		<b>2310</b> feet from the <b>East</b> line			
Ground Level Elev: <b>3975.6'</b>	Producing Formation <b>San Andres</b>	Pool <b>UNDESIGNATED (A)</b>	Dedicated Acreage: <b>40</b> Acres		

1. Outline the acreage dedicated to the subject well by colored pencil or hatchure marks on the plat below.
2. If more than one lease is dedicated to the well, outline each and identify the ownership thereof (both as to working interest and royalty).
3. If more than one lease of different ownership is dedicated to the well, have the interests of all owners been consolidated by communitization, unitization, force-pooling, etc?

☐ Yes    ☐ No    If answer is "yes," type of consolidation \_\_\_\_\_

If answer is "no," list the owners and tract descriptions which have actually been consolidated. (Use reverse side of this form if necessary.) \_\_\_\_\_

No allowable will be assigned to the well until all interests have been consolidated (by communitization, unitization, forced-pooling, or otherwise) or until a non-standard unit, eliminating such interests, has been approved by the Commission.



**CERTIFICATION**

*I hereby certify that the information contained herein is true and complete to the best of my knowledge and belief.*

Name

**Ken Beardemphl**

Position

**Regulatory Coordinator**

Company

**Yates Petroleum Corp.**

Date

**8/27/82**

*I hereby certify that the well location shown on this plat was plotted from field notes of actual surveys made by me or under my supervision, and that the same is true and correct to the best of my knowledge and belief.*

Date Surveyed

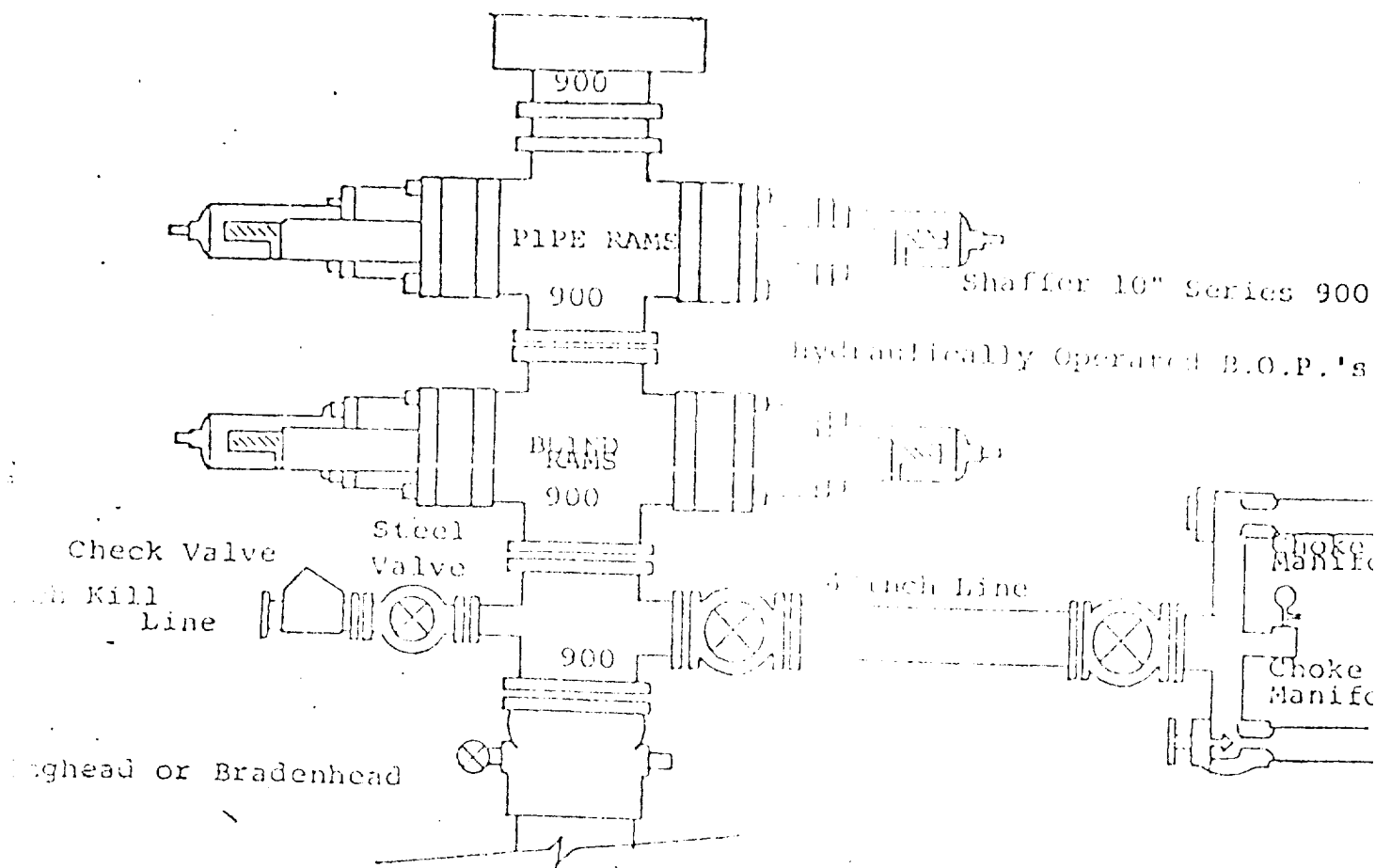
**August 25, 1982**

Registered Professional Engineer and/or Land Surveyor

Certificate No.

**3640**

0 330 660 990 1320 1650 1980 2310 2640 2000 1500 1000 500 0



FOLLOWING CONSTITUTE MINIMUM BLOWOUT PREVENTER REQUIREMENTS

- All preventers to be hydraulically operated with secondary manual controls.
- Installed prior to drilling out from under casing.
- Choke outlet to be a minimum of 4" diameter.
- Kill line to be of all steel construction of 2" minimum diameter.
- All connections from operating manifolds to preventers to be all steel.
- Hole or tube a minimum of one inch in diameter.
- The available closing pressure shall be at least 15% in excess of that required with sufficient volume to operate the B.O.P.'s.
- All connections to and from preventer to have a pressure rating equivalent to that of the B.O.P.'s.
- Inside blowout preventer to be available on rig floor.
- Operating controls located a safe distance from the rig floor.
- Hole must be kept filled on trips below intermediate casing.
- B. P. float must be installed and used below zone of first gas intrusion.

RECEIVED

AUG 20 1982

U.S. DEPT. OF JUSTICE  
HOMES OFFICE

173