

30-025-28007

STATE OF NEW MEXICO  
OIL AND MINERALS DEPARTMENTOIL CONSERVATION DIVISION  
P. O. BOX 2088  
SANTA FE, NEW MEXICO 87501Form C-101  
Revised 10-1-78

OCT 29 1982

O. C. D.  
ARTESIA OFFICE

NO. OF COPIES RECEIVED	
DISTRIBUTION	
SANTA FE	
FILE	
U.S.G.S.	
LAND OFFICE	
OPERATOR	

5A. Indicate Type of Lease  
STATE ☒ FEE ☐

5. State Oil &amp; Gas Lease No.

V-196

7. Unit Agreement Name

8. Farm or Lease Name

State "14"

9. Well No.

1

10. Field and Pool, or Wildcat

Vada-Penn

12. County

Lea

## APPLICATION FOR PERMIT TO DRILL, DEEPEN, OR PLUG BACK

Type of Work

DRILL ☒DEEPEN ☐PLUG BACK ☐

Type of Well

OIL ☒GAS ☐

OTHER

SINGLE ☐MULTIPLE ☐

Name of Operator

Jubilee Energy Corporation

Address of Operator

3100 N. "A", Bldg. E, Suite 103, Midland, TX 79701

Location of Well

UNIT LETTER E LOCATED 1980 FEET FROM THE North LINE

660 FEET FROM THE West LINE OF SEC. 14 TWP. 9-S RCE. 34-E NMPM

19. Proposed Depth

9900'

19A. Formation

Bough "C"

20. Rotary or C.T.

Rotary

Elevations (Show whether DF, RT, etc.)

4229.1 GL

21A. Kind &amp; Status Plug. Bond

Individual Well

21B. Drilling Contractor

Tri- Service

22. Approx. Date Work will start

11-7-82

## PROPOSED CASING AND CEMENT PROGRAM

SIZE OF HOLE	SIZE OF CASING	WEIGHT PER FOOT	SETTING DEPTH	SACKS OF CEMENT	EST. TOP
15"	12 3/4"	37#	380'	400 SX	Circ.
11"	8 5/8"	24-32#	4000'	200 SX	3000'
7 7/8"	5 1/2"	15.5 - 17#	9900'	300 SX	8400'

8 5/8

APPROVAL VALID FOR 180 DAYS  
PERMIT EXPIRES 5/4/83  
UNLESS DRILLING UNDERWAY

BELOW SPACE DESCRIBE PROPOSED PROGRAM: IF PROPOSAL IS TO DEEPEN OR PLUG BACK, GIVE DATA ON PRESENT PRODUCTIVE ZONE AND PROPOSED NEW PRODUCTIVE ZONE. GIVE BLOWOUT PREVENTER PROGRAM, IF ANY.

I hereby certify that the information above is true and complete to the best of my knowledge and belief.

Signature: Jerry Sexton Title: President Date: 10-26-82

(This space for State Use)  
ORIGINAL SIGNED BY  
JERRY SEXTON  
DISTRICT 1 SUPR.

APPROVED BY: \_\_\_\_\_ TITLE: \_\_\_\_\_ DATE: NOV 5 1982

CONDITIONS OF APPROVAL, IF ANY:

RECEIVED  
NOV 1 1982  
O.C.D.  
HOBBS OFFICE

NEW MEXICO OIL CONSERVATION COMMISSION  
WELL LOCATION AND ACREAGE DEDICATION PLAT

OCT 29 1982

Form C-102  
Supersedes C-128  
Effective 1-1-65

All distances must be from the outer boundaries of the Section.

O. C. D.

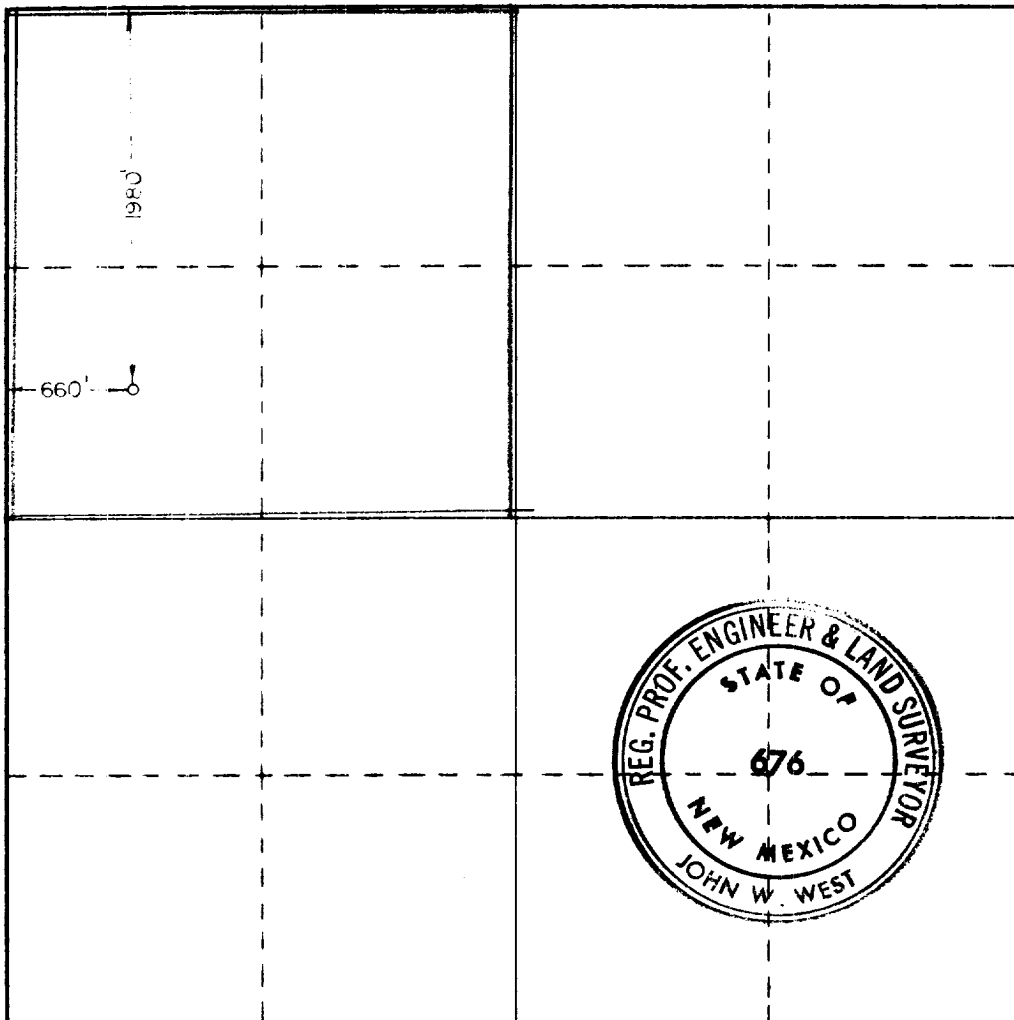
Operator <b>Jubilee Energy Corporation</b>			Lease <b>State 14</b>		ARTESIA, OFFICE	Well No. <b>1</b>
Unit Letter <b>E</b>	Section <b>14</b>	Township <b>9 South</b>	Range <b>34 East</b>	County <b>Lea County</b>		
Actual Footage Location of Well: <b>1980</b> feet from the <b>North</b> line and <b>660</b> feet from the <b>West</b> line						
Ground Level Elev. <b>4229.1</b>	Producing Formation <b>Bough "C"</b>		Pool <b>Vada-Penn</b>		Dedicated Acreage: <b>160</b> <del>80</del> Acres	

1. Outline the acreage dedicated to the subject well by colored pencil or hatchure marks on the plat below.
2. If more than one lease is dedicated to the well, outline each and identify the ownership thereof (both as to working interest and royalty).
3. If more than one lease of different ownership is dedicated to the well, have the interests of all owners been consolidated by communitization, unitization, force-pooling, etc?

☐ Yes ☐ No If answer is "yes," type of consolidation \_\_\_\_\_

If answer is "no," list the owners and tract descriptions which have actually been consolidated. (Use reverse side of this form if necessary.) \_\_\_\_\_

No allowable will be assigned to the well until all interests have been consolidated (by communitization, unitization, forced-pooling, or otherwise) or until a non-standard unit, eliminating such interests, has been approved by the Commission.



CERTIFICATION

I hereby certify that the information contained herein is true and complete to the best of my knowledge and belief.

*T. B. Garber*  
Name

T. B. Garber

Position  
President

Company  
Jubilee Energy Corp.

Date  
October 26, 1982

I hereby certify that the well location shown on this plat was plotted from field notes of actual surveys made by me or under my supervision, and that the same is true and correct to the best of my knowledge and belief.

Date Surveyed  
October 18, 1982

Registered Professional Engineer and/or Land Surveyor

*John W. West*

Certificate No. **JOHN W. WEST 676**  
**PATRICK A. ROMERO 6663**  
**Ronald J. Eidson 3239**

RECEIVED  
NOV 1 1982  
Q.C.C.  
HOBBS OFFICE

RECEIVED

TRI-SERVICE RIG #8

OCT 24 1982

O. C. D.  
ARTESIA OFFICE

