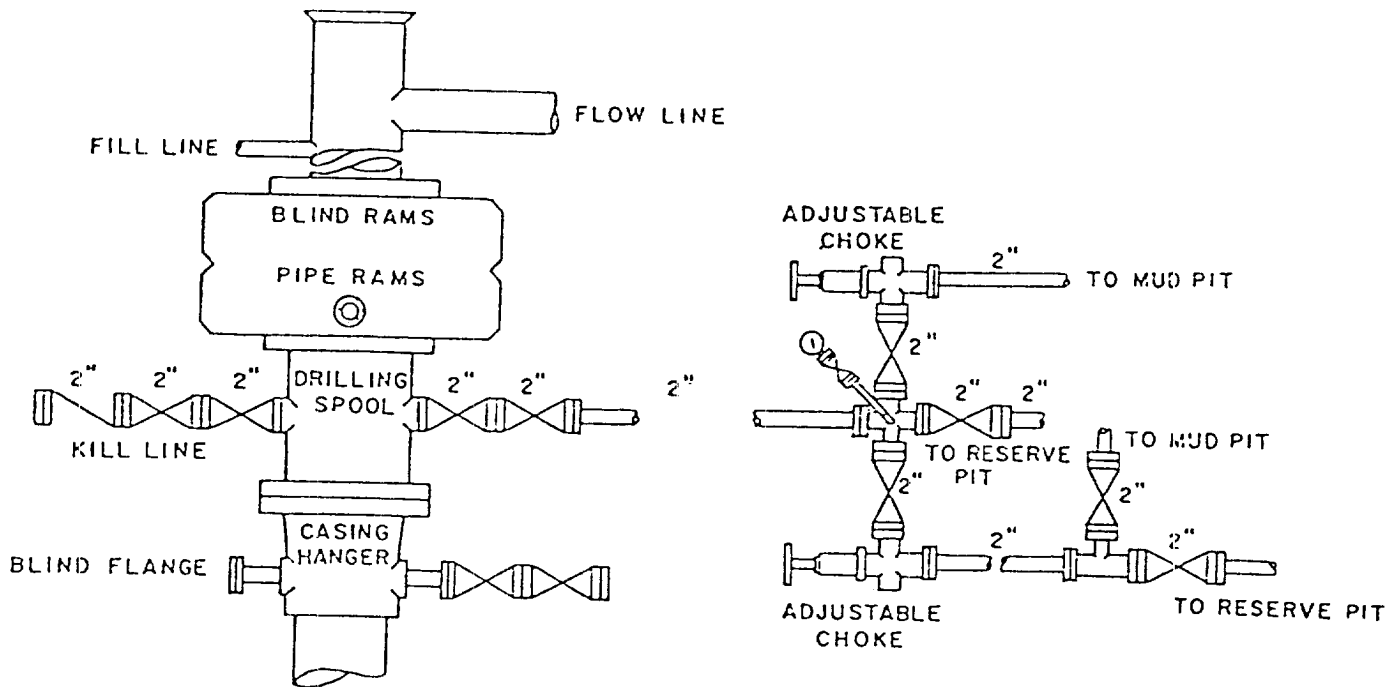


W M T OPERATING COMPANY, INC.  
No.1 Arco Federal  
2310' FSL 330' FWL Sec.4-10S-38E  
Lea County, N.M.



BOP DIAGRAM

3000# Working Pressure  
(Rams Operated Daily)

RECEIVED  
DEC 22 1982

Q.C.D.  
HOBBS OFFICE