

NO. OF COPIES RECEIVED	
DISTRIBUTION	
SANTA FE	
FILE	
U.S.G.S.	
AND OFFICE	
OPERATOR	

5A. Indicate Type of Lease
STATE <input checked="" type="checkbox"/> FEE <input type="checkbox"/>

5. State Oil & Gas Lease No.
L-191

XXXXXXXXXXXXXXXXXXXXXXXXXXXX
XXXXXXXXXXXXXXXXXXXXXXXXXXXX

APPLICATION FOR PERMIT TO DRILL, DEEPEN, OR PLUG BACK

1. TYPE OF WORK	DRILL <input checked="" type="checkbox"/>	DEEPEN <input type="checkbox"/>	PLUG BACK <input type="checkbox"/>
-----------------	---	---------------------------------	------------------------------------

7. Unit Agreement Name
-

2. TYPE OF WELL	OIL WELL <input checked="" type="checkbox"/>	GAS WELL <input type="checkbox"/>	OTHER <input type="checkbox"/>	SINGLE ZONE <input type="checkbox"/>	MULTIPLE ZONE <input type="checkbox"/>
-----------------	--	-----------------------------------	--------------------------------	--------------------------------------	--

8. Farm or Lease Name
Belco State

Name of Operator
Read & Stevens, Inc.

9. Well No.
1

Address of Operator
P.O. Box 1518, Roswell, NM 88201

10. Field and Pool, or Wildcat
Flying "M" San Andres

Location of Well
UNIT LETTER F LOCATED 1980 FEET FROM THE North LINE

XXXXXXXXXXXXXXXXXXXXXXXXXXXX
XXXXXXXXXXXXXXXXXXXXXXXXXXXX

10 1980 FEET FROM THE West LINE OF SEC. 5 TWP. 10S RGE. 33E NMPM
--

XXXXXXXXXXXXXXXXXXXXXXXXXXXX
------------------------------

XXXXXXXXXXXXXXXXXXXXXXXXXXXX
XXXXXXXXXXXXXXXXXXXXXXXXXXXX

12. County	XXXXXXXXXXXXXXXXXXXX
Lea	XXXXXXXXXXXXXXXXXXXX

XXXXXXXXXXXXXXXXXXXXXXXXXXXX
XXXXXXXXXXXXXXXXXXXXXXXXXXXX

19. Proposed Depth	19A. Formation	20. Rotary or C.T.
4500'	San Andres	Rotary

Elevations (Show whether DF, RT, etc.)	21A. Kind & Status Plug Bond	21B. Drilling Contractor	22. Approx. Date Work will start
4189.1' GR	Statewide	Sierra Drilg. Co. Rig #2	April 7, 1983

XXXXXXXXXXXXXXXXXXXXXXXXXXXX
------------------------------

PROPOSED CASING AND CEMENT PROGRAM

SIZE OF HOLE	SIZE OF CASING	WEIGHT PER FOOT	SETTING DEPTH	SACKS OF CEMENT	EST. TOP
12 1/4"	8 5/8"	24#	1300'	500sx	Circ.
7 7/8"	5 1/2"	17#	4500'	600sx	3000'

We propose to drill and test the San Andres formation. Approximately 1300' of 8 5/8" surface casing will be set to protect fresh water sands. Cement will be circulated. If the well is commercial, 5 1/2" production casing will be run and cemented to cover the pay zone with at least 600' of cement.

Mud Program: Native mud to 1300', brine 1300' to 3500', brine and starch 3500' to TD.

BOP Program: One 11" 5000psi WP Shaffer Type "LWS" Hydraulic operated, double BOP w/NL-Shaffer D05040-3S BOP control unit with 40 gal capacity.

APPROVAL VALID FOR 180 DAYS  
PERMIT EXPIRES 9/30/83  
UNLESS DRILLING UNDERWAY

ABOVE SPACE DESCRIBE PROPOSED PROGRAM: IF PROPOSAL IS TO DEEPEN OR PLUG BACK, GIVE DATA ON PRESENT PRODUCTIVE ZONE AND PROPOSED NEW PRODUCTIVE ZONE. GIVE BLOWOUT PREVENTER PROGRAM, IF ANY.

I hereby certify that the information above is true and complete to the best of my knowledge and belief.

SIGNED <u>B. Hobbs</u>	TITLE <u>Drilling &amp; Production Manager</u>	DATE <u>March 28, 1983</u>
------------------------	--	----------------------------

(This space for State Use)  
ORIGINAL SIGNED BY EDDIE SEAY

PROVED BY <u>OIL &amp; GAS INSPECTOR</u>	DATE <u>MAR 31 1983</u>
--	-------------------------

CONDITIONS OF APPROVAL, IF ANY:

RECEIVED  
MAR 30 1983  
O.C.D.  
HOBBS OFFICE

NEW MEXICO OIL CONSERVATION COMMISSION  
WELL LOCATION AND ACREAGE DEDICATION PLAT

Form C-102  
Supersedes C-128  
Effective 1-1-65

All distances must be from the outer boundaries of the Section.

Operator <b>READ &amp; STEVENS, INC.</b>		Lease <b>Belco State</b>		Well No. <b>1</b>
Unit Letter <b>F</b>	Section <b>5</b>	Township <b>10 South</b>	Range <b>33 East</b>	County <b>Lea</b>

Actual Footage Location of Well:

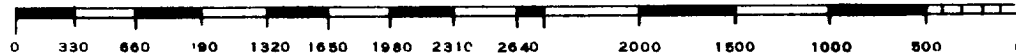
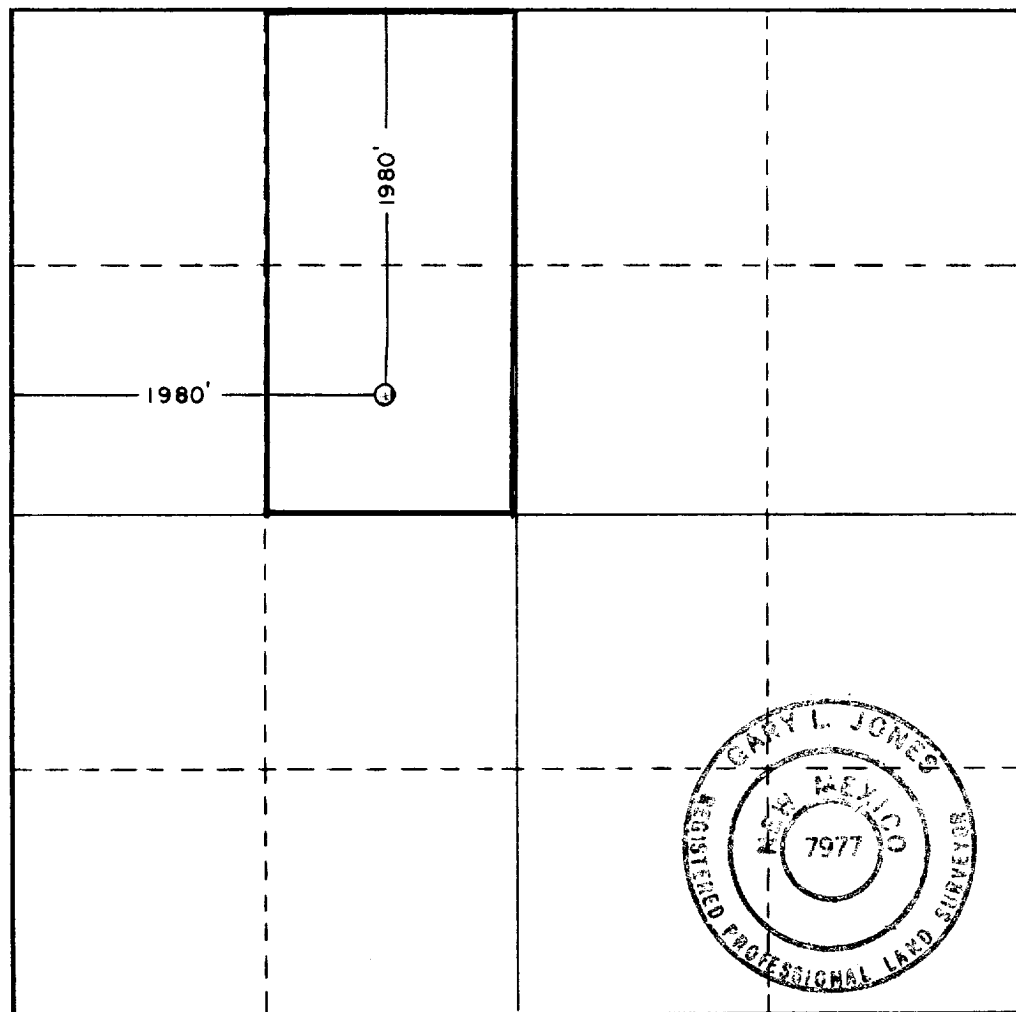
1980 feet from the North line and 1980 feet from the West line			
Ground Level Elev. <b>4189.1</b>	Producing Formation <b>San Andres</b>	Pool <b>Flying "M" San Andres</b>	Dedicated Acreage: <b>80</b> Acres

1. Outline the acreage dedicated to the subject well by colored pencil or hatchure marks on the plat below.
2. If more than one lease is dedicated to the well, outline each and identify the ownership thereof (both as to working interest and royalty).
3. If more than one lease of different ownership is dedicated to the well, have the interests of all owners been consolidated by communitization, unitization, force-pooling, etc?

☐ Yes ☐ No If answer is "yes," type of consolidation \_\_\_\_\_

If answer is "no," list the owners and tract descriptions which have actually been consolidated. (Use reverse side of this form if necessary.) \_\_\_\_\_

No allowable will be assigned to the well until all interests have been consolidated (by communitization, unitization, forced-pooling, or otherwise) or until a non-standard unit, eliminating such interests, has been approved by the Commission.



CERTIFICATION

I hereby certify that the information contained herein is true and complete to the best of my knowledge and belief.

*Susie Russell*

Name

Susie Russell

Position

Authorized Agent

Company

Read & Stevens, Inc.

Date

March 28, 1983

I hereby certify that the well location shown on this plat was plotted from field notes of actual surveys made by me or under my supervision, and that the same is true and correct to the best of my knowledge and belief.

Date Surveyed

March 25, 1983

Registered Professional Engineer and/or Land Surveyor

*David Jones*

Certificate No.

7977

RECEIVED  
MAR 30 1983  
FEDERAL BUREAU OF INVESTIGATION  
U.S. DEPARTMENT OF JUSTICE

412