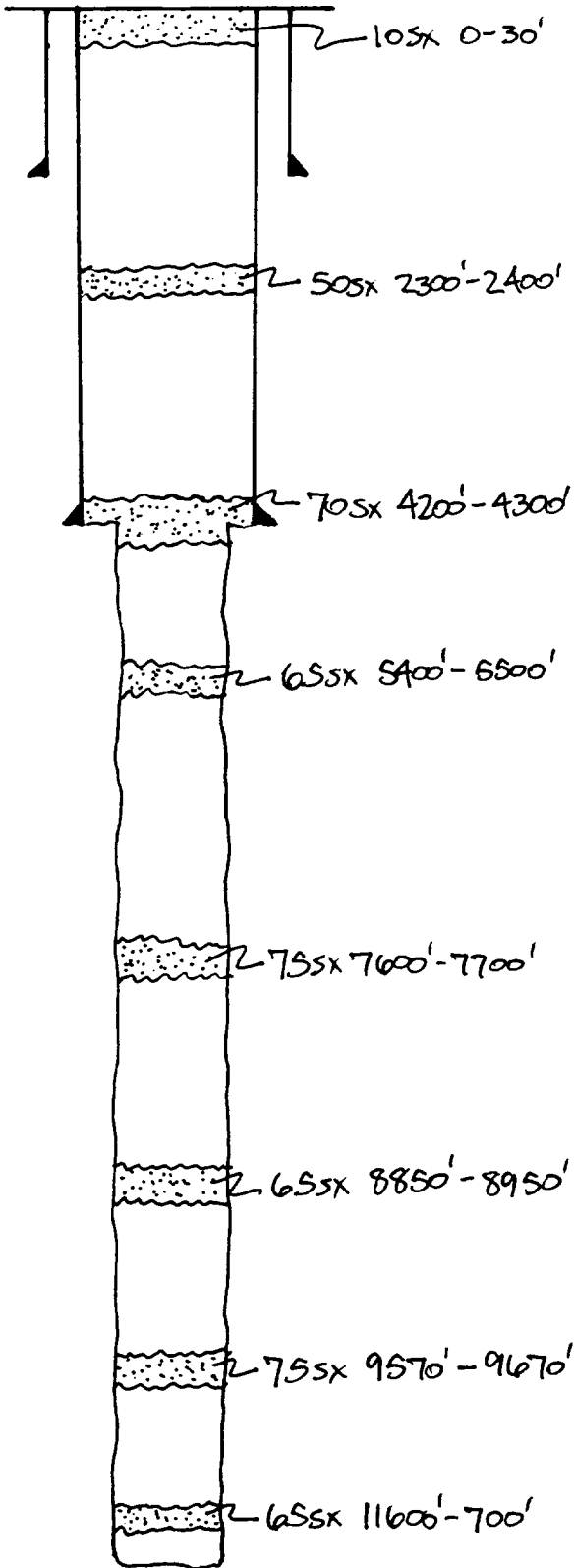


OPERATOR: Saga Petroleum LLC of CO	LOCATION: Sec. 27, T9S, R36E, Lea County, NM
Lease: U.D. Sawyer #10	Unit P, 1000.5' FEL + 986.1' FSL



13 3/8 " casing set at 260 ' with 365 sx of cement.

Hole Size: 17 1/2 ". TOC @ Surf. by Circ.

9 5/8 " casing set at 4250 ' with 1540 sx of cement.

Hole Size: 12 3/4 ". TOC @ Surf. by Circ.

N/A " casing set at _____ ' with _____ sx of cement.

Hole Size: 7 7/8 ". 1st Stage: TOC @ _____ ' by _____.
2nd Stage: TOC @ _____ ' by _____.

Total depth 12190 ' DV Tool @ N/A '.