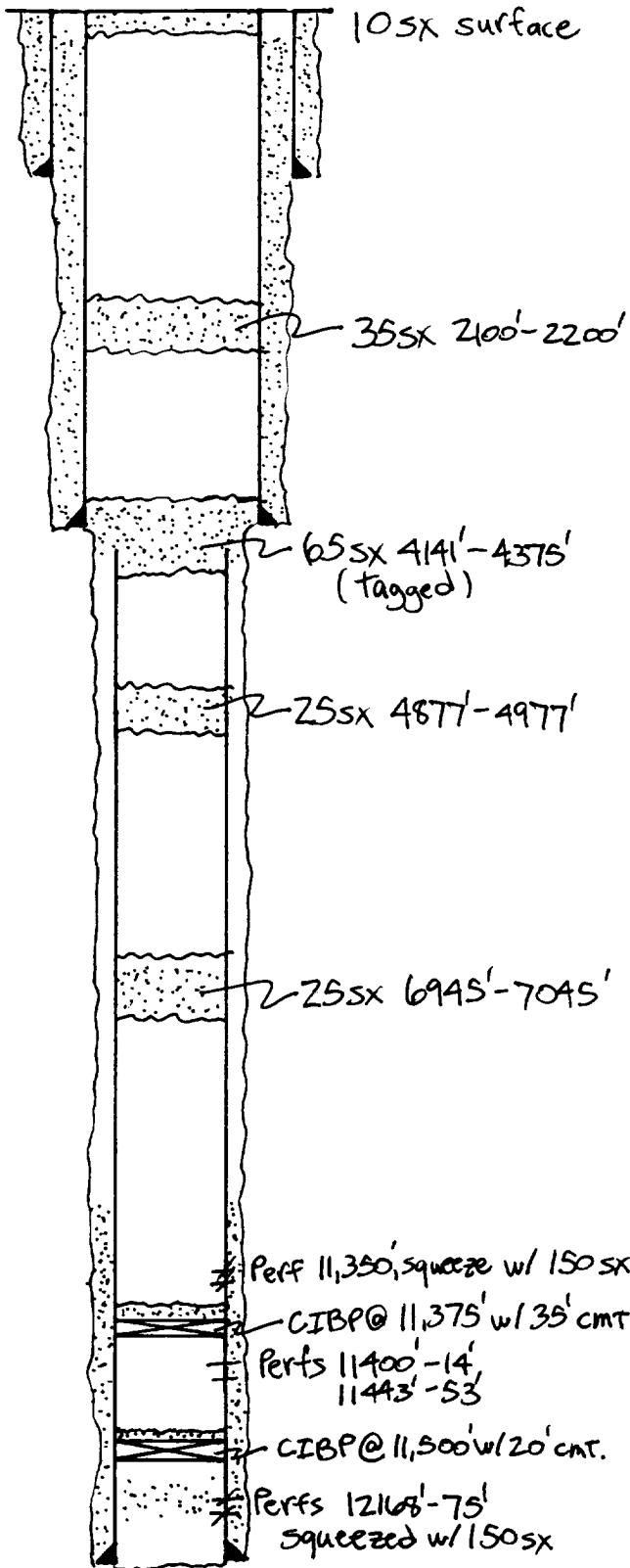


OPERATOR: Saga Petroleum LLC of CO	LOCATION: Sec. 27, T9S, R36E, Lea County, NM
Lease: U.D. Sawyer #5	Unit O, 330' FSL + 2310' FEL



13³/₈ " casing set at 235 ' with 225 sx of cement.

Hole Size: 17¹/₄ ". TOC @ surf by circ.

8⁵/₈ " casing set at 4186 ' with 1035 sx of cement.

Hole Size: 11 ". TOC @ 102' by TS

5¹/₂ " casing cut and pulled at 4325'

5¹/₂ " casing set at 2177 ' with 225 sx of cement.

Hole Size: 7⁷/₈ ". 1st Stage: TOC @ 11200 ' by calc.
2nd Stage: TOC @ _____ ' by _____

Total depth 2180 DV Tool @ N/A '.