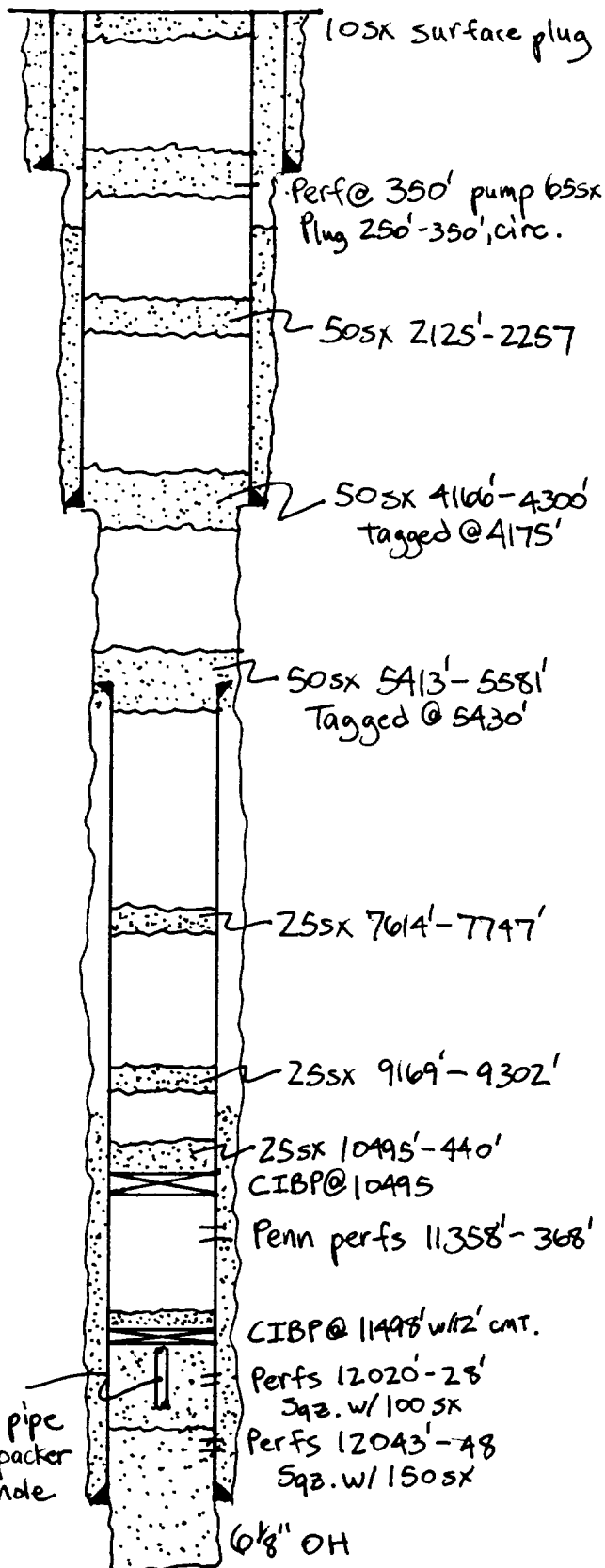


OPERATOR: Saga Petroleum LLC of CO	LOCATION: Sec. 27, T9S, R36E, Lea County, NM
Lease: U.D. Sawyer #9	Unit H, 1980' FNL + 990' FEL



1 3/8 " casing set at 273 ' with 275 sx of cement.

Hole Size: 1 7/2 ". TOC @ surf by circ.

9 5/8 " casing set at 4240 ' with 1440 sx of cement.

Hole Size: 12 1/4 ". TOC @ 1520' by TS.

7 " casing cut and pulled at 5540'

7 " casing set at 12049' with 250 sx of cement.

Hole Size: 8 3/4 ". 1st Stage: TOC @ 9400' by TS.
2nd Stage: TOC @ _____ ' by _____.

Total depth 12068' DV Tool @ N/A '.