

NEW MEXICO OIL CONSERVATION COMMISSION  
WELL LOCATION AND ACREAGE DEDICATION PLAT

Form C-102  
Supersedes C-128  
Effective 1-1-65

All distances must be from the outer boundaries of the Section

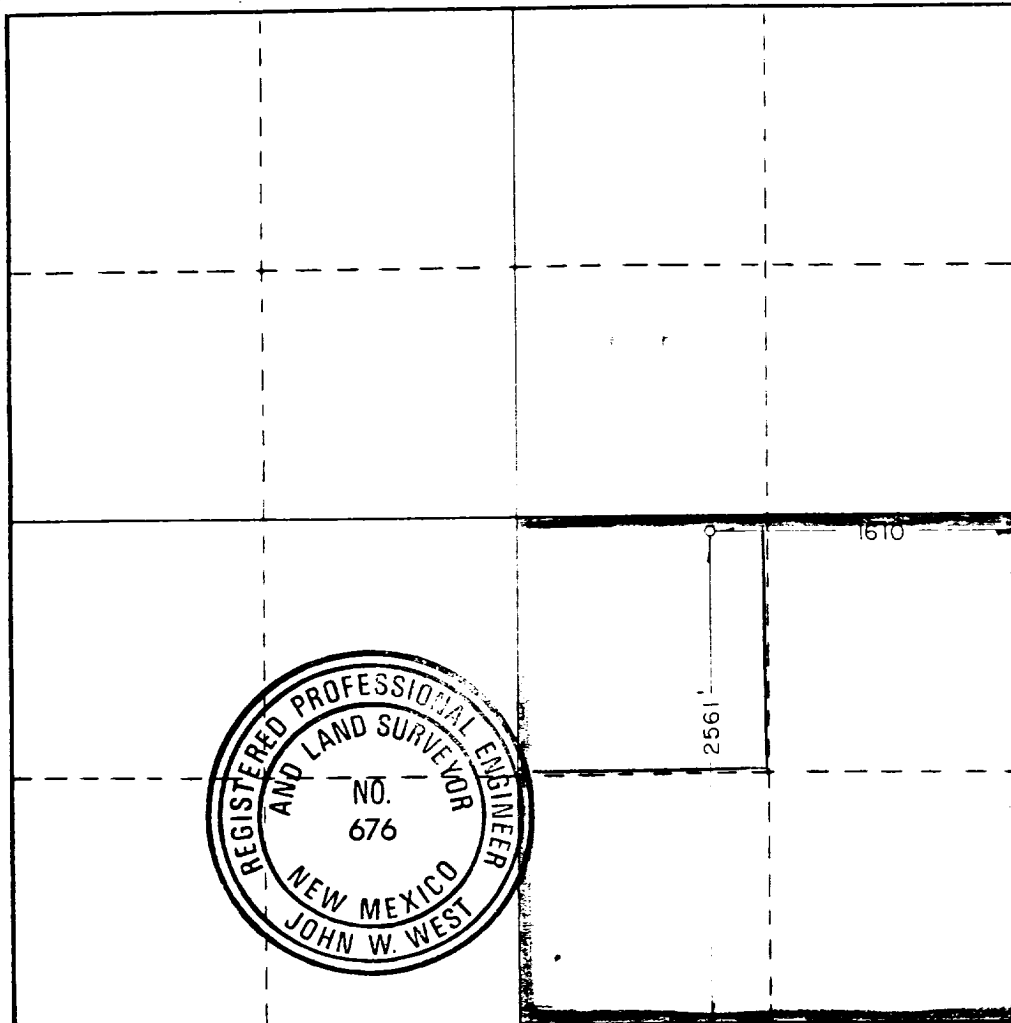
Operator SUN Exploration & Production Co.		Lease U. D. SAWYER		Well No. 11
Unit Letter J	Section 27	Township 9 SOUTH	Range 36 EAST	County LEA
Actual Footage Location of Well: 2561 feet from the SOUTH line and 1610 feet from the EAST line				
Ground Level Elev. 4026.3	Producing Formation Granite Wash	Pool Wildcat	Dedicated Acreage: 40 <del>100</del> Acres	

1. Outline the acreage dedicated to the subject well by colored pencil or hachure marks on the plat below.
2. If more than one lease is dedicated to the well, outline each and identify the ownership thereof (both as to working interest and royalty).
3. If more than one lease of different ownership is dedicated to the well, have the interests of all owners been consolidated by communitization, unitization, force-pooling, etc?

☐ Yes ☐ No If answer is "yes," type of consolidation \_\_\_\_\_

If answer is "no," list the owners and tract descriptions which have actually been consolidated. (Use reverse side of this form if necessary.) \_\_\_\_\_

No allowable will be assigned to the well until all interests have been consolidated (by communitization, unitization, forced-pooling, or otherwise) or until a non-standard unit, eliminating such interests, has been approved by the Commission.



CERTIFICATION

I hereby certify that the information contained herein is true and complete to the best of my knowledge and belief.

*Dee Ann Kemp*

Name

Dee Ann Kemp

Position

Associate Accountant

Company

Sun Exploration & Production Co

Date

July 30, 1984

I hereby certify that the well location shown on this plat was plotted from field notes of actual surveys made by me or under my supervision, and that the same is true and correct to the best of my knowledge and belief.

Date Surveyed

JUNE 28, 1984

Registered Professional Engineer and/or Land Surveyor

*John W. West*

Certificate No. JOHN W. WEST, 676

RONALD J. EIDSON, 3239

0 330 660 990 1320 1650 1980 2310 2640 2000 1800 1000 500 0

RECEIVED

AUG 2 1984

317