

DISTRICT I  
1625 N. French Dr., Hobbs, NM 88240

DISTRICT II  
811 South First, Artesia, NM 88210

DISTRICT III  
1000 Rio Brazos Rd., Aztec, NM 87410

DISTRICT IV  
2040 South Pacheco, Santa Fe, NM 87501

State of New Mexico  
Energy, Minerals and Natural Resources Department

OIL CONSERVATION DIVISION  
PO BOX 2088  
Santa Fe, NM 87504-2088

Form C-101  
Revised March 17, 1999  
Instructions on back  
Submit to appropriate District Office  
State Lease - 6 Copies  
Fee Lease - 5 Copies

☐ AMENDED REPORT

**APPLICATION FOR PERMIT TO DRILL, RE-ENTER, DEEPEN, PLUGBACK, OR ADD A ZONE**

<sup>1</sup> Operator Name and Address Yates Petroleum Corporation 105 South Fourth Street Artesia, New Mexico 88210		<sup>2</sup> OGRID Number 025575
		<sup>3</sup> API Number 30-025-29071
<sup>4</sup> Property Code	<sup>5</sup> Property Name Isaiah "BBA" State	<sup>6</sup> Well No. 1

**<sup>7</sup> Surface Location**

UL or lot no.	Section	Township	Range	Lot Idn	Feet from the	North/South Line	Feet from the	East/West Line	County
M	14	9S	32E		330	South	330	West	Lea

**<sup>8</sup> Proposed Bottom Hole Location If Different From Surface**

UL or lot no.	Section	Township	Range	Lot Idn	Feet from the	North/South Line	Feet from the	East/West Line	County
<sup>9</sup> Proposed Pool 1 Wildcat Mississippian					<sup>10</sup> Proposed Pool 2				

<sup>11</sup> Work Type Code E	<sup>12</sup> Well Type Code G	<sup>13</sup> Cable/Rotary R	<sup>14</sup> Lease Type Code S	<sup>15</sup> Ground Level Elevation 4218'
<sup>16</sup> Multiple No	<sup>17</sup> Proposed Depth 10,965'	<sup>18</sup> Formation Austin Cycle	<sup>19</sup> Contractor Not Determined	<sup>20</sup> Spud Date ASAP

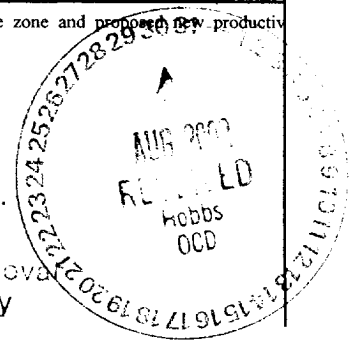
**<sup>21</sup> Proposed Casing and Cement Program**

Hole Size	Casing Size	Casing weight/feet	Setting Depth	Sacks of Cement	Estimated TOC
17 1/2"	13 3/8	48#	400'-in place	425 sx	Circulated
11"	8 5/8"	24# & 32#	3800'-in place	900 sx	Circulated
7 7/8"	5 1/2"	17#	2800'-13650'in place	410sx	TOC
7 7/8"	5 1/2"	17#	Tie-in @ 3827'	250 sx	TOC-2425'

<sup>22</sup> Describe the proposed program. If this application is to DEEPEN or PLUG BACK give the data on the present productive zone and proposed new productive zone. Describe the blowout prevention program, if any. Use additional sheets if necessary.

See Attached Sheet --- Non-Standard Location is being applied for administratively.

Permit Expires 1 Year From Approval  
Date Unless Drilling Underway  
Re-Entry



<sup>23</sup> I hereby certify that the information given above is true and complete to the best of my knowledge and belief. Signature: <i>Clifton R. May</i>		<b>OIL CONSERVATION DIVISION</b>	
Printed name: Clifton R. May		Approved by: ORIGINAL SIGNED BY: PAUL F. KAUTZ	
Title: Regulatory Agent		Title: PETROLEUM ENGINEER	
Date: 08/28/02		Approval Date: OCT 24 2002	
Phone: (505) 748-1471		Expiration Date:	
		Conditions of Approval Attached <input type="checkbox"/>	

*mp*

**1625 N. French Dr., Hobbs, NM 88240**

## District II

**811 South First, Artesia, NM 88210**

### District III

**1000 Rio Brazos Rd., Aztec, NM 87410**

District IV

**1220 S. St. Francis Dr., Santa Fe, NM 87505**

State of New Mexico  
Energy, Minerals & Natural Resources Department

OIL CONSERVATION DIVISION  
1220 South St. Francis Dr.  
Santa Fe, NM 87505

Form C-102  
Revised August 15, 2000

Submit to Appropriate District Office  
State Lease - 4 Copies  
Fee Lease - 3 Copies

☐ AMENDED REPORT

## WELL LOCATION AND ACREAGE DEDICATION PLAT

<sup>1</sup> API Number <b>30-015-29071</b>		<sup>2</sup> Pool Code	<sup>3</sup> Pool Name <b>Wildcat Mississippian</b>	
<sup>4</sup> Property Code	<sup>5</sup> Property Name <b>ISAIAH "BBA" STATE</b>			<sup>6</sup> Well Number <b>1</b>
<sup>7</sup> OGRID No. <b>025575</b>	<sup>8</sup> Operator Name <b>Yates Petroleum Corporation</b>			<sup>9</sup> Elevation <b>4326'</b>

## <sup>10</sup> Surface Location

Surface Location									
UL or lot no.	Section	Township	Range	Lot Idn	Feet from the	North/South line	Feet from the	East/West line	County
M	14	9S	32E		330	South	330	West	Lea

<sup>11</sup> Bottom Hole Location If Different From Surface

UL or lot no.	Section	Township	Range	Lot Idn	Feet from the	North/South line	Feet from the	East/West line	County
12	11	11							

<sup>12</sup> Dedicated Acres <b>320-W/2</b>	<sup>13</sup> Joint or Infill	<sup>14</sup> Consolidation Code	<sup>15</sup> Order No. <i>154-2051-A</i>
-------------------------------------------------	-------------------------------	----------------------------------	----------------------------------------------

NO ALLOWABLE WILL BE ASSIGNED TO THIS COMPLETION UNTIL ALL INTERESTS HAVE BEEN CONSOLIDATED OR A  
NON-STANDARD UNIT HAS BEEN APPROVED BY THE DIVISION

<div>6</div> <div>VO-6117</div> <div>330'</div> <div>330'</div>		<div>17 OPERATOR CERTIFICATION</div> <div>I hereby certify that the information contained herein is true and complete to the best of my knowledge and belief.</div> <div>Clifton R. May</div> <div>Signature</div> <div>Clifton R. May</div> <div>Printed Name</div> <div>Regulatory Agent</div> <div>Title</div> <div>8/28/2002</div> <div>Date</div>	
		<div>18 SURVEYOR CERTIFICATION</div> <div>I hereby certify that the well location shown on this plat was plotted from field notes of actual surveys made by me or under my supervision, and that the same is true and correct to the best of my belief.</div> <div>SEE ORIGINAL PLAT</div> <div>Date of Survey</div> <div>Signature and Seal of Professional Surveyor:</div> <div>CLIFFTON R. MAY Hobbs OCD</div> <div>Certificate Number</div>	

NEW MEXICO OIL CONSERVATION COMMISSION  
WELL LOCATION AND ACREAGE DEDICATION PLAT

Form C-102  
Supersedes C-128  
Effective 1-1-65

All distances must be from the outer boundaries of the Section.

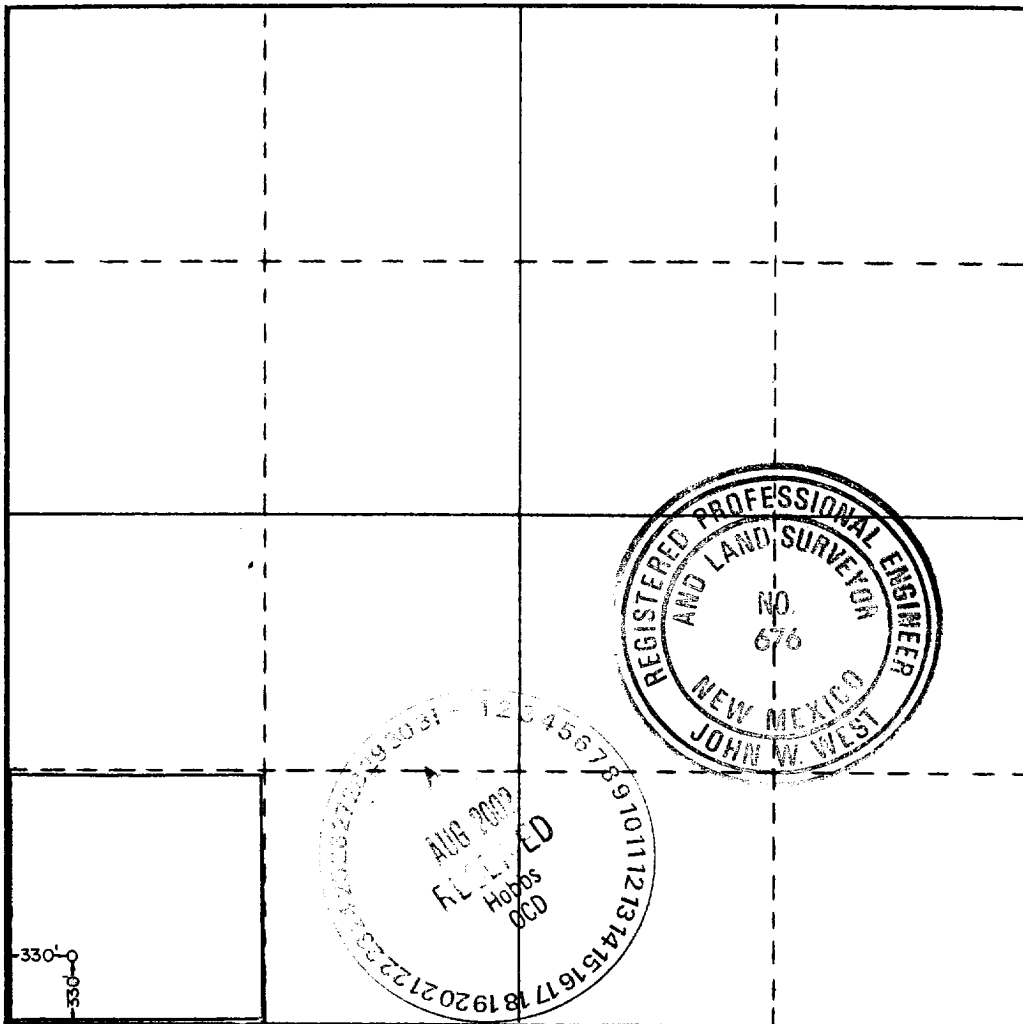
Operator SPENCE ENERGY CO.			Lease STATE 14		Well No. 1
Unit Letter M	Section 14	Township 9S	Range 32E	County LEA	
Actual Footage Location of Well: 330 feet from the SOUTH line and 330 feet from the WEST line					
Ground Level Elev. 4326.2	Producing Formation Devonian	Pool S.R.R.		Dedicated Acreage: 80 40 Acres	

1. Outline the acreage dedicated to the subject well by colored pencil or hachure marks on the plat below.
2. If more than one lease is dedicated to the well, outline each and identify the ownership thereof (both as to working interest and royalty).
3. If more than one lease of different ownership is dedicated to the well, have the interests of all owners been consolidated by communitization, unitization, force-pooling, etc?

☐ Yes ☐ No If answer is "yes," type of consolidation \_\_\_\_\_

If answer is "no," list the owners and tract descriptions which have actually been consolidated. (Use reverse side of this form if necessary.) \_\_\_\_\_

No allowable will be assigned to the well until all interests have been consolidated (by communitization, unitization, forced-pooling, or otherwise) or until a non-standard unit, eliminating such interests, has been approved by the Commission.



CERTIFICATION

I hereby certify that the information contained herein is true and complete to the best of my knowledge and belief.

Name  
L. O. Spence

Position  
President

Company  
Spence Energy Company

Date  
12/13/84

I hereby certify that the well location shown on this plat was plotted from field notes of actual surveys made by me or under my supervision, and that the same is true and correct to the best of my knowledge and belief.

Date Surveyed  
11/29/84

Registered Professional Engineer and/or Land Surveyor

Certificate No. JOHN W. WEST, 676  
RONALD J. EIDSON, 3239

YATES PETROLEUM CORPORATION

Isaiah "BBA" State #1 Re-entry

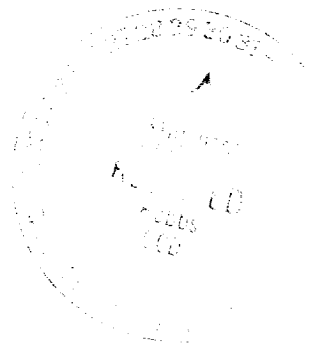
330' FSL and 330' FWL

Section 14-T9S-R32E

Lea County, New Mexico

Lease VO-6117

Yates' plan is to re-enter this well bore with a pulling unit and a reverse unit to drill out the cement plugs in the 8 5/8" casing and the 7 7/8" open hole to the top of the 5 1/2" casing stub as it was cut off at 3827'. The 5 1/2" casing will be repaired and tied back to surface and cemented 250 sacks of cement to bring the top of cement behind the 8 5/8" casing to approximately 2425'. After the casing has been repaired, the plugs in the 5 1/2" casing will be clean out to the plug over the Devonian at 10965'. Then the well will be completed with a pulling unit in the Austin Cycle within the interval 10350' to 10800' (to be determined after logs have been run). The mud program will be 9.2 to 9.5 ppg brine water with viscosity of 55-70 cp. A 5000# BOPE will be nipped up on the 8 5/8" casing.



Well Name: State 14 No. 1 Field: \_\_\_\_\_

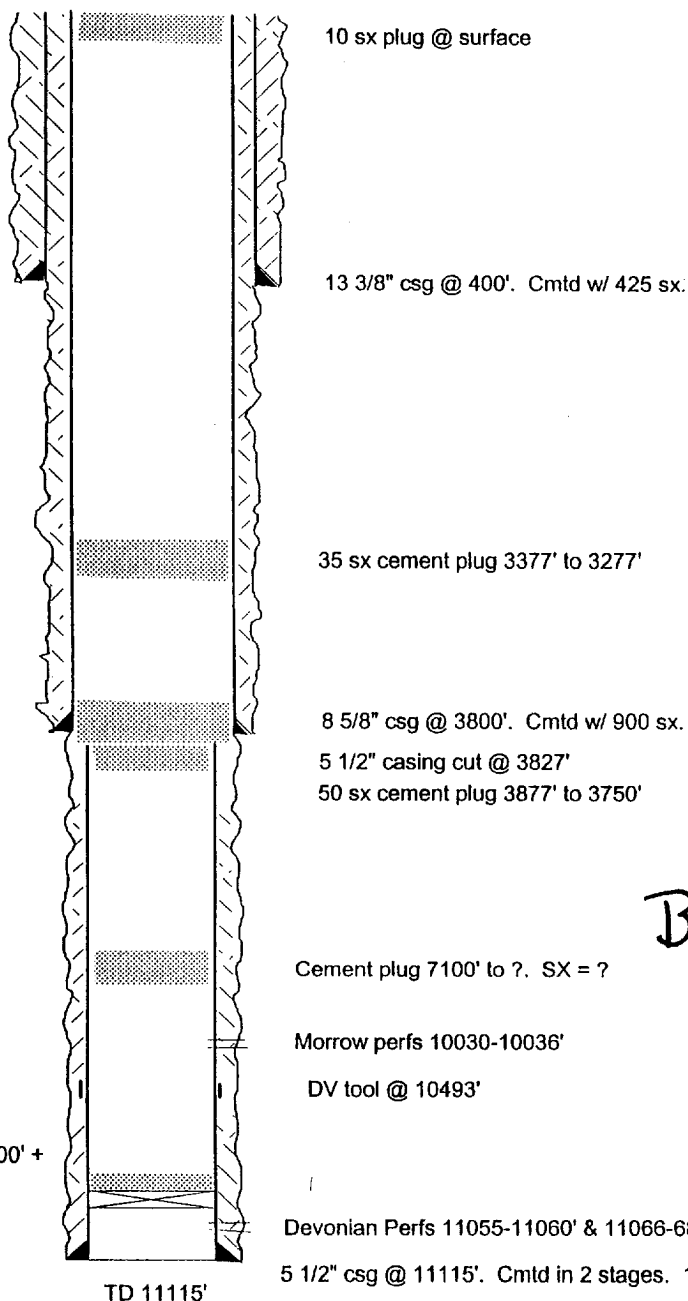
Location: 330' FSL & 330' FWL Sec. 14-9S-32E Lea Co, NM

GL: 4326' Zero: \_\_\_\_\_ AGL: \_\_\_\_\_ KB: \_\_\_\_\_

Spud Date: 1/18/85 Completion Date: \_\_\_\_\_

Comments: Well drilled by Spenc Energy Co. 1985. Completed in Devonian and  
Morrow intervals. P&A'd in May 1987

Casing Program	
Size/Wt/Grade/Conn	Depth Set
13 3/8" 48#	400'
8 5/8" 24 & 32# J55	3800'
5 1/2" 17# N80	11115'



TOPS:

Anhydrite	1600'
Salt	2170'
Yates	2260'
San Andres	3535'
Glorieta	4860'
Tubb	6305'
Abo	7175'
Wolfcamp	8183'
3 Brothers	8600'
Atoka	9800'
Morrow	9990'
Miss	10350'
Woodford	10883'
Devonian	11053'

BEFORE



SKETCH NOT TO SCALE

DATE: \_\_\_\_\_

Well Name: State 14 No. 1 Field: \_\_\_\_\_

Location: 330' FSL & 330' FWL Sec. 14-9S-32E Lea Co, NM

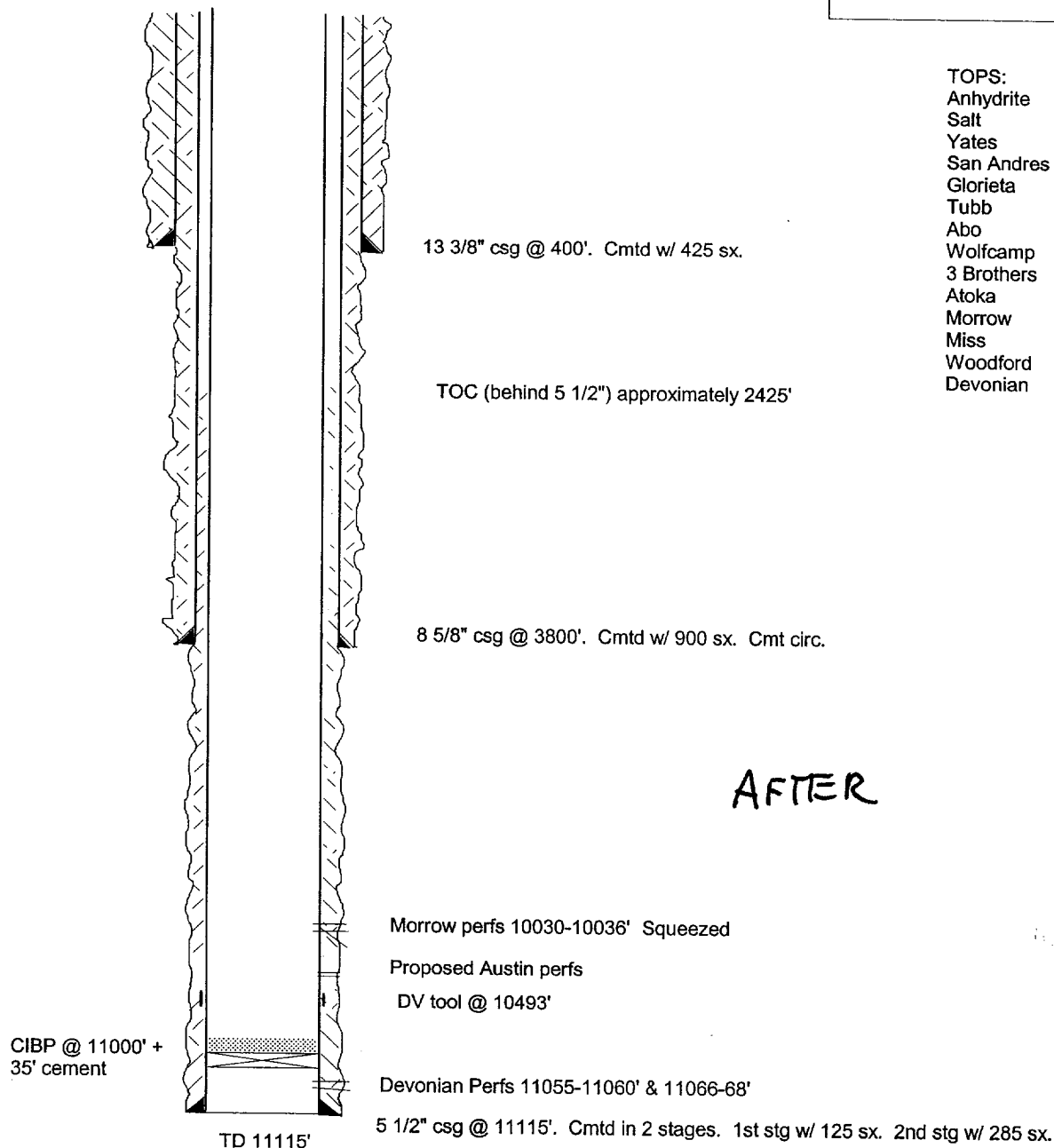
GL: 4326' Zero: \_\_\_\_\_ AGL: \_\_\_\_\_ KB: \_\_\_\_\_

Spud Date: 1/18/85 Completion Date: \_\_\_\_\_

Comments: Well drilled by Spenc Energy Co. 1985. Completed in Devonian and  
Morrow intervals. P&A'd in May 1987

Casing Program	
Size/Wt/Grade/Conn	Depth Set
13 3/8" 48#	400'
8 5/8" 24 & 32# J55	3800'
5 1/2" 17# N80	11115'

TOPS:  
Anhydrite 1600'  
Salt 2170'  
Yates 2260'  
San Andres 3535'  
Glorieta 4860'  
Tubb 6305'  
Abo 7175'  
Wolfcamp 8183'  
3 Brothers 8600'  
Atoka 9800'  
Morrow 9990'  
Miss 10350'  
Woodford 10883'  
Devonian 11053'

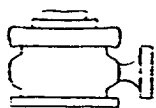


AFTER



SKETCH NOT TO SCALE

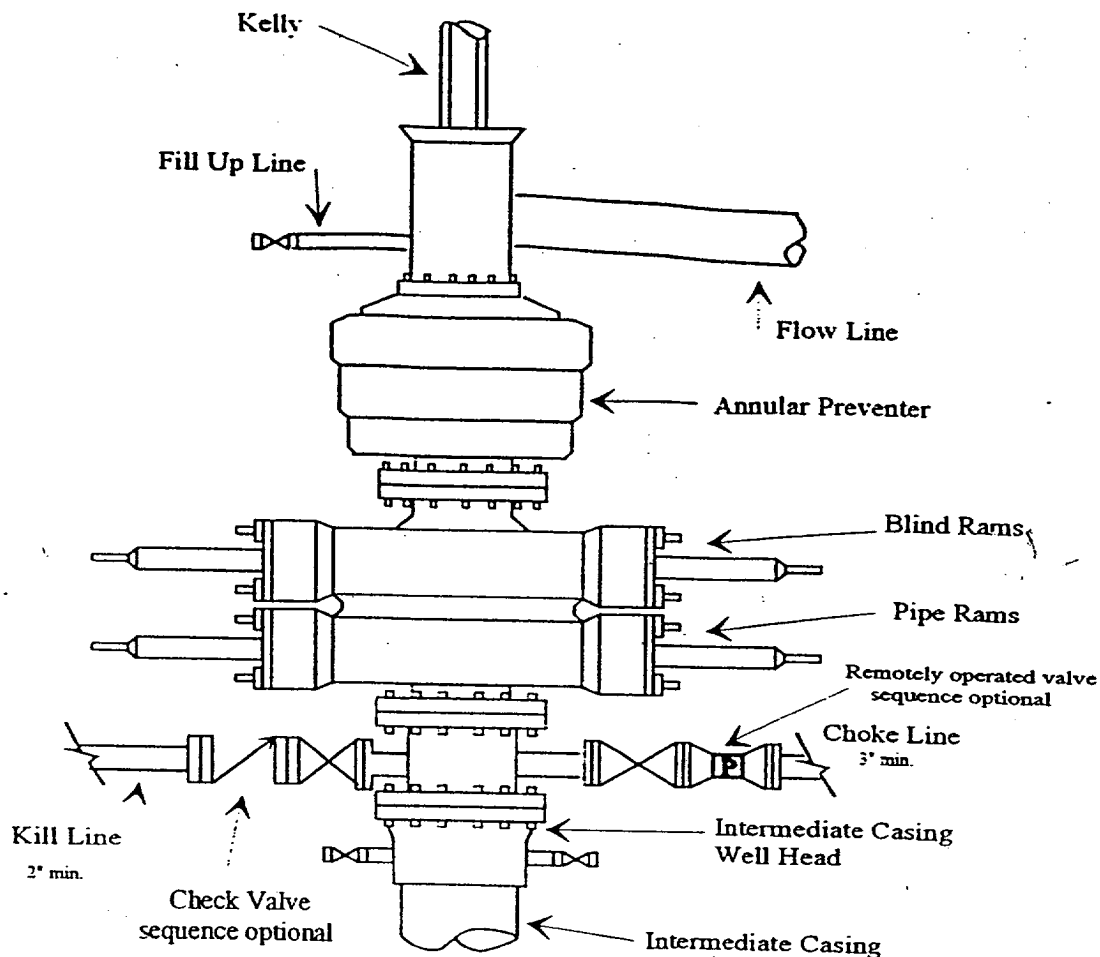
DATE: \_\_\_\_\_



# Yates Petroleum Corporation

BOP-4

## Typical 5,000 psi Pressure System Schematic Annular with Double Ram Preventer Stack



Typical 5,000 psi choke manifold assembly with at least these minimum features

