

MEXICO OIL CONSERVATION COMMISSION
WELL LOCATION AND ACREAGE DEDICATION PLAT

Form O-102
 Supersedes O-1
 Effective 1-1-65

All distances must be from the outer boundaries of the Section.

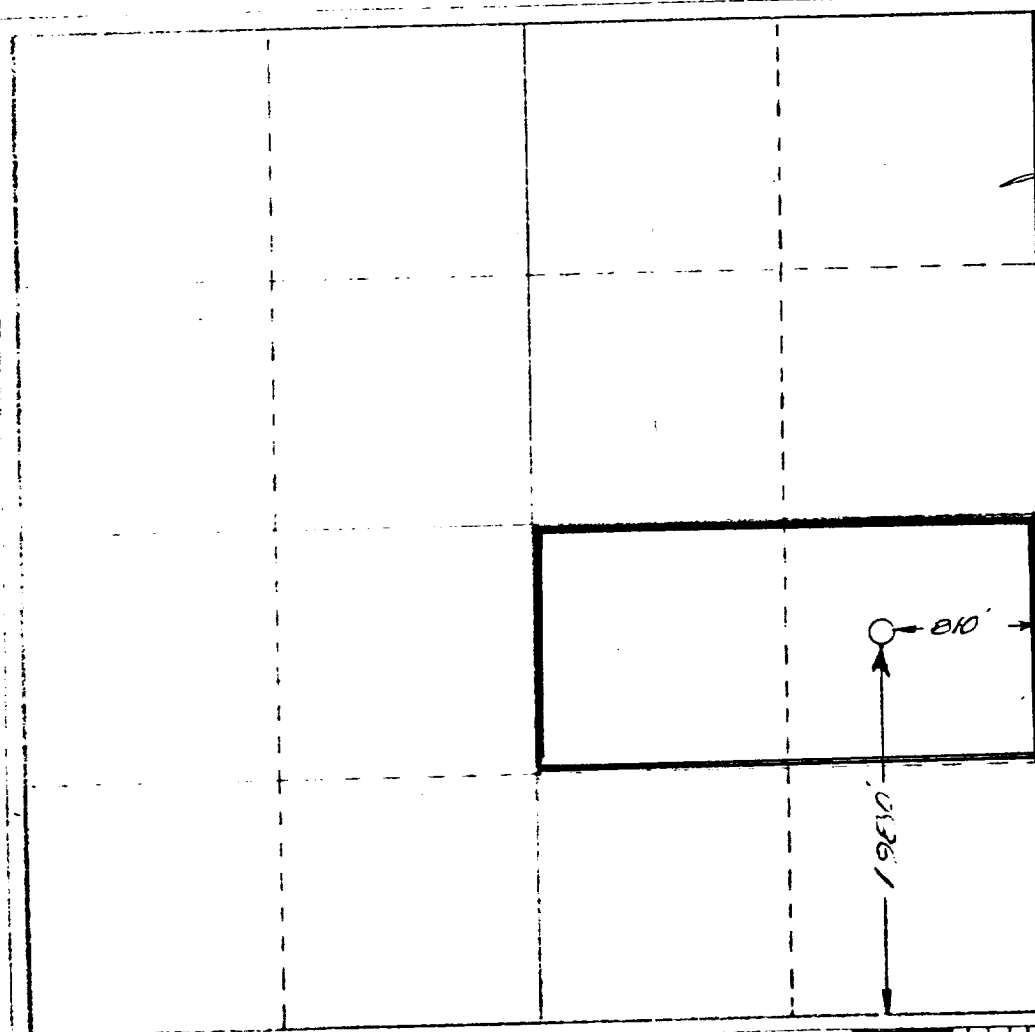
STALLWORTH OIL AND GAS			Lease Kellahtn State		Well No. 1
Section 14	Township 9 S.	Range 32 E.	County Lea		
Section 14 is located 610 feet from the East line and 1980 feet from the South line. Section Number 4328 Producing Formation Bough "C" Pool South Flying M (Penn) Dedicated Acreage: 80 Acres					

- 1 Outline the acreage dedicated to the subject well by colored pencil or hachure marks on the plat below.
- 2 If more than one lease is dedicated to the well, outline each and identify the ownership thereof (both as to working interest and royalty). **Not applicable.**
- 3 If more than one lease of different ownership is dedicated to the well, have the interests of all owners been consolidated by communitization, unitization, force-pooling, etc?

☒ Yes ☐ No If answer is "yes," type of consolidation **SE/4 of Section 14 is a common lease, no communitization required.**

If answer is "no," list the owners and tract descriptions which have actually been consolidated. (Use reverse side of this form if necessary.) _____

No allowable will be assigned to the well until all interests have been consolidated (by communitization, unitization, force-pooling, or otherwise) or until a non-standard unit, eliminating such interests, has been approved by the Commission.



CERTIFICATION

I hereby certify that the information contained herein is true and complete to the best of my knowledge and belief.

[Signature]
 Name
Field Superintendent

Position
Stallworth Oil & Gas

Company
January 22, 1974

Date

I hereby certify that the well location shown on this plat was plotted from field notes of actual surveys made by me or under my supervision, and that the same is true and correct to the best of my knowledge and belief.

Date Surveyed
January 16, 17, 1974

Registered Professional Engineer and/or Land Surveyor

[Signature]
 Certificate No.

3640

[Handwritten mark]