

**MEXICO OIL CONSERVATION COMMISSION
WELL LOCATION AND ACREAGE DEDICATION PLAT**

Form C-102
Supersedes C-128
Effective 1-1-65

All distances must be from the outer boundaries of the Section

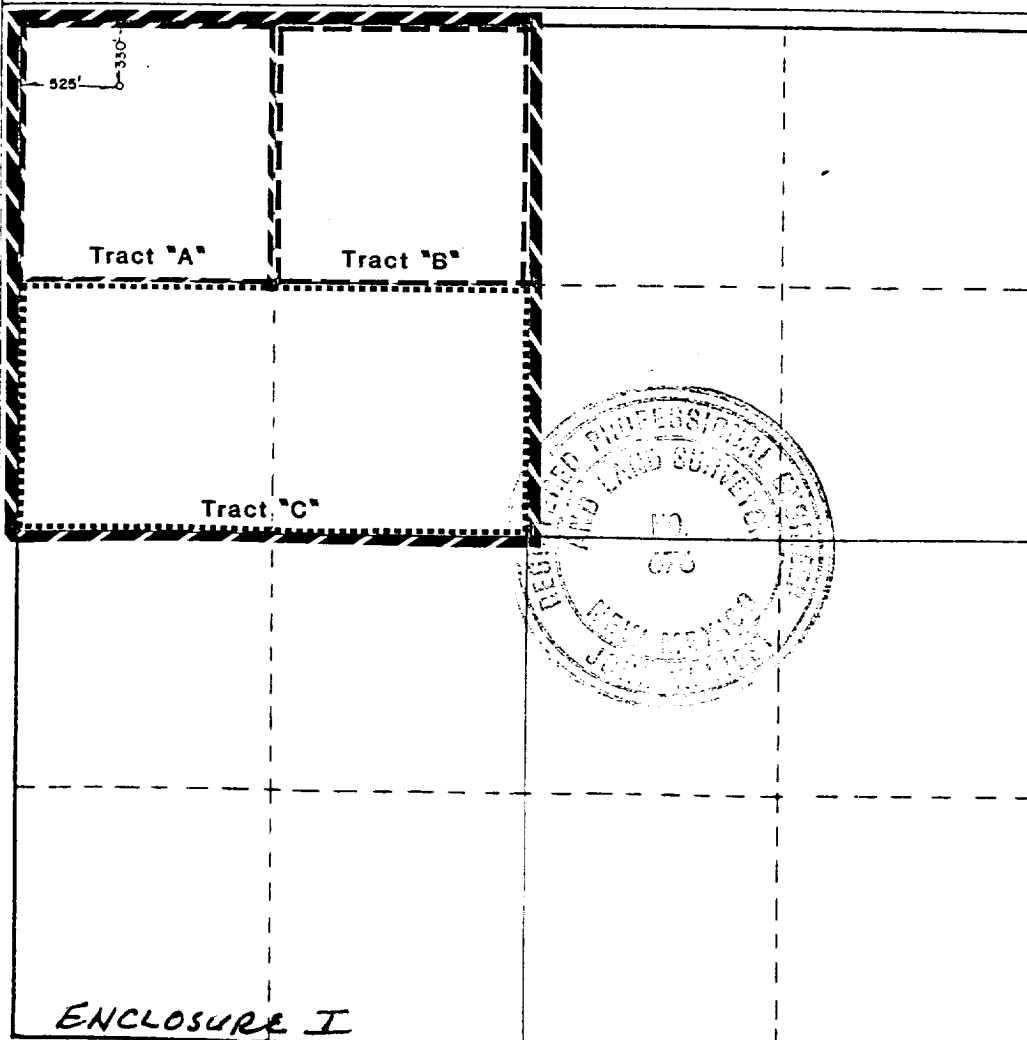
Operator SAMSON RESOURCES CO.			Lease Price Federal		Well No. 1
Unit Letter D	Section 8	Township 9S	Range 34E	County LEA	
Actual Footage Location of Well: 330 feet from the NORTH line and 525' feet from the WEST line					
Ground Level Elev. 4299.3	Producing Formation Penn Bough "C"		Pool Vada Penn	Dedicated Acreage: 160 Acres	

1. Outline the acreage dedicated to the subject well by colored pencil or hachure marks on the plat below.
2. If more than one lease is dedicated to the well, outline each and identify the ownership thereof (both as to working interest and royalty): **See Back Of Page.**
3. If more than one lease of different ownership is dedicated to the well, have the interests of all owners been consolidated by communitization, unitization, force-pooling, etc?

☒ Yes ☐ No If answer is "yes," type of consolidation **Force Pooling (Case No. 8421)**

If answer is "no," list the owners and tract descriptions which have actually been consolidated. (Use reverse side of this form if necessary.) _____

No allowable will be assigned to the well until all interests have been consolidated (by communitization, unitization, forced-pooling, or otherwise) or until a non-standard unit, eliminating such interests, has been approved by the Commission.



CERTIFICATION

I hereby certify that the information contained herein is true and complete to the best of my knowledge and belief.

Charles Watkins

Name

Charles Watkins

Position

Division Drilling Supt.

Company

Samson Resources Company

Date

December 17, 1984

I hereby certify that the well location shown on this plat was plotted from field notes of actual surveys made by me or under my supervision, and that the same is true and correct to the best of my knowledge and belief.

Date Surveyed

11/14/84

Registered Professional Engineer
and/or Land Surveyor

John W. West

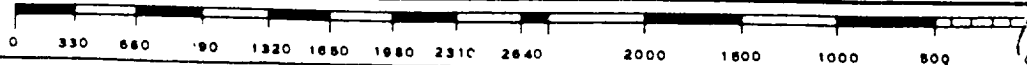
Certificate No. **JOHN W. WEST,**

676

RONALD J. EIDSON,

3239

ENCLOSURE I



	<u># of Acres</u>	<u>Mineral Owner</u>	<u>Leasehold Owner</u>
TRACT A: NW/4 NW/4	40	United States of America	Sun Exploration and Productio Company
TRACT B: NE/4 NW/4	40	United States of America	Samson Resources Company
TRACT C: S/2 NW/4	6.67	Virginia Cox	Samson Resources Company
	6.67	John G. King	Samson Resources Company
	6.67	Allen H. King	Samson Resources Company
	8.0	Heritage Resources, a general partnership	Unleased <i>leased to SEC</i>
	10.66	Petroleum Corporation of Texas	Samson Resources Company
	.5	Donald G. Gourley	Delaware-Apache Corp.
	1.5	R. A. Turney	" " "
	18.0	Roy G. Barton	" " "
	<u>21.33</u>	Southern Minerals Corp. <i>(now Sun Expl.)</i>	Unleased
Total	160.00		

RECEIVED
MAR 13 1985
HOBBS OFFICE