

**NEW MEXICO OIL CONSERVATION COMMISSION
WELL LOCATION AND ACREAGE DEDICATION AT**

Form C-102
Supersedes C-128
Effective 1-1-65

All distances must be from the outer boundaries of the Section

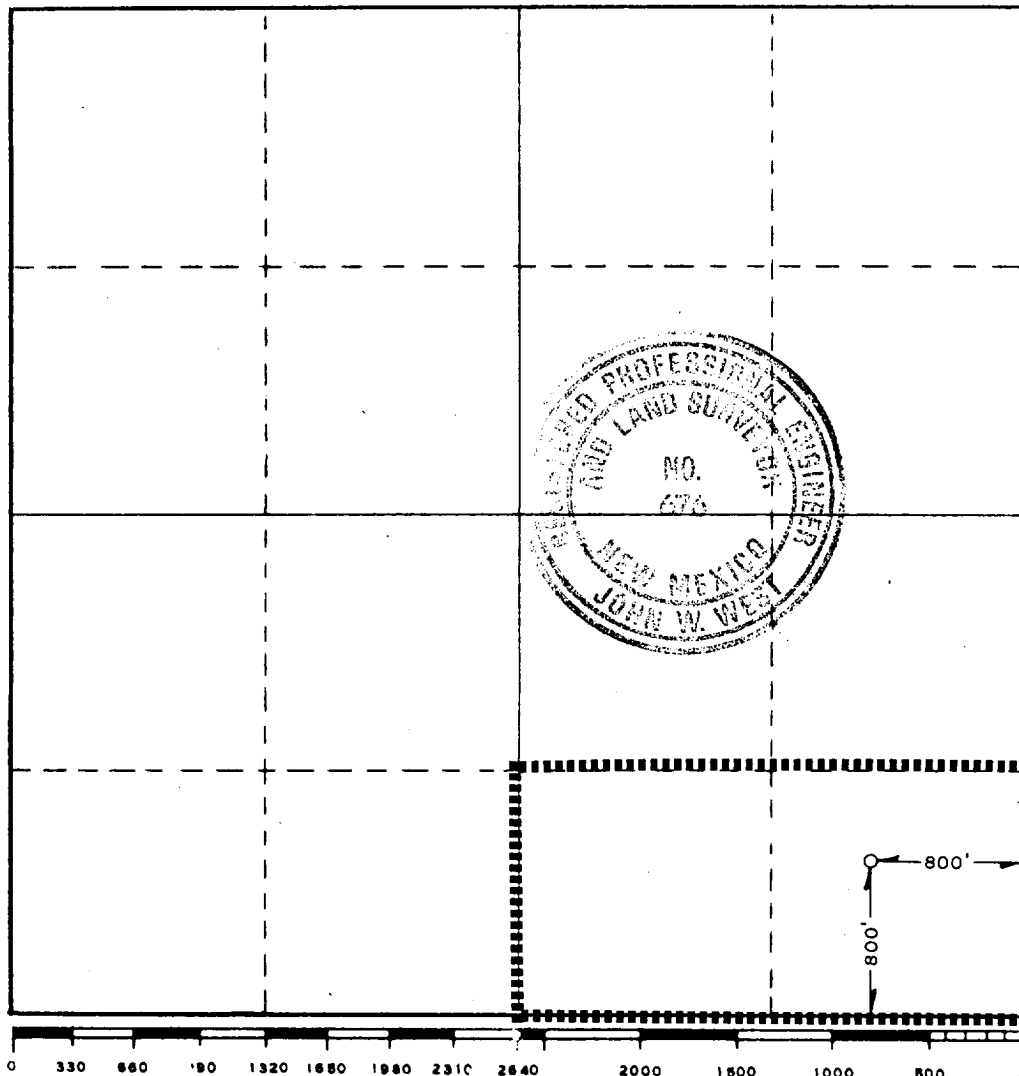
Operator SPENCE ENERGY CO.			Lease FEDERAL "25"		Well No. 2
Unit Letter P	Section 25	Township 9 SOUTH	Range 32 EAST	County LEA	
Actual Footage Location of Well: <div style="display: flex; justify-content: space-between;"> 800 feet from the SOUTH line and 800 feet from the EAST line </div>					
Ground Level Elev. 4288.0'	Producing Formation San Andres	Pool Flying "M"-San Andres (Ext.)		Dedicated Acreage: S½SE¼ 80 Acres	

1. Outline the acreage dedicated to the subject well by colored pencil or hachure marks on the plat below.
2. If more than one lease is dedicated to the well, outline each and identify the ownership thereof (both as to working interest and royalty). **SINGLE LEASE**
3. If more than one lease of different ownership is dedicated to the well, have the interests of all owners been consolidated by communitization, unitization, force-pooling, etc?

☐ Yes ☐ No If answer is "yes," type of consolidation _____

If answer is "no," list the owners and tract descriptions which have actually been consolidated. (Use reverse side of this form if necessary.) _____

No allowable will be assigned to the well until all interests have been consolidated (by communitization, unitization, forced-pooling, or otherwise) or until a non-standard unit, eliminating such interests, has been approved by the Commission.



CERTIFICATION

I hereby certify that the information contained herein is true and complete to the best of my knowledge and belief.

Jerry W. Long
Name
JERRY W. LONG
Position

Agent

Company
SPENCE ENERGY COMPANY

Date
December 17, 1985

I hereby certify that the well location shown on this plat was plotted from field notes of actual surveys made by me or under my supervision, and that the same is true and correct to the best of my knowledge and belief.

Date Surveyed
DECEMBER 14, 1985

Registered Professional Engineer and/or Land Surveyor

John W. West
Certificate No. **JOHN W. WEST, 676**
RONALD J. EIDSON, 3239