

NEW MEXICO OIL CONSERVATION COMMISSION
WELL LOCATION AND ACREAGE DEDICATION PLAT

Form O-112
Supersedes C-128
Effective 1-1-65

All distances must be from the outer boundaries of the Section

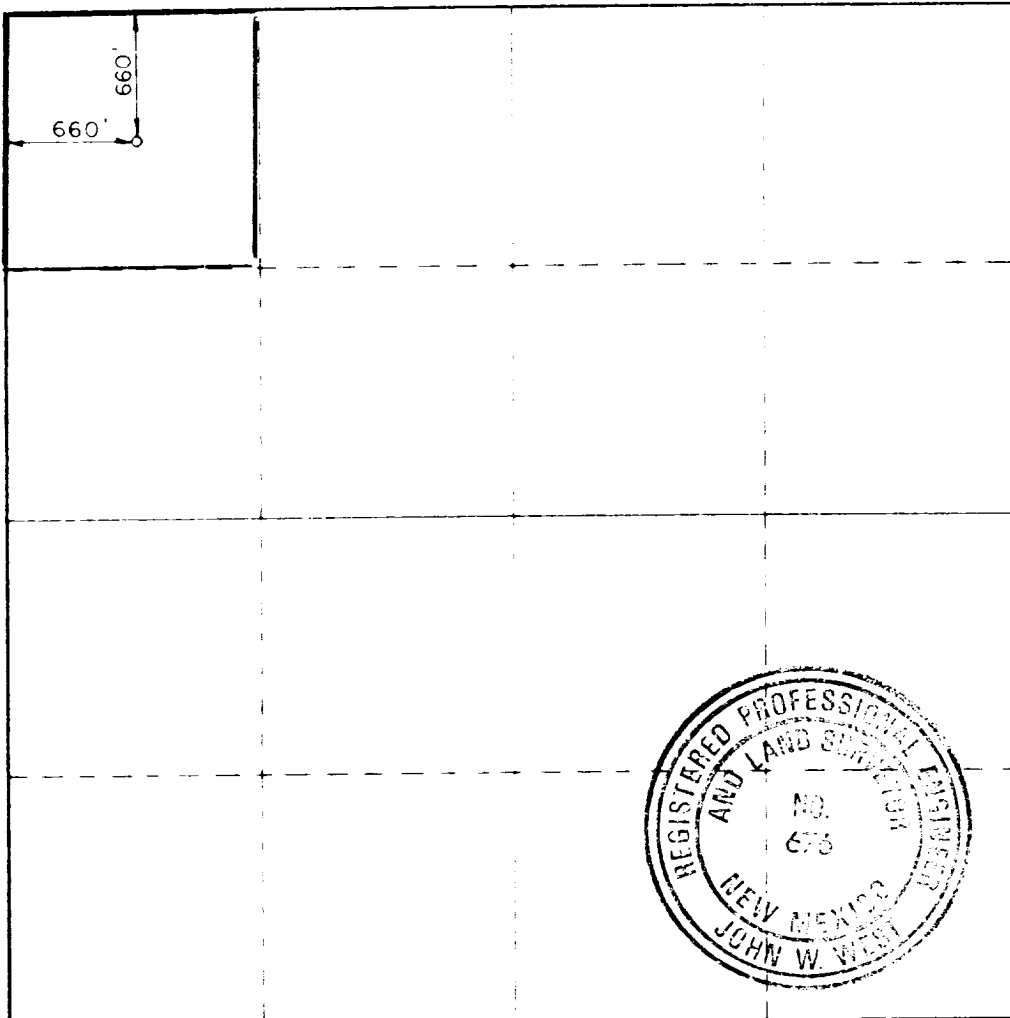
Owner Barbara Fasken		Lease Field Estate		Acres 1	
Section 33	Township 11-S	Range 38-E	County Lea		
North 660 feet from the line and 660 feet from the West					
Footage Elev. 3583.4	Footage from West Devonian		Footage Undesignated		Footage 40

- Outline the acreage dedicated to the subject well by colored pencil or hachure marks on the plat below
- If more than one lease is dedicated to the well, outline each and identify the ownership thereof (both as to working interest and royalty)
- If more than one lease of different ownership is dedicated to the well, have the interests of all owners been consolidated by communitization, unitization, force-pooling, etc?

X Yes ☐ No If answer is "yes" type of consolidation See attached Forced Pooling R-8523

If answer is "no" list the owners and tract descriptions which have actually been consolidated (Use reverse side of this form if necessary)

No allowable will be assigned to the well until all interests have been consolidated (by communitization, unitization, forced-pooling, or otherwise) or until a non-standard unit, eliminating such interests, has been approved by the Commission.



CERTIFICATION

I hereby certify that the information contained herein is true and complete to the best of my knowledge and belief

Jimmy Kline Jr
Agent

Barbara Fasken

9-4-87

I hereby certify that the well location shown on this plat was plotted from field notes of actual surveys made by me or under my supervision, and that the same is true and correct to the best of my knowledge and belief

Date Surveyed
August 15, 1987

Registered Professional Engineer and Land Surveyor

John W. West
Certificate No. JOHN W. WEST, 676
RONALD J. EIDSON, 3239