

NEW MEXICO OIL CONSERVATION COMMISSION  
WELL LOCATION AND ACREAGE DEDICATION PLAT

Form 07-1  
Supersedes O-128  
Effective 10-1-85

All distances must be from the outer boundaries of the Section

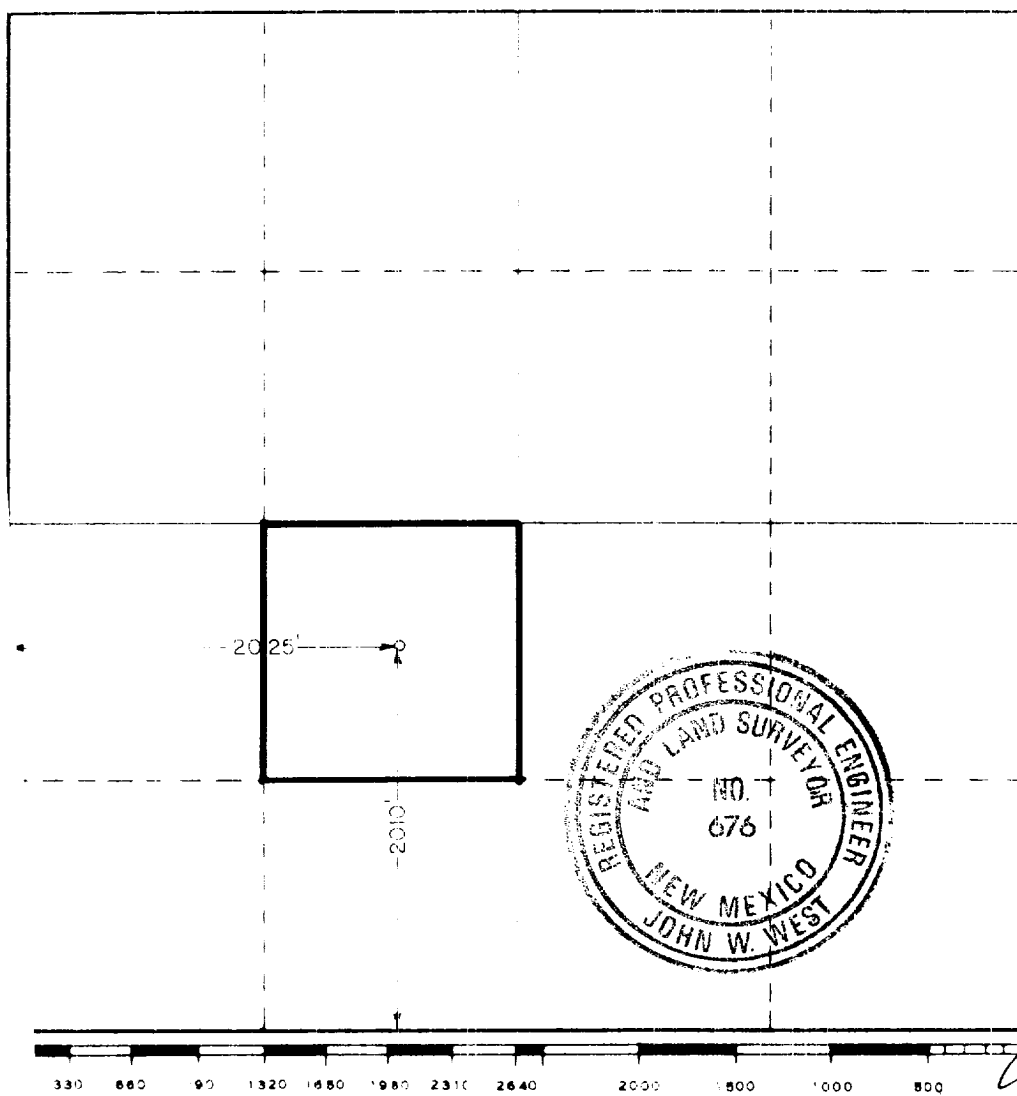
Field No. Union Pacific Resources			Lease State <del>25</del> -26		Acres
Section 26	Range 33 East	Township 10 South	County	Land	
Approximate Location of Well:					
2010 feet from the South line and		2025 feet from the West line			
Ground Level Elev. 4196.7	Producing Formation Devonian		Prod.	Estimated Acreage 40	

1. Outline the acreage dedicated to the subject well by colored pencil or hatchure marks on the plat below.
2. If more than one lease is dedicated to the well, outline each and identify the ownership thereof (both as to working interest and royalty).
3. If more than one lease of different ownership is dedicated to the well, have the interests of all owners been consolidated by communitization, unitization, force-pooling, etc?

☐ Yes ☐ No If answer is "yes," type of consolidation \_\_\_\_\_

If answer is "no," list the owners and tract descriptions which have actually been consolidated (if so, reverse side of this form if necessary.) \_\_\_\_\_

No allowable will be assigned to the well until all interests have been consolidated by communitization, unitization, forced-pooling, or otherwise (or until a non-standard unit, eliminating such interests, has been approved by the Commission).



CERTIFICATION

I hereby certify that the information contained herein is true and complete to the best of my knowledge and belief.

*Thailyn Ray*  
Signature

Regulatory Analyst

Union Pacific Resources Co.

March 8, 1988

I hereby certify that the well location shown on this plat was plotted from field notes of actual surveys made by me or under my supervision, and that the same is true and correct to the best of my knowledge and belief.

Date Surveyed

March 4, 1988

Registered Professional Engineer and Land Surveyor

*John W. West*  
Signature

Certificate No. JOHN W. WEST, 676  
RONALD J. EIDSON, 3239

Recd 3-12-90

ELF

RECEIVED

MAR 0 - 1988

QCD

HOBBS OFFICE