

UNITED STATES
DEPARTMENT OF THE INTERIOR
BUREAU OF LAND MANAGEMENT

APPLICATION FOR PERMIT TO DRILL, DEEPEN, OR PLUG BACK

1a. TYPE OF WORK

DRILL ☒

DEEPEN ☐

PLUG BACK ☐

b. TYPE OF WELL

OIL
WELL ☐

GAS
WELL ☐

OTHER

SINGLE
ZONE ☐

MULTIPLE
ZONE ☐

2. NAME OF OPERATOR

Beach Exploration, Inc.

3. ADDRESS OF OPERATOR

800 N. Marienfeld Suite 200 Midland, Texas 79701

4. LOCATION OF WELL (Report location clearly and in accordance with any State requirements.)*

At surface

996' FEL & 2310' FSL

(Unit I)

At proposed prod. zone 1980

(NE/4 SE/4)

14. DISTANCE IN MILES AND DIRECTION FROM NEAREST TOWN OR POST OFFICE*

5 Miles Northwest of Crossroads

15. DISTANCE FROM PROPOSED*

LOCATION TO NEAREST
PROPERTY OR LEASE LINE, FT. 330'
(Also to nearest drlg. unit line, if any)

18. DISTANCE FROM PROPOSED LOCATION*
TO NEAREST WELL, DRILLING, COMPLETED,
OR APPLIED FOR, ON THIS LEASE, FT.

NA

16. NO. OF ACRES IN LEASE

160 → 320 (335)

19. PROPOSED DEPTH

10,000

17. NO. OF ACRES ASSIGNED
TO THIS WELL

160

20. ROTARY OR CABLE TOOLS

Rotary

21. ELEVATIONS (Show whether DF, RT, GR, etc.)

4199.2' GL

22. APPROX. DATE WORK WILL START*

11-1-88

23. PROPOSED CASING AND CEMENTING PROGRAM

| SIZE OF HOLE | SIZE OF CASING | WEIGHT PER FOOT | SETTING DEPTH | QUANTITY OF CEMENT |
|--------------|----------------|-----------------|---------------|--------------------|
| 17 1/2" | 13 3/8" | 54.5# | 375' | 375 Sxs CIRCULATE |
| 12 1/4" | 8 5/8" | 32.0# | 4100' | 400 Sxs CIRCULATE |
| 7 7/8" | 4 1/2" | 11.6# | 10,000' | 300 Sxs |

IN ABOVE SPACE DESCRIBE PROPOSED PROGRAM: If proposal is to deepen or plug back, give data on present productive zone and proposed new productive zone. If proposal is to drill or deepen directionally, give pertinent data on subsurface locations and measured and true vertical depths. Give blowout preventer program, if any.

24.

SIGNED

TITLE Production

DATE 10-5-88

(This space for Federal or State office use)

PERMIT NO.

APPROVAL DATE

APPROVED BY

TITLE

DATE

CONDITIONS OF APPROVAL, IF ANY:

DATE

*See Instructions On Reverse Side

Title 18 U.S.C. Section 1001, makes it a crime for any person knowingly and willfully to make to any department or agency of the United States any false, fictitious or fraudulent statements or representations as to any matter within its jurisdiction.

N. MEXICO OIL CONSERVATION COMMISS.
WELL LOCATION AND ACREAGE DEDICATION PLAT

Form C-102
 Supersedes C-128
 Effective 1-1-65

All distances must be from the outer boundaries of the Section

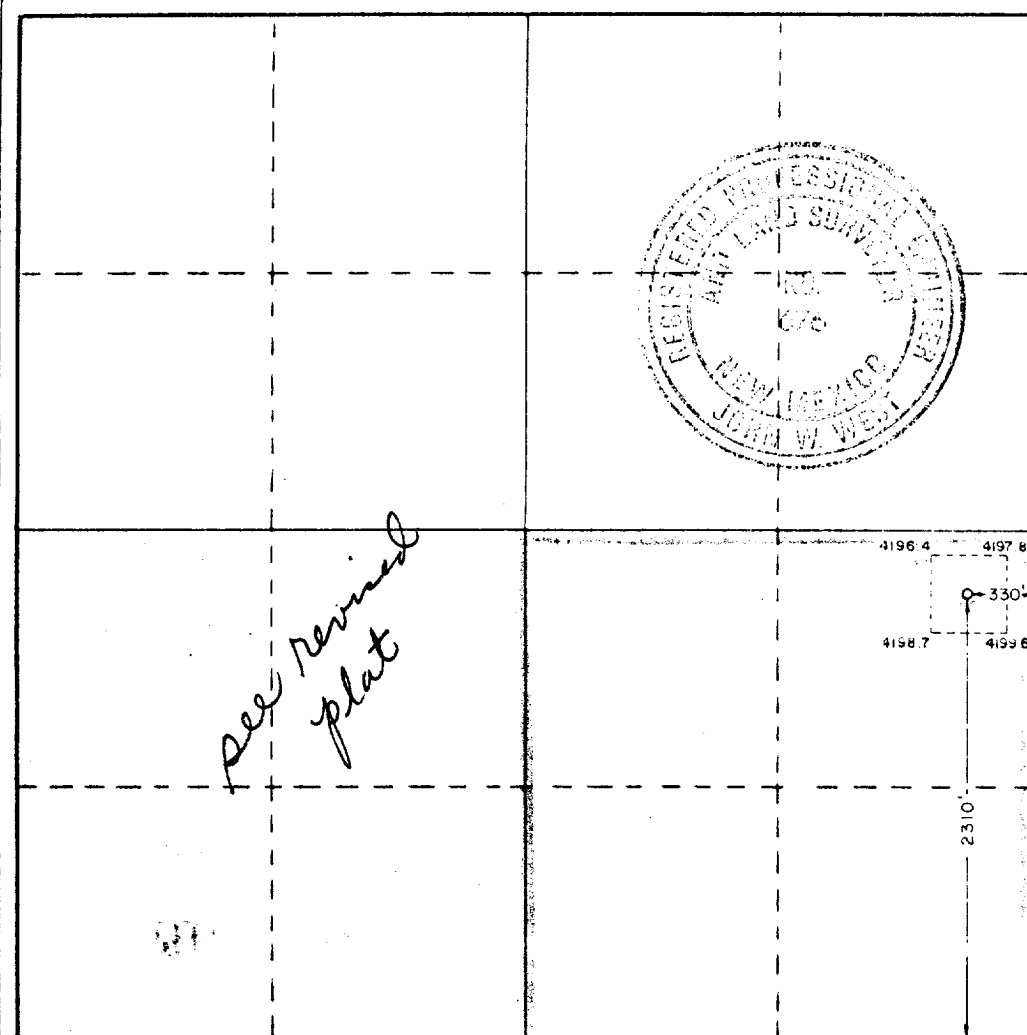
| | | | | | |
|---|------------------------------------|----------------------------|---------------------------|--|----------------------|
| Operator Beach Exploration Co., Inc. | | | Lease Bonds Fed | | Well No. 1 |
| Unit Letter I | Section 5 | Township 9 South | Range 35 East | County Lea | |
| Actual Footage Location of Well: 2310 feet from the south line and 330 feet from the east line | | | | | |
| Ground Level Elev. 4189.2 | Producing Formation Penn | Pool Vada | | Dedicated Acreage: 160 Acres | |

1. Outline the acreage dedicated to the subject well by colored pencil or hatchure marks on the plat below.
2. If more than one lease is dedicated to the well, outline each and identify the ownership thereof (both as to working interest and royalty).
3. If more than one lease of different ownership is dedicated to the well, have the interests of all owners been consolidated by communitization, unitization, force-pooling, etc?

☐ Yes ☐ No If answer is "yes," type of consolidation _____

If answer is "no," list the owners and tract descriptions which have actually been consolidated. (Use reverse side of this form if necessary.) _____

No allowable will be assigned to the well until all interests have been consolidated (by communitization, unitization, forced-pooling, or otherwise) or until a non-standard unit, eliminating such interests, has been approved by the Commission.



CERTIFICATION

I hereby certify that the information contained herein is true and complete to the best of my knowledge and belief.

Barbara Watson
 Signature

Barbara Watson
 Position

Production
 Company

Beach Exploration, Inc.
 Name

October 5, 1988
 Date

I hereby certify that the well location shown on this plat was plotted from field notes of actual surveys made by me or under my supervision, and that the same is true and correct to the best of my knowledge and belief.

Date Surveyed
September 29, 1988

Registered Professional Engineer
 and Land Surveyor

John W. West
 Signature

Certificate No. **JOHN W. WEST, 676**
RONALD J. EIDSON, 3239

RECEIVED

FEB 7 1989

OCD
NOBBS OFFICE

BLOWOUT PREVENTER ARRANGEMENT

Beach Exploration, Inc.
Bonds Federal Well #1
NE/4 SE/4 Sec.5, T9S, R35E
Lea Co., NM

