

Submit to Appropriate
District Office
State Lease - 6 copies
Fee Lease - 5 copies

State of New Mexico
Energy, Minerals and Natural Resources Department

Form C-101
Revised 1-1-89

OIL CONSERVATION DIVISION

P.O. Box 2088
Santa Fe, New Mexico 87504-2088

DISTRICT I
P.O. Box 1980, Hobbs, NM 88240

DISTRICT II
P.O. Drawer DD, Artesia, NM 88210

DISTRICT III
1000 Rio Brazos Rd., Aztec, NM 87410

API NO. (assigned by OCD on New Wells)

30-025-30984

5. Indicate Type of Lease

STATE ☒ FEE ☐

6. State Oil & Gas Lease No.

V-2508

7. Lease Name or Unit Agreement Name

Yates State

8. Well No.

1

9. Pool name or Wildcat

Undes. Cuerno Largo *Penn*

APPLICATION FOR PERMIT TO DRILL, DEEPEN, OR PLUG BACK

1a. Type of Work:

DRILL ☒

RE-ENTER ☐

DEEPEN ☐

PLUG BACK ☐

b. Type of Well:

OIL
WELL ☒

GAS
WELL ☐

OTHER ☐

SINGLE
ZONE ☐

MULTIPLE
ZONE ☐

2. Name of Operator

Manzano Oil Corporation 505/623-1996

3. Address of Operator

P.O. Box 2107, Roswell, NM 88202-2107

4. Well Location

Unit Letter H : 1980 Feet From The North Line and 660 Feet From The East Line

Section 35

Township 10S

Range 32E

NMPM

Lea

County

10. Proposed Depth

10,500

11. Formation

Strawn

12. Rotary or C.T.

Rotary

13. Elevations (Show whether DF, RT, GR, etc.)

4309.9 GR

14. Kind & Status Plug Bond

Statewide

15. Drilling Contractor

Unknown

16. Approx. Date Work will start

August 21, 1990

17.

PROPOSED CASING AND CEMENT PROGRAM

SIZE OF HOLE	SIZE OF CASING	WEIGHT PER FOOT	SETTING DEPTH	SACKS OF CEMENT	EST. TOP
17½"	13-3/8"	48#	380'	400	circulate
12¼"	8-5/8"	24# & 32#	3900'	1000	380
7-7/8"	5½"	17# J55	10,500	400	7300

Intend to spud 17½" hole. Will drill to 380', run and cement 13-3/8" casing. Then drill 12¼" hole to 3900' and run and cement 8-5/8" casing. Will nipple up Shaffer LWS 10" 900 hydraulic 3000# BOP and test with 10" hydril. Will test BOP choke manifold, hydril and casing with 1500 psi. Will then drill 7-7/8" hole to 10,500, testing all zones of interest. If productive will run and cement 5½" casing, perforate and complete. Will use spud mud and native mud to 3900'. Drill out with KCL water and have mud up at 7300' (top Abo) to TD.

IN ABOVE SPACE DESCRIBE PROPOSED PROGRAM: IF PROPOSAL IS TO DEEPEN OR PLUG BACK, GIVE DATA ON PRESENT PRODUCTIVE ZONE AND PROPOSED NEW PRODUCTIVE ZONE. GIVE BLOWOUT PREVENTER PROGRAM, IF ANY.

I hereby certify that the information above is true and complete to the best of my knowledge and belief.

SIGNATURE *Sher Williams*

Sher Williams

TITLE Production Clerk

DATE 8-13-90

TYPE OR PRINT NAME

TELEPHONE NO.

(This space for State Use)

APPROVED BY _____ TITLE _____ DATE _____

CONDITIONS OF APPROVAL, IF ANY:

NEW MEXICO OIL CONSERVATION COMMISSION
WELL LOCATION AND ACREAGE DEDICATION PLAT

Form C-102
Supersedes C-128
Effective 1-1-65

All distances must be from the outer boundaries of the Section

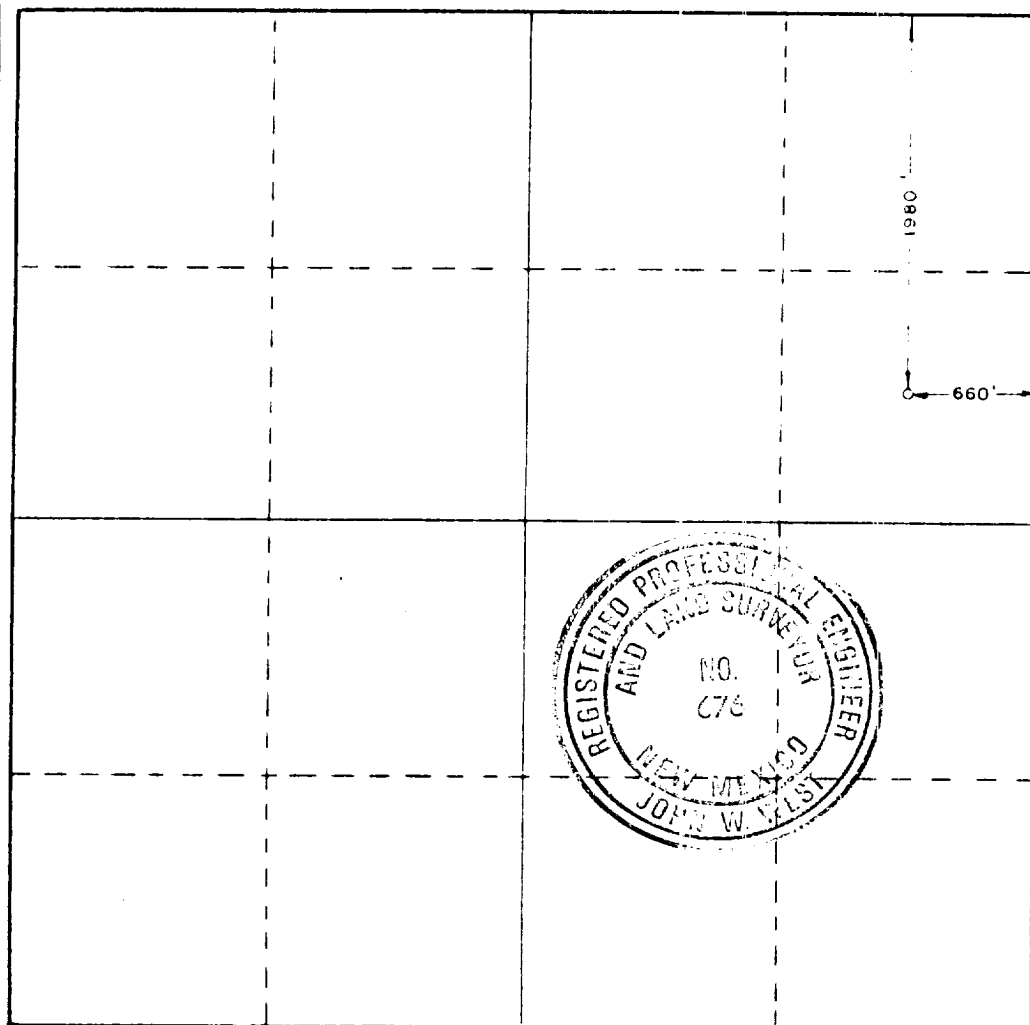
Operator MANZANO OIL CORP.			Lease Yates-State		Well No. 1
Tract Letter H	Section 35	Township 10S	Range 32E	County LEA	
Actual Footage Location of Well: 1980 feet from the NORTH line and 660 feet from the EAST line					
Ground Level Elev. 4309.9	Producing Formation Strawn	Pool Undes Cuerno Largo Penn		Dedicated Acreage: 40 acres	

1. Outline the acreage dedicated to the subject well by colored pencil or hatchure marks on the plat below.
2. If more than one lease is dedicated to the well, outline each and identify the ownership thereof (both as to working interest and royalty).
3. If more than one lease of different ownership is dedicated to the well, have the interests of all owners been consolidated by communitization, unitization, force-pooling, etc?

☐ Yes ☐ No If answer is "yes," type of consolidation _____

If answer is "no," list the owners and tract descriptions which have actually been consolidated. (Use reverse side of this form if necessary.) _____

No allowable will be assigned to the well until all interests have been consolidated (by communitization, unitization, forced-pooling, or otherwise) or until a non-standard unit, eliminating such interests, has been approved by the Commission.



CERTIFICATION

I hereby certify that the information contained herein is true and complete to the best of my knowledge and belief.

Sher Williams
Name

Sher Williams

Production Clerk

Company
Manzano Oil Corporation

Date
August 13, 1990

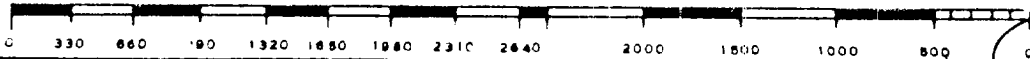
I hereby certify that the well location shown on this plat was plotted from field notes of actual surveys made by me or under my supervision, and that the same is true and correct to the best of my knowledge and belief.

Date Surveyed
3/14/85

Registered Professional Engineer and/or Land Surveyor

John W. West

Certificate No. JOHN W. WEST, 676
RONALD J. EIDSON, 3239



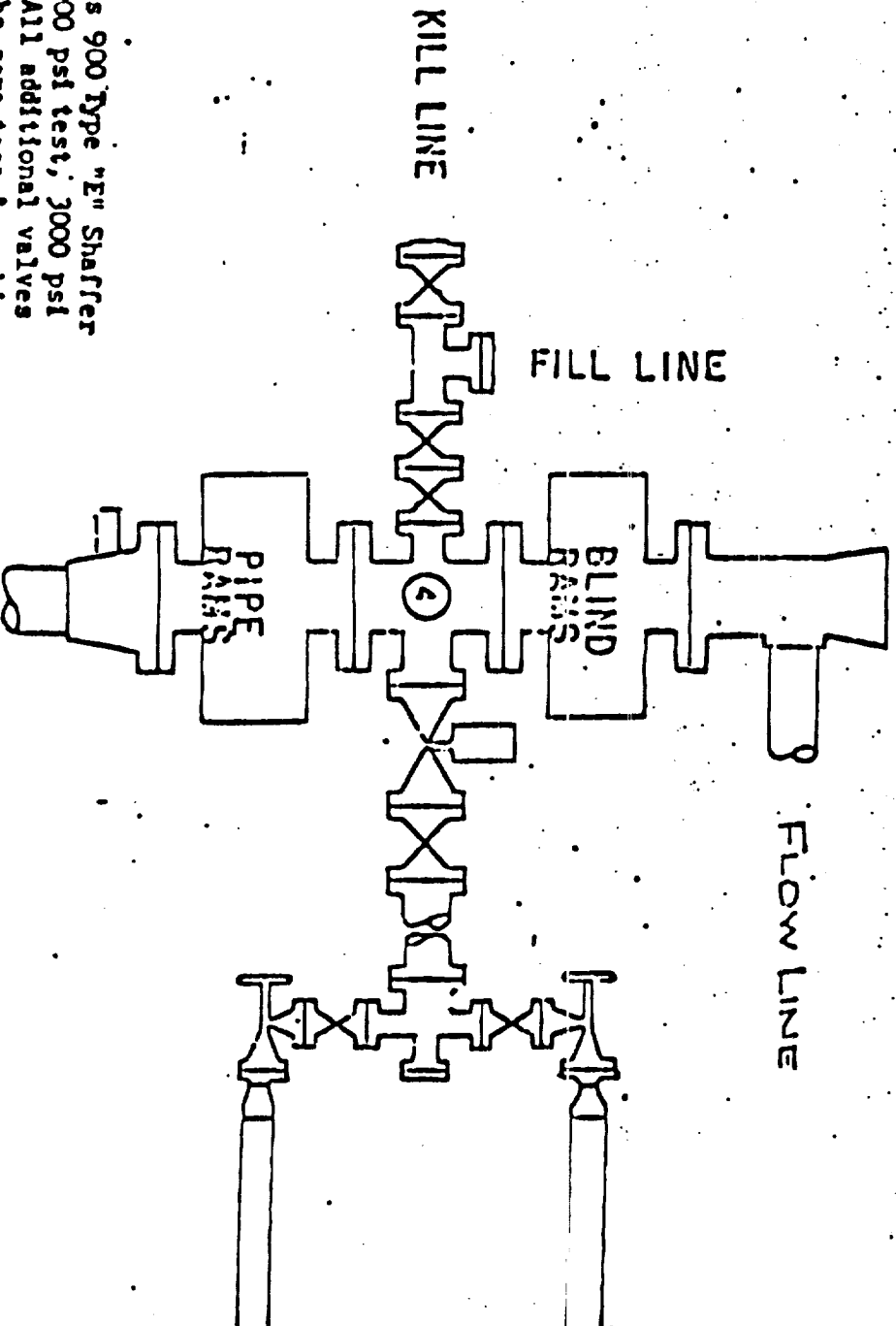
MANZANO OIL CORPORATION

Yates State #1

T10S-R32E, NMPM

Section 35: 1980' FNL & 660' FEL

BLOWOUT PREVENTER SPECIFICATION



BOP's are 10" Series 900 Type "E" Shaffer Double Hydraulic 6000 psi test, 3000 psi working pressure. All additional valves & connections are the same test & working pressures.

2008 12-6-90

EE

RECEIVED

AUG 17 1990

OCD
HOBBS OFFICE