

# OIL CONSERVATION DIVISION

P.O. Box 2088

Santa Fe, New Mexico 87504-2088

DISTRICT I  
P.O. Box 1980, Hobbs, NM 88240

DISTRICT II  
P.O. Drawer DD, Artesia, NM 88210

DISTRICT III  
1000 Rio Brazos Rd., Aztec, NM 87410

## WELL LOCATION AND ACREAGE DEDICATION PLAT

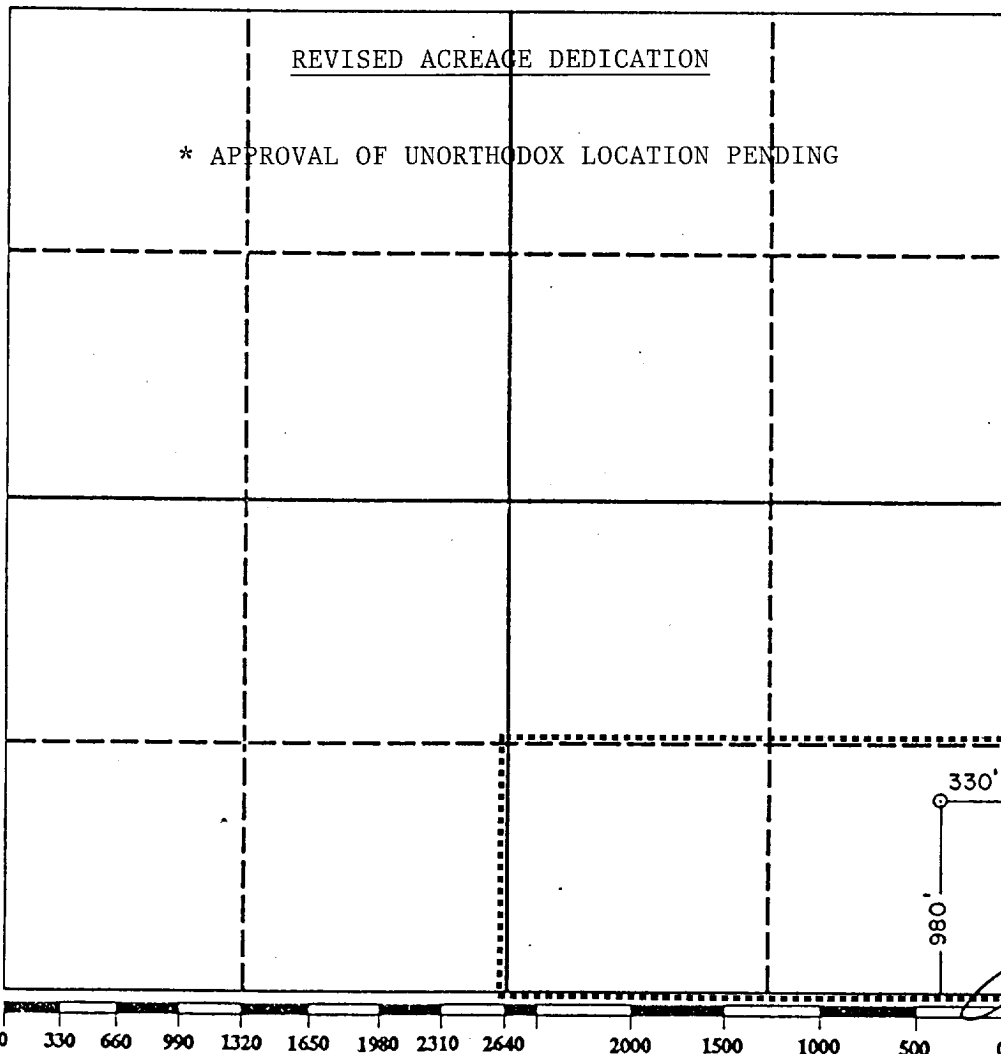
All Distances must be from the outer boundaries of the section

Operator SPENCE ENERGY CO.			Lease KELLAHIN 14		Well No. 4
Unit Letter P	Section 14	Township 9 SOUTH	Range 32 EAST	County LEA	

Actual Footage Location of Well:

330 feet from the EAST line and 980 feet from the SOUTH line			
Ground level Elev. 4336.4	Producing Formation Bough	Pool South Flying M - Bough	Dedicated Acreage: 80 Acres

- Outline the acreage dedicated to the subject well by colored pencil or hatchure marks on the plat below.
- If more than one lease is dedicated to the well, outline each and identify the ownership thereof (both as to working interest and royalty).  
SINGLE LEASE
- If more than one lease of different ownership is dedicated to the well, have the interest of all owners been consolidated by communitization, unitization, force-pooling, etc.?  
☐ Yes ☐ No If answer is "yes" type of consolidation \_\_\_\_\_  
If answer is "no" list the owners and tract descriptions which have actually been consolidated. (Use reverse side of this form if necessary).  
No allowable will be assigned to the well until all interests have been consolidated (by communitization, unitization, forced-pooling, or otherwise) or until a non-standard unit, eliminating such interest, has been approved by the Division.



### OPERATOR CERTIFICATION

I hereby certify that the information contained herein is true and complete to the best of my knowledge and belief.

Signature  
JERRY W. LONG  
Printed Name  
JERRY W. LONG  
Position  
Permit Agent  
Company  
SPENCE ENERGY COMPANY  
Date  
April 16, 1991

### SURVEYOR CERTIFICATION

I hereby certify that the well location shown on this plat was plotted from field notes of actual surveys made by me or under my supervision, and that the same is true and correct to the best of my knowledge and belief.

Date Surveyed  
Signature & Seal of Professional Surveyor

Certificate No. JOHN W. WEST, 676  
RONALD J. EIDSON, 3239