

Submit to Appropriate  
District Office  
State Lease - 6 copies  
Fee Lease - 5 copies

State of New Mexico  
Energy, Minerals and Natural Resources Department

Form C-101  
Revised 1-1-89

OIL CONSERVATION DIVISION

P.O. Box 2088  
Santa Fe, New Mexico 87504-2088

DISTRICT I  
P.O. Box 1980, Hobbs, NM 88240

DISTRICT II  
P.O. Drawer DD, Artesia, NM 88210

DISTRICT III  
1000 Rio Brazos Rd., Aztec, NM 87410

API NO. (assigned by OCD on New Wells) <b>30-025-31188</b>	
5. Indicate Type of Lease STATE <input checked="" type="checkbox"/> FEE <input type="checkbox"/>	
6. State Oil & Gas Lease No. E-2013	
7. Lease Name or Unit Agreement Name South Four Lakes Unit	
8. Well No. 9	
9. Pool name or Wildcat Four Lakes - Pennsylvanian	
10. Proposed Depth 10500'	
11. Formation Pennsylvanian	
12. Rotary or C.T. Rotary	
13. Elevations (Show whether DF, RT, GR, etc.) 4148.9' GL (unprepared)	
14. Kind & Status Plug. Bond Blanket	
15. Drilling Contractor advise later	
16. Approx. Date Work will start upon approval	

APPLICATION FOR PERMIT TO DRILL, DEEPEN, OR PLUG BACK

1a. Type of Work:  
DRILL ☒ RE-ENTER ☐ DEEPEN ☐ PLUG BACK ☐

b. Type of Well:  
OIL WELL ☒ GAS WELL ☐ OTHER ☐  
SINGLE ZONE ☒ MULTIPLE ZONE ☐

2. Name of Operator  
PHILLIPS PETROLEUM COMPANY

3. Address of Operator  
4001 Penbrook St., Odessa, TX 79762

4. Well Location  
Unit Letter J : 1980 Feet From The East Line and 1980 Feet From The South Line  
Section 35 Township 11-S Range 34-E NMPM Lea County

10. Proposed Depth 10500'		11. Formation Pennsylvanian		12. Rotary or C.T. Rotary	
13. Elevations (Show whether DF, RT, GR, etc.) 4148.9' GL (unprepared)		14. Kind & Status Plug. Bond Blanket		15. Drilling Contractor advise later	
16. Approx. Date Work will start upon approval		17. PROPOSED CASING AND CEMENT PROGRAM			
SIZE OF HOLE	SIZE OF CASING	WEIGHT PER FOOT	SETTING DEPTH	SACKS OF CEMENT	EST. TOP
17-1/2"	13-3/8"	54.5#	400'	700 sacks C	surface
12-1/4"	8-5/8"	24# & 32#	4200'	1500 sk C & Neat	surface
7-7/8"	5-1/2"	17#	10500'	400 sk C (lead)	3700'
				350 sk C Neat (tail) 8500'	

BOP EQUIPMENT SERIES 900, 3000# WP  
(see attached schematic figure 7-9 or 7-10)  
Mud program attached

IN ABOVE SPACE DESCRIBE PROPOSED PROGRAM: IF PROPOSAL IS TO DEEPEN OR PLUG BACK, GIVE DATA ON PRESENT PRODUCTIVE ZONE AND PROPOSED NEW PRODUCTIVE ZONE. GIVE BLOWOUT PREVENTER PROGRAM, IF ANY.

I hereby certify that the information above is true and complete to the best of my knowledge and belief.

SIGNATURE L. M. Sanders TITLE Supervisor, Regulation & Proration DATE 3/1/91  
TYPE OR PRINT NAME L. M. Sanders TELEPHONE NO. (915) 368-1411

(This space for State Use)

ORIGINAL SIGNED BY JERRY SEXTON

APPROVED BY DISTRICT I SUPERVISOR TITLE  DATE

CONDITIONS OF APPROVAL, IF ANY:

Permit Expires 6 Months From Approval  
Date Unless Drilling Underway.

MAR 04 1991

Submit to Appropriate  
District Office  
State Lease - 4 copies  
Fee Lease - 3 copies

State of New Mexico  
Energy, Minerals and Natural Resources Department

Form C-102  
Revised 1-1-89

OIL CONSERVATION DIVISION

P.O. Box 2088  
Santa Fe, New Mexico 87504-2088

DISTRICT I  
P.O. Box 1980, Hobbs, NM 88240

DISTRICT II  
P.O. Drawer DD, Artesia, NM 88210

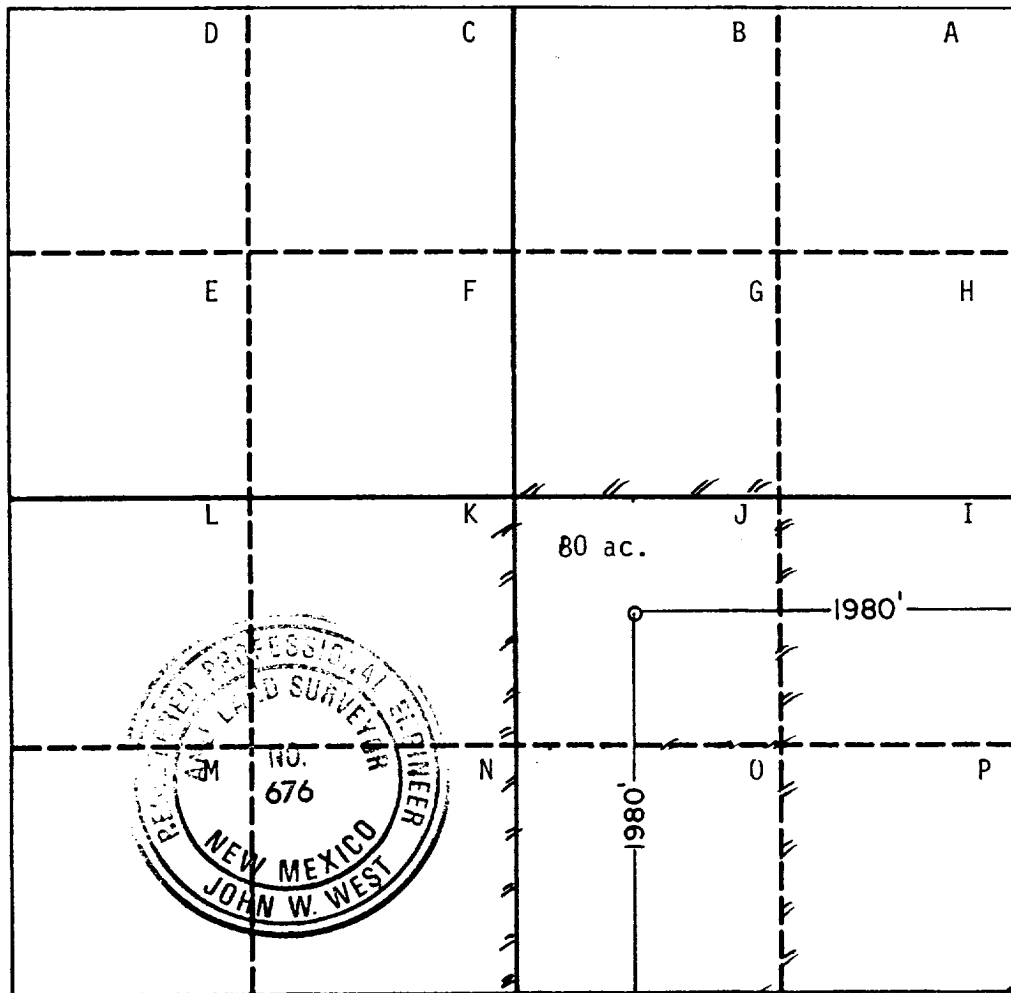
DISTRICT III  
1000 Rio Brazos Rd., Aztec, NM 87410

WELL LOCATION AND ACREAGE DEDICATION PLAT

All Distances must be from the outer boundaries of the section

Operator Phillips Petroleum Company			Lease South Four Lakes Unit		Well No. 9
Unit Letter J	Section 35	Township 11 South	Range 34 East	County NMPM	Lea
Actual Footage Location of Well: 1980 feet from the South line and 1980 feet from the East line					
Ground level Elev. 4148.9	Producing Formation Pennsylvanian	Pool Four Lakes - Pennsylvanian	Dedicated Acreage: 80 Acres		

1. Outline the acreage dedicated to the subject well by colored pencil or hatchure marks on the plat below.
2. If more than one lease is dedicated to the well, outline each and identify the ownership thereof (both as to working interest and royalty).
3. If more than one lease of different ownership is dedicated to the well, have the interest of all owners been consolidated by communitization, unitization, force-pooling, etc.?  
☐ Yes ☐ No If answer is "yes" type of consolidation \_\_\_\_\_  
If answer is "no" list the owners and tract descriptions which have actually been consolidated. (Use reverse side of this form if necessary).  
No allowable will be assigned to the well until all interests have been consolidated (by communitization, unitization, forced-pooling, or otherwise) or until a non-standard unit, eliminating such interest, has been approved by the Division.



OPERATOR CERTIFICATION

I hereby certify that the information contained herein is true and complete to the best of my knowledge and belief.

Signature

*L. M. Sanders*

Printed Name

L. M. Sanders

Position  
REGULATION &  
SUPERVISOR, PRORATION

Company

PHILLIPS PET. CO.

Date

3/1/91

SURVEYOR CERTIFICATION

I hereby certify that the well location shown on this plat was plotted from field notes of actual surveys made by me or under my supervision, and that the same is true and correct to the best of my knowledge and belief.

Date Surveyed

February 5, 1991

Signature & Seal of  
Professional Surveyor

*Ronald J. Eidson*

Certified by JOHN W. WEST, 676  
RONALD J. EIDSON, 3239

RECEIVED

MAR 14 1991

CCB  
HOBBS OFFICE

# FIELD PRACTICES AND STANDARDS

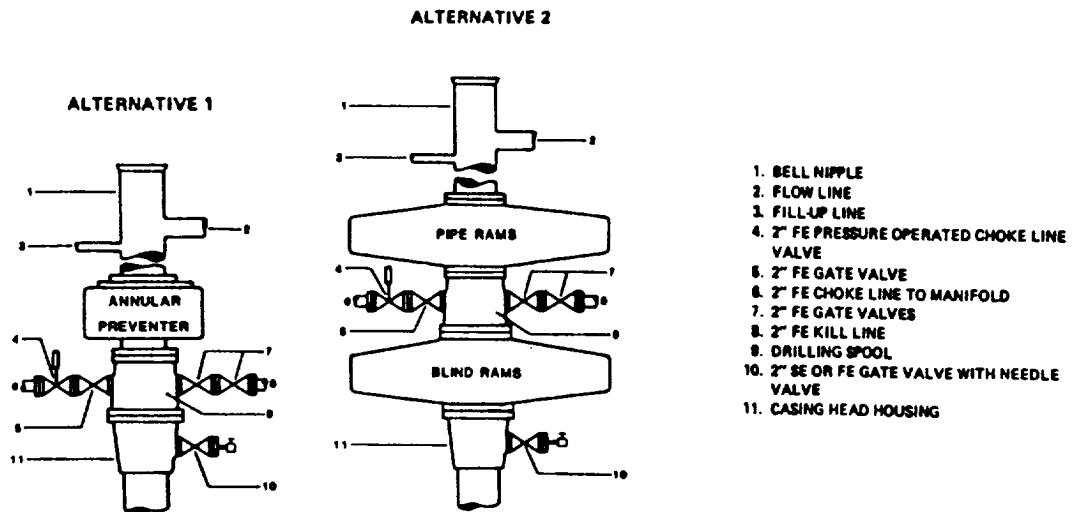


Figure 7-9. Standard Hydraulic Blowout Preventer Assembly  
(2 M or 3 M Working Pressure) Alternative 1

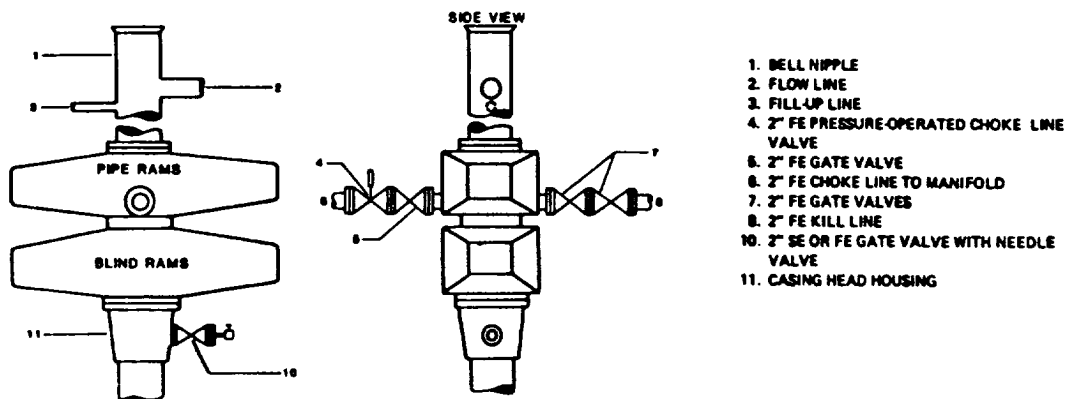


Figure 7-10. Standard Hydraulic Blowout Preventer Assembly  
(2 M or 3 M Working Pressure) Alternative 3 (without Drilling Spool)

PROPOSED CASING & CEMENTING PROGRAM

SOUTH FOUR LAKES WELL NO. 9

13 3/8" 54.5 lb/ft K-55 Surface Casing Set at 400' - 17 1/2" Hole:

Circulate to surface with 700 sacks of Class "C" + 2% CaCl<sub>2</sub>.

Slurry Weight:	14.8 ppg
Slurry Yield:	1.32 ft <sup>3</sup> /sx
Water Requirement:	6.3 gals/sx

8 5/8" 24 & 32 lb/ft K-55 Intermediate Casing Set at 4200' - 12 1/4" Hole:

Lead: 1000 sx Class "C" 65/35 Poz + 6% Bentonite + 5% Salt. TOC = Surface.

Slurry Weight:	13.2 ppg
Slurry Yield:	1.70 ft <sup>3</sup> /sx
Water Requirement:	8.8 gals/sx

Tail: 150 sx Class "C" Neat.

Slurry Weight:	14.8 ppg
Slurry Yield:	1.32 ft <sup>3</sup> /sx
Water Requirement:	6.2 gals/sx

5 1/2" 15.5 & 17 lb/ft K-55 Production Casing Set at 10500' - 7 7/8" Hole:

Lead: 400 sx Class "C" + 20% Diacel "D". Desired TOC = 3700'.

Slurry Weight:	12.0 ppg
Slurry Yield:	2.69 ft <sup>3</sup> /sx
Water Requirement:	15.5 gals/sx

Tail: 350 sx Class "C" Neat. Desired TOC = 8500'.

Slurry Weight:	14.8 ppg
Slurry Yield:	1.32 ft <sup>3</sup> /sx
Water Requirement:	6.3 gals/sx

# PROPOSED MUD PROGRAM

SOUTH FOUR LAKES WELL NO. 9

DEPTH	MUD WEIGHT	VISCOSITY	FLUID LOSS	CL PPM	% SOLIDS	ADDITIVES
Surf - 400'	8.3-9.0 ppg	28-36 sec/1000 cc	-	-	-	Native Solids
400' - 4200'	10.0 ppg	29-32 sec/1000 cc	-	Saturated	-	Native Solids
4200' - 8500'	8.3-9.5 ppg	28-36 sec/1000 cc	-	-	-	
8500' - 10500'	8.5-9.0 ppg	32-38 sec/1000 cc	20 cc or less	-	-	Gel/Driscap Plus

Remarks: Use DBX dripped into flowline 10-15' upstream from lower end if extra settling of solids is desired while circulating the reserve.

The Mud Engineer shall include on each test report the materials used for the previous 24 hr. period. Twice weekly mail copies of the test reports to:

A. C. Sewell  
4001 Penbrook  
Odessa, Texas 79762

Send two copies of the Well Recap (Final Cost & Engineering Summaries) to A. C. Sewell at the above address.

16-01-68204  
173

10 30

10 30

10