

NEW MEXICO OIL CONSERVATION COMMISSION
WELL LOCATION AND ACREAGE DEDICATION PLAT

Form C-102
Supersede C-128
Effective 1-1-65

All distances must be from the outer boundaries of the Section.

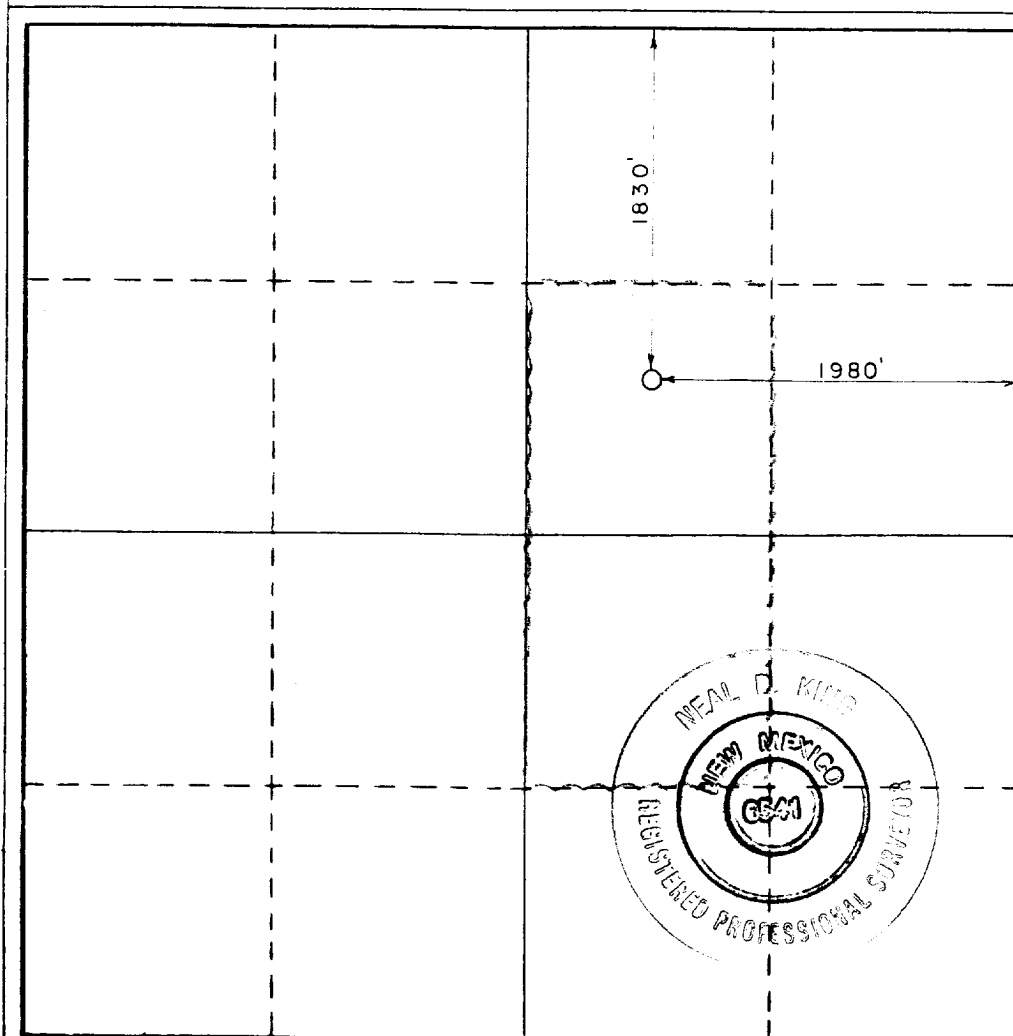
Operator AMERADA-HESS CORPORATION		Lease State BTA		Well No. 3
Unit Letter G	Section 2	Township 12S	Range 33E	County Lea
Actual Footage Location of Well: 1830 feet from the North line and 1980 feet from the East line				
Ground Level Elev. 4237.3	Producing Formation Devonian	Pool Bagley Siluro-Devonian	Dedicated Acreage: 80 Acres	

1. Outline the acreage dedicated to the subject well by colored pencil or hatchure marks on the plat below.
2. If more than one lease is dedicated to the well, outline each and identify the ownership thereof (both as to working interest and royalty).
3. If more than one lease of different ownership is dedicated to the well, have the interests of all owners been consolidated by communitization, unitization, force-pooling, etc?

☐ Yes ☐ No If answer is "yes," type of consolidation N/A

If answer is "no," list the owners and tract descriptions which have actually been consolidated. (Use reverse side of this form if necessary.) N/A

No allowable will be assigned to the well until all interests have been consolidated (by communitization, unitization, forced-pooling, or otherwise) or until a non-standard unit, eliminating such interests, has been approved by the Commission.



CERTIFICATION

I hereby certify that the information contained herein is true and complete to the best of my knowledge and belief.

Eric Hand for J.R. Wilson

Name

J. R. Wilson

Position

Supervisor, Drlg Admin. Svs

Company

Amerada Hess Corp.

Date

9-24-91

I hereby certify that the well location shown on this plat was plotted from field notes of actual surveys made by me or under my supervision, and that the same is true and correct to the best of my knowledge and belief.

September 21, 1991

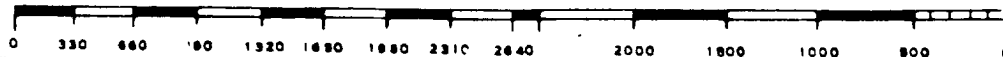
Date Surveyed

Registered Professional Engineer and/or Land Surveyor

Neal D. King

Certificate No.

R.L.S. 6541





SECRET

SEP 26 1991

3-00

NOON ONCE