

District I  
PO Box 1980, Hobbs, NM 88241-1980  
District II  
811 South First, Artesia, NM 88210  
District III  
1000 Rio Brazos Rd., Aztec, NM 87410  
District IV  
2040 South Pacheco, Santa Fe, NM 87505

State of New Mexico  
Energy, Minerals & Natural Resources Department

OIL CONSERVATION DIVISION  
2040 South Pacheco  
Santa Fe, NM 87505

Form C-101  
Revised October 18, 1994  
Instructions on back  
Submit to Appropriate District Office  
State Lease - 6 Copies  
Fee Lease - 5 Copies

☐ AMENDED REPORT

APPLICATION FOR PERMIT TO DRILL, RE-ENTER, DEEPEN, PLUGBACK, OR ADD A ZONE

<sup>1</sup> Operator Name and Address. Cobra Oil & Gas Corporation PO Box 8206 Wichita Falls, Texas 76307		<sup>2</sup> OGRID Number 147404
		<sup>3</sup> API Number 30-025-31520
<sup>4</sup> Property Code 23245	<sup>5</sup> Property Name State SWD	<sup>6</sup> Well No. #1 SWD

<sup>7</sup> Surface Location

UL or lot no.	Section	Township	Range	Lot Idn	Feet from the	North/South line	Feet from the	East/West line	County
J	16	9S	37E		1650	South	2150	East	Lea

<sup>8</sup> Proposed Bottom Hole Location If Different From Surface

UL or lot no.	Section	Township	Range	Lot Idn	Feet from the	North/South line	Feet from the	East/West line	County

<sup>9</sup> Proposed Pool 1 SWD W. Sawyer (San Andres)	<sup>10</sup> Proposed Pool 2
---	-------------------------------

<sup>11</sup> Work Type Code E	<sup>12</sup> Well Type Code S	<sup>13</sup> Cable/Rotary R	<sup>14</sup> Lease Type Code S	<sup>15</sup> Ground Level Elevation 3992 Gr
<sup>16</sup> Multiple No	<sup>17</sup> Proposed Depth 7694'	<sup>18</sup> Formation San Andres	<sup>19</sup> Contractor	<sup>20</sup> Spud Date 2/23/98

<sup>21</sup> Proposed Casing and Cement Program

Hole Size	Casing Size	Casing weight/foot	Setting Depth	Sacks of Cement	Estimated TOC
17 1/2"	13 3/8"	48#	421'	450	Surface
11 "	8 5/8"	32#	4223'	1300	Surface

<sup>22</sup> Describe the proposed program. If this application is to DEEPEN or PLUG BACK give the data on the present productive zone and proposed new productive zone. Describe the blowout prevention program, if any. Use additional sheets if necessary.

Reentry of IP Petroleum Co., Inc. State #1 well drilled as a dry hole in 3/1992, to convert to salt water disposal. Drill out cement plugs from surface to 480', from 2150-2250', from 4174-4274', and from 5510-5610'. Clean out open hole to depth of 7694'. Utilize for salt water disposal, Administrative Order SWD-691.

Permit Expires 1 Year From Approval

Date Unless Drilling Underway

Re-Entry

<sup>23</sup> I hereby certify that the information given above is true and complete to the best of my knowledge and belief.

Signature:

Rory Edwards

Printed name:

Rory Edwards

Title:

Production Supervisor

OIL CONSERVATION DIVISION

Approved by: ORIGINAL SIGNED BY CHRIS WILLIAMS  
DISTRICT I SUPERVISOR

Title:

Approval Date:

11/1/98

Expiration Date:

DISTRICT I  
P.O. Box 1980, Hobbs, NM 88241-1980

DISTRICT II  
P.O. Drawer DD, Artesia, NM 88211-0719

DISTRICT III  
1000 Rio Brazos Rd., Aztec, NM 87410

DISTRICT IV  
P.O. BOX 2088, SANTA FE, N.M. 87504-2088

State of New Mexico  
Energy, Minerals and Natural Resources Depart.

Form C-102  
Revised February 10, 1994  
Submit to Appropriate District Office  
State Lease - 4 Copies  
Fee Lease - 3 Copies

OIL CONSERVATION DIVISION  
P.O. Box 2088  
Santa Fe, New Mexico 87504-2088

☐ AMENDED REPORT

WELL LOCATION AND ACREAGE DEDICATION PLAT

API Number <b>30-025-31520</b>	Pool Code <b>96121</b>	Pool Name <b>SWD</b> <del>W. Sawyer</del> (San Andres)
Property Code <b>23245</b>	Property Name <b>STATE SWD</b>	Well Number <b>#1 SWD</b>
OGRID No. <b>147404</b>	Operator Name <b>COBRA OIL &amp; GAS CORPORATION</b>	Elevation <b>3992 Gr</b>

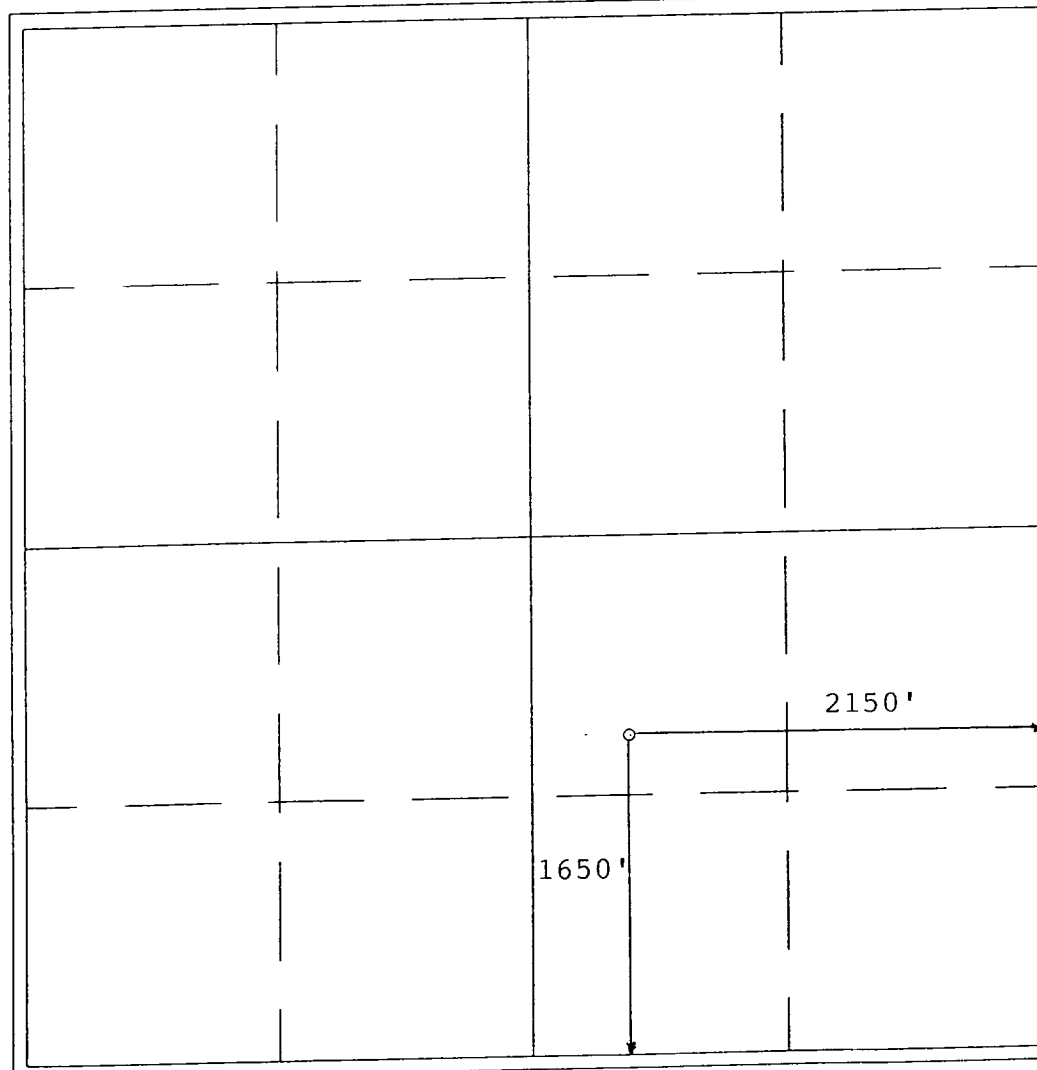
Surface Location

UL or lot No. <b>J</b>	Section <b>16</b>	Township <b>9 S</b>	Range <b>37 E</b>	Lot Idn	Feet from the <b>1650</b>	North/South line <b>SOUTH</b>	Feet from the <b>2150</b>	East/West line <b>EAST</b>	County <b>LEA</b>
---------------------------	----------------------	------------------------	----------------------	---------	------------------------------	----------------------------------	------------------------------	-------------------------------	----------------------

Bottom Hole Location If Different From Surface

UL or lot No.	Section	Township	Range	Lot Idn	Feet from the	North/South line	Feet from the	East/West line	County
Dedicated Acres	Joint or Infill	Consolidation Code	Order No.						

NO ALLOWABLE WILL BE ASSIGNED TO THIS COMPLETION UNTIL ALL INTERESTS HAVE BEEN CONSOLIDATED  
OR A NON-STANDARD UNIT HAS BEEN APPROVED BY THE DIVISION



OPERATOR CERTIFICATION

I hereby certify the the information  
contained herein is true and complete to the  
best of my knowledge and belief.

*Rory Edwards*  
Signature

Rory Edwards

Printed Name  
Production Supervisor

Title  
4-29-98

Date

SURVEYOR CERTIFICATION

I hereby certify that the well location shown  
on this plat was plotted from field notes of  
actual surveys made by me or under my  
supervision, and that the same is true and  
correct to the best of my belief.

MARCH 17, 1997

Date Surveyed DMCC

Signature & Seal of  
Professional Surveyor

*Ronald W. Edson*  
RONALD W. EDSON  
3-18-97  
97-11-0498

Certificate No. JOHN W. EDSON 676  
RONALD W. EDSON 3239  
CAROL EDSON 12641