

Submit to Appropriate  
District Office  
State Lease - 4 copies  
Fee Lease - 3 copies

State of New Mexico  
Department of Minerals and Natural Resources

Form C-102  
Revised 1-1-89

OIL CONSERVATION DIVISION

P.O. Box 2088  
Santa Fe, New Mexico 87504-2088

DISTRICT I

P.O. Box 1980, Hobbs, NM 88240

DISTRICT II

P.O. Drawer DD, Artesia, NM 88210

DISTRICT III

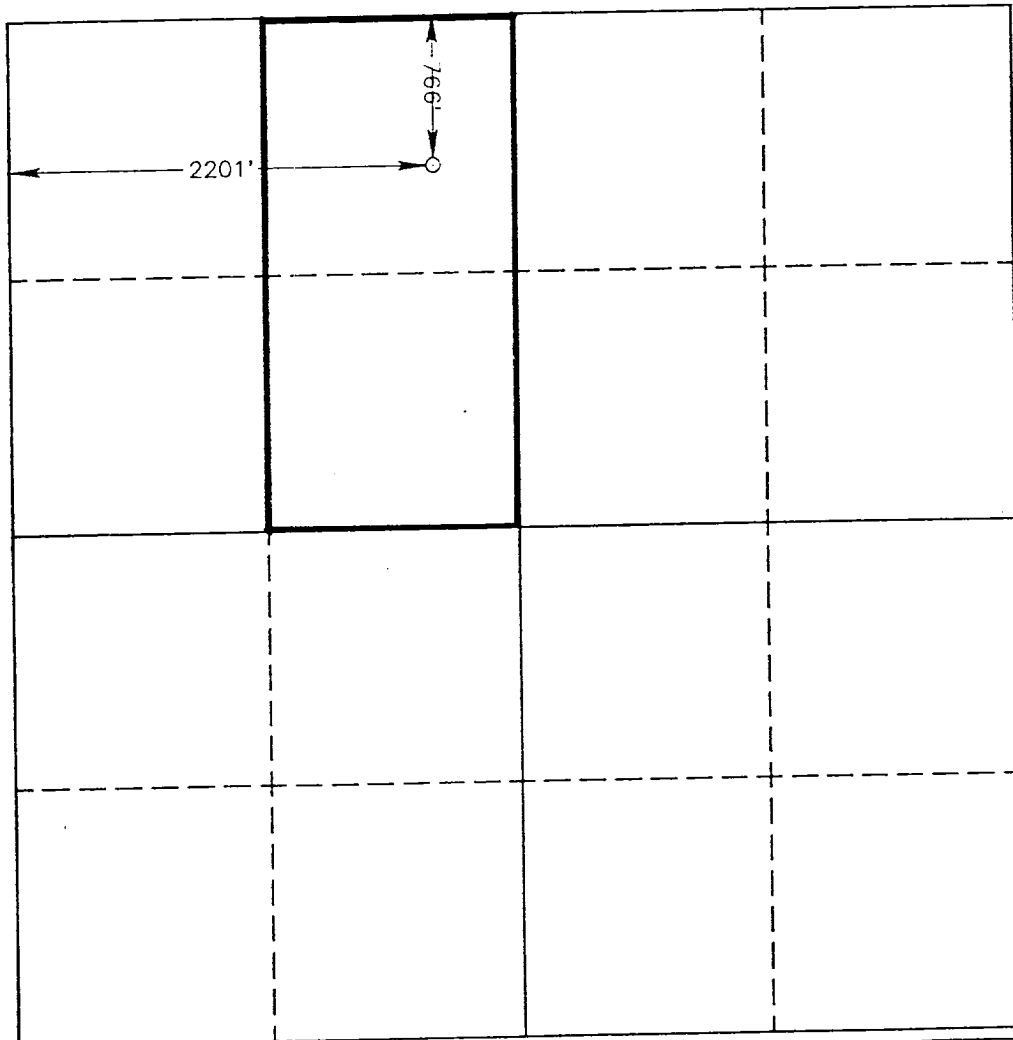
1000 Rio Brazos Rd., Aztec, NM 87410

WELL LOCATION AND ACREAGE DEDICATION PLAT

All Distances must be from the outer boundaries of the section

Operator MARALO, INC.			Lease BARNES "20"		Well No. 1
Unit Letter C	Section 20	Township 9 SOUTH	Range 35 EAST	NMPM	County LEA
Actual Footage Location of Well: 766 feet from the NORTH line and 2201 feet from the WEST line					
Ground Level Elev. 4169.7'	Producing Formation Devonian		Pool Northeast Jenkins Devonian		Dedicated Acreage: 80 Acres

1. Outline the acreage dedicated to the subject well by colored pencil or hachure marks on the plat below.
  2. If more than one lease is dedicated to the well, outline each and identify the ownership thereof (both as to working interest and royalty).
  3. If more than one lease of different ownership is dedicated to the well, have the interest of all owners been consolidated by communitization, unitization, force-pooling, etc.?  
☐ Yes ☐ No If answer is "yes" type of consolidation \_\_\_\_\_
- If answer is "no" list of owners and tract descriptions which have actually been consolidated. (Use reverse side of this form necessary.) \_\_\_\_\_
- No allowable will be assigned to the well unit all interests have been consolidated (by communitization, unitization, forced-pooling, otherwise) or until a non-standard unit, eliminating such interest, has been approved by the Division.



OPERATOR CERTIFICATION

I hereby certify the information contained herein is true and complete to the best of my knowledge and belief.

*Dorothea Owens*

Printed Name  
Dorothea Owens

Position  
Regulatory Analyst

Company  
Maralo, Inc.

Date  
January 13, 1993

SURVEYOR CERTIFICATION

I hereby certify that the well location shown on this plat was plotted from field notes of actual surveys made by me or under my supervision, and that the same is true and correct to the best of my knowledge and belief.

Date Surveyed  
MAY 13, 1992

Signature & Seal of  
Professional Surveyor

*Ronald J. Eidson*

Certificate No. JOHN W. WEST, 876  
RONALD J. EIDSON, 3239  
GARY L. JONES, 7877

92-11-0642