

UNITED STATES
DEPARTMENT OF THE INTERIOR
BUREAU OF LAND MANAGEMENT
HOBBBS, NEW MEXICO 88240

APPLICATION FOR PERMIT TO DRILL, DEEPEN, OR PLUG BACK

1a. TYPE OF WORK

DRILL ☒

DEEPEN ☐

PLUG BACK ☐

b. TYPE OF WELL

OIL WELL ☒

GAS WELL ☐

OTHER

SINGLE ZONE ☐

MULTIPLE ZONE ☐

2. NAME OF OPERATOR

Beach Exploration, Inc.

3. ADDRESS OF OPERATOR

800 N. Marienfeld Ste. 200 Midland, Texas 79701

4. LOCATION OF WELL (Report location clearly and in accordance with any State requirements.)*

At surface

2130' FSL & 660' FWL

(Unit L)

(NW/4 SE/4)

At proposed prod. zone

14. DISTANCE IN MILES AND DIRECTION FROM NEAREST TOWN OR POST OFFICE*

5 Miles Northwest of Crossroads

15. DISTANCE FROM PROPOSED*

LOCATION TO NEAREST
PROPERTY OR LEASE LINE, FT.
(Also to nearest drlg. unit line, if any)

660'

16. NO. OF ACRES IN LEASE

320

17. NO. OF ACRES ASSIGNED
TO THIS WELL

320 160 (SJS)

18. DISTANCE FROM PROPOSED LOCATION*
TO NEAREST WELL, DRILLING, COMPLETED,
OR APPLIED FOR, ON THIS LEASE, FT.

NA

19. PROPOSED DEPTH

10,000'

20. ROTARY OR CABLE TOOLS

Rotary

21. ELEVATIONS (Show whether DF, RT, GR, etc.)

4203'

22. APPROX. DATE WORK WILL START*

March 1, 1993

23. PROPOSED CASING AND CEMENTING PROGRAM

SIZE OF HOLE	SIZE OF CASING	WEIGHT PER FOOT	SETTING DEPTH	QUANTITY OF CEMENT
17 1/2"	13 3/8"	54.5#	375'	375 Sacks CIRCULATE
12 1/4"	8 5/8"	32.0#	4100'	400 Sacks (tie back above salt)
7 7/8"	4 1/2"	11.6#	10000'	300 Sacks (tie back above Wolfcamp)

APPROVAL SUBJECT TO
GENERAL REQUIREMENTS AND
SPECIAL STIPULATIONS
ATTACHED

IN ABOVE SPACE DESCRIBE PROPOSED PROGRAM: If proposal is to deepen or plug back, give data on present productive zone and proposed new productive zone. If proposal is to drill or deepen directionally, give pertinent data on subsurface locations and measured and true vertical depths. Give blowout preventer program, if any.

24.

SIGNED

Richard L. Nichols

TITLE Production

DATE January 13, 1993

(This space for Federal or State office use)

PERMIT NO.

APPROVAL DATE

Orig. Signed by Richard L. Nichols

AREA MANAGER
GALLAGHER RESOURCE AREA

APPROVED BY

TITLE

DATE

3-16-93

CONDITIONS OF APPROVAL, IF ANY:

*See Instructions On Reverse Side

OIL CONSERVATION DIVISION

DISTRICT I
P.O. Box 1980, Hobbs, NM 88240

P.O. Box 2088
Santa Fe, New Mexico 87504-2088

DISTRICT II
P.O. Drawer DD, Artesia, NM 88210

DISTRICT III
1000 Rio Brazos Rd., Artec, NM 87410

WELL LOCATION AND ACREAGE DEDICATION PLAT

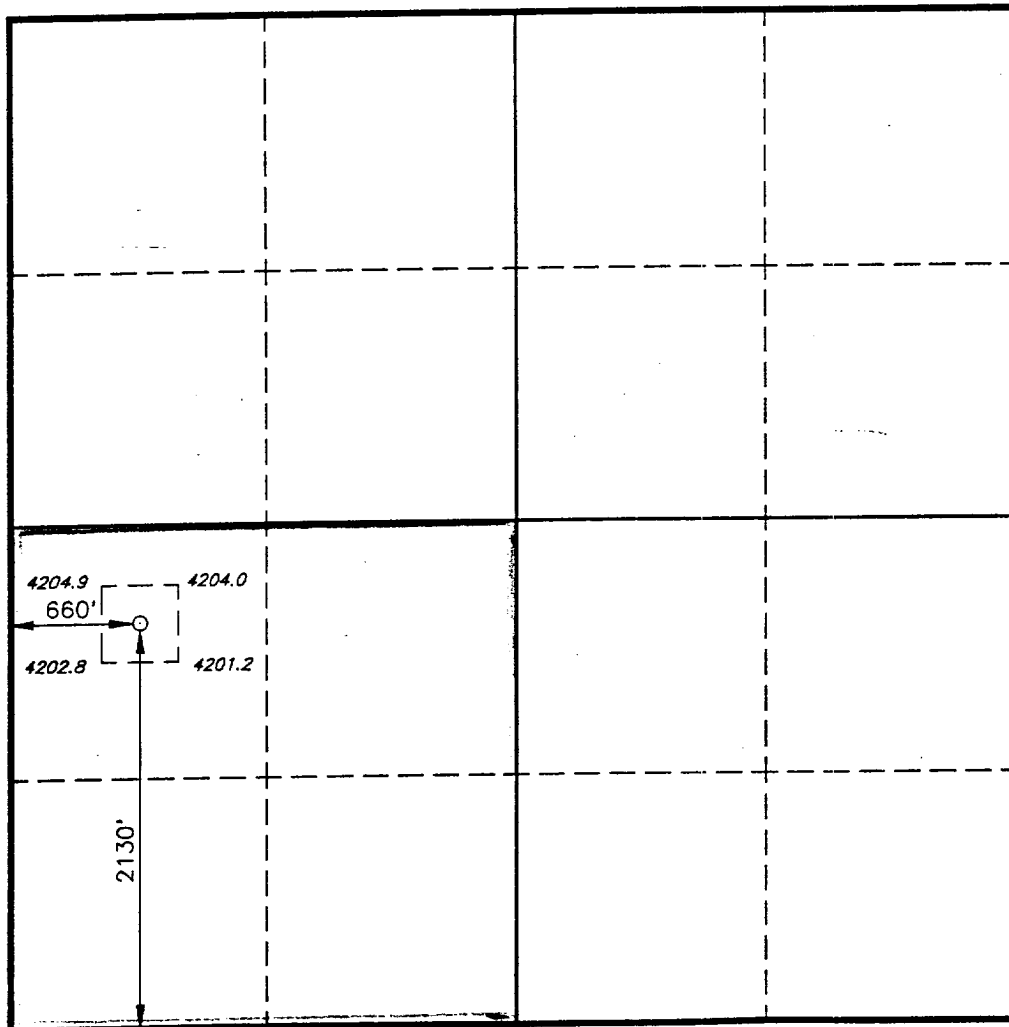
All Distances must be from the outer boundaries of the section

Operator BEACH EXPLORATION INC.			Lease BONDS FEDERAL		Well No. 2
Unit Letter L	Section 5	Township 9 SOUTH	Range 35 EAST	County NMPM	LEA
Actual Footage Location of Well: 2130 feet from the SOUTH line and 660 feet from the WEST line					
Ground Level Elev. 4203.0'	Producing Formation Vada	Pool Penn		Dedicated Acreage: 320 160 Acres	

1. Outline the acreage dedicated to the subject well by colored pencil or hachure marks on the plat below.
2. If more than one lease is dedicated to the well, outline each and identify the ownership thereof (both as to working interest and royalty).
3. If more than one lease of different ownership is dedicated to the well, have the interest of all owners been consolidated by communitization, unitization, force-pooling, etc.?
☐ Yes ☐ No If answer is "yes" type of consolidation _____

If answer is "no" list of owners and tract descriptions which have actually been consolidated. (Use reverse side of this form necessary.)

No allowable will be assigned to the well unit all interests have been consolidated (by communitization, unitization, forced-pooling, otherwise) or until a non-standard unit, eliminating such interest, has been approved by the Division.



OPERATOR CERTIFICATION

I hereby certify that the information contained herein is true and complete to the best of my knowledge and belief.

Signature
Hal Gill
Printed Name
Engineer
Position
Beach Exploration, Inc.
Company
January 13, 1993
Date

SURVEYOR CERTIFICATION

I hereby certify that the well location shown on this plat was plotted from field notes of actual surveys made by me or under my supervision, and that the same is true and correct to the best of my knowledge and belief.

Date Surveyed
NOVEMBER 19, 1992
Signature & Seal of
Professional Surveyor

GARY L. JONES
NEW MEXICO
REGISTERED PROFESSIONAL SURVEYOR
Certificate No. JOHN W. WEST, 678
RONALD E. JOHNSON, 3239
GARY L. JONES, 7977
92-11-1803

BEACH EXPLORATION, INC.
WELL #2 BONDS FEDERAL
2130' FSL & 660' FWL
SEC. 5, T9S, R35E
LEA COUNTY, NEW MEXICO

1. Surface Formation: Sandy soils of Quaternary Age.

2. Estimated Tops of Geologic Markers:

Rustler	2212'	Tubb	6930'
Yates	2764'	Abo	7748'
San Andres	4128'	Wolfcamp	9036'
Glorieta	5484'	Bough C	9812'

3. Anticipated Porosity Zones:

Water: Above 150'
Oil: Bough C

4. Casing Design:

Size	Interval	Weight	Grade	Joints
13 3/8"	0' - 375'	54.5#	J-55	ST&C
8 5/8"	0 - 375' - 4100'	32.0#	J-55	ST&C
4 1/2"	0-4100'-10000'	11.6#	N-80	ST&C

5. Pressure Control Equipment: Double Ram-Type Preventer & Hydril
(ALL 3M)

6. Circulating Medium: (See Attached)

0' - 375' Fresh water mud with gel or lime as
needed for viscosity control.
375' - 4100' Brine Water
4100' - 10000' Mud up to TD

7. Auxiliary Equipment: Drill string safety valve.

8. Testing, logging and coring program: No coring or DST's
are planned. Electric logs will include a Dual Laterolog
and a Neutron-Density log.

9. Abnormal pressure, temperatures or gases: None anticipated

10. Anticipated Starting Date: Approximately March 1, 1993

BLOWOUT PREVENTER ARRANGEMENT

Beach Exploration, Inc.
Bonds Federal Well #2
NW/4 SE/4 Sec. 5, T9S, R35E
Lea County, New Mexico

