

OIL CONSERVATION DIVISION

P.O. Box 2088

Santa Fe, New Mexico 87504-2088

DISTRICT I

P.O. Box 1980, Hobbs, NM 88240

DISTRICT II

P.O. Drawer DD, Artesia, NM 88210

DISTRICT III

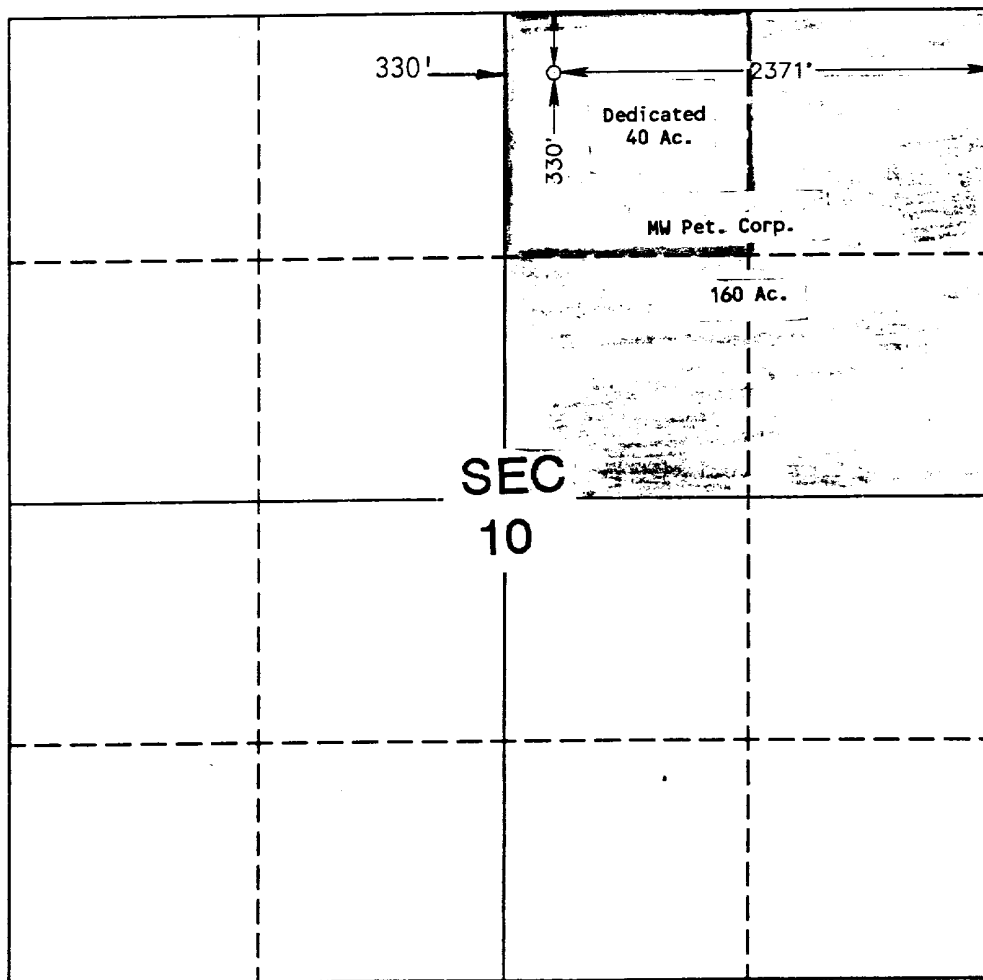
1000 Rio Brazos Rd., Artec, NM 87410

WELL LOCATION AND ACREAGE DEDICATION PLAT

All Distances must be from the outer boundaries of the section

Operator M.W. PETROLEUM CORPORATION			Lease STATE 10		Well No. 1
Unit Letter B	Section 10	Township 9 SOUTH	Range 32 EAST	County LEA	
Actual Footage Location of Well: 330 feet from the NORTH line and 2371 feet from the EAST line					
Ground Level Elev. 4441.5'	Producing Formation Devonian	Pool Wildcat		Dedicated Acreage: 40 Acres	

1. Outline the acreage dedicated to the subject well by colored pencil or hatchure marks on the plat below.
 2. If more than one lease is dedicated to the well, outline each and identify the ownership thereof (both as to working interest and royalty).
 3. If more than one lease of different ownership is dedicated to the well, have the interest of all owners been consolidated by communitization, unitization, force-pooling, etc.?
☐ Yes ☐ No If answer is "yes" type of consolidation _____
- If answer is "no" list of owners and tract descriptions which have actually been consolidated. (Use reverse side of this form necessary.) _____
- No allowable will be assigned to the well unit all interests have been consolidated (by communitization, unitization, forced-pooling, otherwise) or until a non-standard unit, eliminating such interest, has been approved by the Division.



OPERATOR CERTIFICATION

I hereby certify the the information contained herein is true and complete to the best of my knowledge and belief.

C.J. Pavlich
Signature

Printed Name
C.J. Pavlich

Position
Drilling Manager

Company
MW Petroleum Corp.

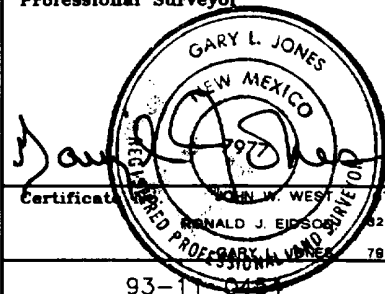
Date
3/13/93

SURVEYOR CERTIFICATION

I hereby certify that the well location shown on this plat was plotted from field notes of actual surveys made by me or under my supervision, and that the same is true and correct to the best of my knowledge and belief.

Date Surveyed
MARCH 23, 1993

Signature & Seal of
Professional Surveyor



Certified by **RONALD J. EIDSON** 7977

93-11-0484

Oxford[®]

✱ ESSELTE

MADE IN U.S.A.

NO. R753 **1/3**

• • • •

I-822A

12-1-95

I-822

10-25-94

APR 15 1993

OCT 23 1996

RECOMPLETION OCT 28 1996

OCT 28 1996

APR 28 1999

#1 M W Petroleum Corp.
Button Up Unit
FORM: State 10 #1
10-9-32
UNIT B

PA

11/1

000

OPER. OGRID NO. 15422
PROPERTY NO. 15442
POOL CODE 96192
EFF. DATE 12-1-94
API NO. 30-025-31948

OIL POD 1958710 GAS POD 1958730
TRANSPORTER 138648 TRANSPORTER _____
TRANSPORTER _____ TRANSPORTER _____
WATER POD 1958750